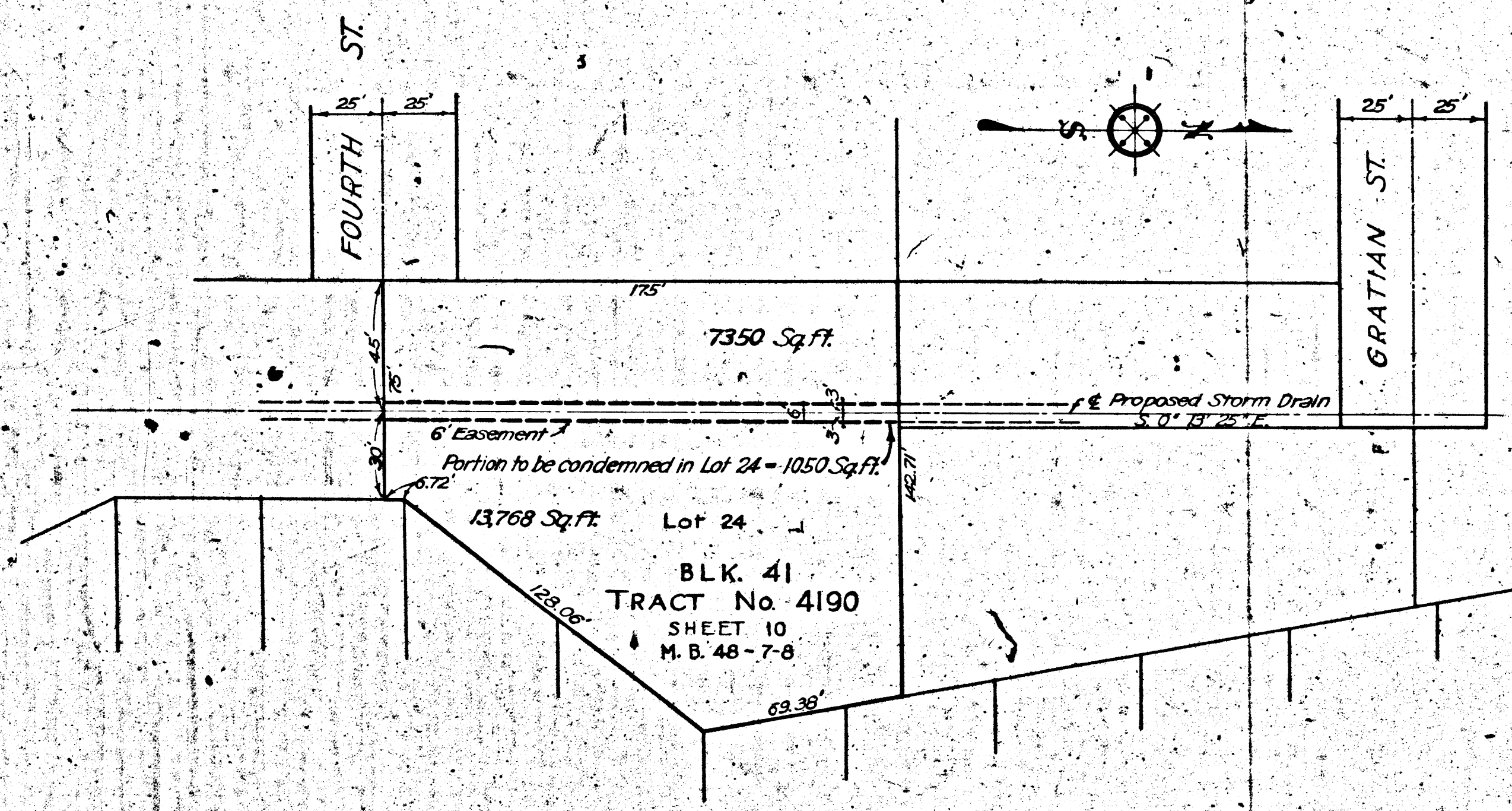


(9) **MAP SHOWING
 LAND TO BE CONDEMNED
 FOR
 DRAINAGE DISTRICT IMPROVEMENT No. 22.**
 Scale 1"=40' June 6, 1928.

Superior Court Case No. 257016
 Suit for Condemnation
 Filed July 17th 1928
 County of Los Angeles, Pltff.
 Vs
 Merton Russell et al., Def.
 Case dismissed Jan. 23rd 1929.



LEGEND
 LAND TO BE CONDEMNED
 SHOWN COLORED RED

