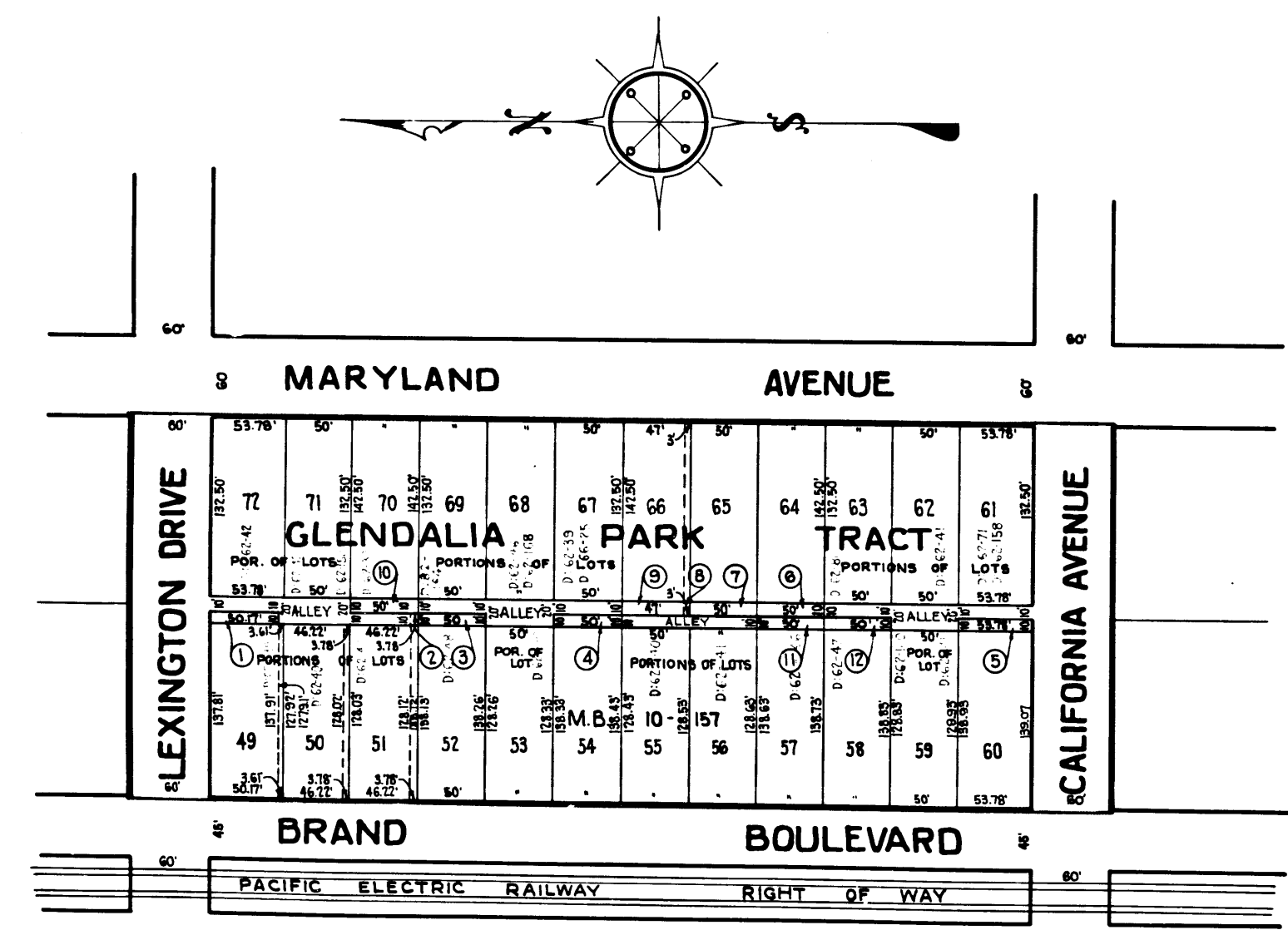


Superior Court Case No. 259353  
 Suit for Condemnation  
 Filed Aug. 18, 1928  
 City of Glendale, Pltff.  
 Vs.  
 Moses Mayers et al. Def.

*Interlocutory judgment as per  
 map, rendered Feb. 3<sup>rd</sup> 1930.  
 Judg. Bk. 731-246.  
 Final judgment in favor of Pltff,  
 as per map, rendered Dec. 3, 1930  
 D:82-83 O.R. 10470-258*



**MAP N° 1144**  
 SHOWING LAND TO BE CONDEMNED F' R THE LAYING OUT  
 AND OPENING OF AN  
**ALLEY**  
 BETWEEN BRAND BOULEVARD AND MARYLAND AVENUE  
 FROM CALIFORNIA AVENUE TO LEXINGTON DRIVE  
 ALSO THE DISTRICT TO BE ASSESSED TO PAY THE COSTS  
 AND EXPENSES OF SAID IMPROVEMENTS - IN THE CITY OF

**GLENDALIA, CALIFORNIA**  
 SCALE 1"=100' AUGUST 1928  
*Sh. 41*

EXHIBIT "C"

- LEGEND**
- Shows Land to be condemned.
  - Shows Boundary Line of District to be assessed.
  - Ⓢ Shows Parcel Numbers in Complaint.

C. F. 1587 -