

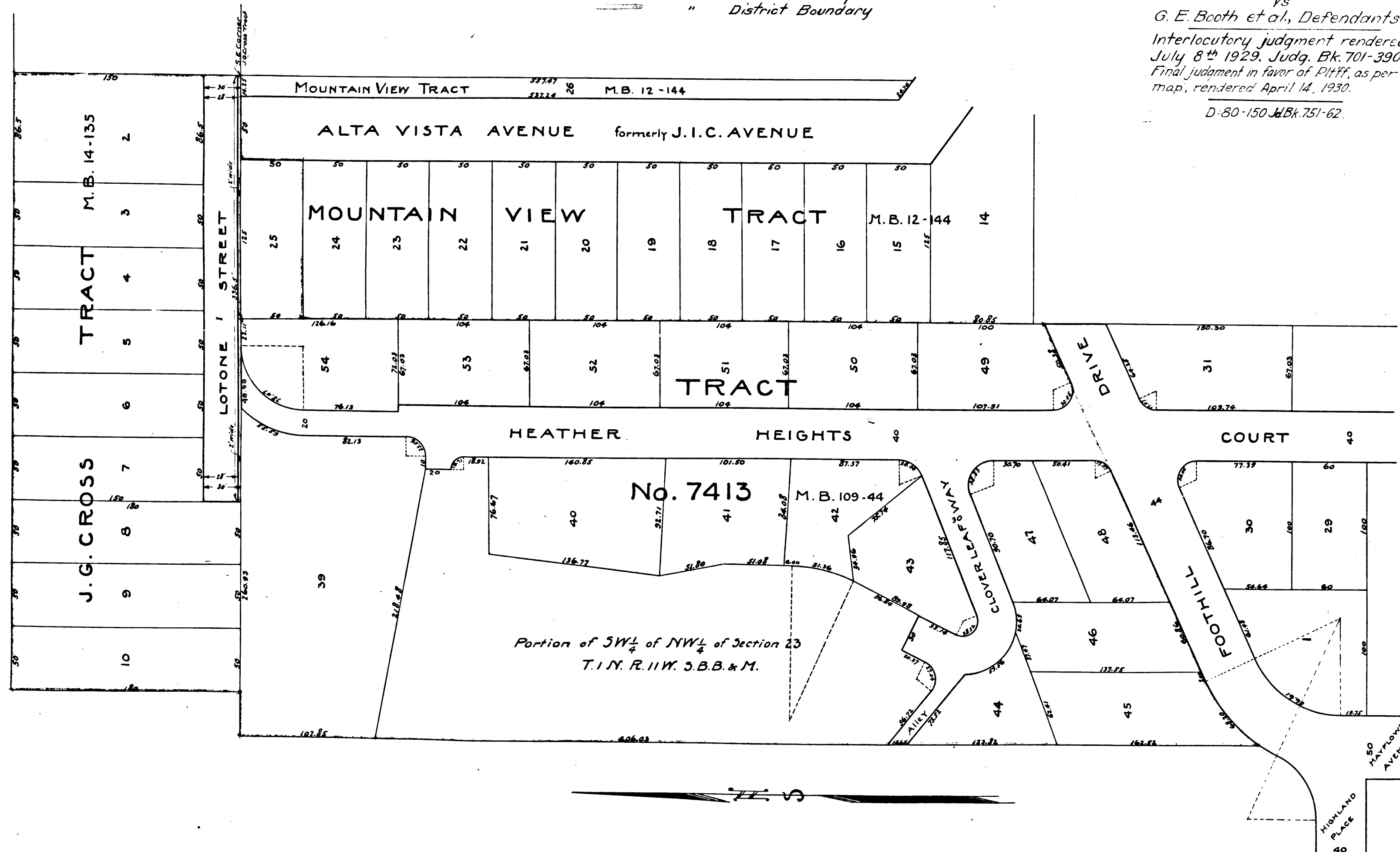
EXHIBIT C  
MAP

Indicating by Boundary Lines the land required and the Territory to be included in an ASSESSMENT DISTRICT to pay the Cost and Expenses of the OPENING and WIDENING of LOTONE STREET in the CITY of MONROVIA, California.

27-45  
A-67

Sht. 45  
Superior Court Case No. 251422  
Suit for Condemnation  
Filed May 3<sup>rd</sup> 1928  
City of Monrovia, Plaintiff  
Vs  
G. E. Booth et al, Defendants.  
Interlocutory judgment rendered  
July 8<sup>th</sup> 1929, Judg. Bk. 701-390.  
Final judgment in favor of Pltff, as per  
map, rendered April 14, 1930.  
D:80-150 J.Bk. 751-62.

Legend  
— Shows Land to be acquired  
--- " District Boundary



C.F. 1588 -

CITY OF MONROVIA  
OFFICE OF CITY ENGINEER  
Assessment District O. & W.  
LOTONE Street  
APPROVED: *K.H.F. J.L.* DATE: Dec. 1927  
Scale: 1" = 50'  
BY: W.T. C.H.T. G.H.D.  
DRAWN BY: C.500