



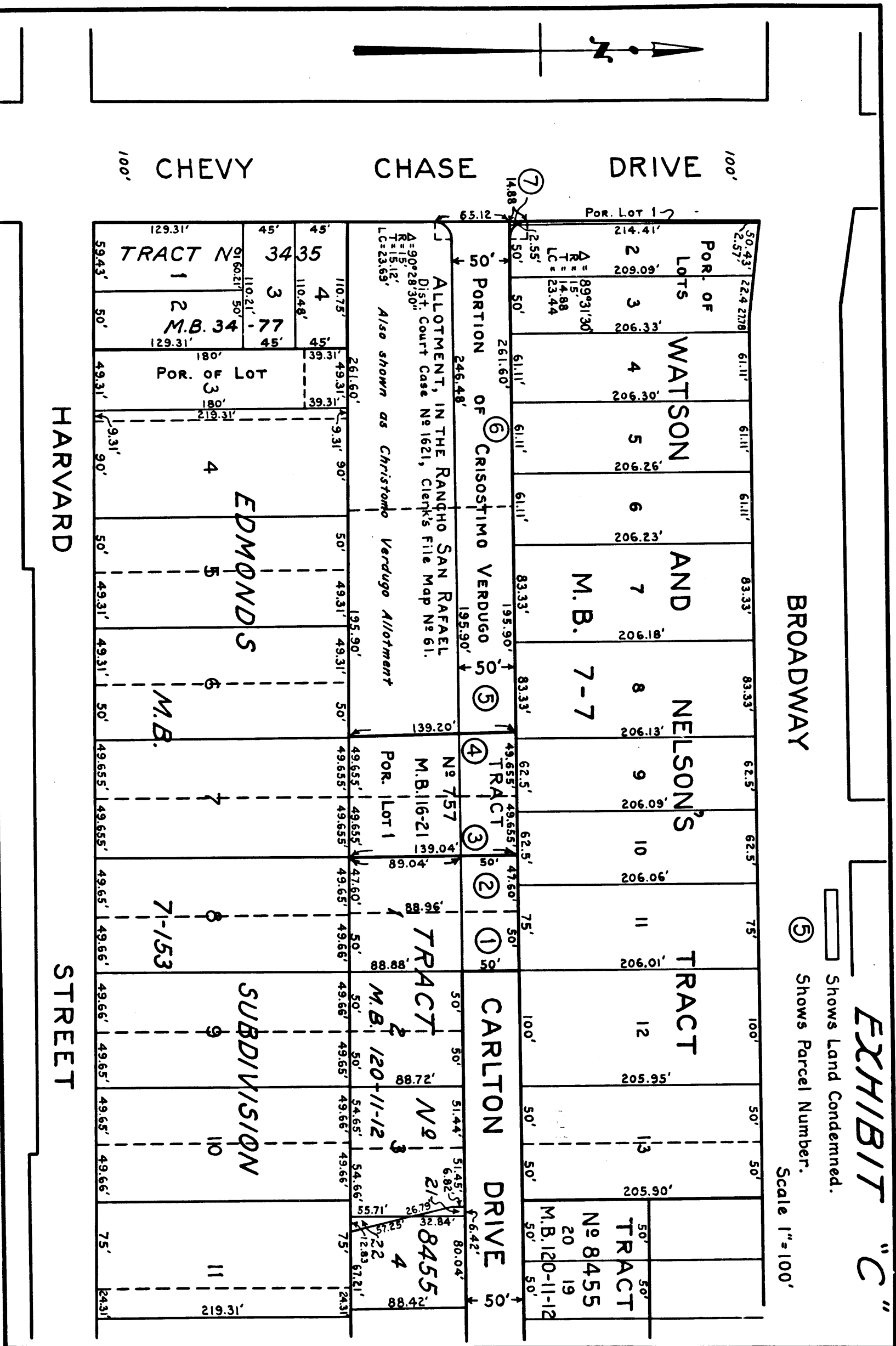
C.F. 1591 -

EXHIBIT "C"

Shows Land Condemned.

Shows Parcel Number.

Scale 1"=100'



Sheet 41
A-736

Superior Court Case No. 259897
 Suit for Condemnation
 Filed Aug. 27th 1928
 City of Glendale, Plaintiff
vs
 Elwood M. Ingledue et al, Def.
 Interlocutory judgment as per map,
 rendered Jan. 24th 1930. Judg.
 Bk. 744-249.
 Final judgment in favor of Pltff, as
 per map, rendered Sept. 3, 1930
 D: 82-15 O.R. 10221-143

