

C.F. 1595-

NOTE: SHADED PORTIONS SHOW LAND TO BE CONDEMNED.

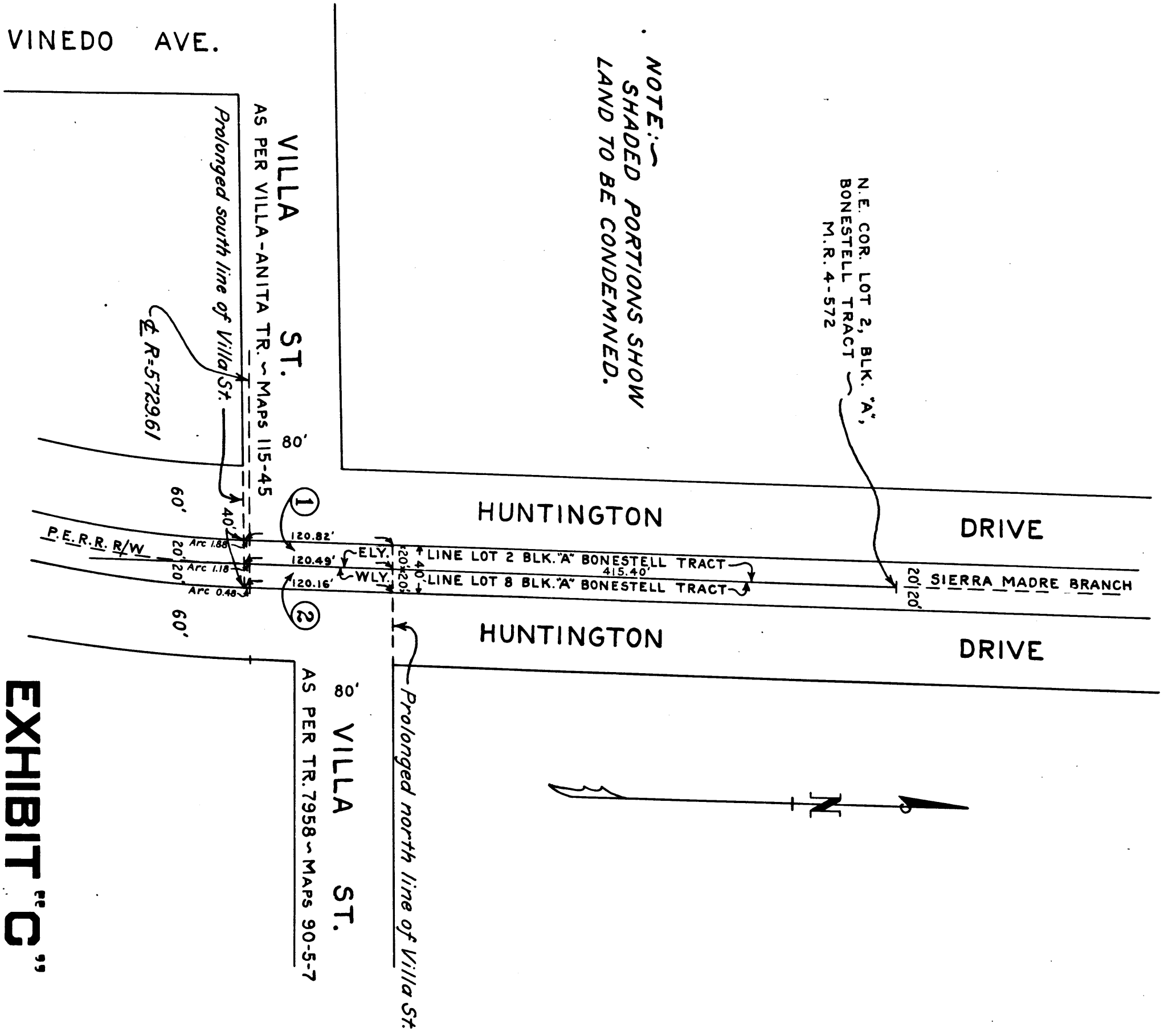


EXHIBIT "C"

DRAWN BY <i>M.E.A./B.S.F.</i> CHECKED BY <i>M.A.M.D.</i> FIELD BOOK BY <i>M.A.M.D.</i> DESIGNED BY <i>M.A.M.D.</i> APPROVED <i>M.C. GAVIN</i> CITY ENGINEER CITY ENGINEER CITY ENGINEER CITY ENGINEER CITY ENGINEER	CITY OF PASADENA OFFICE OF CITY ENGINEER & SUPERINTENDENT OF STREETS OPENING AND EXTENDING OF VILLA STREET ACROSS THE PACIFIC ELECTRIC TRACKS	DATE: SEPT., 1928. SCALE: 1" = 100' DRAWING NUMBER G-705
--	---	--

Superior Court Case No. 261853
 Suit for Condemnation
 Filed Sept. 21st 1928
 City of Pasadena, Pettr.
 Vs.
 Louis H. Bonestell et al., Def.
 Final Judgment in favor of Pettr. as
 per map, rendered August 8, 1929.
 D:77-222 Jdg. Bk. 732-362

Sh. 44