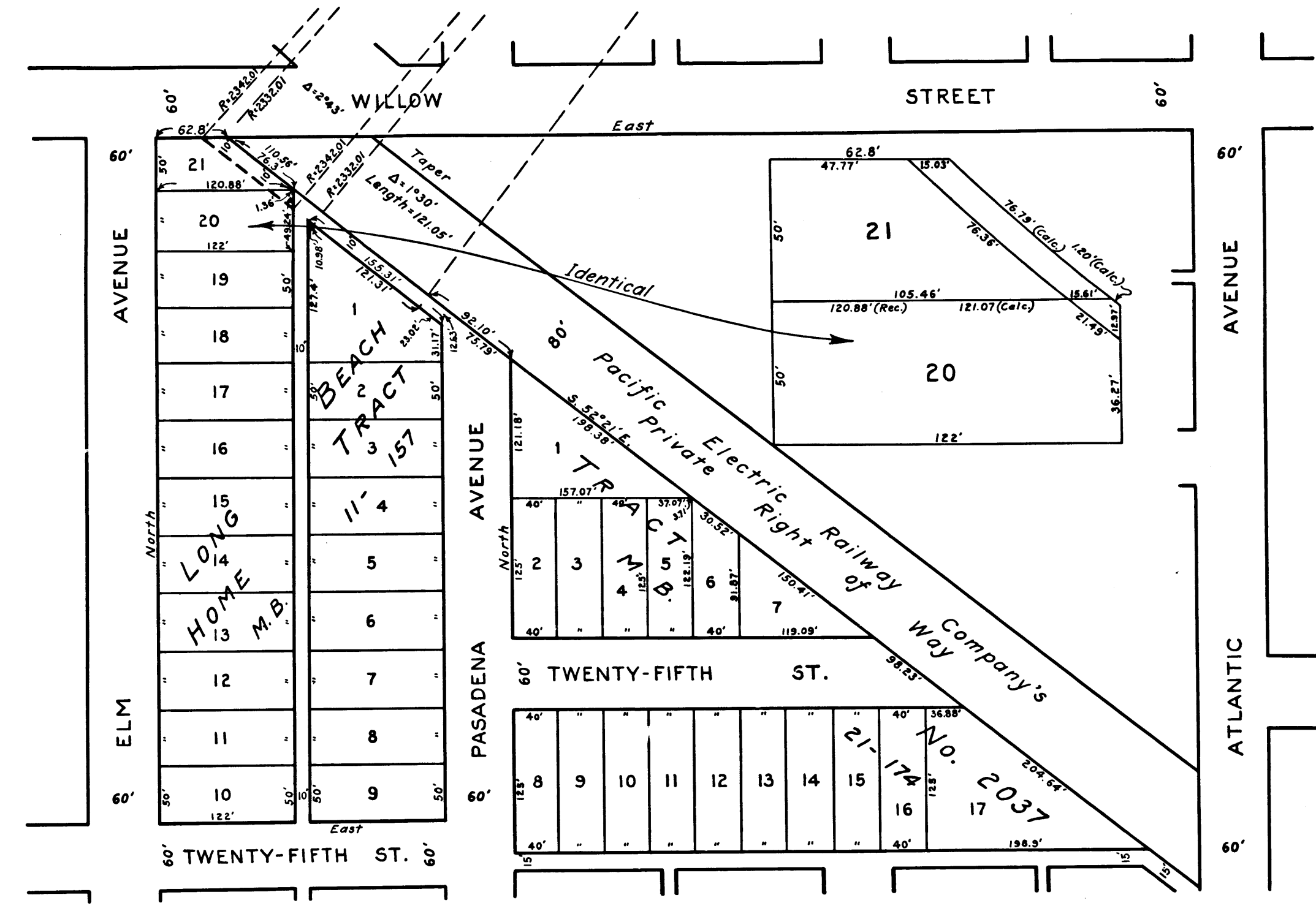
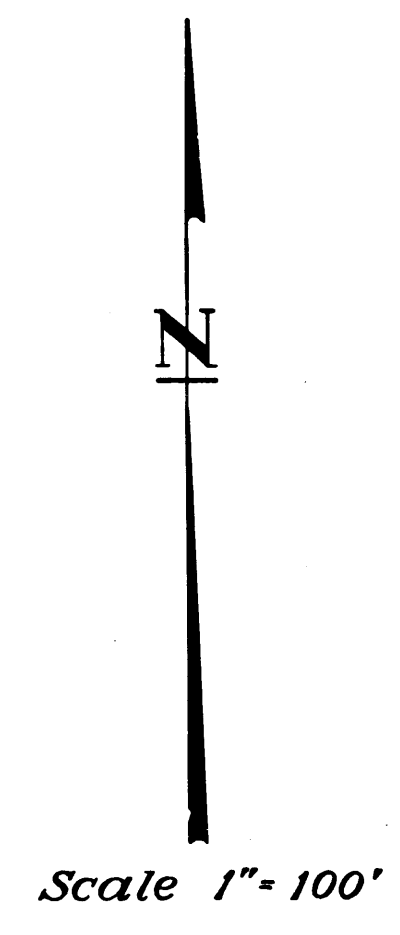
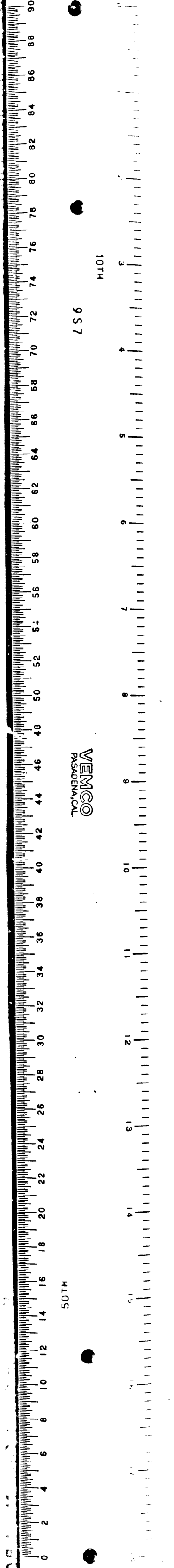
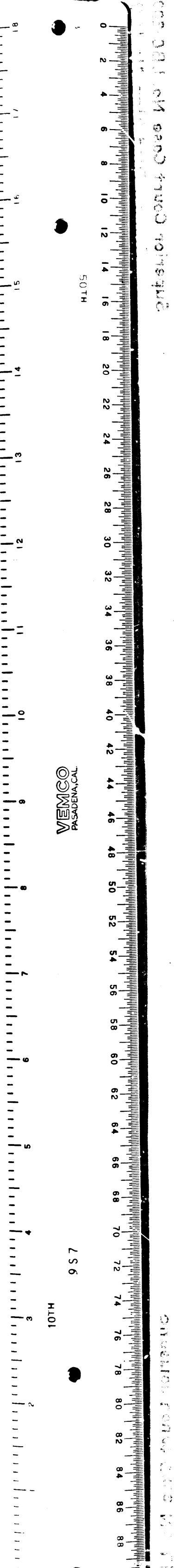


Sh-30
A-157

City's Filed Map No 150



Indicates Land to be Condemned.

EXHIBIT "C"

Sheet 30
Superior Court Case No. LBC-2003
Suit for Condemnation
Filed Sept. 4, 1928
City of Long Beach, Plaintiff ~
vs.
Horace W. White, et al., Defendants
*Interlocutory judgment as per map,
rendered Mar. 18, 1929. Jud. Bk. 703-375.
Final judgment in favor of Plt'ff,
as per map, rendered Jan. 20, 1930.*
D: 80-33 O.R. 9642-356.

C.F. 1605 -

City's Filed Map No 150