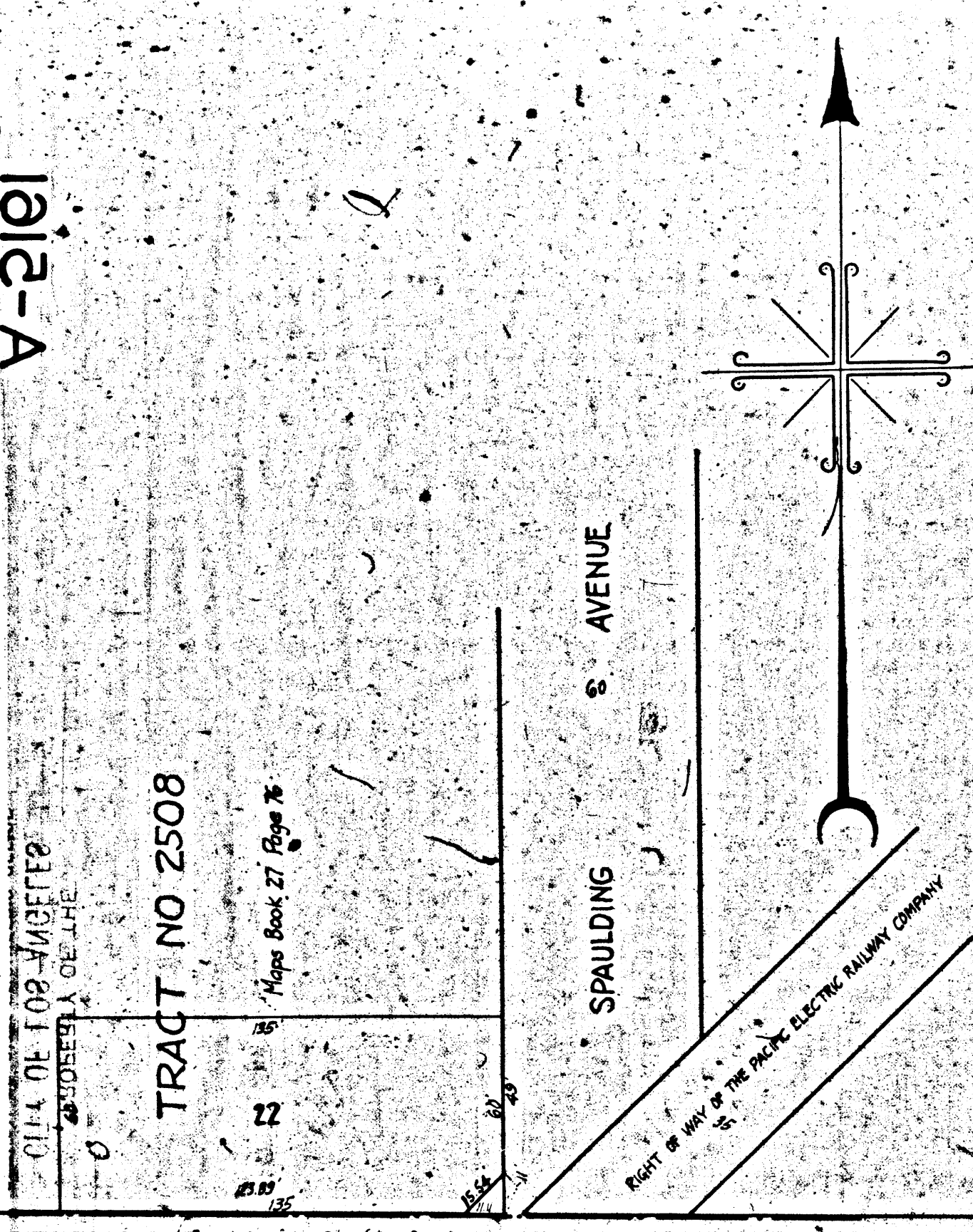


1012-A

1012-A



FOUNTAIN AVENUE AND SPAULDING AVENUE
FILE NO 14891-27 CHARGE NO 67111

MAP
 SHOWING THE LAND TO BE CONDEMNED FOR
 PUBLIC STREET PURPOSES
 AT THE INTERSECTION OF THE WESTERLY LINE OF
 SPAULDING AVENUE
 WITH THE NORTHERLY LINE OF
 FOUNTAIN AVENUE
 IN THE
 CITY OF LOS ANGELES, CAL.

IN ACCORDANCE WITH ORDINANCE NO 60584

JOHN C. SHAW CITY ENGINEER JUNE 1928

Scale 1 inch = 40 feet

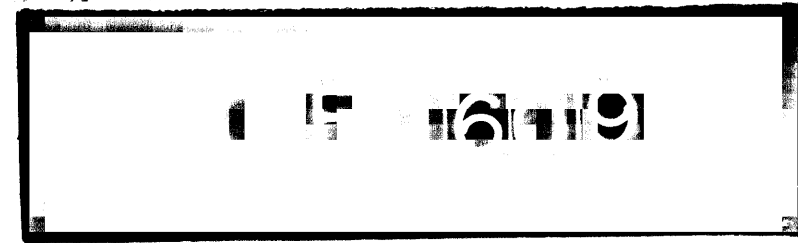
Note
Land to be condemned shown colored red.

Superior Court Case No. 262919
 Suit for Condemnation
 Filed Oct. 6th 1928
 City of Los Angeles, Plaintiff
 vs
 William W. Neice et al., Def.

Final judgment in favor of Pl'tff.
as per map, rendered June 29, 1929.

D:75-141, O.R. 9285-145
Shf. 40

A-5161



1012-A

1012-A

CITY OF LOS ANGELES
PROPERTY OF THE