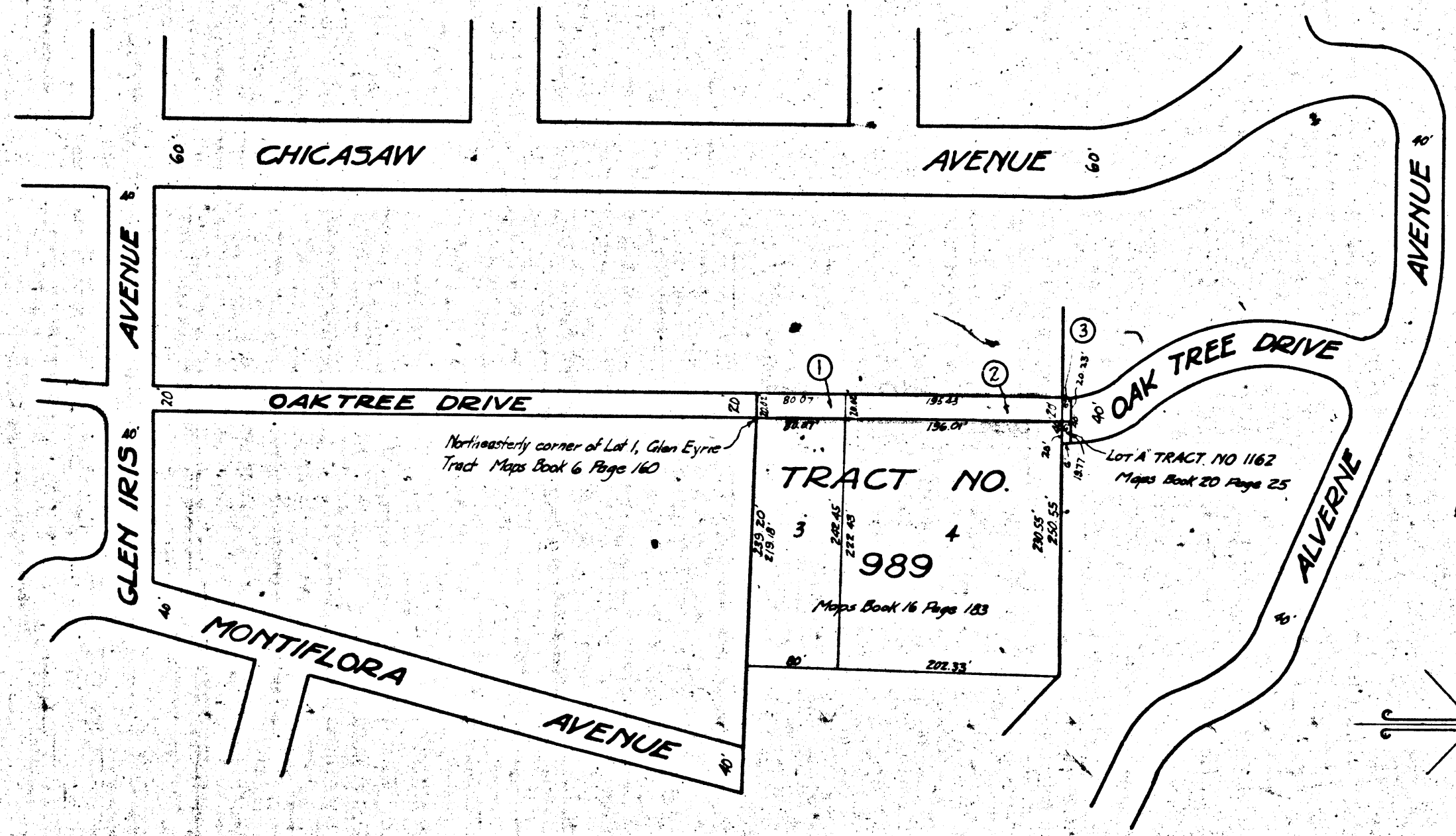


V-2182



MAP
 SHOWING THE LAND TO BE CONDEMNED
 FOR THE OPENING AND EXTENDING OF
OAK TREE DRIVE
 BETWEEN
 ALVERNE AVENUE
 AND
 GLEN IRIS AVENUE
 IN THE
 CITY OF LOS ANGELES, CAL.

IN ACCORDANCE WITH ORDINANCES NOS. 59295 AND 61027
 JOHN C. SHAW CITY ENGINEER JUNE 1928
 Scale 1" inch = 100' Feet

Notes
 Land to be condemned shown colored red.
 Figures in circles indicate the parcel numbers as set
 forth in paragraph VII of the complaint.
 Sheet 41

Superior Court Case No. 263277
 Suit for Condemnation
 Filed Oct. 11th 1928
 City of Los Angeles, Plaintiff
 Vs
 Ellen A. Robinson et al, Def.
 Interlocutory judgment as per
 map, rendered July 16, 1929.
 Judg. Bk. 734-23.
 Final judgment in favor of Pl'tff,
 as per map, rendered Aug. 6, 1930.

D:79-247, O.R. 10202-227.

A-5185

