

TRACT No 7003
M.B. 75-12

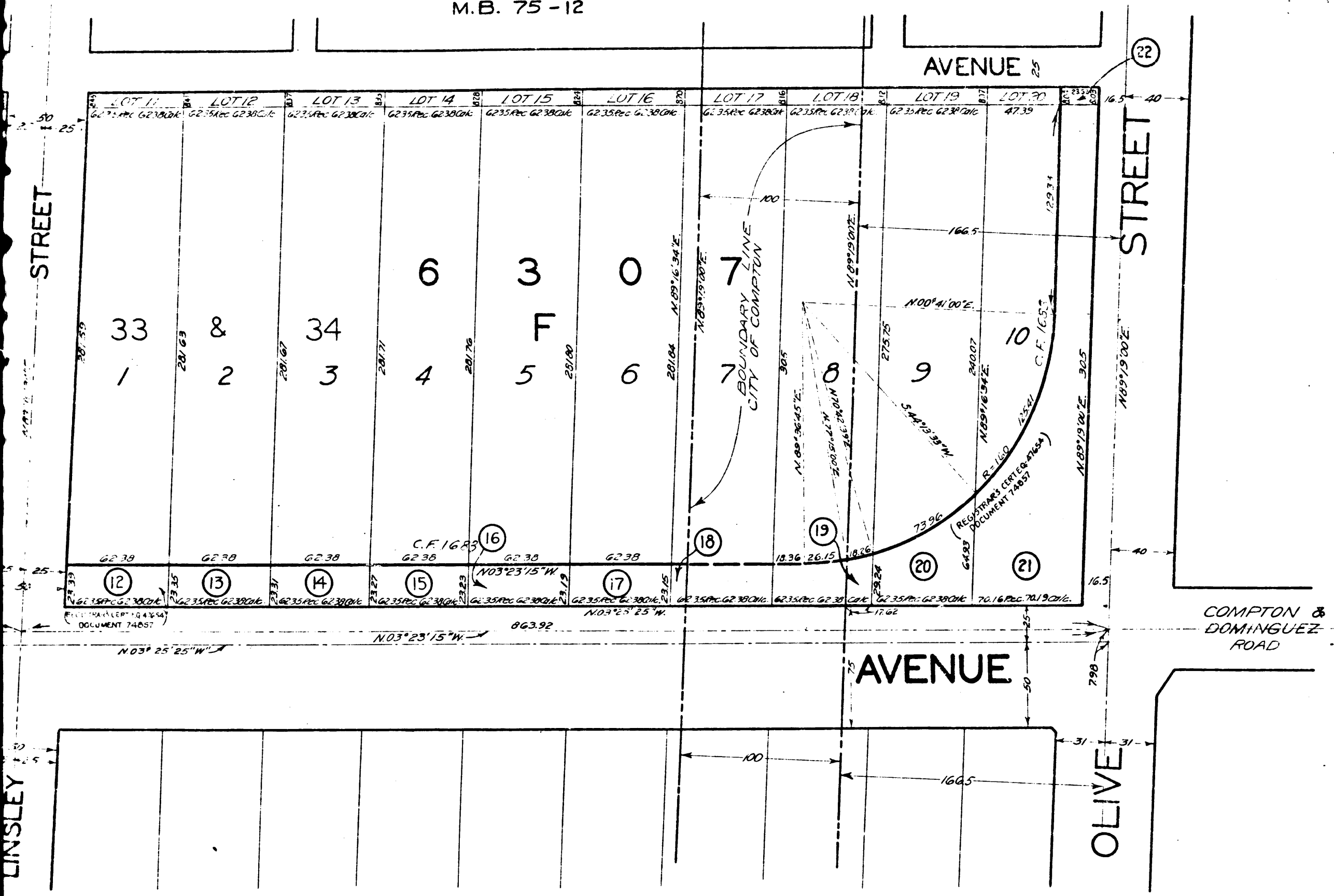


EXHIBIT "A"
MAP SHOWING PROPERTY TO BE ACQUIRED
FOR
THE WIDENING, IMPROVEMENT OF AND WORK UPON
ATLANTIC AVENUE
AND
OLIVE STREET

IN ACCORDANCE WITH A RESOLUTION OF THE BOARD OF SUPERVISORS
OF LOS ANGELES COUNTY ADOPTED AUG. 20, 1928.

SCALE: 1" = 50' AUG. 1928.

J. E. ROCKHOLD COUNTY SURVEYOR

LEGEND

Land sought to be acquired colored red.
Numbers in circles indicate parcels sought to be condemned.
The parcels are described in paragraph VII of the complaint.
Portion colored red shows location, general route, and
terminii of public road to be condemned.

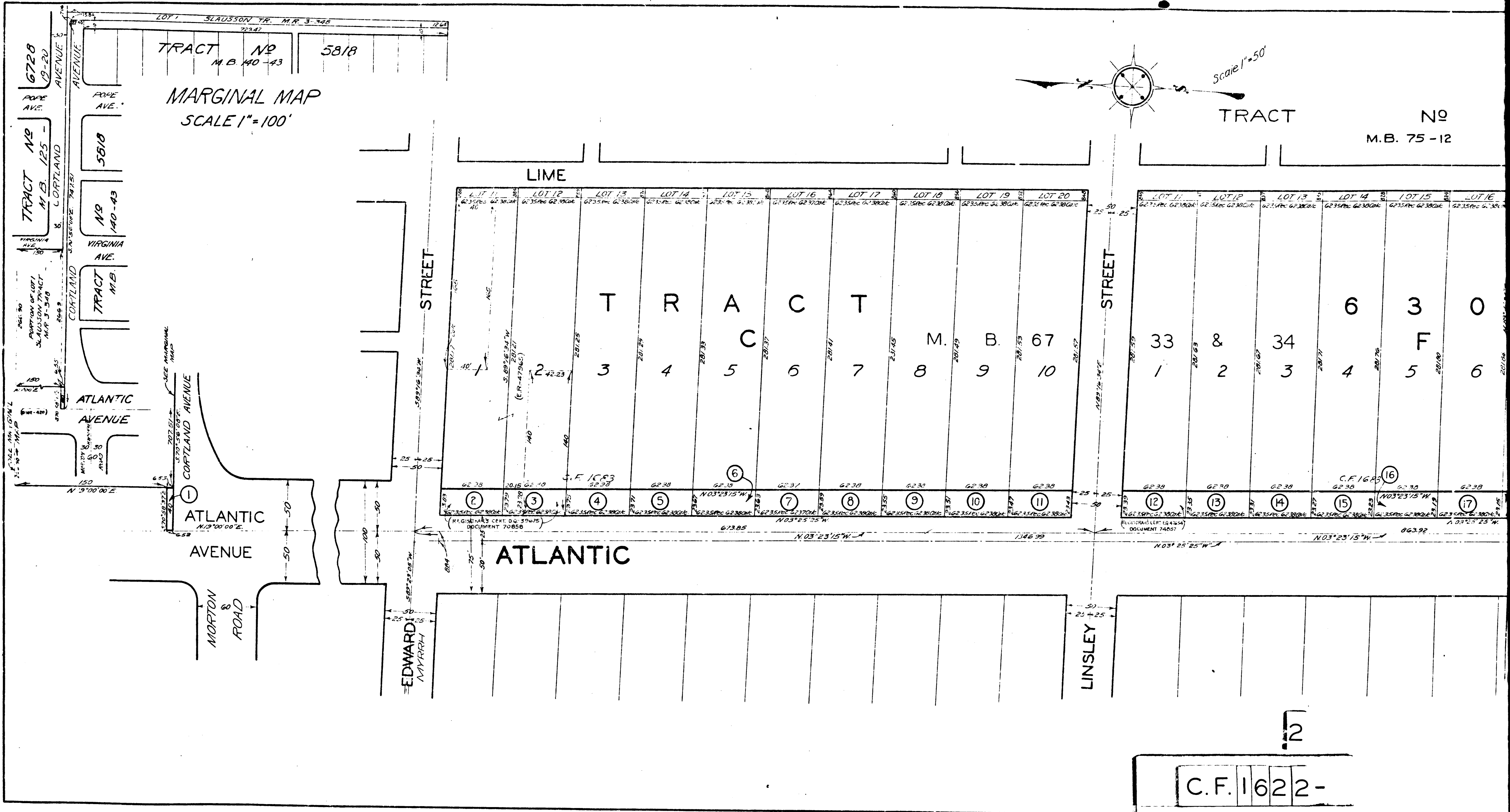
Sht. 32
Superior Court Case No. 264386
Suit for Condemnation
Filed Oct. 26th 1928
County of Los Angeles, Plff.
Vs
Margaret A. Bauer et al., Def.
Order for Immediate Possession Dec. 5, 1928
Case Dismissed March 13, 1943

C.F. 1622-

A & I DISTRICT NO. 1
Drawn by G.A. Shaw
Checked by G.A. Shaw
Approved by W. Grantford

957

MENCO



C.F. 1622-

12