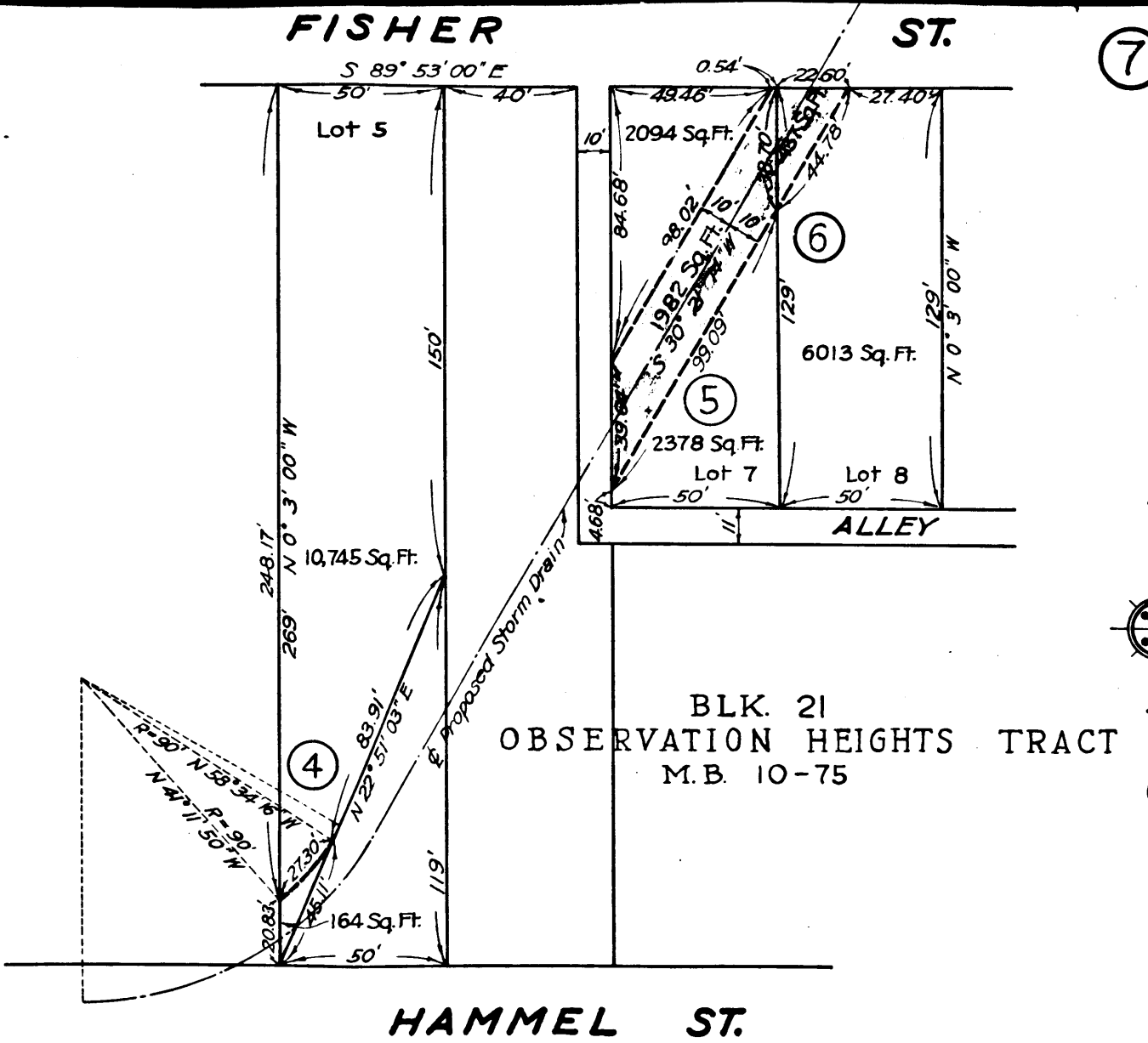
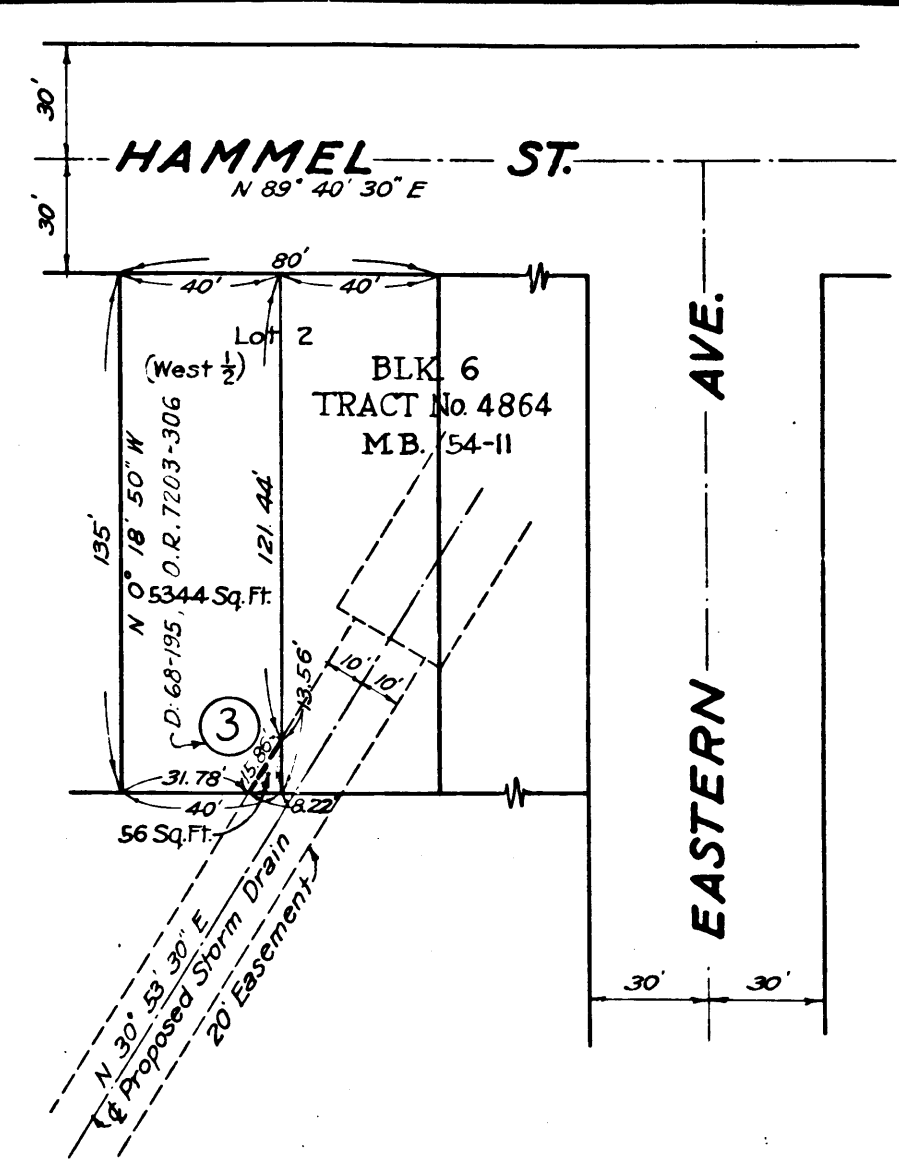
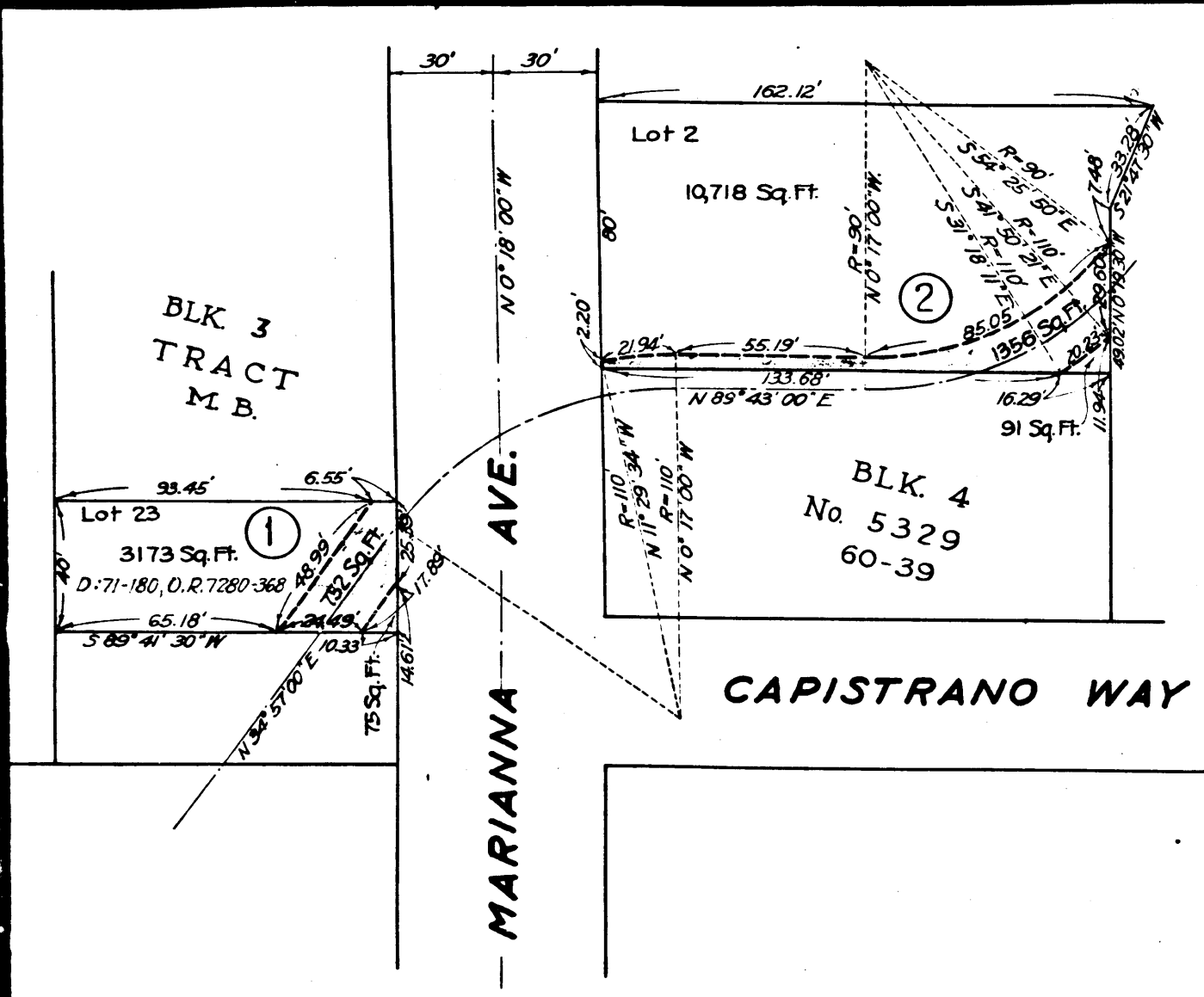


1074  
957

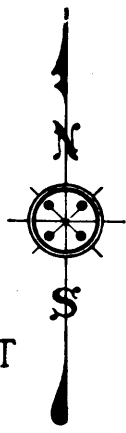
MEMCO  
MASONRY



⑦ **MAP SHOWING  
LAND TO BE CONDEMNED  
FOR  
D. D. I. No. 26.**  
Scale 1"=40' Sept. 5, 1928.

Superior Court Case No. 265627  
Suit for Condemnation  
Filed Nov. 14<sup>th</sup> 1928  
County of Los Angeles, Plff.  
Vs  
Francisca Morales de Zavala  
et al, Defendants.

Pending Pels 1 to 6 (as of 7-24-44)  
I.P. Deposit of 60<sup>th</sup> ordered but never made



See C.S.B-1192-2  
**LEGEND**  
LAND TO BE CONDEMNED  
SHOWN COLORED RED

C.F. 1634 -

957

MEMCO  
MASONRY

5074