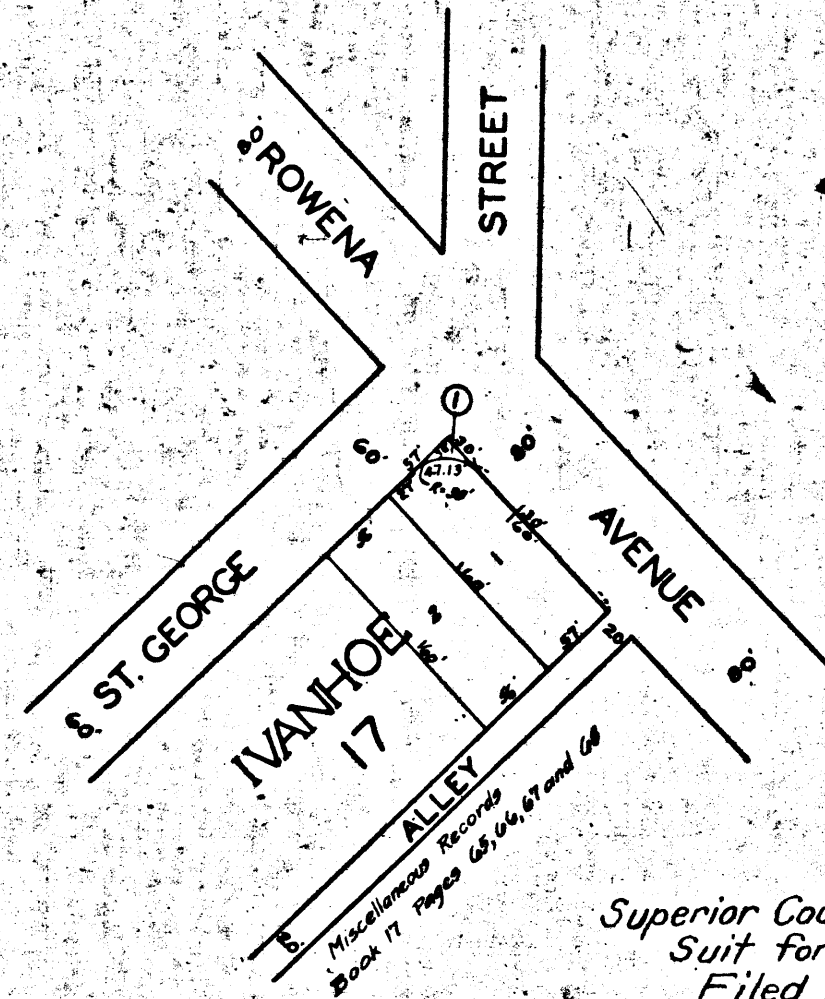
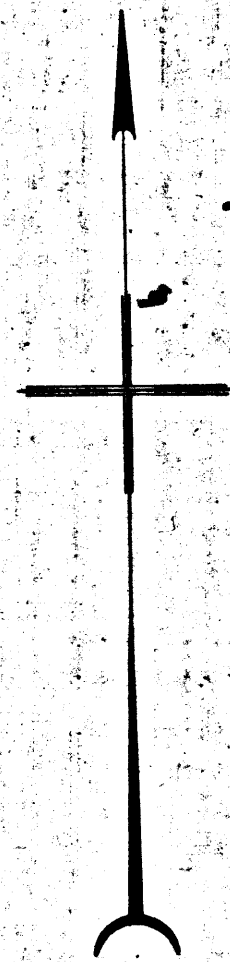
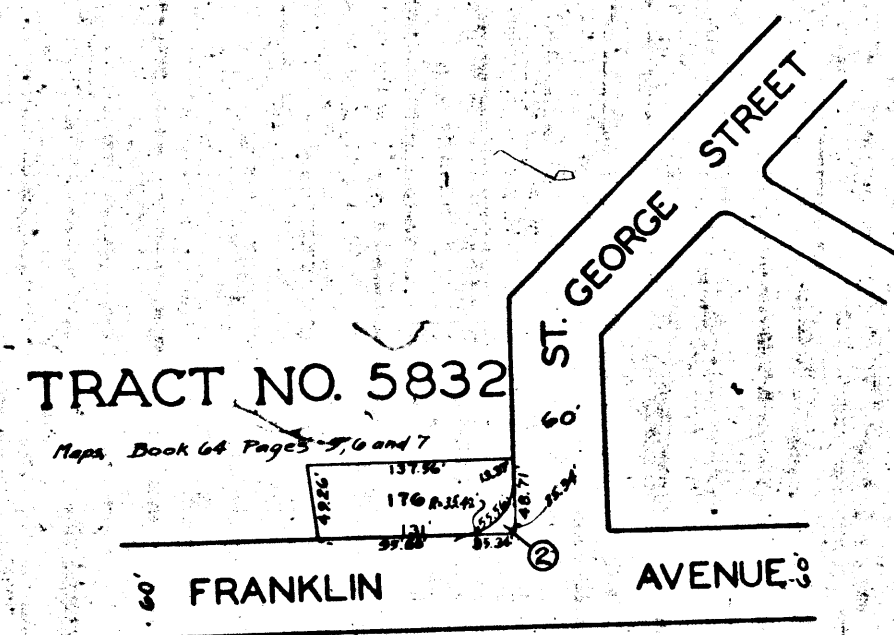


A-2334

CITY OF LOS ANGELES
ENGINEER OF THE

A-2334



Superior Court Case No. 265792
Suit for Condemnation
Filed Nov. 16th 1928
City of Los Angeles, Pltff.
Vs
Roy E. Zenke et al, Def.
Final judgment in favor of Pltff.
as per map, rendered May 24, 1929.
D: 75-71, Q.R. 8175-136.
Sht. 40

Land to be condemned shown colored red.
Figures in circles indicate the parcel numbers as set forth in
paragraph VII... of the complaint.

ROWENA AVENUE AND ST. GEORGE STREET O. & W. DISTRICT
FILE NO. 3594-27 CHARGE NO. 71664

A-2334

CITY OF LOS ANGELES
ENGINEER OF THE

A-2334

MAP
SHOWING THE LAND TO BE CONDEMNED
FOR
PUBLIC STREET PURPOSES
AT THE INTERSECTION OF THE
SOUTHEASTERLY LINE OF
ST. GEORGE STREET
WITH THE SOUTHWESTERLY LINE OF
ROWENA AVENUE
ALSO
AT THE NORTHWESTERLY CORNER OF
ST. GEORGE STREET
AND
FRANKLIN AVENUE
IN THE
CITY OF LOS ANGELES CALIFORNIA
IN ACCORDANCE WITH ORDINANCE NO. 61834
JOHN C. SHAW CITY ENGINEER OCTOBER 1928
SCALE 1 INCH=100 FEET

A-5334

