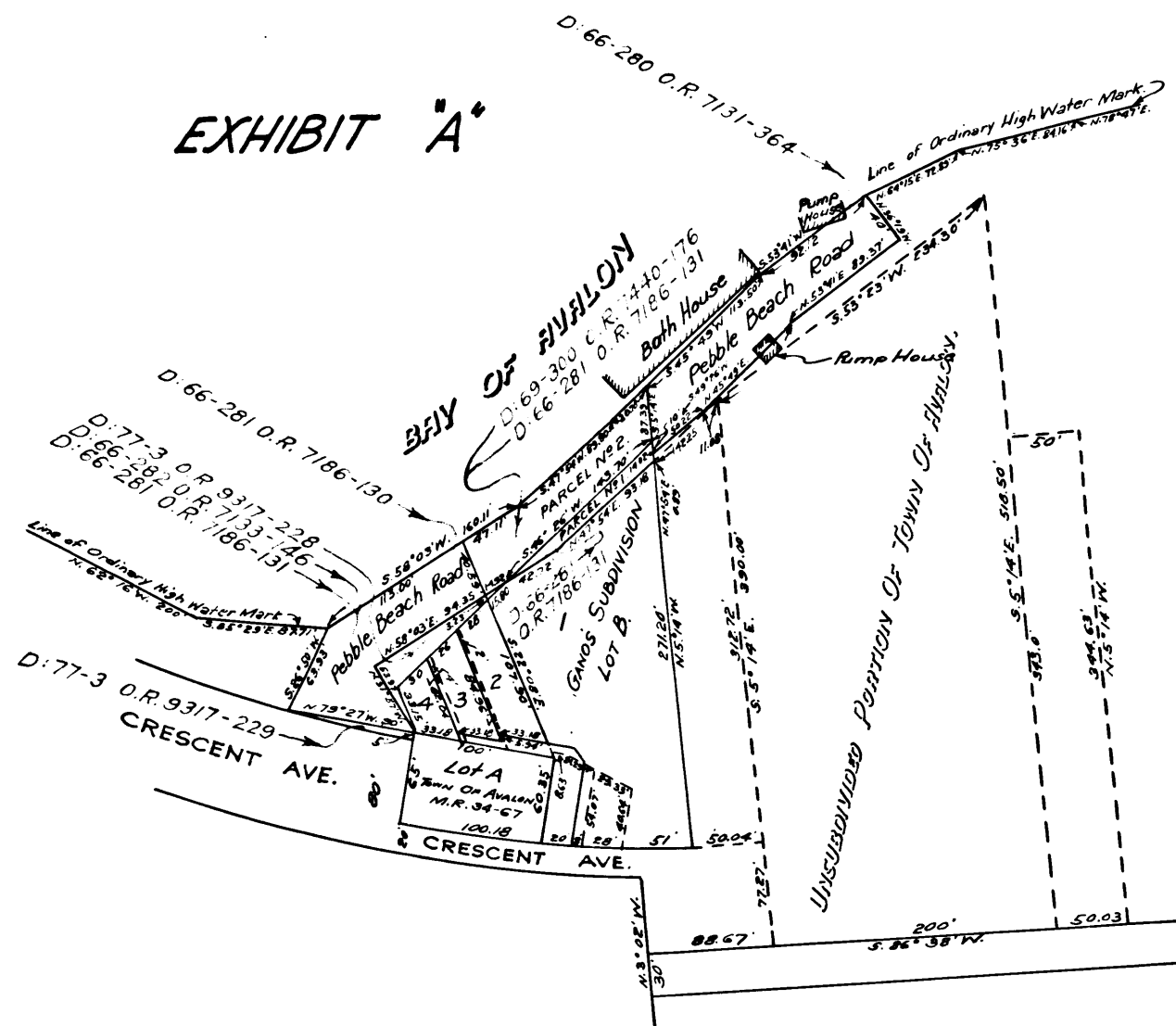


EXHIBIT 'A'



Map

SHOWING THE LOCATION, GENERAL ROUTE
AND TERMINI OF THE RIGHT OF WAY
SOUGHT TO BE CONDEMNED IN THE
ABOVE ENTITLED ACTION BY THE
City of Avalon, Calif.

Also all parcels of land to be condemned and all larger parcels of which they are a part.

NOTE

Land sought to be condemned shown colored in red.

A.B. WADDINGHAM - CITY ENGINEER

SCALE 1 inch = 100 feet

Sheet 19

Superior Court Case No 267208

Suit for Condemnation

Filed Dec. 7th, 1928.

City of Avalon, Plaintiff,

vs

J. R. Giddings, et al, Def

Case dismissed Feb. 21st 1929.

C.F. 1642-