

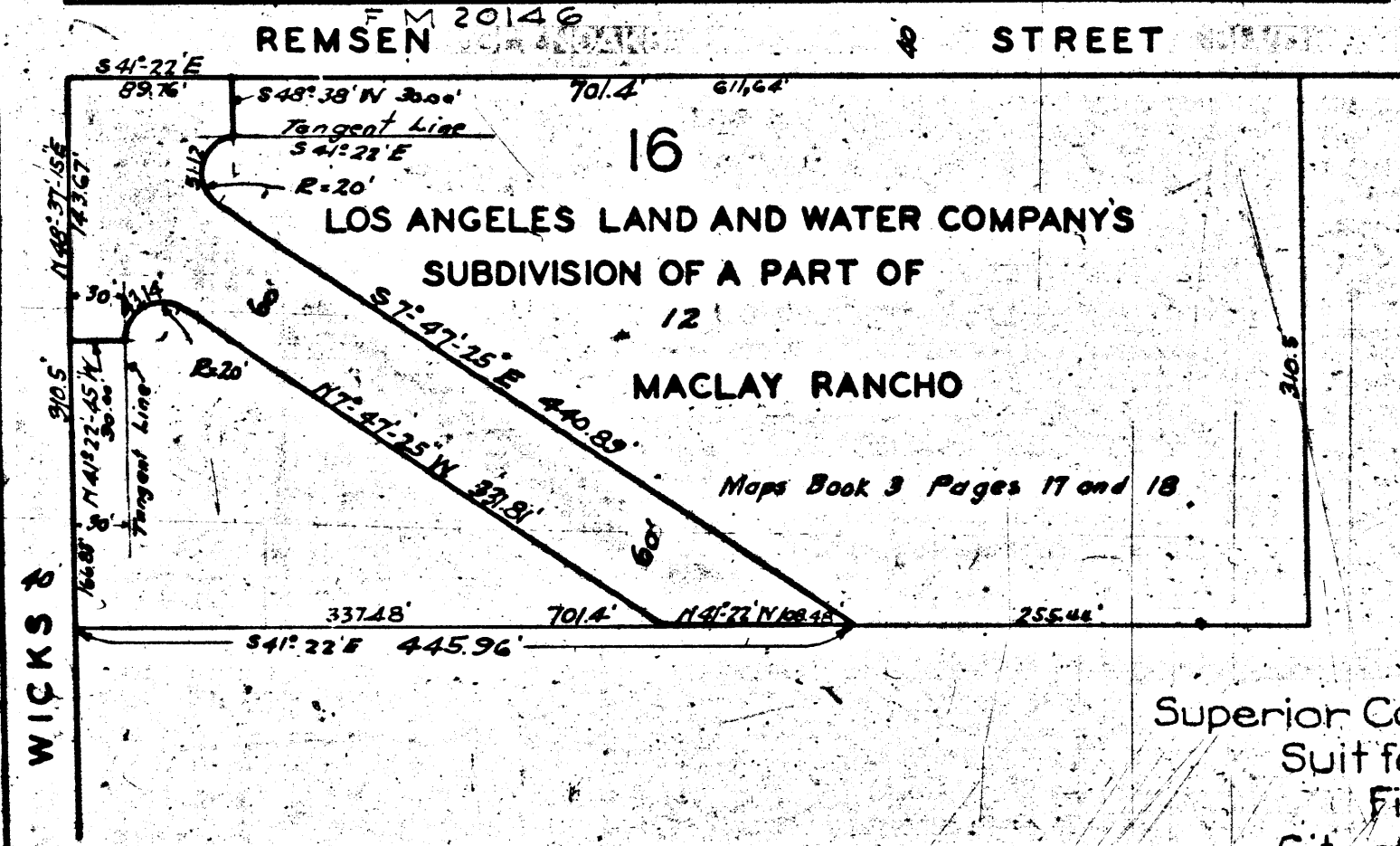
A-2335

A-2335

WICKS AVENUE

WICKS AVENUE

REMSEN STREET



A-2335

A-2335

MAP
 SHOWING THE LAND
 TO BE CONDEMNED
 FOR THE
 LAYING OUT AND OPENING
 OF A
NEW STREET
 TO BE KNOWN AS
FARMDALE AVENUE
 EXTENDING FROM
 THE INTERSECTION OF
WICKS AVENUE AND REMSEN STREET
 IN A
 GENERAL SOUTHERLY DIRECTION
 A DISTANCE OF
 APPROXIMATELY FIVE HUNDRED FIFTY (550) FEET
 IN THE CITY OF
LOS ANGELES CALIF.

IN ACCORDANCE WITH ORDINANCE NO. 61920
 JOHN C. SHAW CITY ENGINEER OCTOBER 1928.
 SCALE: 1 IN. = 100 FT.

Sheet 53
 Superior Court Case No. 267132
 Suit for Condemnation
 Filed Dec. 6, 1928
 City of Los Angeles, Pltff.
 Vs.
 Marion Reidy et al. Def.

Interlocutory judgment as per
 map, rendered July 7th 1931.
 Judg. Bk. 788-234.
 Final judgment in favor of Pltff.
 as per map, rendered Aug. 5th, 1931.

D: 84-237, O. R. 11021-204

Notes
 Land to be condemned shown colored red
 The bearing 541° 22' E of the southwesterly line of Center Street
 (now Remsen Street) as shown on map of Los Angeles Land and
 Water Company's Subdivision of a part of Maclay Rancho,
 recorded in Book 3 Pages 17 and 18 of Maps, records of
 Los Angeles County was taken as the basis of bearings shown
 on this map.

