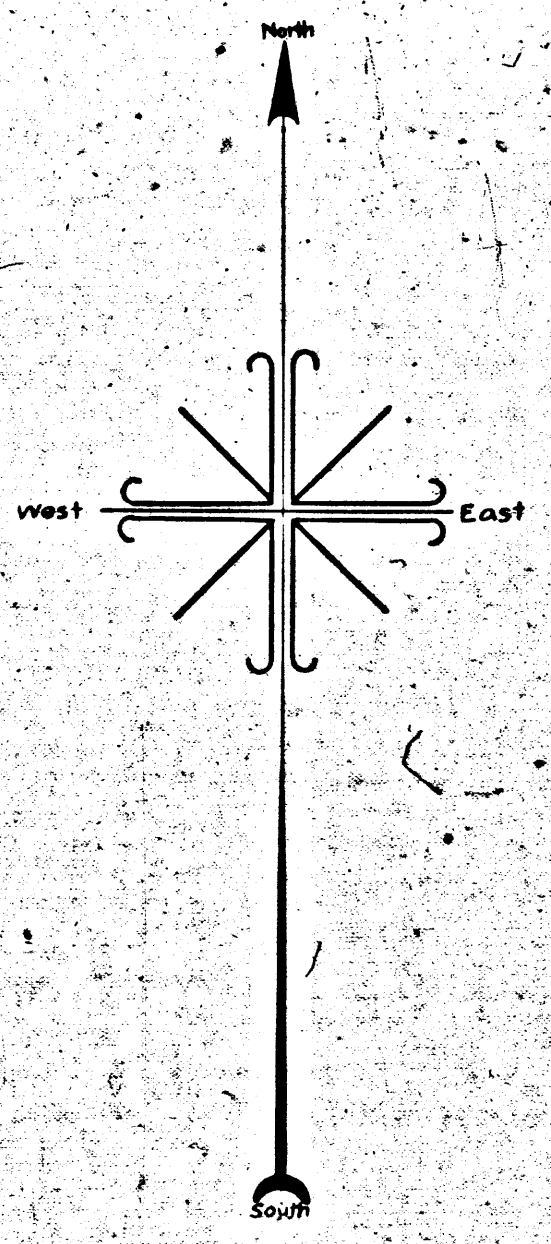
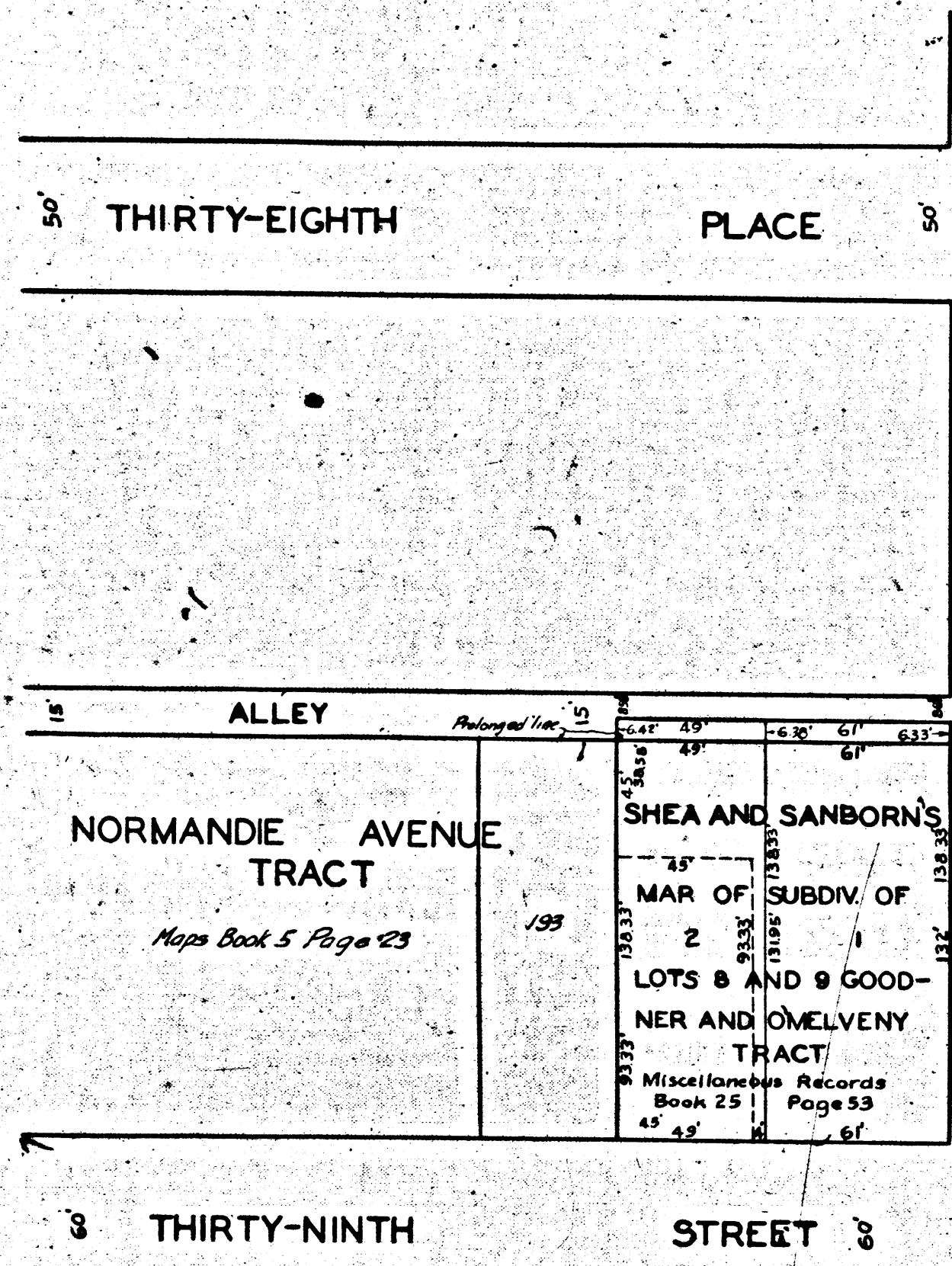


A-2340

PLAN OF LOG INTERESTS
IN THE
CITY OF LOS ANGELES

A-2340



MAP
 SHOWING THE
LAND TO BE CONDEMNED
 FOR THE
WIDENING OF THE FIRST
ALLEY
 SOUTHERLY OF THIRTY-EIGHTH PLACE
 FROM
 BUDLONG AVENUE
 TO
 A POINT ONE HUNDRED TEN (110)
 FEET WESTERLY THEREOF

*Superior Court Case No. 268581
 Suit for Condemnation
 Filed Dec. 29th 1929
 City of Los Angeles, Plaintiff
 Vs
 Allan A. Anderson et al., Def.
 Interlocutory judgment as per
 map, rendered June 6th 1929.
 Judg. Bk. 710-396.
 Case dismissed Apr. 2nd 1930.*

IN THE
 CITY OF LOS ANGELES CAL
 IN ACCORDANCE WITH ORDINANCES NOS. 60602 AND 62159
 JOHN C. SHAW CITY ENGINEER NOVEMBER 1928
 SCALE: 1 IN = 50 FEET

*Land to be condemned shown colored red.
 Dotted lines and dimensions show property holdings in those cases
 where they differ from recorded subdivisions.*

Sht. 24

