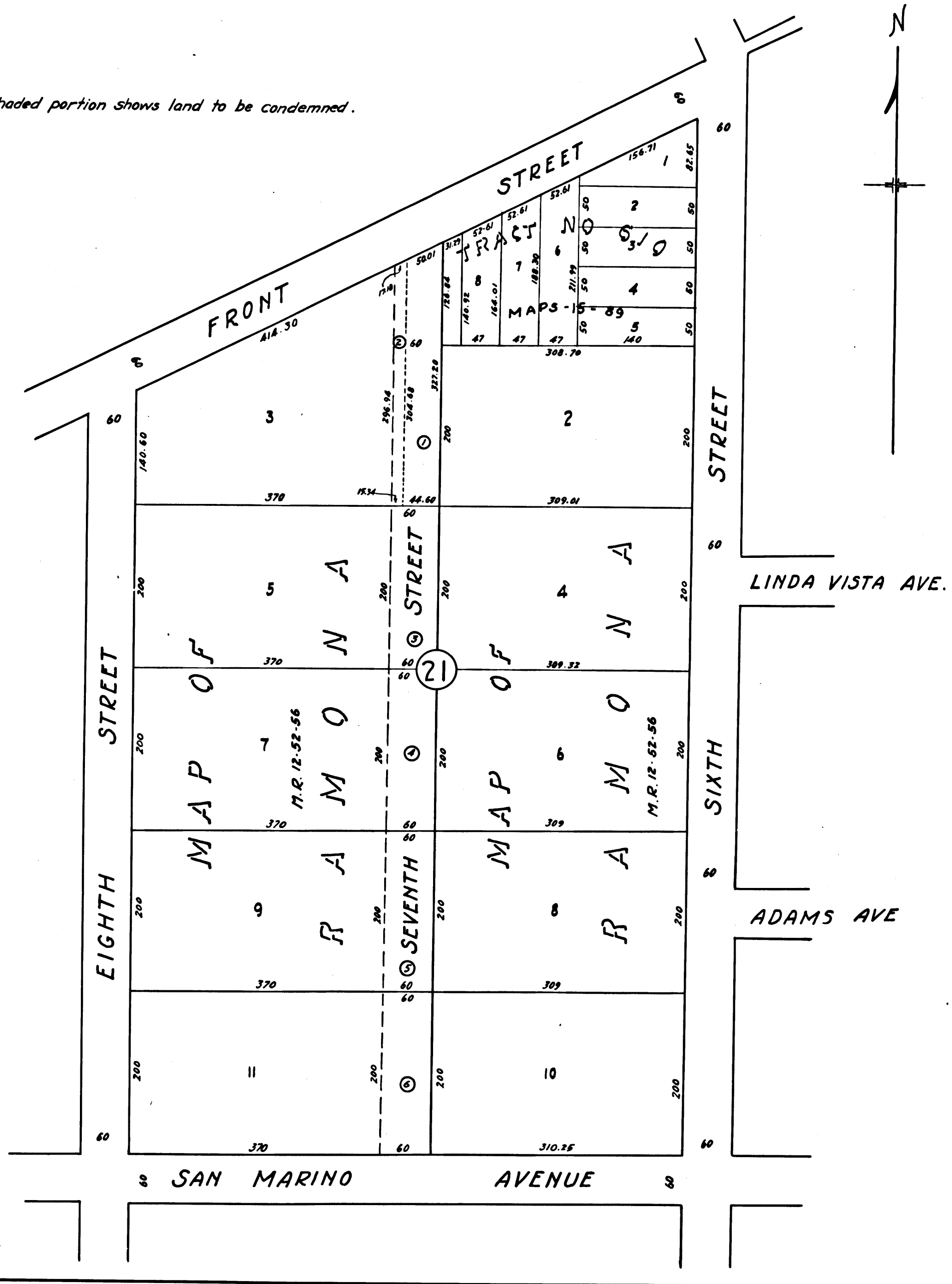


MAP  
 SHOWING LAND SOUGHT TO BE CONDEMNED  
 FOR THE OPENING OF  
**SEVENTH STREET**  
 FROM  
 SAN MARINO AVENUE TO FRONT STREET  
 IN THE CITY OF ALHAMBRA-COUNTY OF LOS ANGELES,  
 STATE OF CALIFORNIA  
 May 1925 Scale - 1"=100'  
 M. H. Irvine - City Engineer

☐ Shaded portion shows land to be condemned.



C.F. 1687 -

Superior Court Case No. 172091  
 Suit for Condemnation  
 Filed June 15<sup>th</sup> 1925  
 City of Alhambra - Pltff  
 Vs.  
 William J. Walton, etal Def.

EXHIBIT 'C'

Final judgment in favor of Pltff, as per  
 map, rendered January 29, 1929

D:72-187 O.R. 8121-210

Sheet 43

C.D.P.