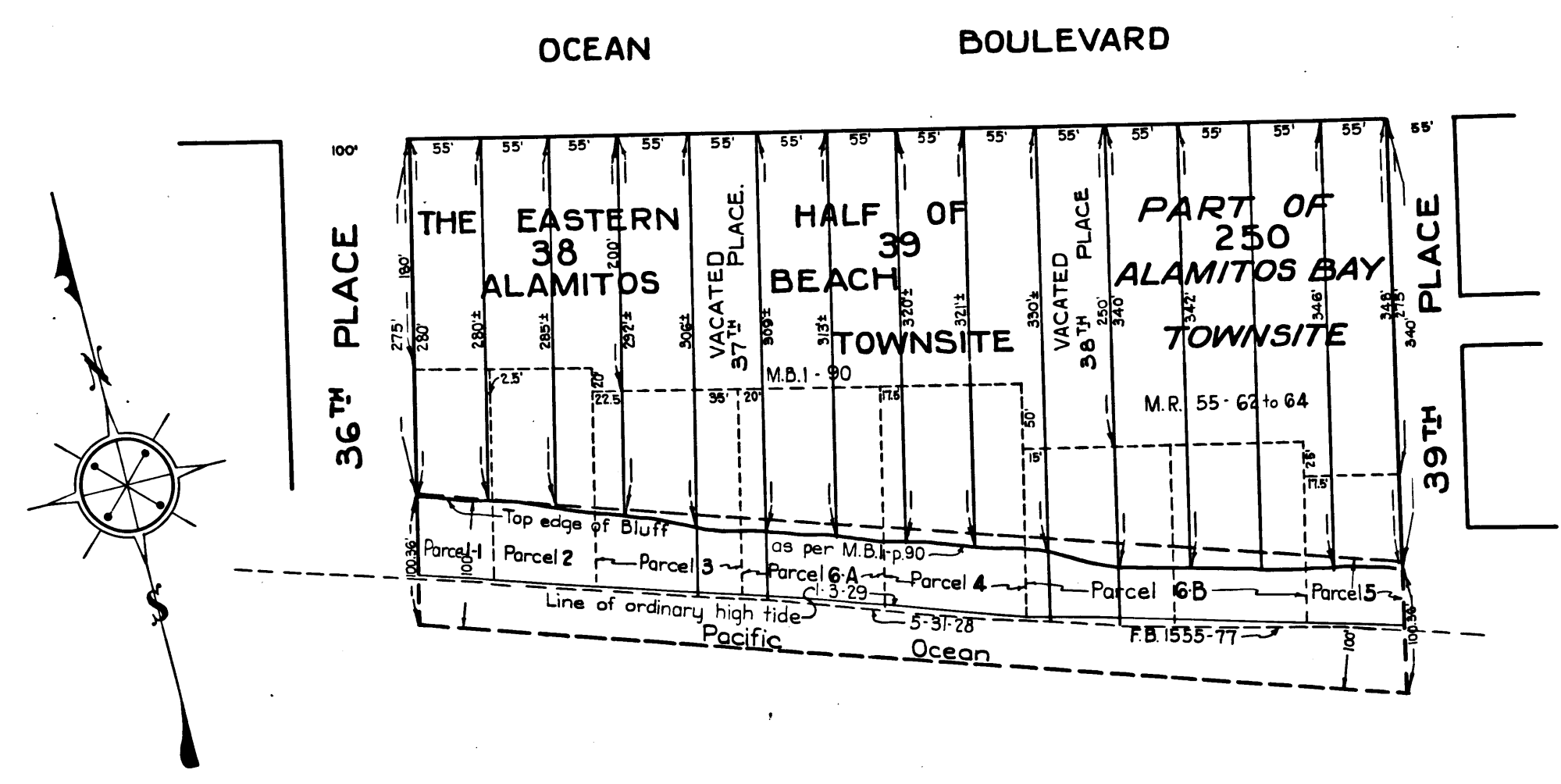


Sht-31

Note:-
Being condemned for the opening of SEASIDE BOULEVARD.
County Surveyor.

Sht.31
EXHIBIT "C"

Superior Court Case No. LBC-2439
Suit for Condemnation
Filed Apr. 3rd 1929
City of Long Beach, Plff.
Vs.
May E. Hart et.al. Def.
Case dismissed June 27th 1930.



Scale : 1" = 100'
Land to be taken outlined in red.

C.F. 1688 -

MEMCO PASADENA, CAL.

MEMCO PASADENA, CAL.