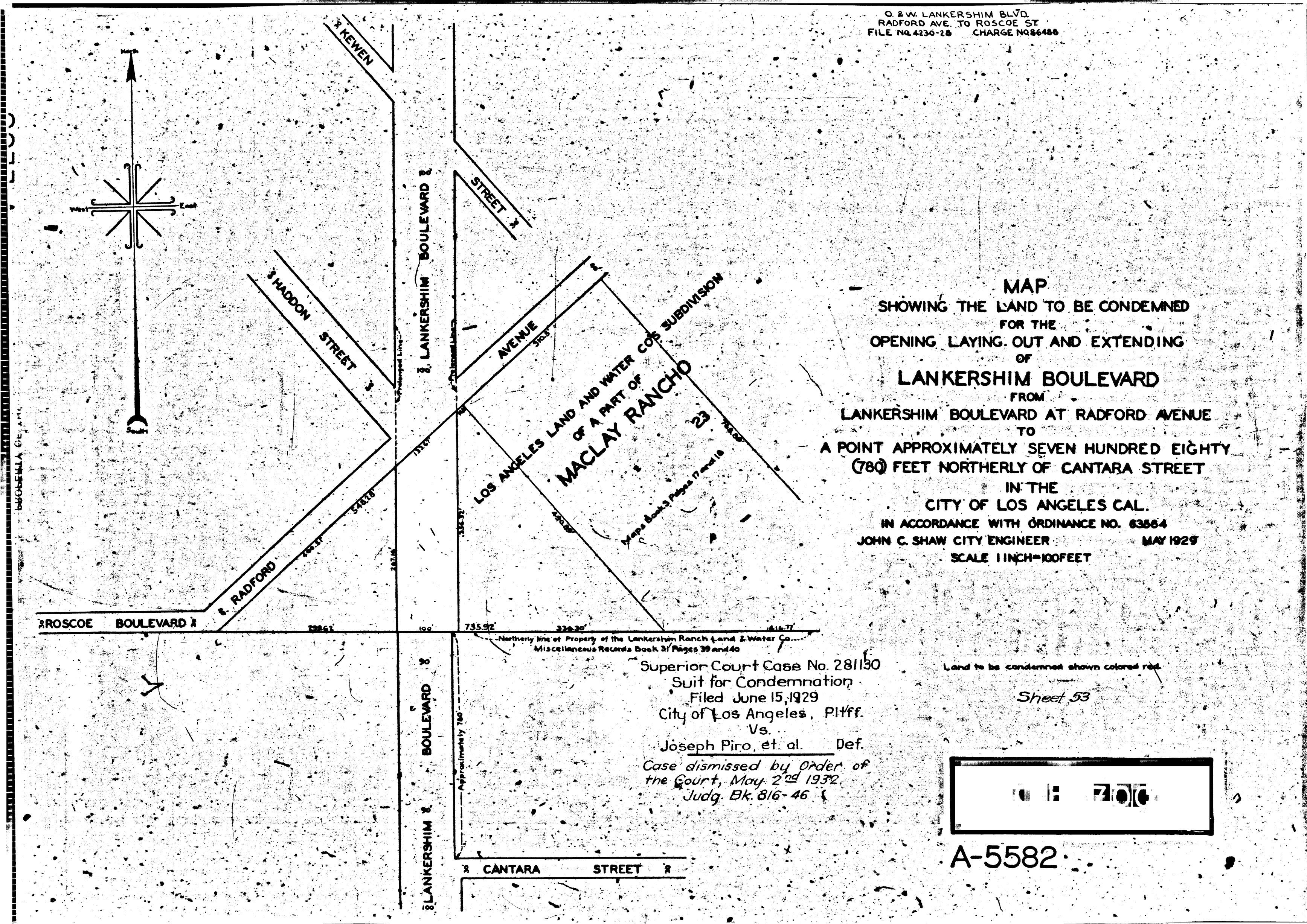
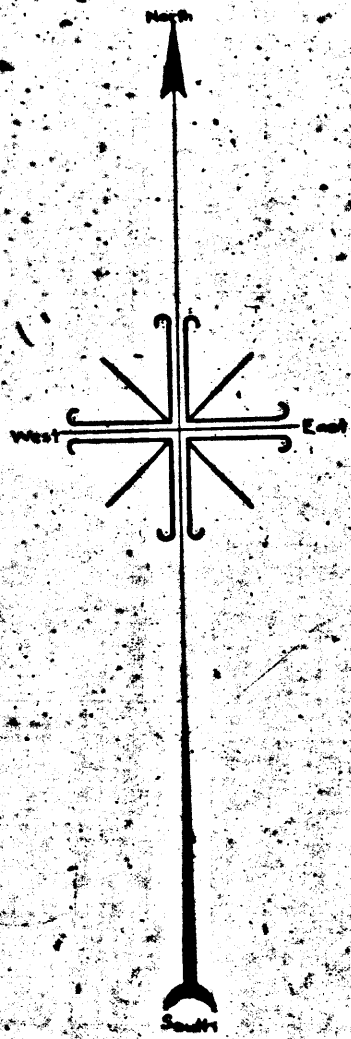


O. & W. LANKERSHIM BLVD.
RADFORD AVE. TO ROSCOE ST.
FILE NO. 4230-28 CHARGE NO. 86486



MAP
SHOWING THE LAND TO BE CONDEMNED
FOR THE
OPENING LAYING OUT AND EXTENDING
OF
LANKERSHIM BOULEVARD
FROM
LANKERSHIM BOULEVARD AT RADFORD AVENUE
TO
A POINT APPROXIMATELY SEVEN HUNDRED EIGHTY
(780) FEET NORTHERLY OF CANTARA STREET
IN THE
CITY OF LOS ANGELES CAL.
IN ACCORDANCE WITH ORDINANCE NO. 63564
JOHN C. SHAW CITY ENGINEER MAY 1929
SCALE 1 INCH=100 FEET

Superior Court Case No. 281130
Suit for Condemnation
Filed June 15, 1929
City of Los Angeles, Plff.
Vs.
Joseph Piro, et al. Def.
Case dismissed by Order of
the Court, May 2nd 1932
Judg. Ek. 816-46

Land to be condemned shown colored red

Sheet 53



A-5582