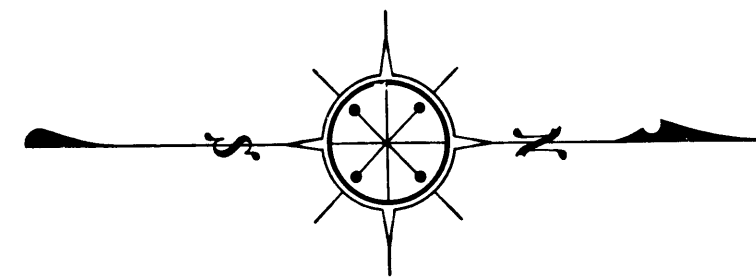


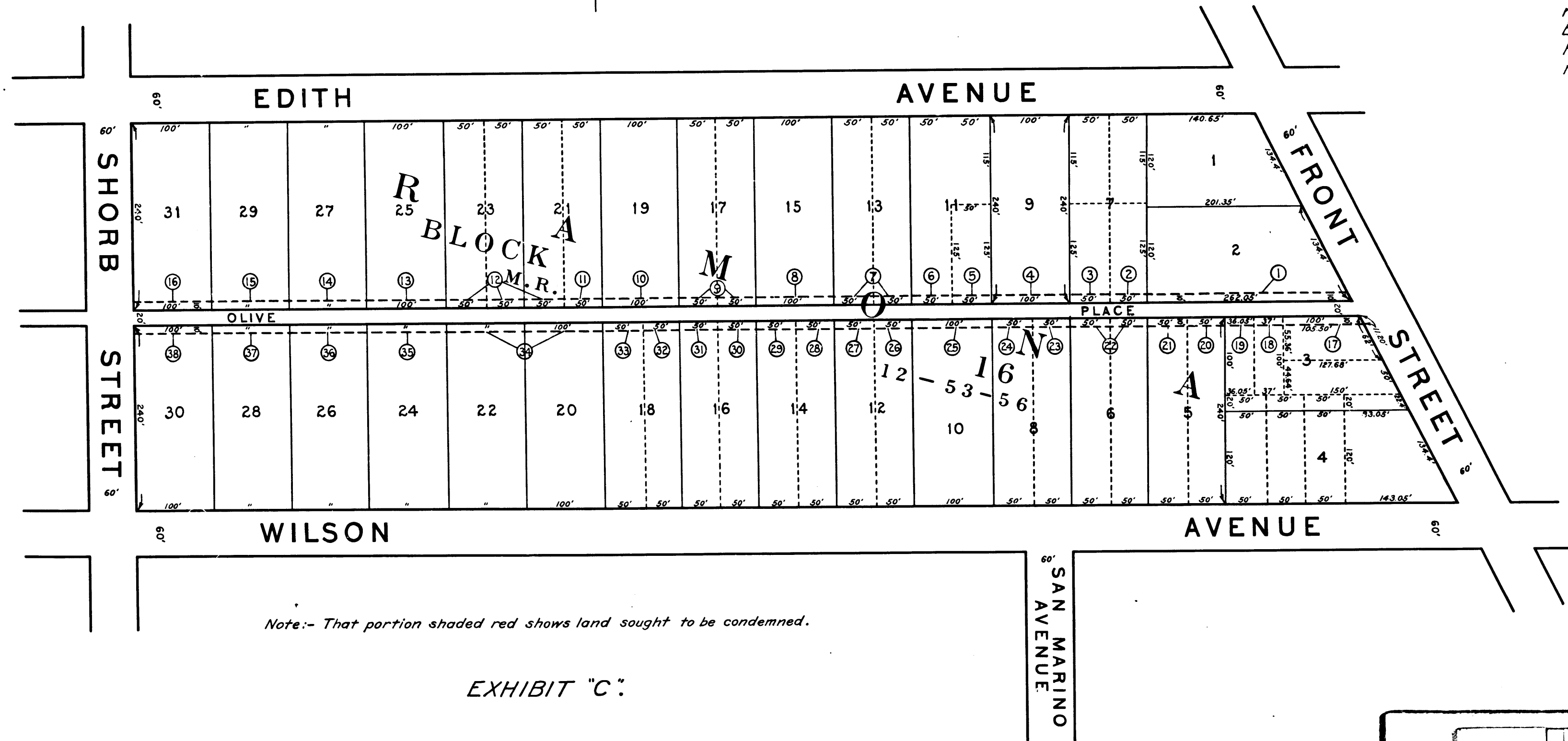
M A P
 SHOWING LAND SOUGHT TO BE CONDEMNED
 FOR THE WIDENING OF OLIVE PLACE
 BETWEEN SHORB STREET AND FRONT STREET
 IN THE CITY OF ALHAMBRA COUNTY OF LOS ANGELES
 STATE OF CALIFORNIA.

Scale 1" = 100'.



Sh. 43
 Superior Court Case No. 278515
 Suit for Condemnation
 Filed May 15, 1929
 City of Alhambra, Plaintiff
 vs.
 Erwin Covey, et al., Defendants

*Interlocutory judgment as per map,
 rendered May 26th 1930. Judg.
 Ek. 750-367.
 Final judgment in favor of Pltff, as per
 map, rendered July 13th, 1931.
 D:21-71 Judg. Bk 788-198*



Olive Place changed to Olive Ave. - D:88-29, Ord. 1660

EXHIBIT "C".

C.F. 1703 -