

EXHIBIT 'A'
 STREET OPENING DISTRICT NO. 89
 OF THE COUNTY OF LOS ANGELES
 FOR
 THE OPENING, WIDENING AND EXTENDING
 OF
MAPLE AVENUE
 MAP SHOWING PROPERTY TO BE ACQUIRED IN ACCORDANCE
 WITH THE PROVISIONS OF THE "COUNTY STREET OPENING
 ACT OF 1923", APPROVED MAY 11, 1923.
 SCALE: 1"=100'. J.E. ROCKHOLD - COUNTY SURVEYOR MAY, 1929.

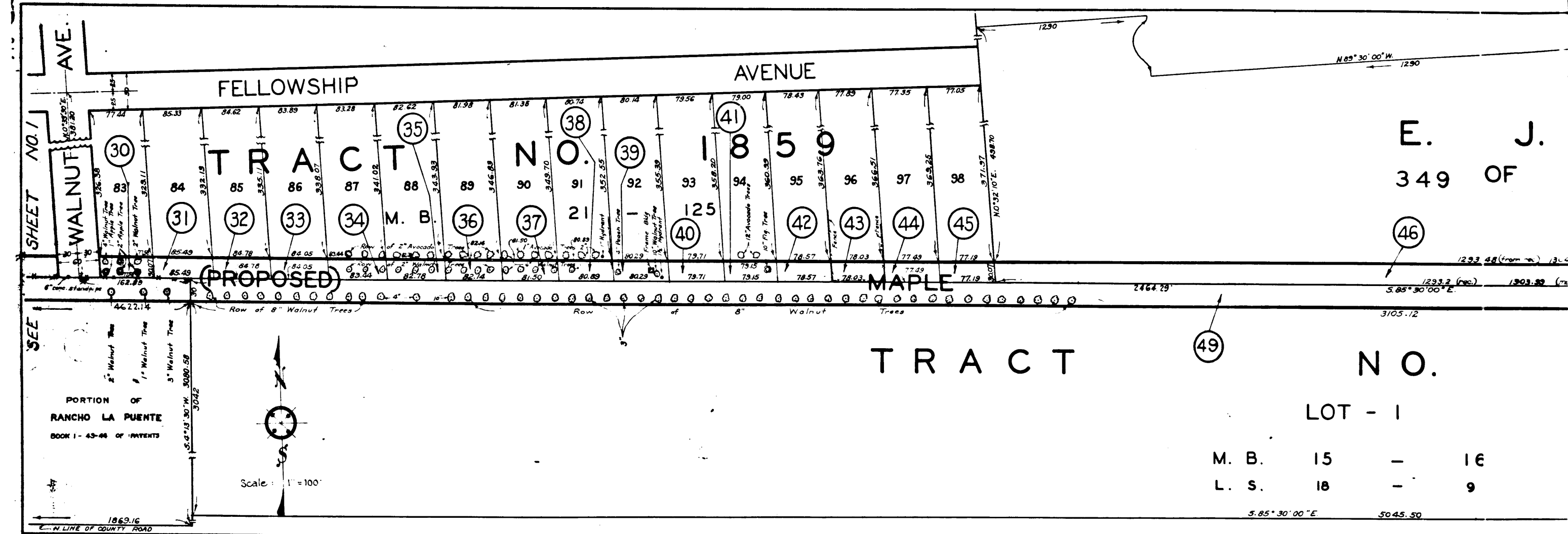
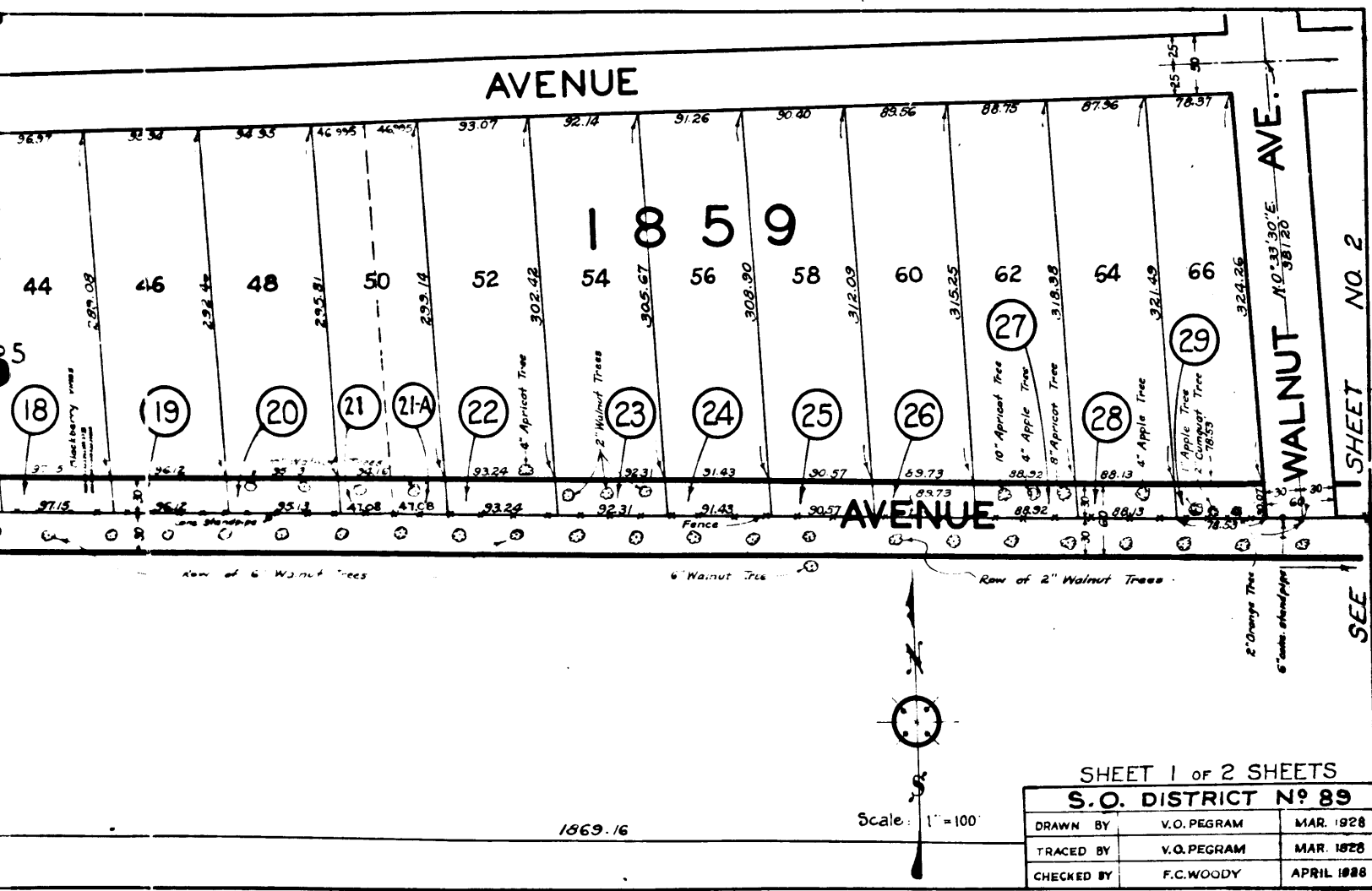
LEGEND
 Land sought to be acquired shown in Red.
 Numbers in circles indicate parcels sought to be condemned.
 The parcels are described in paragraph VII of the complaint.
 Portion colored red shows location, general route and
 termini of public road to be condemned.

Sht. 38
 Superior Court Case No. 2835-43
 Suit for Condemnation
 Filed July 15th 1929
 vs
 Henri Andros et al. Def.

*Negative of this map filed in Div. 1
 Print Dept. under No. M. 152 (2 SHEETS)*

S. C. DISTRICT NO. 89	
DRAWN BY	V.O. PEGRAM
TRACED BY	V.O. PEGRAM
CHECKED BY	F.C. WOODY
MAY 1929	MAY 1929
MAY 1929	MAY 1929

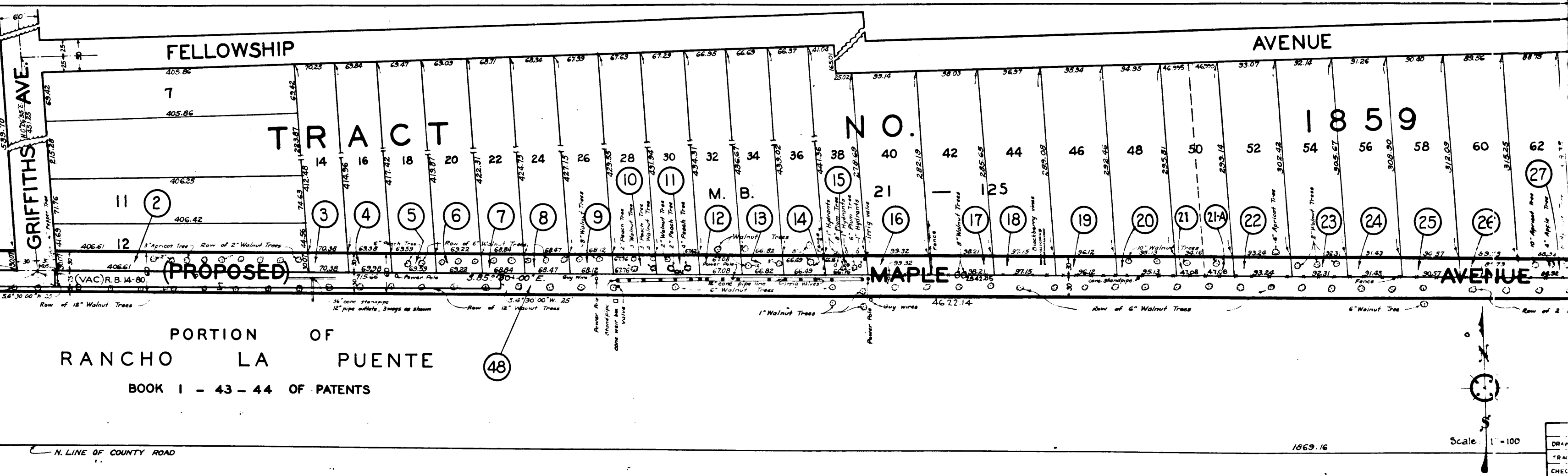
1
 C.F. 1706 -



2

C.F. 1706 -

LUDWIN'S FIFTH SUBDIVISION
PORTION OF RANCHO LA PUENTE
LOT 12 - 345



2758.18

N. LINE OF COUNTY ROAD

1069.16

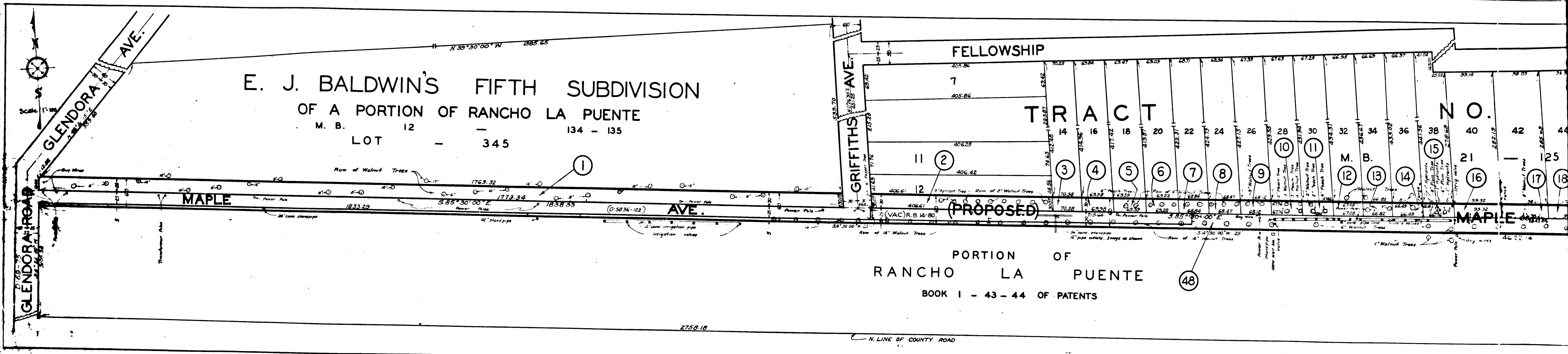
Scale 1" = 100'

DRW
TRAC
CHECK

3

C.F. 1706 -

88 IN. TIRAZI D. Q. 2 D. DISTRICT No. 88
SUNVA SLOM
CIBEL 1706 S. STEAK
S. STEAK 5 1/2 T. STEAK
S. STEAK 5 1/2 T. STEAK
S. STEAK 5 1/2 T. STEAK



4

C.F. 1706 -