

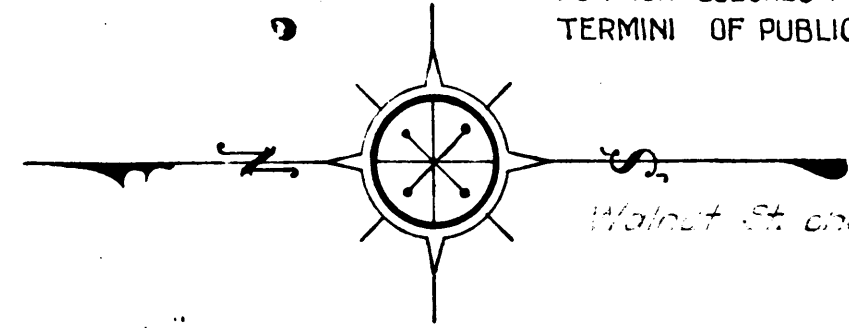
**EXHIBIT "A"**  
**ACQUISITION AND IMPROVEMENT DISTRICT NO 63**  
**OF THE COUNTY OF LOS ANGELES**  
 FOR  
**THE OPENING, WIDENING, EXTENDING, IMPROVEMENT OF & WORK UPON**  
**WALNUT STREET**

MAP SHOWING PROPERTY TO BE ACQUIRED IN ACCORDANCE WITH THE PROVISIONS OF THE "ACQUISITION AND IMPROVEMENT ACT OF 1925" APPROVED MAY 23, 1925.

SCALE : 1 in. = 60 Ft. AUGUST, 1927  
 J.E. ROCKHOLD, COUNTY SURVEYOR.

~ LEGEND ~

LAND SOUGHT TO BE ACQUIRED COLORED RED.  
 NUMBERS IN CIRCLES INDICATE PARCELS SOUGHT TO BE CONDEMNED.  
 THE PARCELS ARE DESCRIBED IN PARAGRAPH VII OF THE COMPLAINT  
 PORTION COLORED RED SHOWS LOCATION, GENERAL ROUTE, AND  
 TERMINI OF PUBLIC ROAD TO BE CONDEMNED.  
 Sht. 24



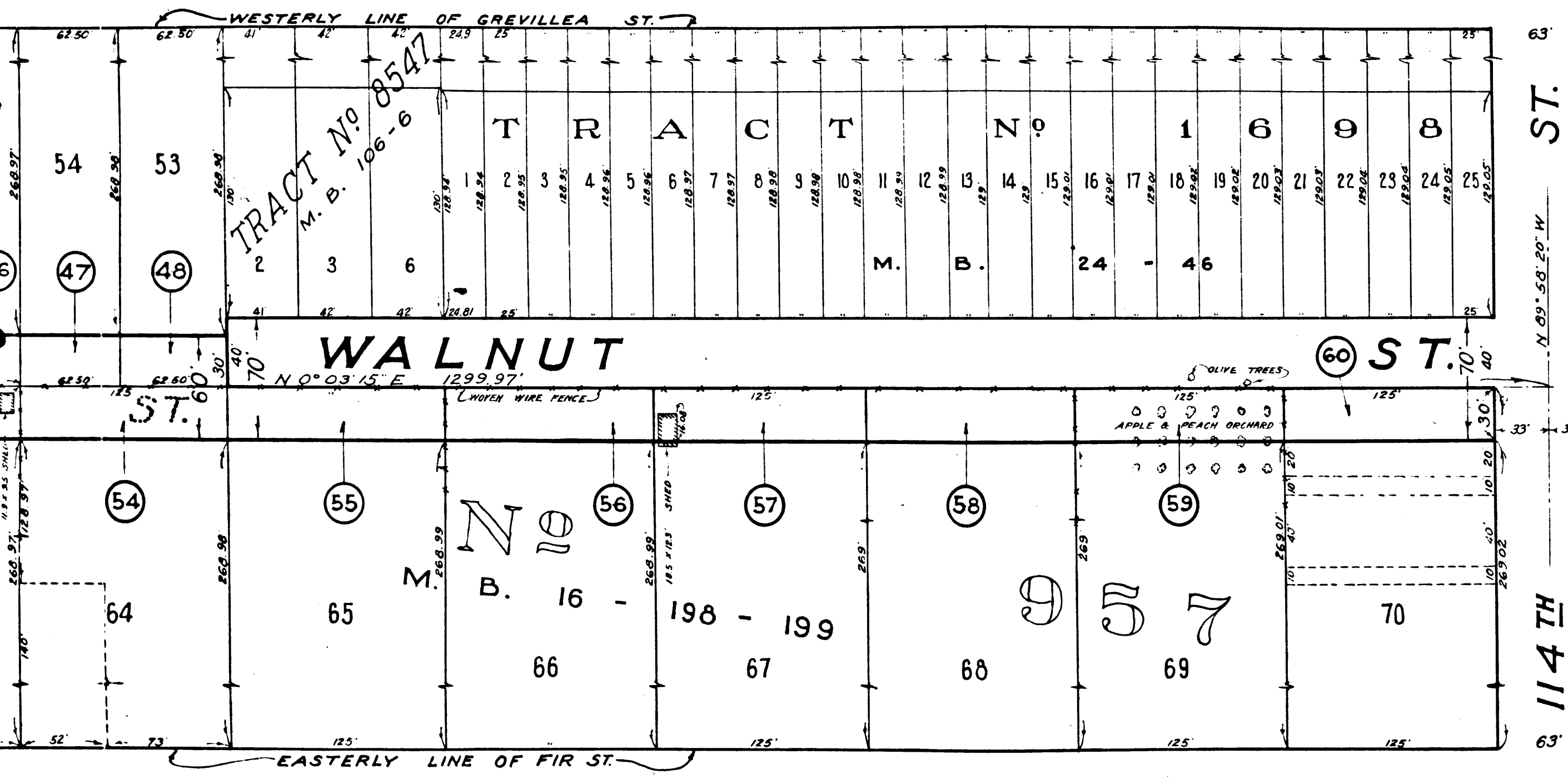
Superior Court Case No. 283542  
 Suit for Condemnation  
 Filed July 15th 1927

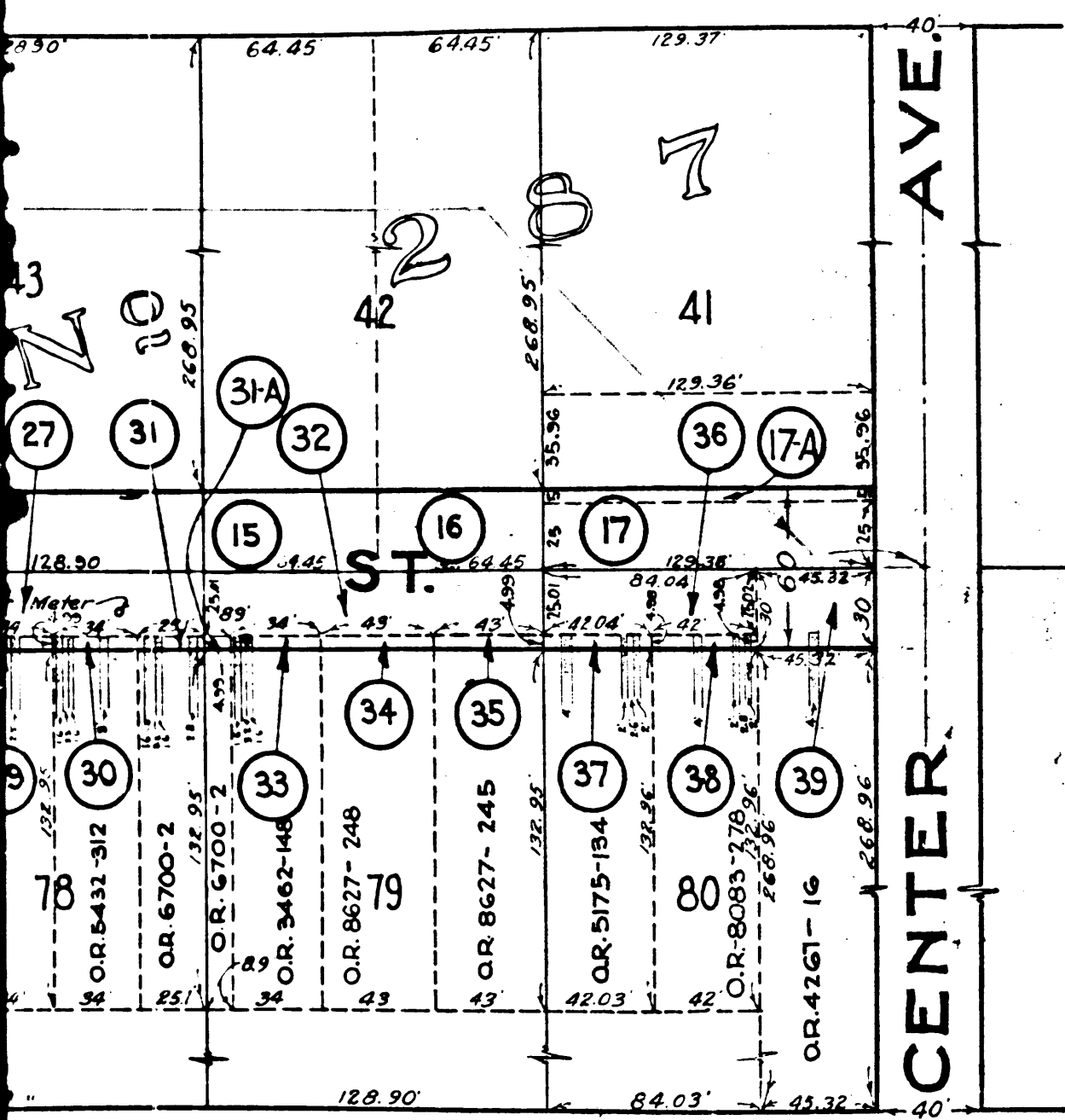
Sheet 2 of 2 Sheets

A.&I. DISTRICT NO 63		
DRAWN BY	H.H. Woodley	July, 1927
TRACED BY	H.H. Woodley	July, 1927
CHECKED BY	T.J. Giboney	July, 1927

County of Los Angeles, Hitt  
 Adelaide May Andersen  
 Com. filed Nov. 19, 1935.

C.F. 1707 -

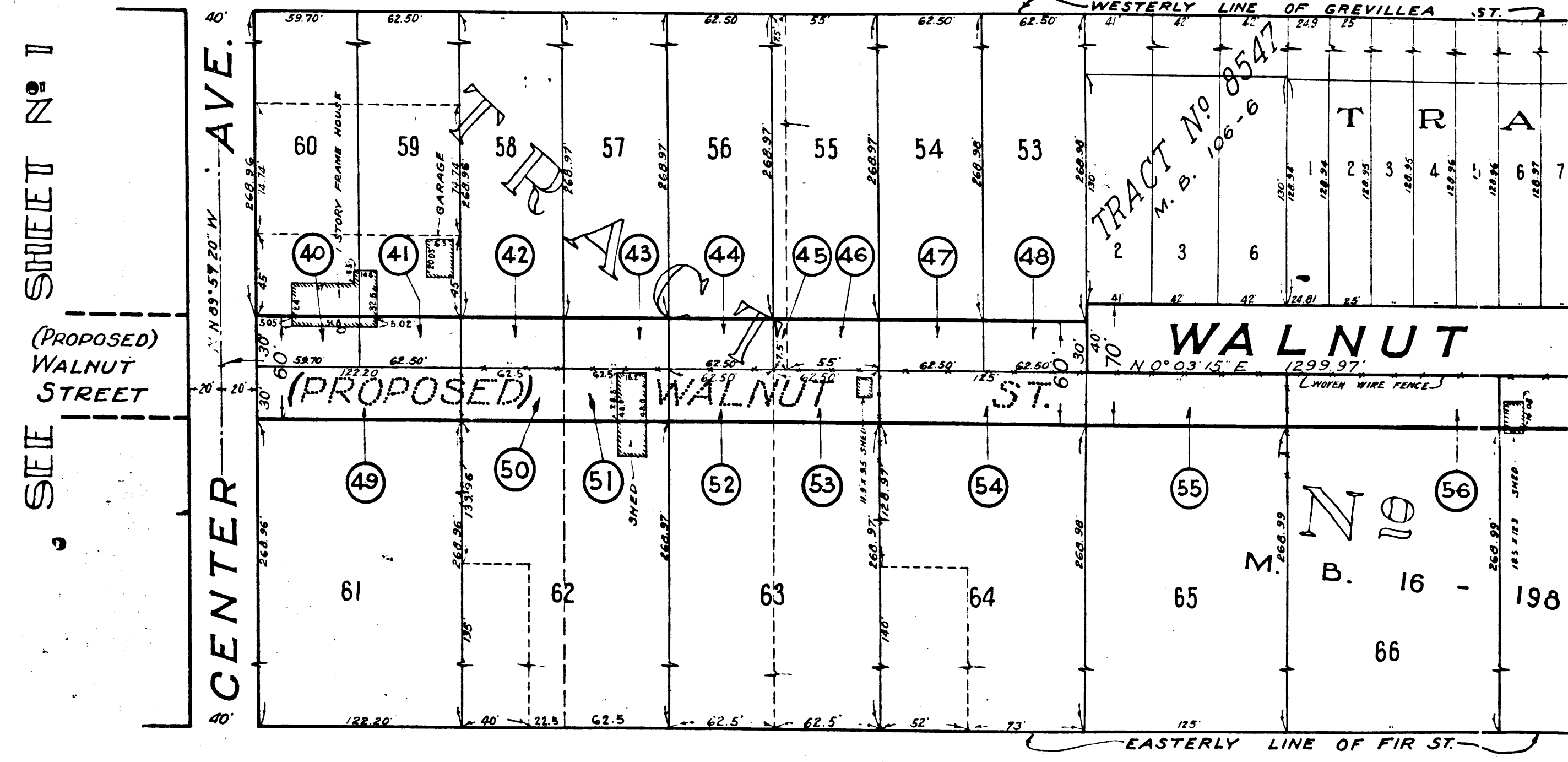




Sheet 1 of 2 Sheets

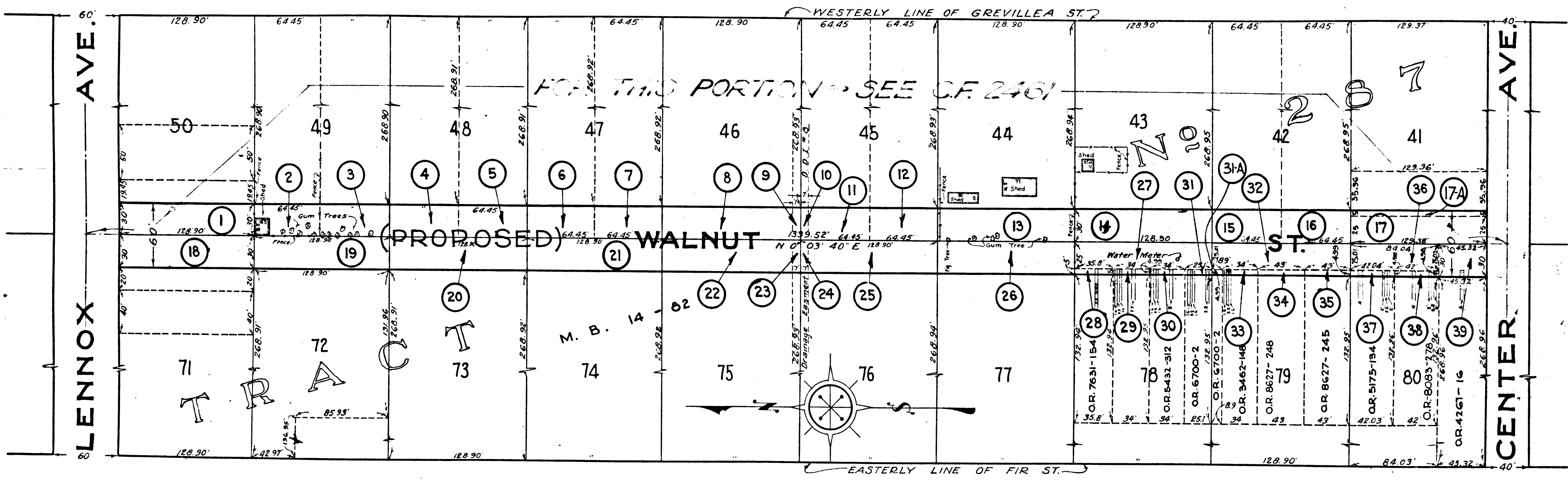
A&I DISTRICT No	63
DRAWN BY	H.Woodley MAY, 1927
TRACED BY	H.Woodley MAY, 1927
CHECKED BY	F.C.Woody July, 1927

SEE SHEET N<sup>o</sup> 2



SEE SHEET N<sup>o</sup> 1





ALL DIST.  
DRAWN BY  
TRACED BY  
CHECKED BY

3

C.F. 1707 -