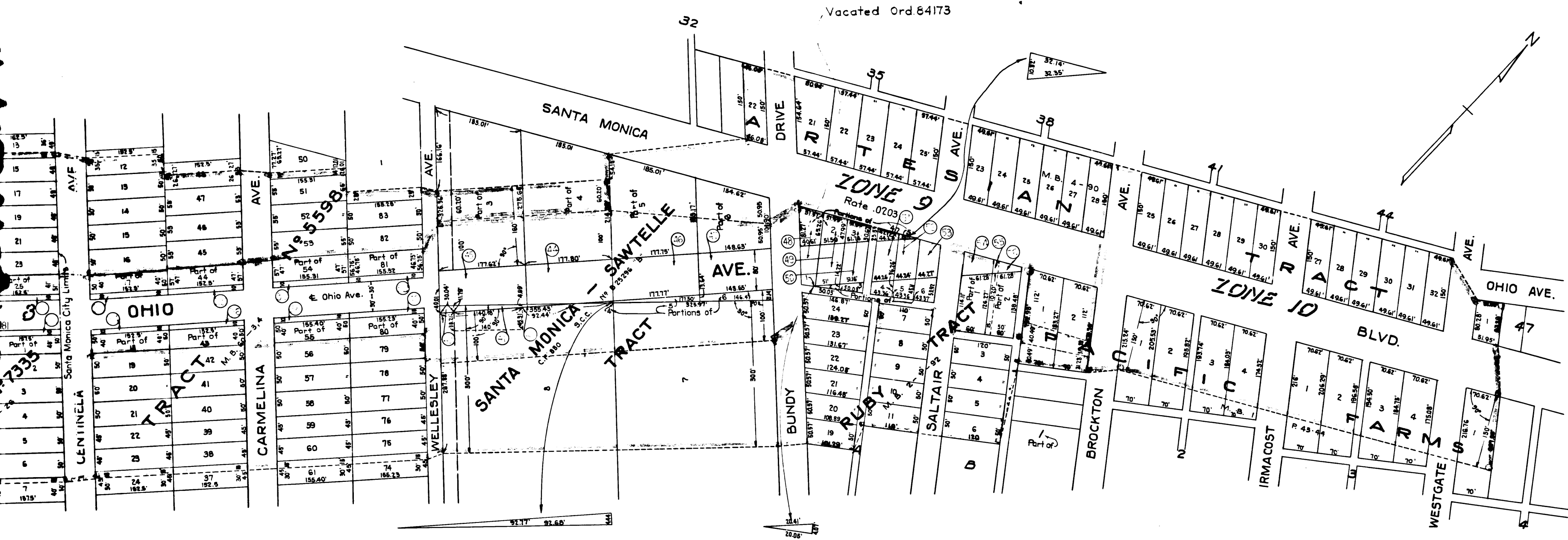


DIVISION ENGINEER'S APPROVAL

Division	Signature	Date
O. & W. Engineer	J. R. Quinn	10-16-28
Street Design Engineer	E. J. Shultz	10-15-28
Sanitary Sewer Design Engineer	H. W. Paulkay	10-16-28
Storm Drain Design Engineer	F. W. C. ...	10-17-28
Bridge Design Engineer	M. Butler (H.W.)	10-19-28
Street Lighting Engineer	W. E. ...	10-25-28
Water Department Engineer	W. E. ...	10-6-28
Sanitary Engineer	E. A. Tuttle (S)	10-19-28
Drainage Engineer	E. A. Tuttle (S)	10/17/28

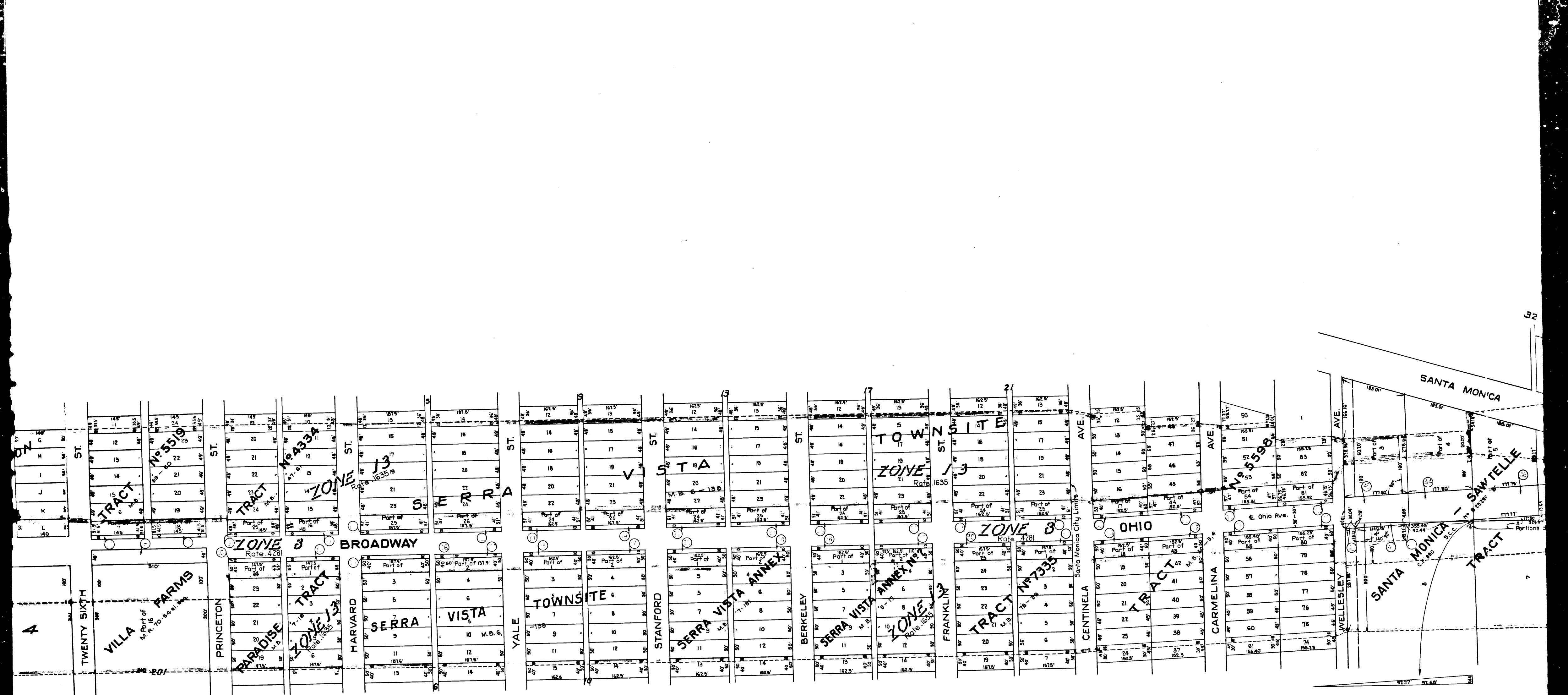
Approved: *[Signature]* 2, 1928
 BY: *[Signature]*
 DISTRICT ENGINEER

Superior Court Case No. 278731
 Suit for Condemnation —
 Filed May 17, 1929
 City of Santa Monica, Pltff.
 Vs.
 Grace E. Tacker et al, Def.
 Interlocutory judgment as per
 map, rendered Feb. 21st 1930.
 Judg. Bk. 745-303.
 Final judgment in favor of Pltff, as
 per map, rendered April 15, 1930.
 D:80-161 O.R. 9914-220



Note:—
 Sht. 21
 Parcels of land to be taken lie within the 80' Street
 except near Bundy Drive and Santa Monica Blvd. where
 additional land is taken as indicated by arrow marks.

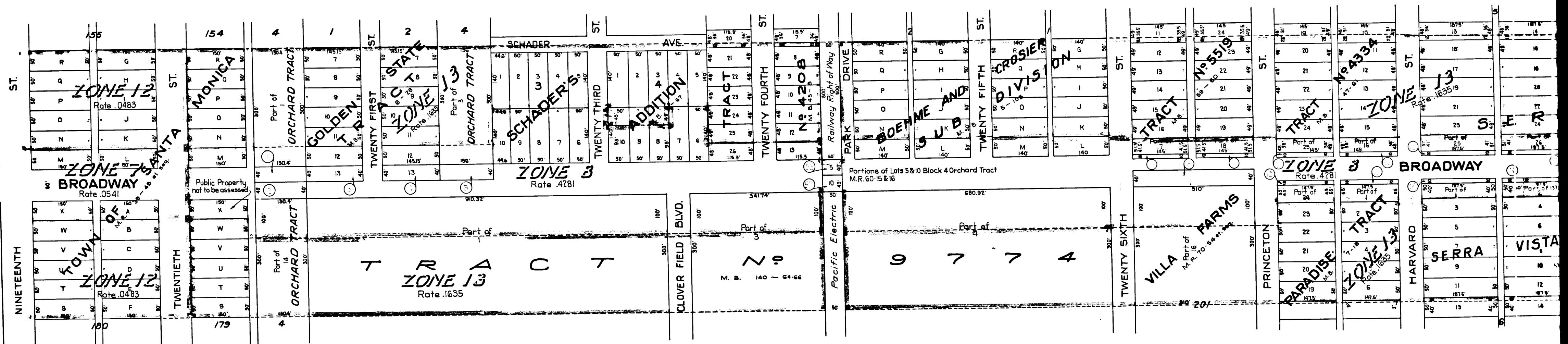
C.F. 1708 -



2

C.F. 1708 -

See Sheet 2



3

C.F. 1708 -