

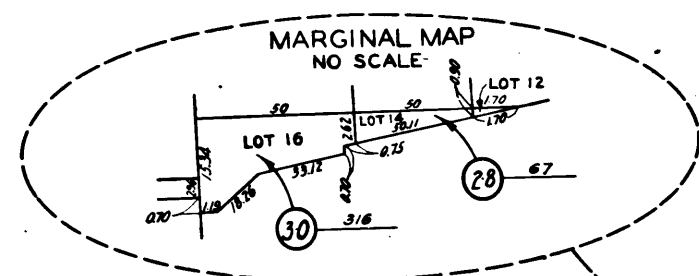
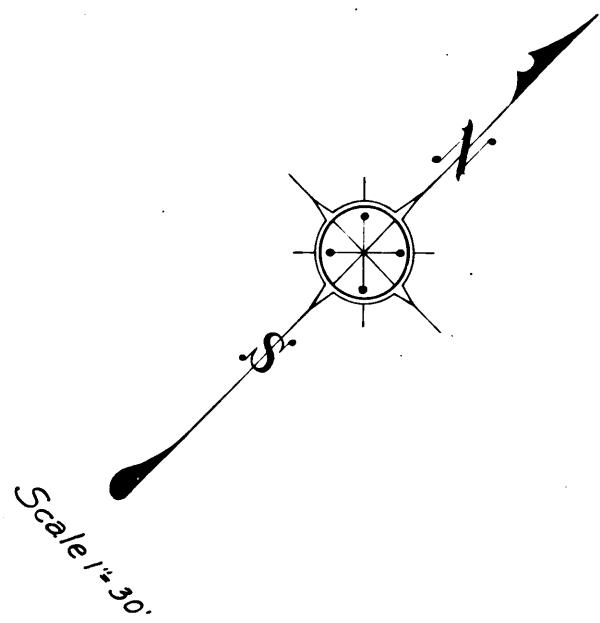
Sht. 2  
 Superior Court Case No. 287164  
 Suit for Condemnation  
 Filed Sept. 23<sup>rd</sup> 1923  
 County of Los Angeles, Plff.  
 vs.  
 Adjustment Corporation et al., Def.  
 Interlocutory judgment as to parcels 23, 25 & 32 rendered June 13<sup>th</sup> 1930. Judg. Bk. 749-354.  
 Interlocutory judgment as to parcels 5, 16, 17, 20, 21, 22, 36, 52 to 57 & 61 rendered July 31<sup>st</sup> 1930. Judg. Bk. 753-383.  
 Interlocutory judgment as to parcels 1, 2, 4, 6, 9 to 15, 18, 19, 24, 26, 30 & 31 rendered Aug. 6<sup>th</sup> 1930. Judg. Bk. 760-311.  
 Interlocutory judgment as to parcels 3, 7, 8 & 38 rendered Aug. 27<sup>th</sup> 1930. Judg. Bk. 752-283.  
 Interlocutory judgment as to parcels 57, 59 & 60 rendered Oct. 1<sup>st</sup> 1930. Judg. Bk. 66-152.  
 Interlocutory judgment as to parcels 26, 33, 34, 35, 37, 39 to 51 rendered Jan. 19<sup>th</sup> 1931. Judg. Bk. 733-8.  
 Interlocutory judgment as to parcels 62 to 61 rendered Feb. 12<sup>th</sup> 1931. Judg. Bk. 771-176.  
 Final judgment in favor of Plff. as per as to parcels 23, 25, 32, rendered Sept. 16, 1931. D. 65-243 C.R. 11183-K9.  
 Dred - 10/12/23-7

Per New High St wanted - See C.S. 8832, Sht. 1.  
 [For deed of Reversionary Rights to part of Parcels 46, 47, 48, 49, 50, 51, 52, 53, 54, 55, 56, 57 & 60. Also street easements in Braun Tract, Arcadia Street Tract & marked P. Beaudry. See 21-15-73, C.R. 11183-K9.]

NOTE: This is not an exact copy of the map filed in this case.

C.F. 1716 -

CIVIL ENGINEER  
 DRAWN BY  
 TRACED BY  
 CHECKED BY



C.F. 1716 -