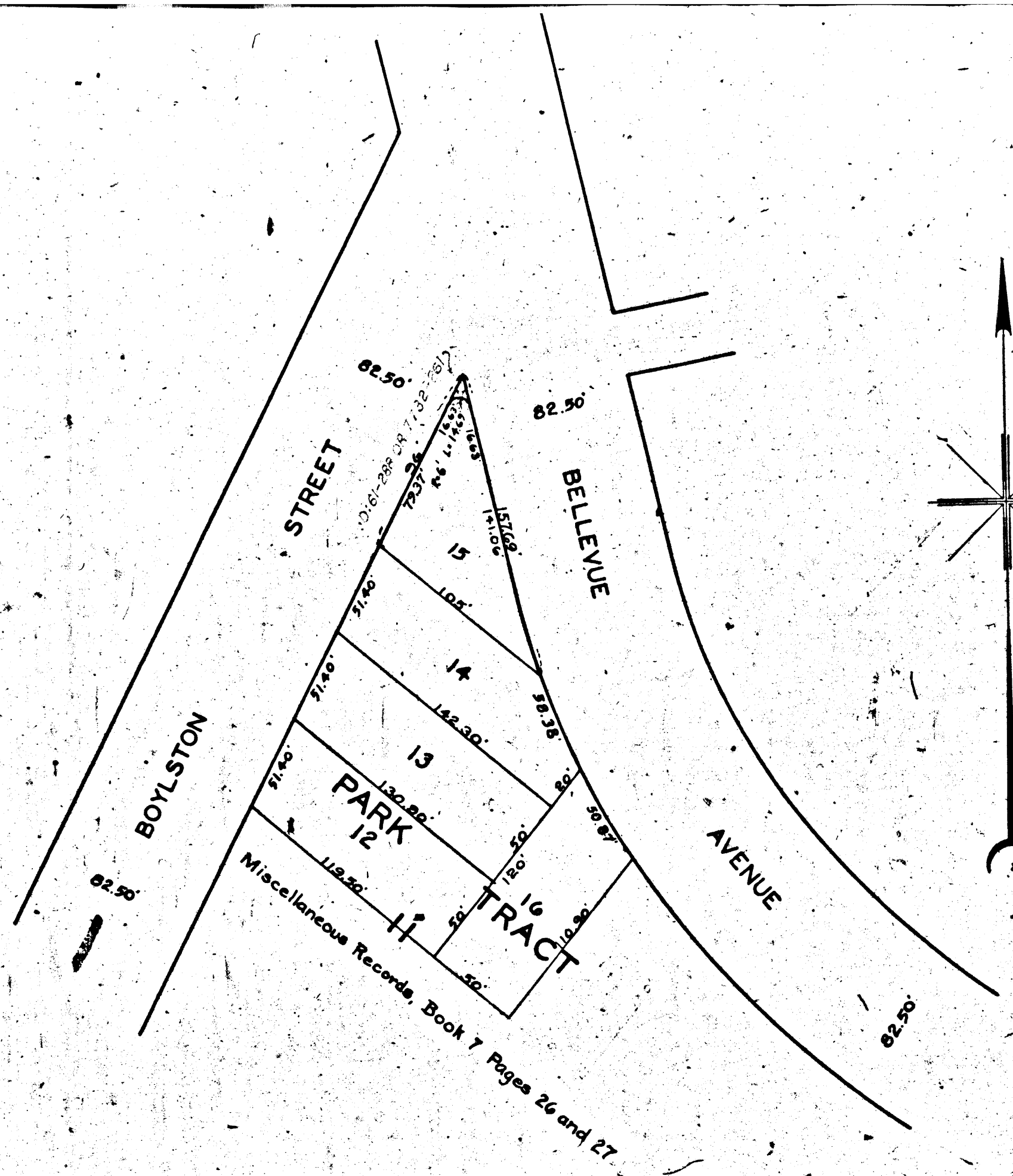


CCAA-A

A-5622

CITY OF LOS ANGELES  
BOBBEY DE AHE



Bellevue Ave. & Boylston St. (Sly Corner)  
Charge No. 88778 File No 10808-27

**MAP**  
 SHOWING THE LAND TO BE CONDEMNED  
 FOR PUBLIC STREET PURPOSES  
 AT THE INTERSECTION  
 OF THE WESTERLY LINE OF  
**BELLEVUE AVENUE**  
 WITH THE SOUTHEASTERLY LINE OF  
**BOYLSTON STREET**  
 IN THE CITY OF LOS ANGELES CALIF.  
 IN ACCORDANCE WITH ORDINANCE NO. 64112  
 JOHN C. SHAW CITY ENGINEER JULY 1929  
 SCALE  
 1 INCH = 50 FEET

Note. Sht. 2  
Land to be condemned shown colored red.

Superior Court Case No. 287270  
 Suit for Condemnation  
 Filed Sept. 6th 1929  
 City of Los Angeles, Plaintiff  
 Vs.  
 McAlister Co. et al., Defendants.  
 Interlocutory judgment as per  
 map, rendered Sept. 2nd 1930.  
 Judg. Bk. 760-357.  
 Final judgment in favor of Plt'ff. as  
 per map, rendered Oct. 6th., 1930.

D:79-269, O:R.10283-354.

A-5622

