

VF-21C

VF-21C

SEVENTH STREET

STREET

STREET

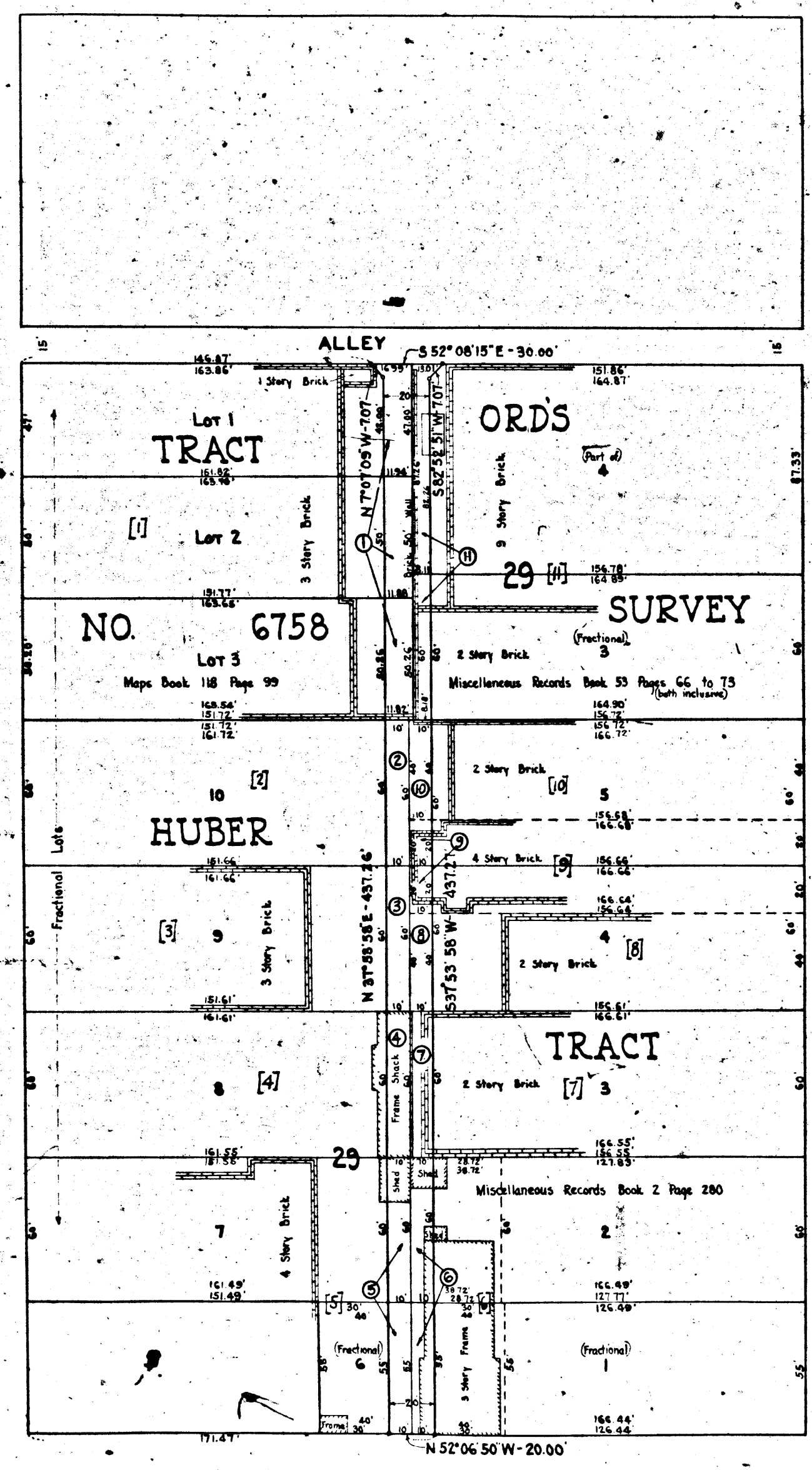
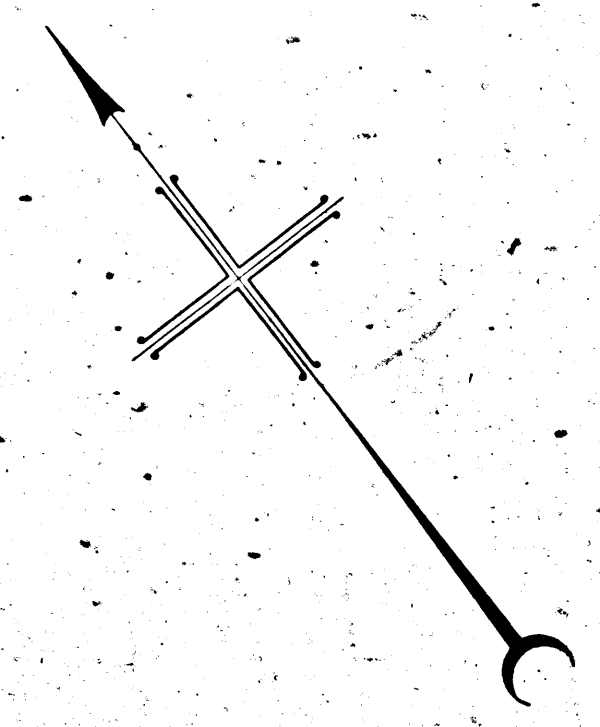
FLOWER STREET

HOPE STREET

EIGHTH STREET

VF-21A

VF-21A



MAP
 SHOWING THE LAND TO BE CONDEMNED
 FOR THE
 LAYING OUT AND OPENING
 OF
AN ALLEY
 FROM THE
**FIRST ALLEY SOUTHWESTERLY OF
 SEVENTH STREET**
 TO
EIGHTH STREET
 ALONG A LINE APPROXIMATELY MIDWAY
 BETWEEN HOPE STREET AND FLOWER STREET
 IN THE CITY OF LOS ANGELES, CALIF.
 IN ACCORDANCE WITH ORDINANCES NOS. 62084 AND 63500
JOHN C. SHAW - CITY ENGINEER
 SCALE - 1 INCH = 40 FEET. MAY, 1929

NOTES:
 LAND TO BE CONDEMNED SHOWN COLORED RED.
 DOTTED LINES AND DIMENSIONS SHOW PROPERTY HOLDINGS
 IN CASES WHERE THEY DIFFER FROM RECORDED SUBDIVISIONS.
 FIGURES IN CIRCLES INDICATE THE PARCEL NUMBERS
 AS SET FORTH IN PARAGRAPH VIII OF THE COMPLAINT.
 THE BEARING S 52° 06' 15" E OF THE SOUTHWESTERLY LINE OF THE
 ALLEY AS SHOWN ON MAP OF TRACT NO. 6758 RECORDED IN BOOK
 118 PAGE 99 OF MAPS RECORDS OF LOS ANGELES COUNTY WAS
 TAKEN AS THE BASIS OF BEARINGS SHOWN ON THIS MAP.
 FIGURES IN BRACKETS INDICATE THE LARGER PARCELS AS SET
 FORTH IN PARAGRAPH VIII OF THE COMPLAINT.

Sheet 3
Superior Court Case No. 2888-19
Suit for Condemnation
Filed Oct. 4th 1929
City of Los Angeles, Plaintiff
vs
Henry Jacoby et al, Defendants.
Interlocutory judgment as
per map, rendered July 29th 1929
3d. State Ex. 740-23
Final judgment in favor of Plff as
per map, rendered April 5th 1932

CITY OF LOS ANGELES PROPERTY