

MAP
SHOWING THE LAND
TO BE CONDEMNED
FOR THE
OPENING OF
A NEW STREET
TO BE KNOWN AS
GILLIG PLACE
SITUATED BETWEEN
SIERRA STREET
AND

LINCOLN PARK AVENUE
AND EXTENDING FROM
GILLIG AVENUE
TO A POINT APPROXIMATELY
FIFTY (50) FEET SOUTHERLY OF
GILLIG AVENUE
IN THE CITY OF LOS ANGELES CALIF.
IN ACCORDANCE WITH ORDINANCE NO. 64929
JOHN C. SHAW CITY ENGINEER OCTOBER 1929
SCALE 1 INCH = 100 FEET

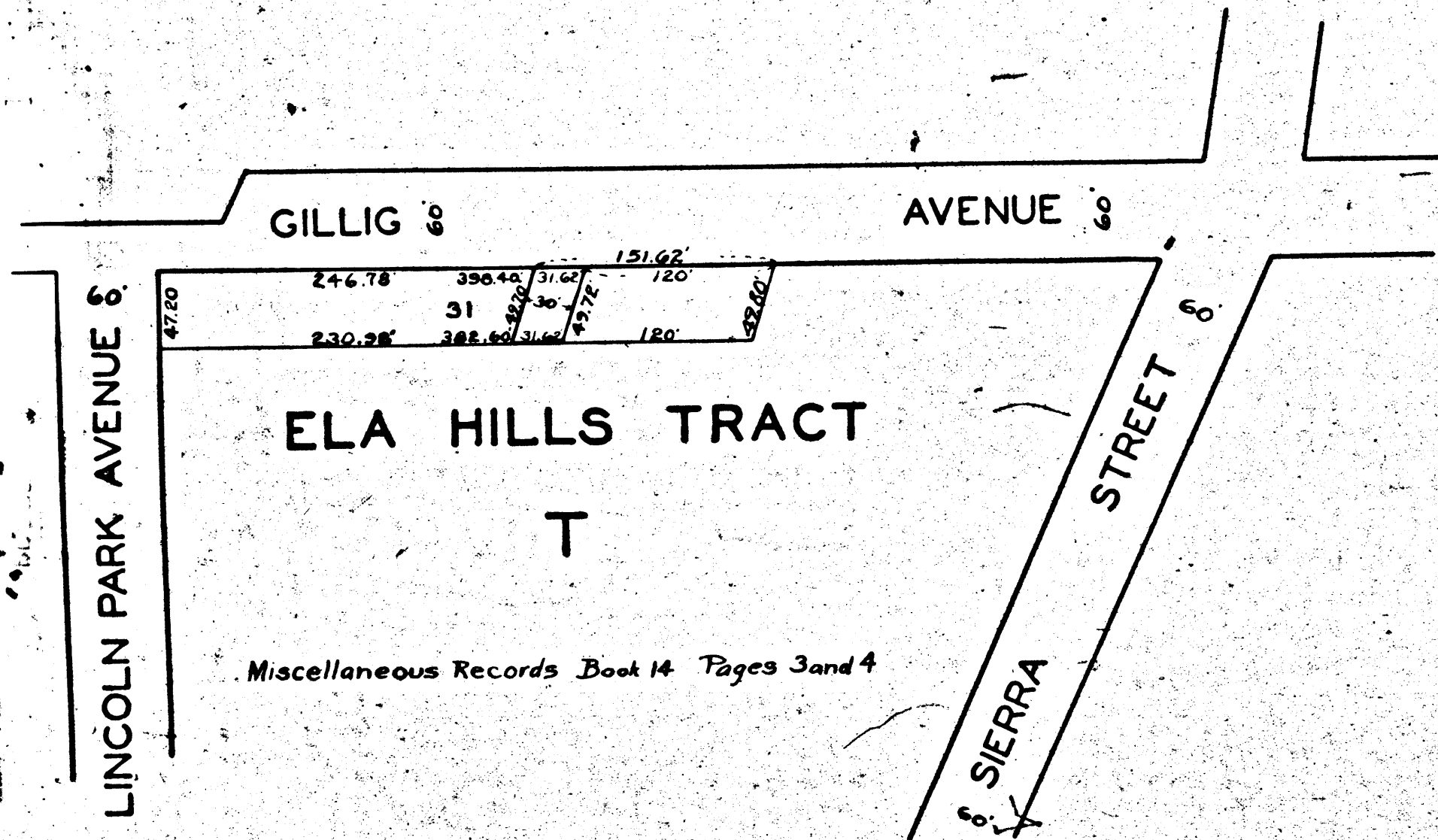
Land to be condemned shown colored red.
Sht. 1

Superior Court Case No. 290076
Suit for Condemnation
Filed Oct. 24th 1929
City of Los Angeles, Plaintiff
vs
T. A. Davis et al., Defendants.

Final judgment in favor of Plt'ff. as
per map, rendered June 16th., 1931.

D: 84-181, O.R. 10956-153

A-5701



ELA HILLS TRACT

Miscellaneous Records Book 14 Pages 3 and 4

Index #8

1052-A

1052-A

PROPERTY OF THE CITY OF LOS ANGELES

A-2501

A-2501

