

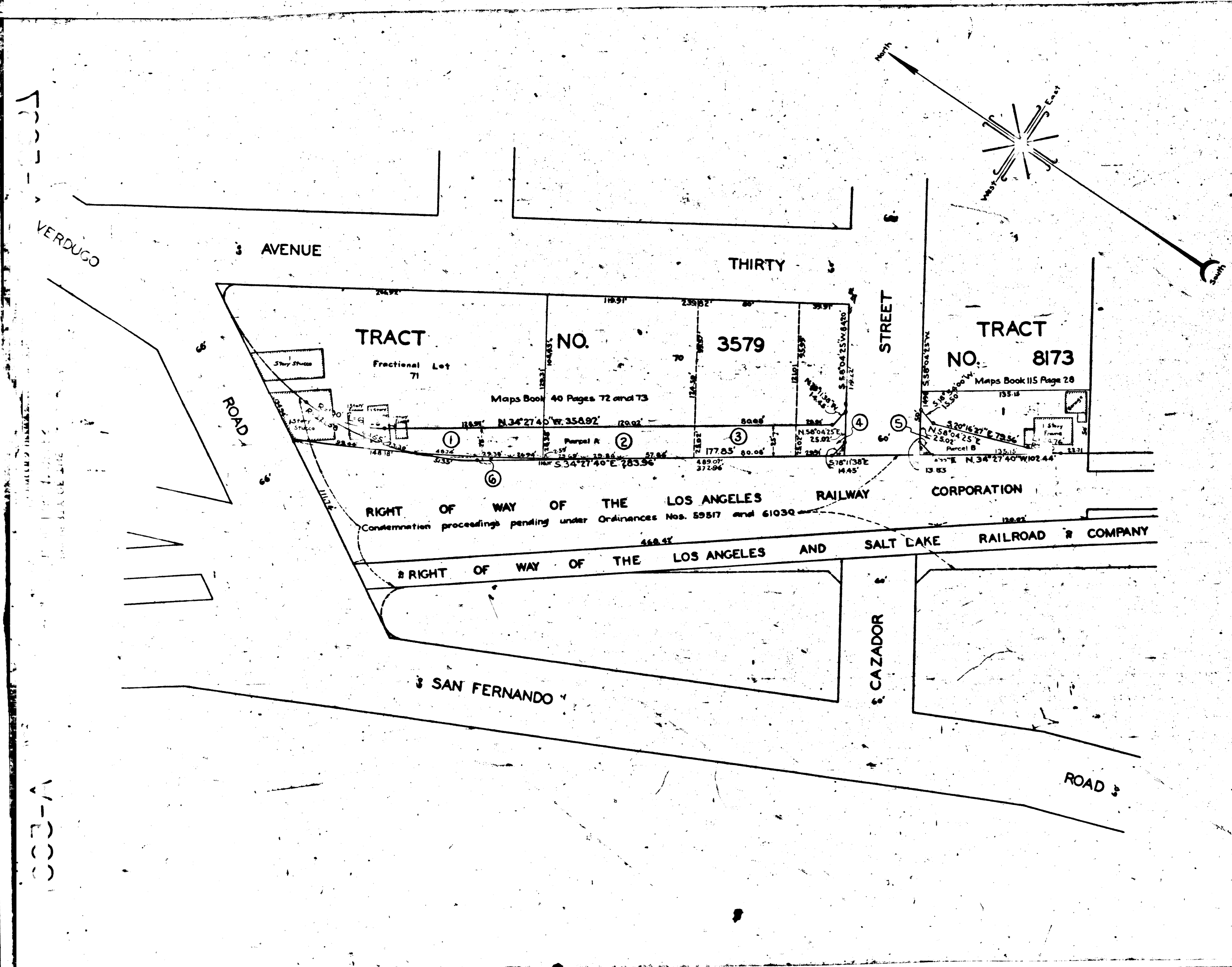
O. & W. CYPRESS AVE. (N/S) CAZADOR ST. TO VERDUGO ROAD
FILE NO. 2711-25 CHARGE NO. 6713

MAP
SHOWING THE LAND TO BE CONDEMNED FOR
PUBLIC STREET PURPOSES
SITUATED NORTHEASTERLY OF AND CONTIGUOUS TO
CYPRESS AVENUE
AS PROPOSED TO BE LAID OUT AND OPENED
UNDER ORDINANCES NOS. 59517 AND 61030
OF THE CITY OF LOS ANGELES
AND LYING BETWEEN
VERDUGO ROAD
AND
A POINT APPROXIMATELY 115 FEET SOUTHEASTERLY OF
CAZADOR STREET
IN THE CITY OF LOS ANGELES CAL.
IN ACCORDANCE WITH ORDINANCE
JOHN C. SHAW CITY ENGINEER AUG 1929
SCALE 1 INCH = 50 FEET

NOTES: Land to be condemned shown colored red.
Dotted lines and dimensions show property holdings in those
cases where they differ from the recorded subdivisions.
Figures in circles indicate parcel numbers as set forth in
paragraph III of the complaint.

Superior Court Case No. 290908
Suit for Condemnation
Filed Nov. 7th 1929
City of Los Angeles, Pltff.
vs
W.F. J... et al, Defendants.

A-5037



FILED IN THE OFFICE OF THE CITY ENGINEER
AUG 19 1929