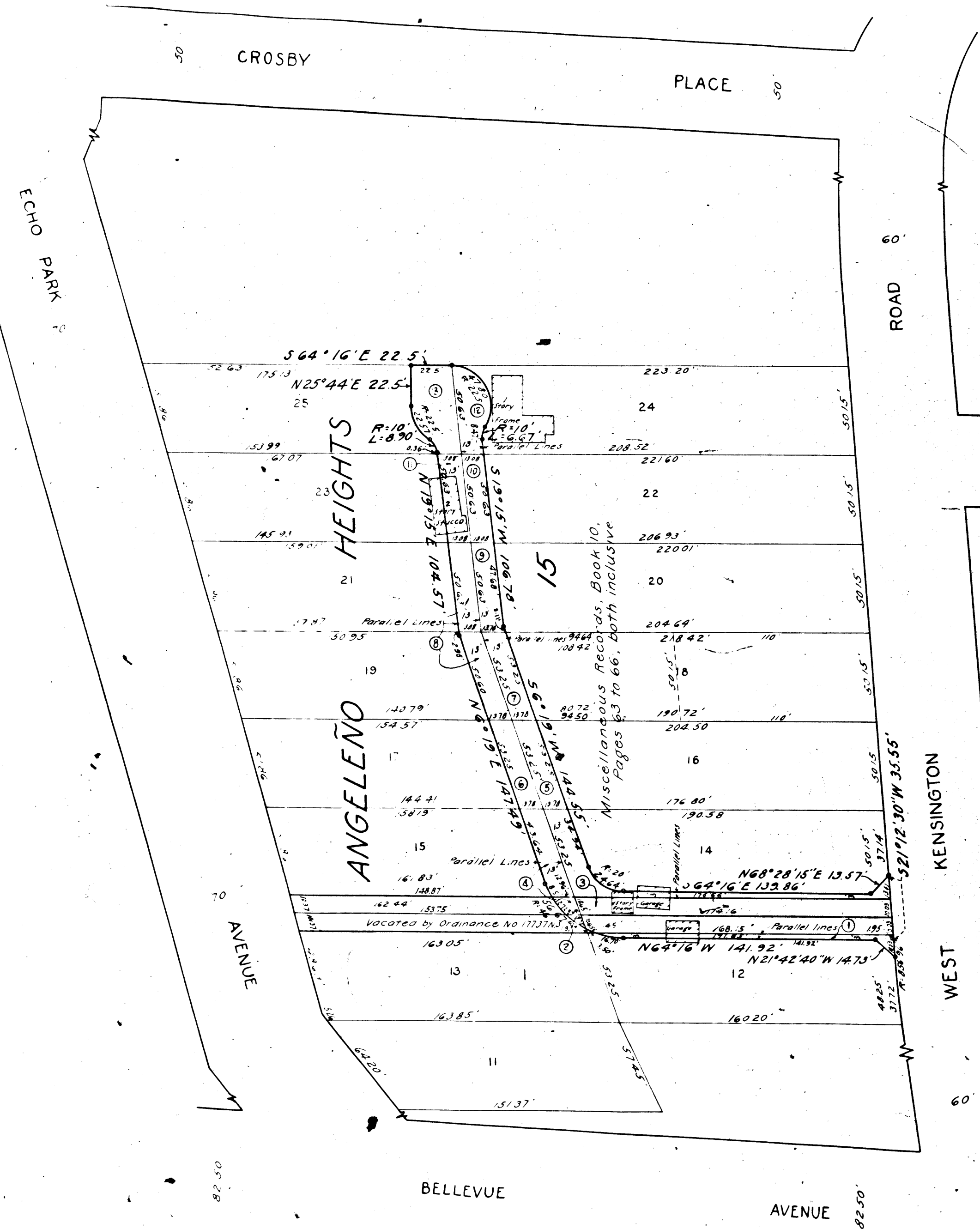


**MAP**  
 SHOWING THE LAND TO BE CONDEMNED  
 FOR THE OPENING OF A NEW STREET  
 TO BE KNOWN AS  
**ECHO PARK TERRACE**  
 BETWEEN  
**CROSBY PLACE AND BELLEVUE AVENUE**  
 AND BETWEEN  
**WEST KENSINGTON ROAD AND ECHO PARK AVENUE**  
 IN THE  
 CITY OF LOS ANGELES CALIFORNIA  
 IN ACCORDANCE WITH ORDINANCES NOS. 62954 AND 65009  
 JOHN C SHAW CITY ENGINEER OCTOBER 1929  
 SCALE 1 INCH = 40 FEET  
 Sheet

Superior Court Case No. 292540  
 Suit for Condemnation  
 Filed Dec. 4<sup>th</sup> 1929  
 City of Los Angeles, Plff.  
 Vs  
 John O. B. Bodkin et al, Def.  
 Interlocutory judgment as per  
 map, rendered June 23<sup>rd</sup> 1930.  
 Judg. 5k. 743 378.  
 Final judgment in favor of Plff.  
 as per map rendered Aug. 7<sup>th</sup> 1931  
 D: 84-244, O.R. 11032, 321.



NOTES:  
 Land to be condemned shown colored red.  
 Dotted lines and dimensions show property holdings in those cases  
 where they differ from recorded subdivisions.  
 Figures in circles indicate parcel numbers as set forth in  
 paragraph IX of the complaint.  
 The bearing  $S64^{\circ}16'E$  of the southwesterly line of Lot 14, Block 15,  
 Angeleño Heights, recorded in book 10, pages 63 to 66, both  
 inclusive, Miscellaneous Records of Los Angeles County, was  
 taken as the basis of bearings shown upon this map.



A-5709