

Superior Court Case No. 293450
 Suit for Condemnation
 Filed Dec. 19th 1929
 County of Los Angeles, Plff.
 Vs
 Maude Geradine, Addie et al., Def.
 Proceedings abandoned Oct. 13, 1931.

PART II
 ACQUISITION & IMPROVEMENT DISTRICT NO. III
 OF THE COUNTY OF LOS ANGELES
 —FOR—
 THE OPENING, WIDENING AND EXTENDING
 OF
ATLANTIC AVENUE
 ET AL

Map showing property to be acquired in accordance with the provisions of the "Acquisition and Improvement Act of 1925," approved May 23rd 1925, and as amended.

NOVEMBER 1929

J. E. ROCKHOLD, COUNTY SURVEYOR

LEGEND:

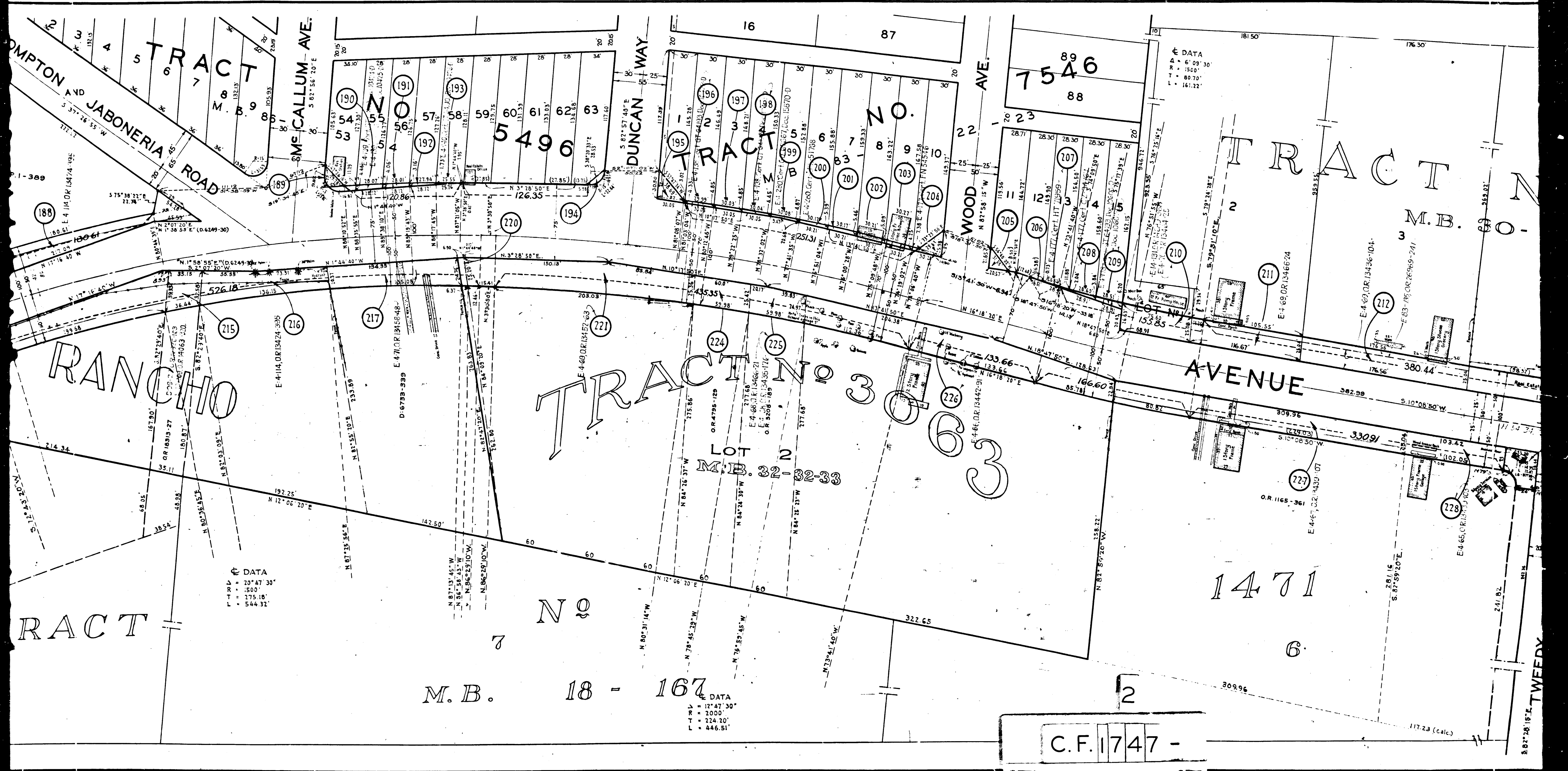
PORTION COLORED RED SHOWS LOCATION, GENERAL ROUTE AND TERMINI OF LAND IN WHICH AN EASEMENT FOR PUBLIC HIGHWAY PURPOSES IS SOUGHT TO BE ACQUIRED.
 NUMBERS IN CIRCLES INDICATE PARCELS SOUGHT TO BE CONDEMNED.
 FIGURES SHOWN IN PARENTHESES () ARE EITHER RECORD DISTANCES OR CALCULATED FROM RECORD DISTANCES.

Sh. 32
 Sh. 35

C.F. 1747 -

SHEET 4 OF 4 SHEETS		
A. & I. DISTRICT NO. III		
DRAWN BY	E. H. A.	MAY 1928
TRACED BY	G. R. & T. H.	
CHECKED BY	J. E. M. & D. C.	JUNE

Negative of this map filed in Blue Print
 No. 1747-4 SHEETS



DATA
 Δ = 6' 09" 30"
 R = 1500'
 T = 80.70'
 L = 161.22'

DATA
 Δ = 20° 47' 30"
 R = 1500'
 T = 275.16'
 L = 544.31'

DATA
 Δ = 12° 47' 30"
 R = 2000'
 T = 224.20'
 L = 446.51'

C.F. 1747 -

M.B. 18 - 167

1471
 6

TRACT NO. 3
 LOT M.B. 32-33
 663

RANCHO

AVENUE

TRACT

M.B. 30

TRACT

TRACT NO.

WOOD AVE.

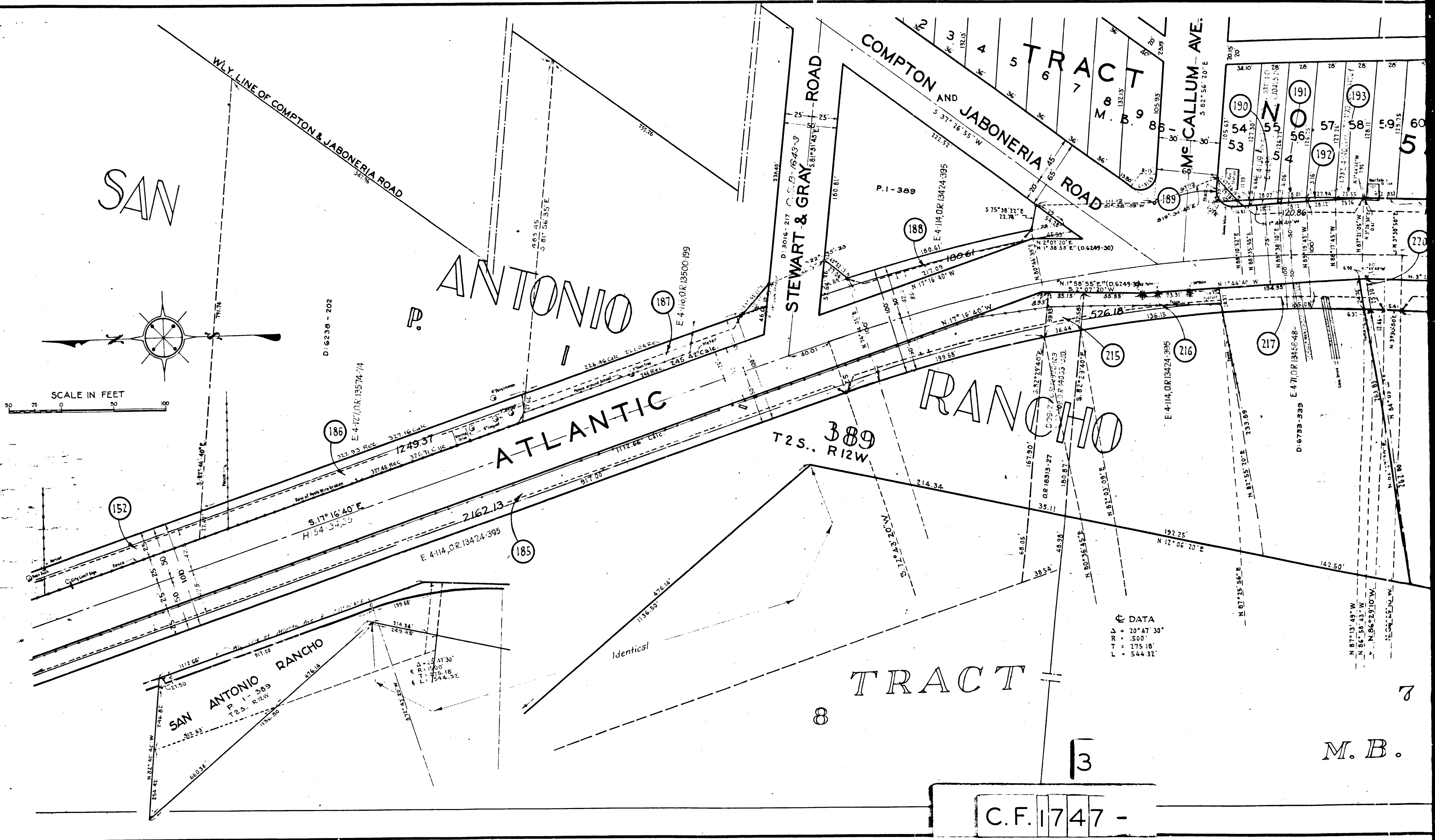
DUNCAN WAY

SIMS CALLUM AVE.

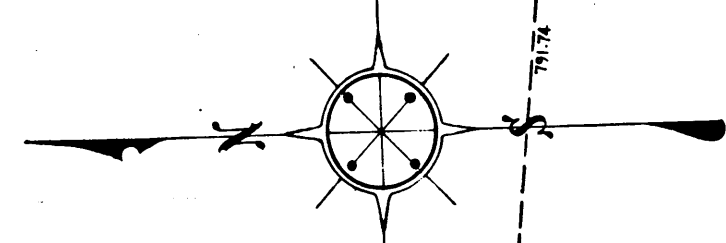
JABONERIA ROAD

TWEEDY

See Sheet No. 3



SCALE IN FEET

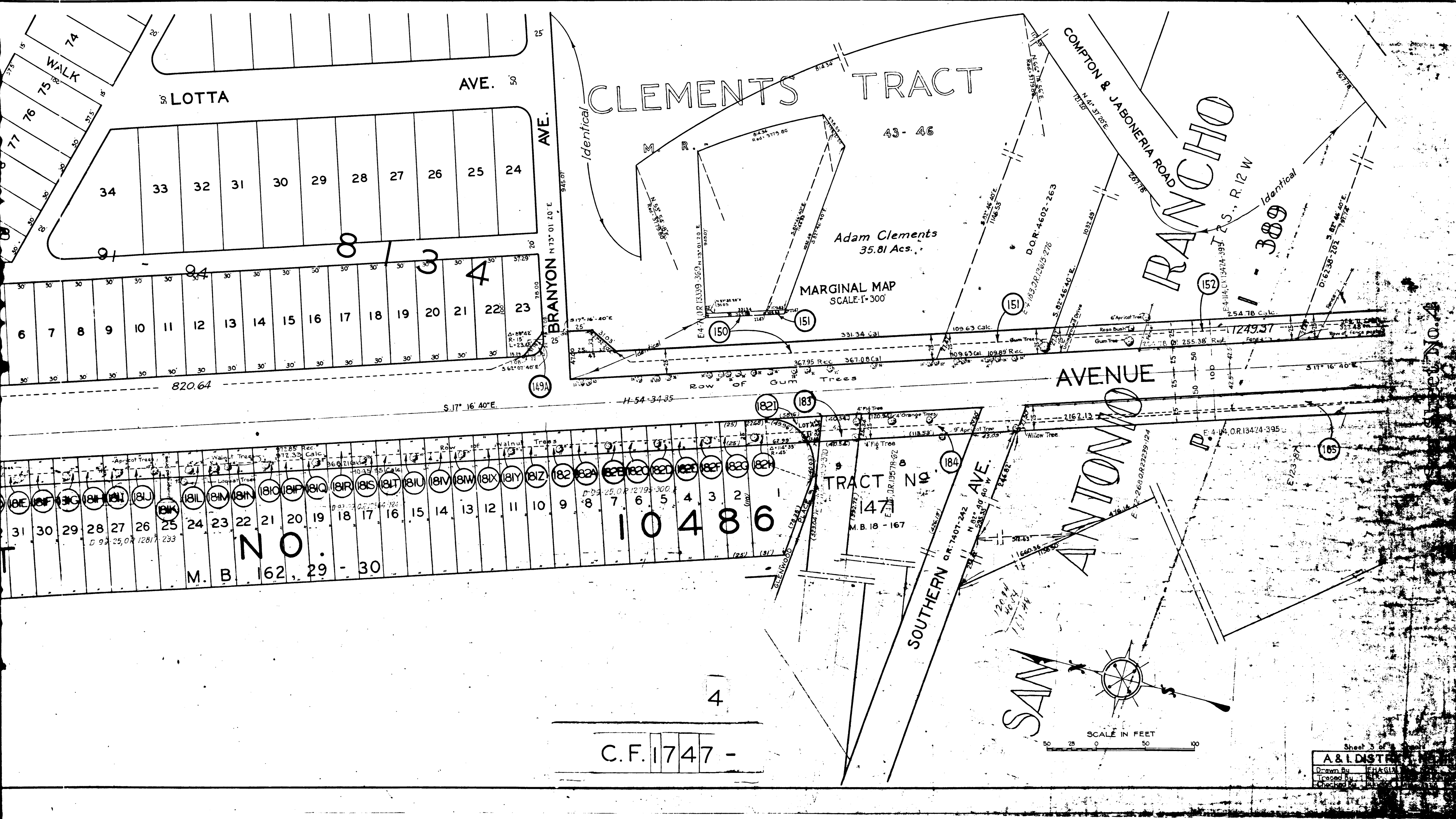


DATA

D	= 20° 47' 30"
R	= 500'
T	= 275' 16"
L	= 544' 32"

C.F. 1747 -

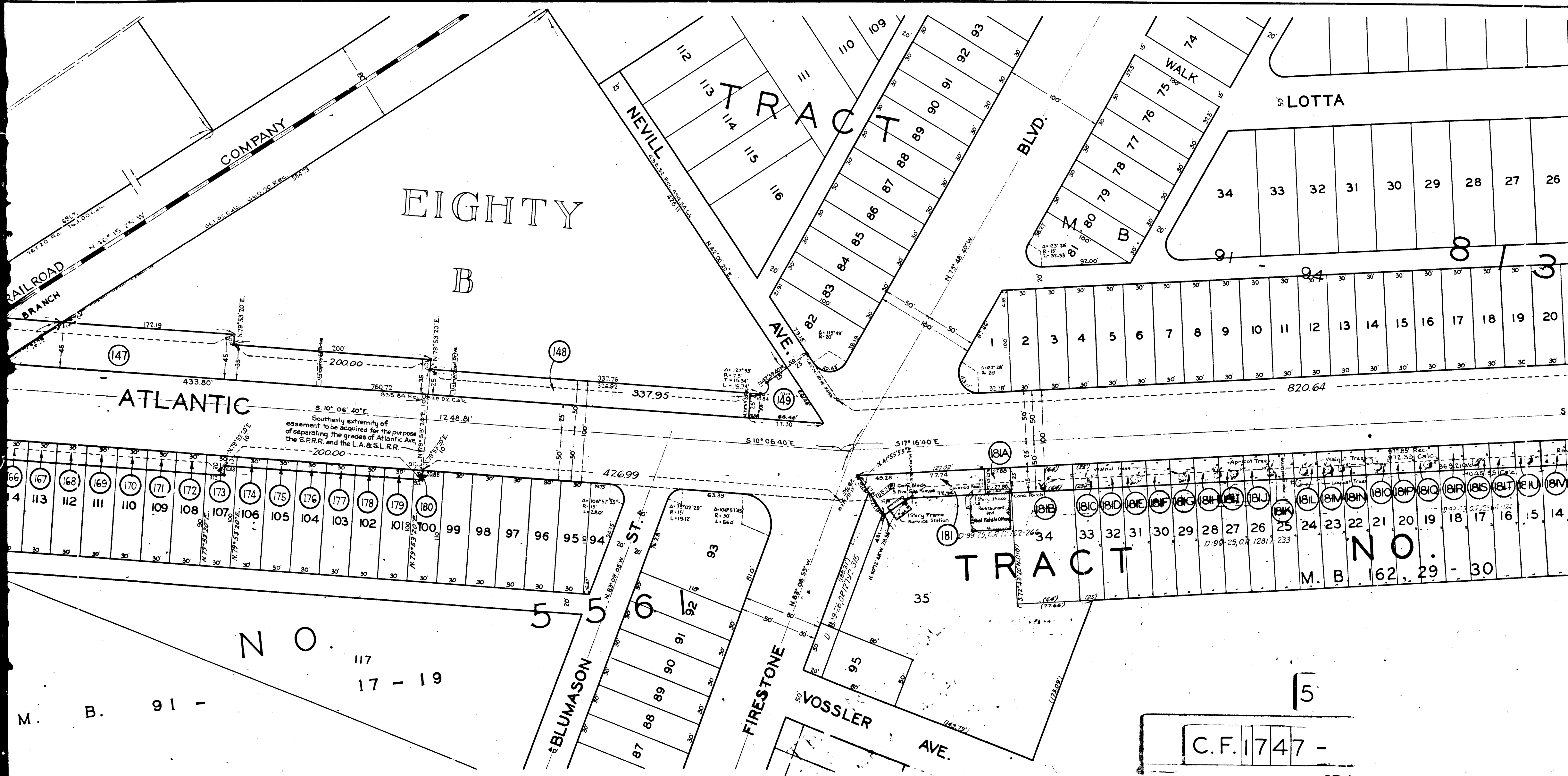
M. B.



C.F. 1747 -

Sheet 3 of 4
A & L DISTRICT
 Drawn By: [Signature]
 Traced By: [Signature]
 Checked By: [Signature]

See Sheet No. 3



EIGHTY

B

TRACT

LOTTA

ATLANTIC

TRACT

NO.

NO.

117
17 - 19

BLUMASON

FIRESTONE

VOSSLER

AVE.

COMPANY

RAILROAD
BRANCH

BLVD.

WALK

(147)

(148)

(149)

(181A)

(181B)

(181C)

(181D)

(181E)

(181F)

(181G)

(181H)

(181I)

(181J)

(181K)

(181L)

(181M)

M. B. 162, 29 - 30

C.F. 1747 -

5

M. B. 91 -

ONE

HUNDRED

AND

E

M. B.
246

13 - 198

ATLANTIC

NO.

194 - 195

349

PATATA
Boundary Line City of

PACIFIC

TRACT

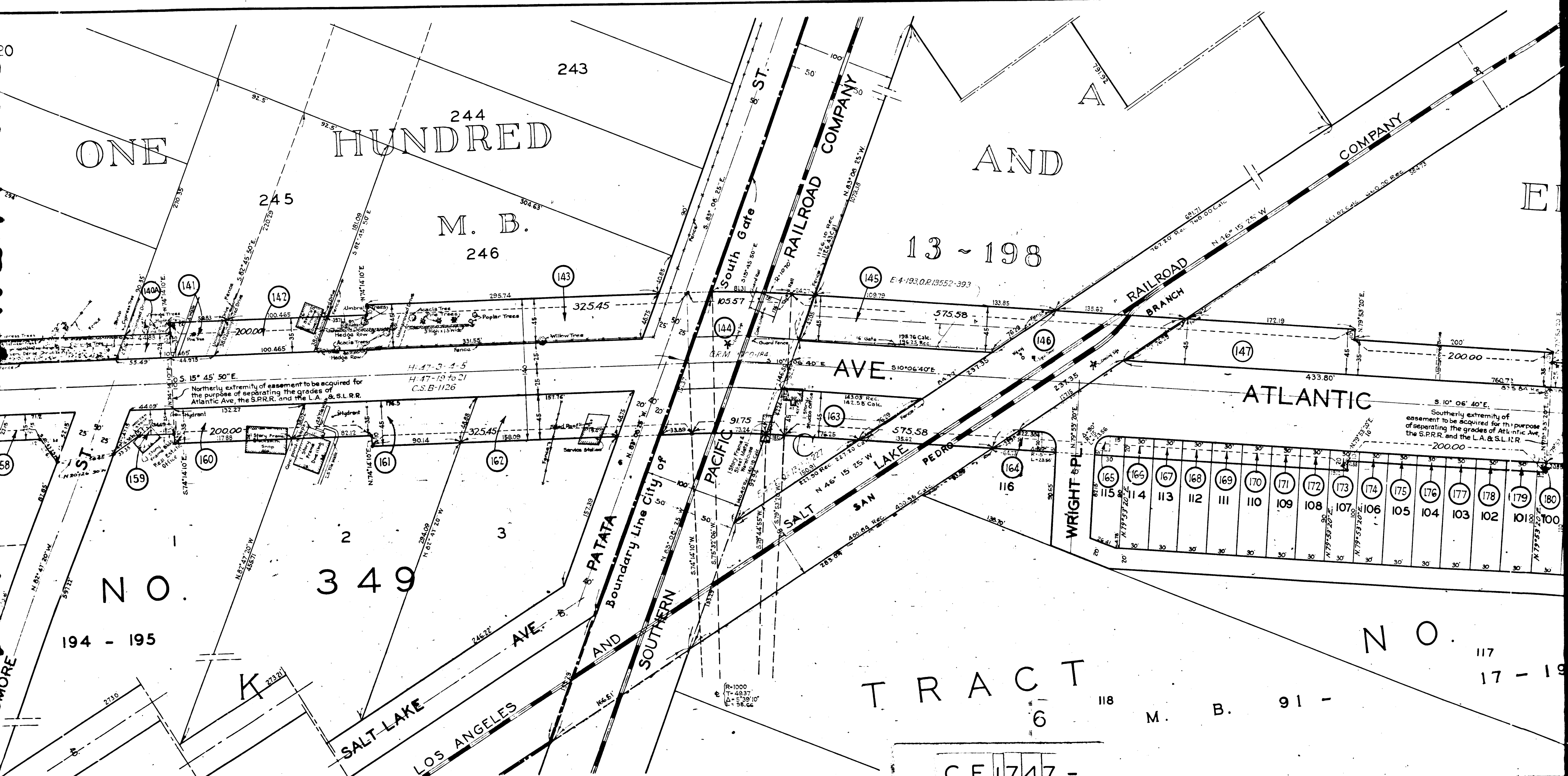
6

M. B. 91 -

NO.

117
17 - 19

C.F. 1747 -



20

243

245

140

141

142

143

145

144

146

147

58

159

160

161

162

163

164

165

166

167

168

169

170

171

172

173

59

60

61

62

63

64

65

66

67

68

69

70

71

72

73

74

75

76

77

78

79

80

81

82

83

84

57

58

59

60

61

62

63

64

65

66

67

68

69

70

71

72

73

74

75

76

77

78

79

80

81

82

56

57

58

59

60

61

62

63

64

65

66

67

68

69

70

71

72

73

74

75

76

77

78

79

80

81

See Sheet No. 3

See Sheet No. 2

A & I DISTRICT No. 11

Drawn by	E. Johnson	Apr. 1928
Traced by	E. Johnson	Apr. 1928
Checked by	K. C. Co.	Apr. 1928

SCALE IN FEET

0 50 100

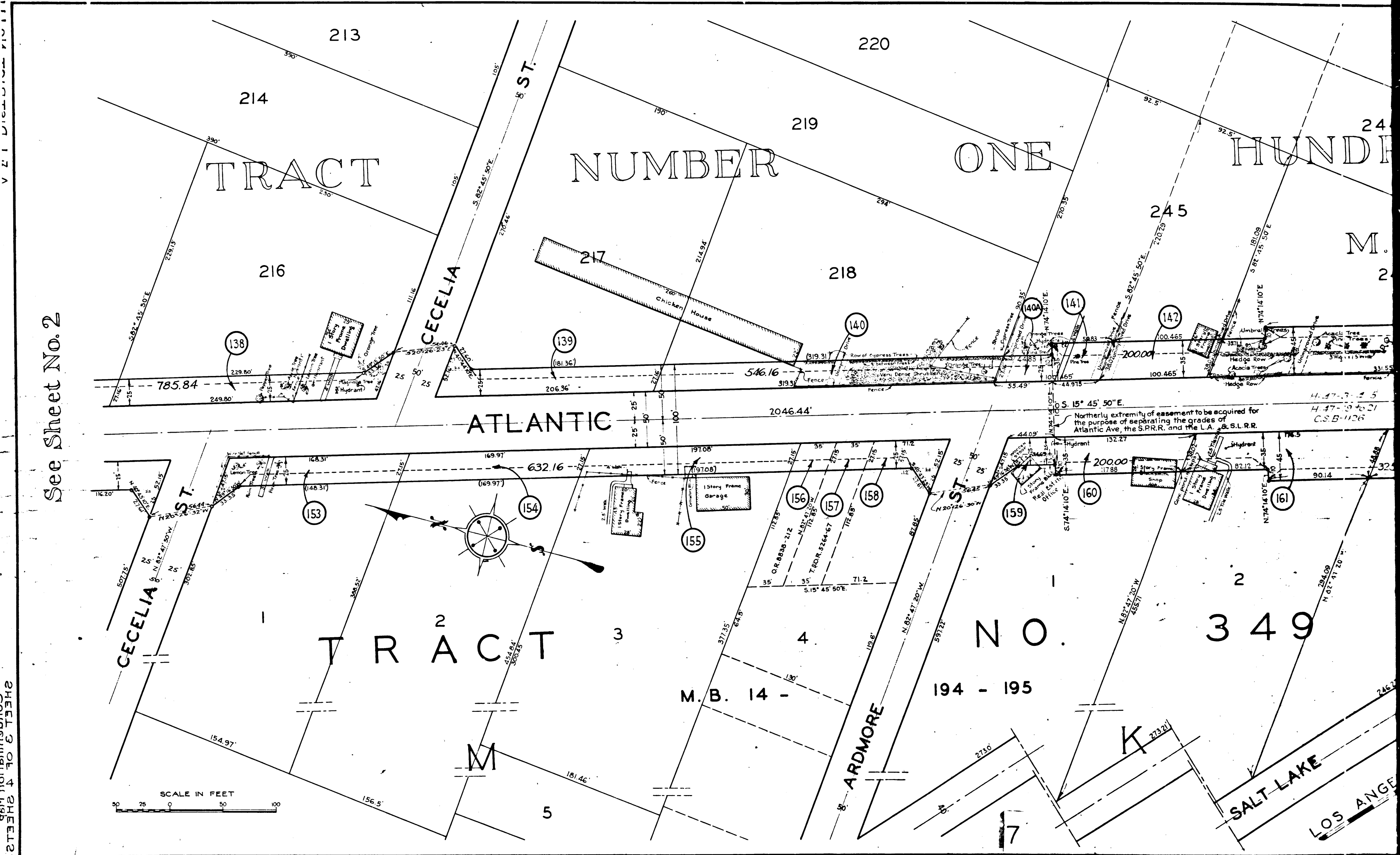
SCALE IN FEET

0 50 100

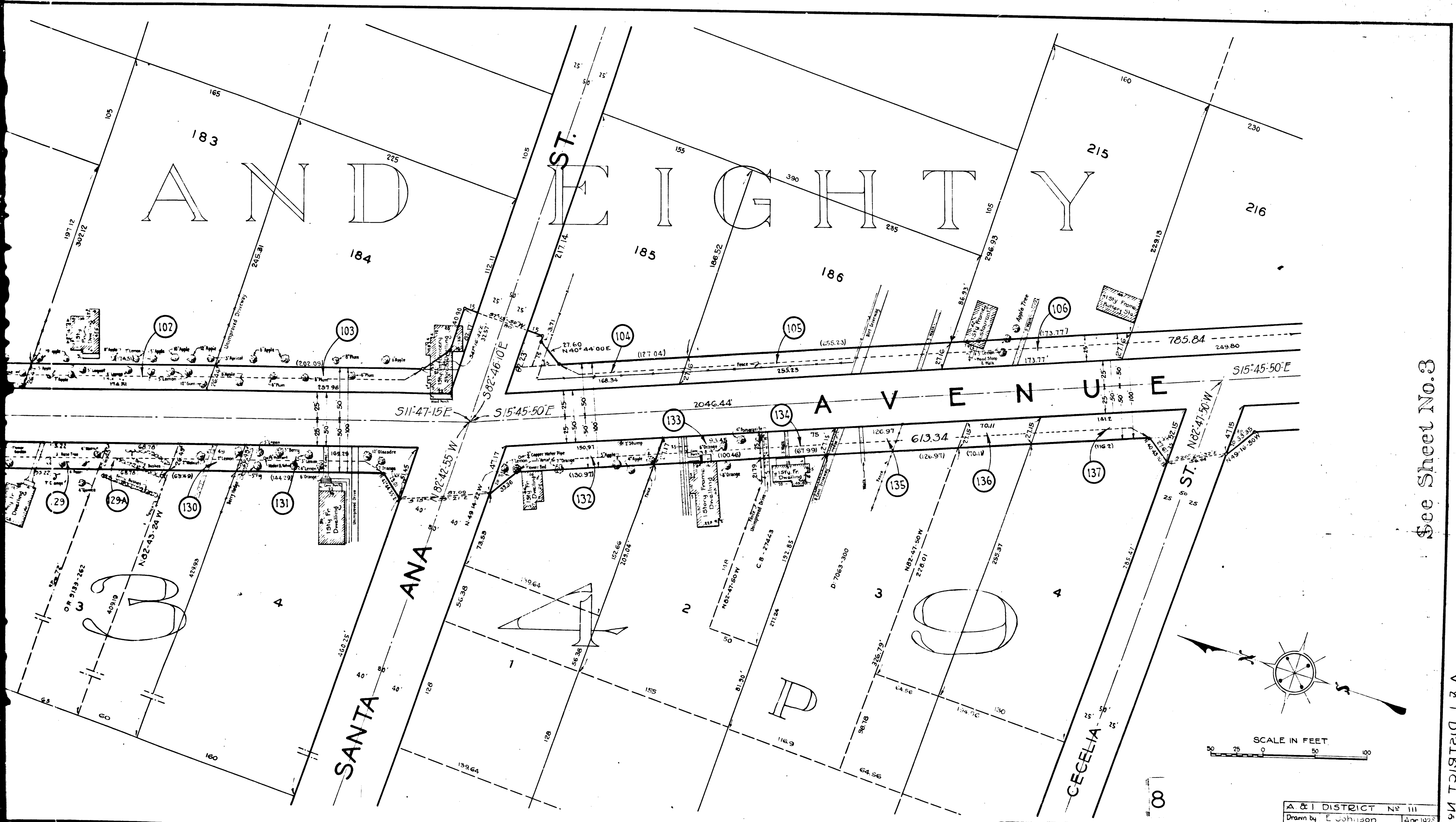
SHEET 3 OF 4 SHEETS

CONDOMINIUM MAP

A & I DISTRICT No. 11



C.F. 1747 -



See Sheet No. 3

See Sheet No. 2

A & I DISTRICT No. 111

C.F. 1747 -

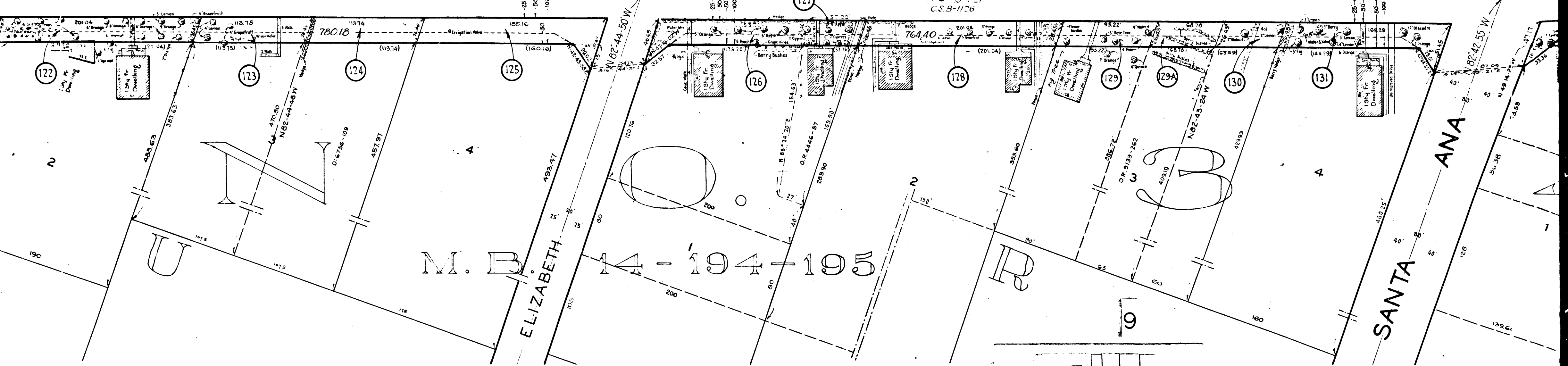
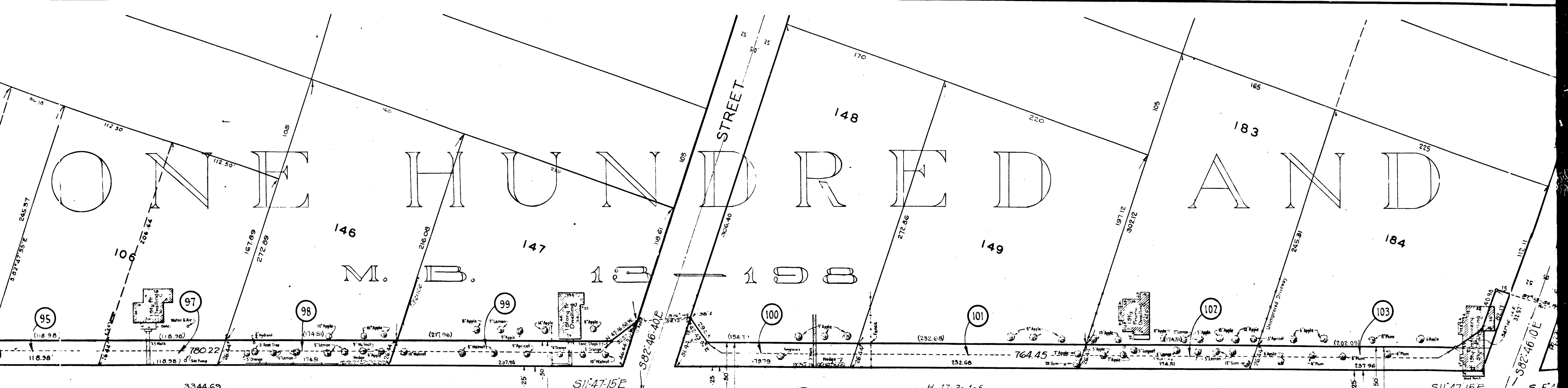
A & I DISTRICT No. 111	
Drawn by E. Johnson	Apr. 1928
Traced by E. Johnson	Apr. 1928
Checked by K. A. Cook	May 1928

SHEET 3 OF 3 SHEETS
Commissioners Map

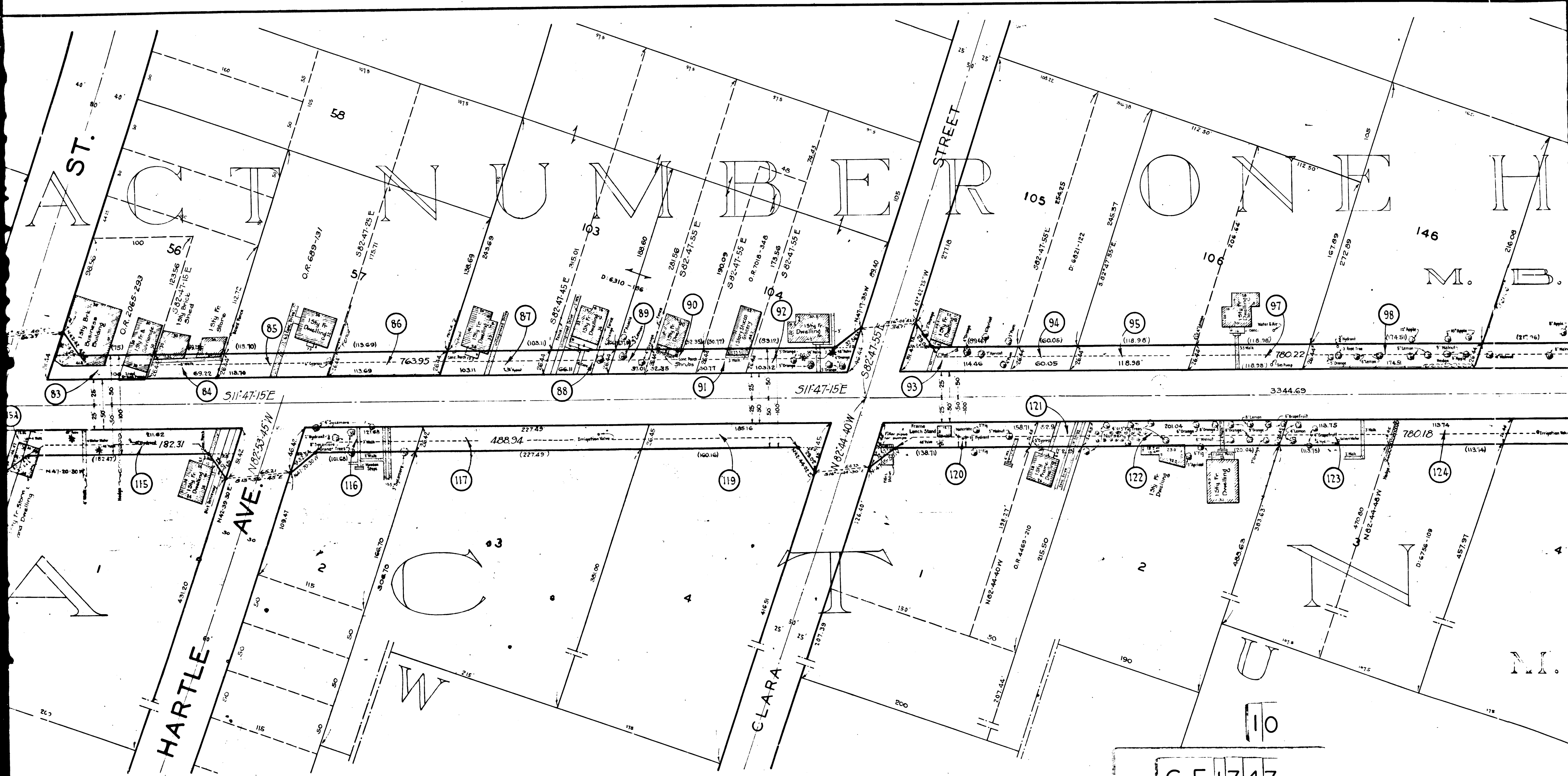
V E I DISTRICT No. 111

ONE HUNDRED AND

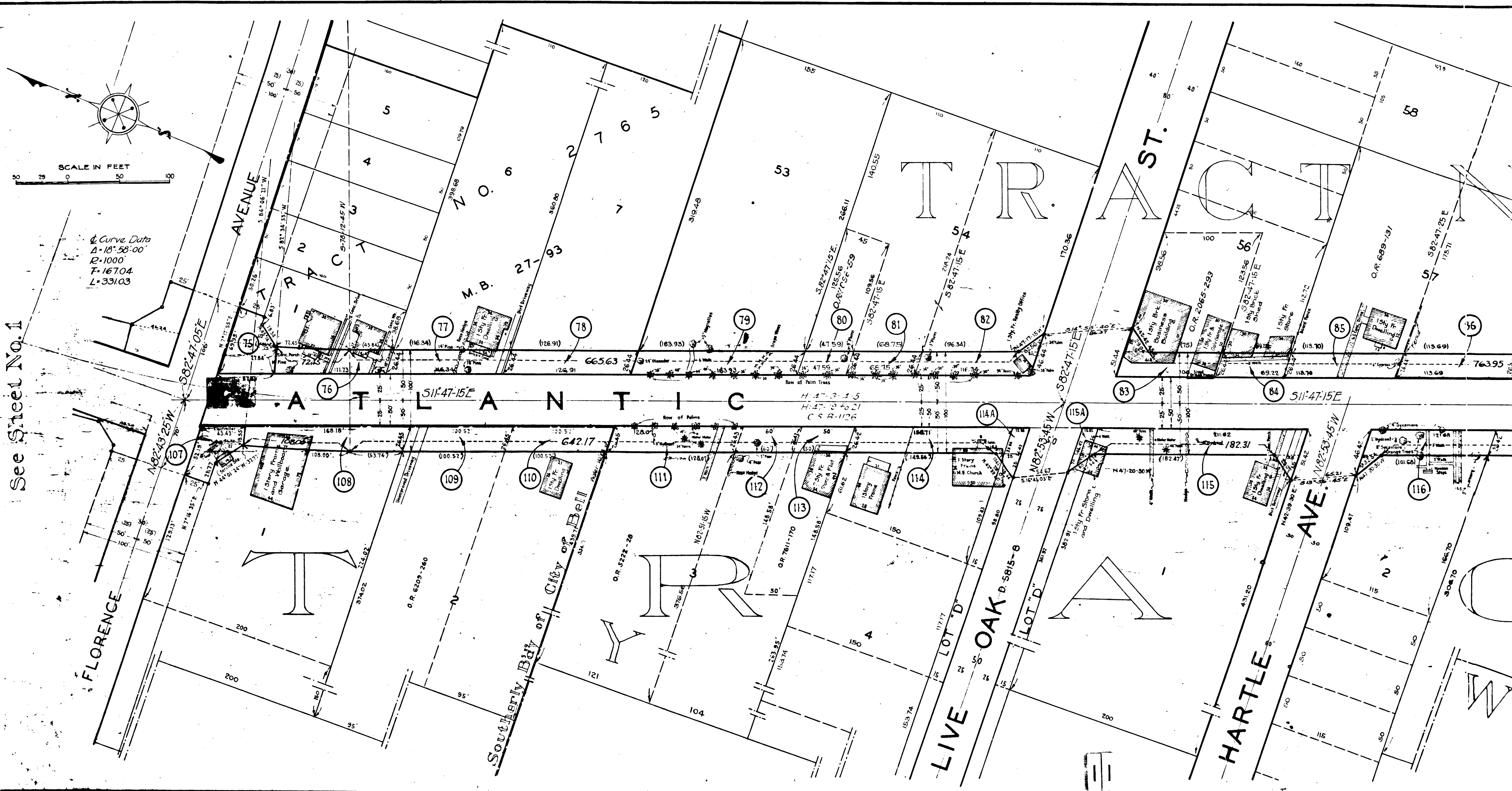
146 147 148 149 183 184
M. B. 18 - 198



C.F. 1747 -



C.F. 1747 -



See Sheet No. 1

Curve Data
 $\Delta = 18^\circ 58' 00"$
 $R = 1000'$
 $T = 167.04'$
 $L = 331.03'$

C.F. 1747 -

SAN

ANTONIO

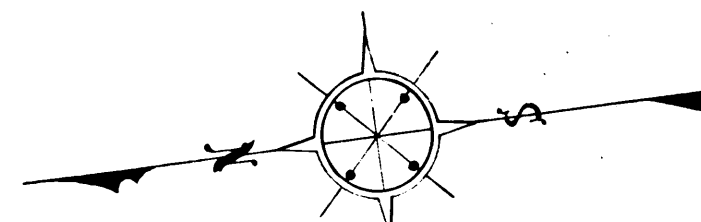
RANCHO

PARCEL 2
D:7153-39

PI - 389

L.S. 6-38

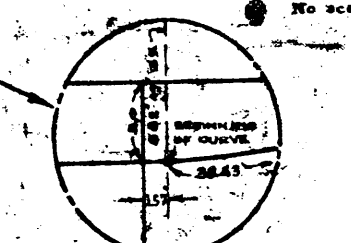
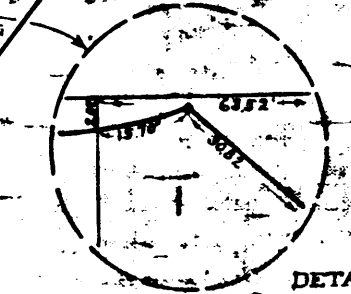
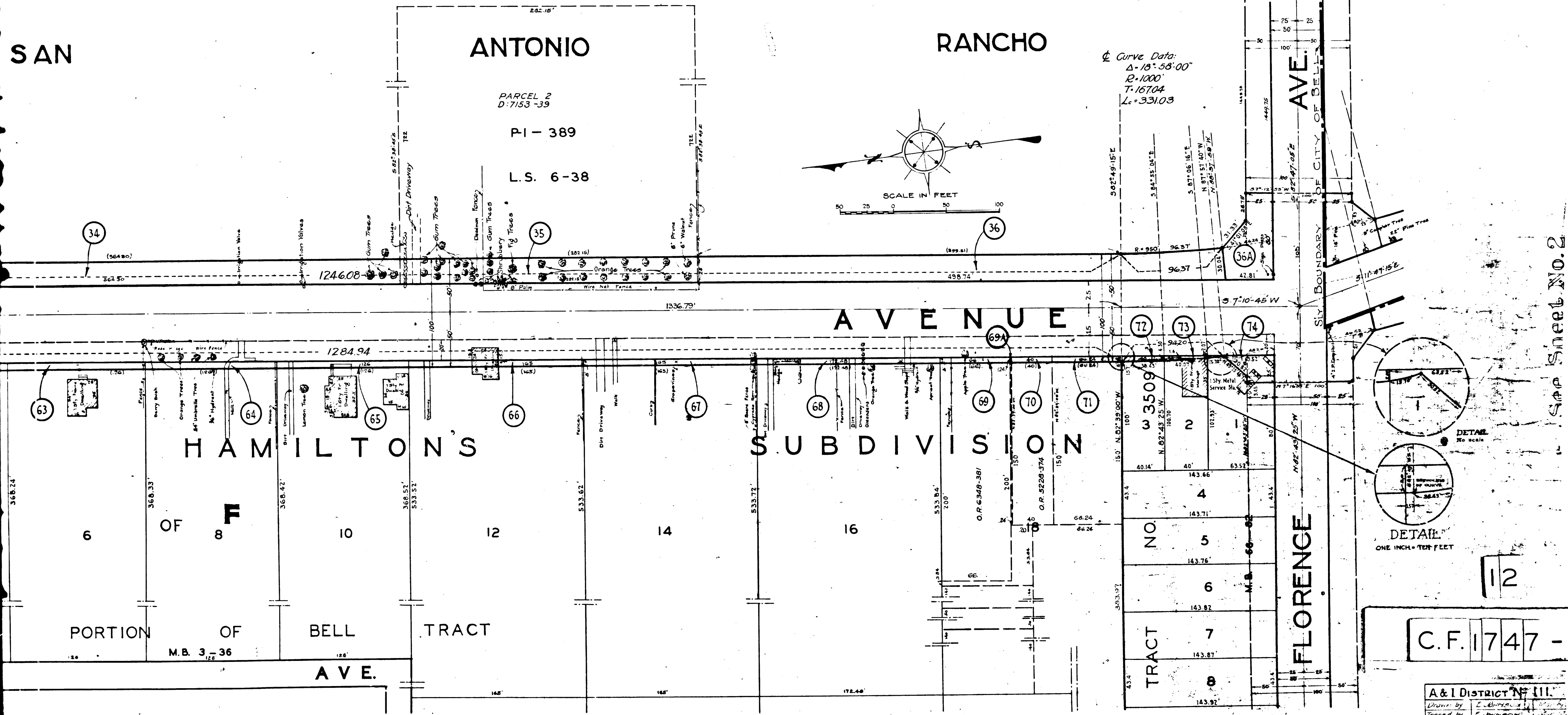
Curve Data:
 $\Delta = 18^{\circ} 58' 00''$
 $R = 1000'$
 $T = 167.04'$
 $Lc = 331.03'$



SCALE IN FEET

AVE.

CITY BOUNDARY OF CITY OF BELL



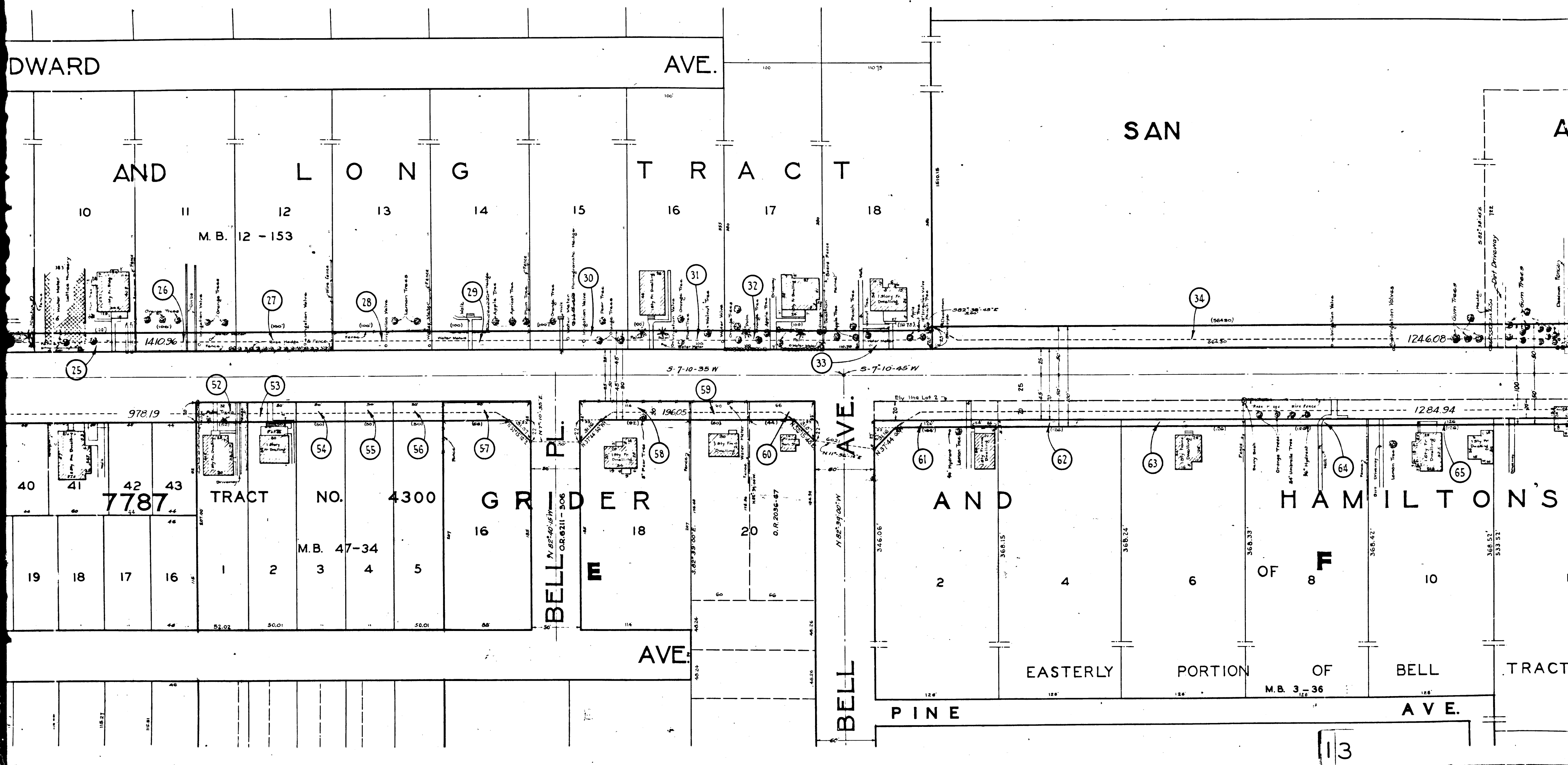
DETAIL
ONE INCH = TEN FEET

12

C.F. 1747 -

A & I DISTRICT NO. III.
Drawn by E. Brennan
Traced by F. Johnson
Checked by C. S. ...

S&P SHEET NO. 2



13

C.F. 1747 -

AVE.

AVE.

WOODWARD

NO.

511

512

2

4

8

7

TRACT

M.B. 39-13

NO. 3628

M.B. 31-71

10

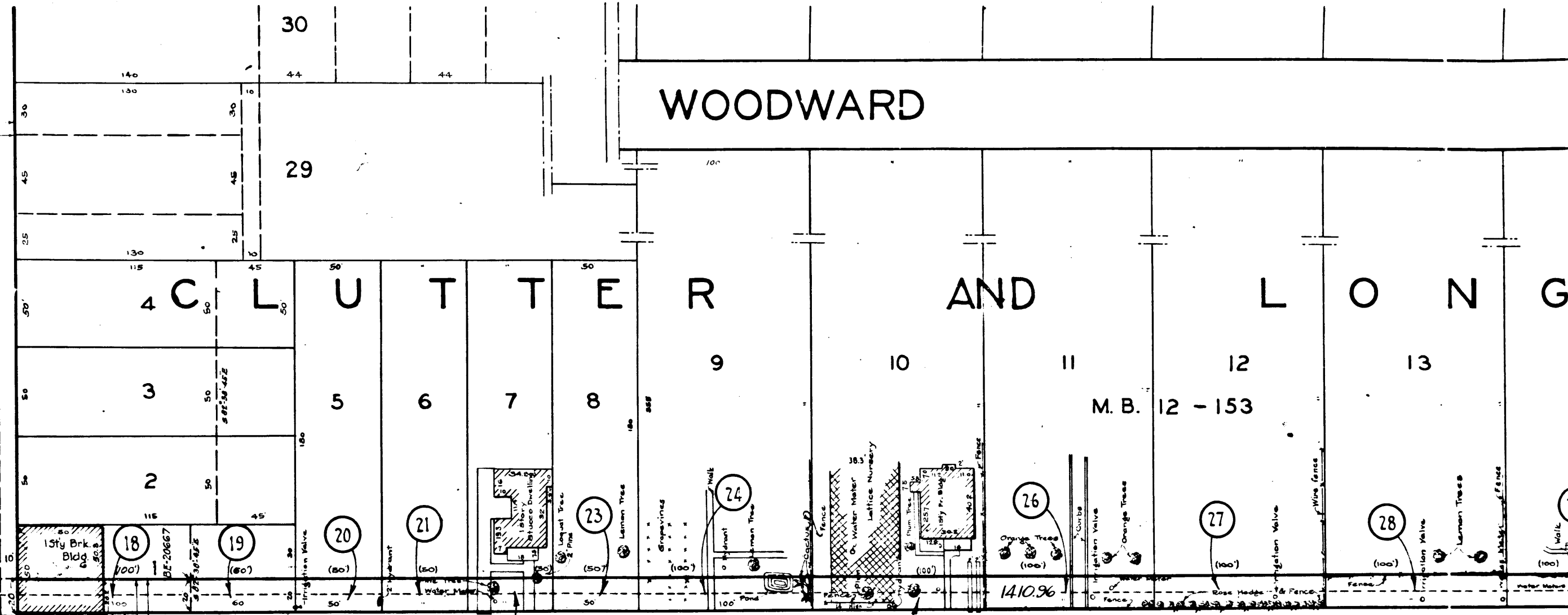
11

12

14

15

17



NO.

5

6

7

8

2

4

2

0

NO.

M.B. 23-57

2

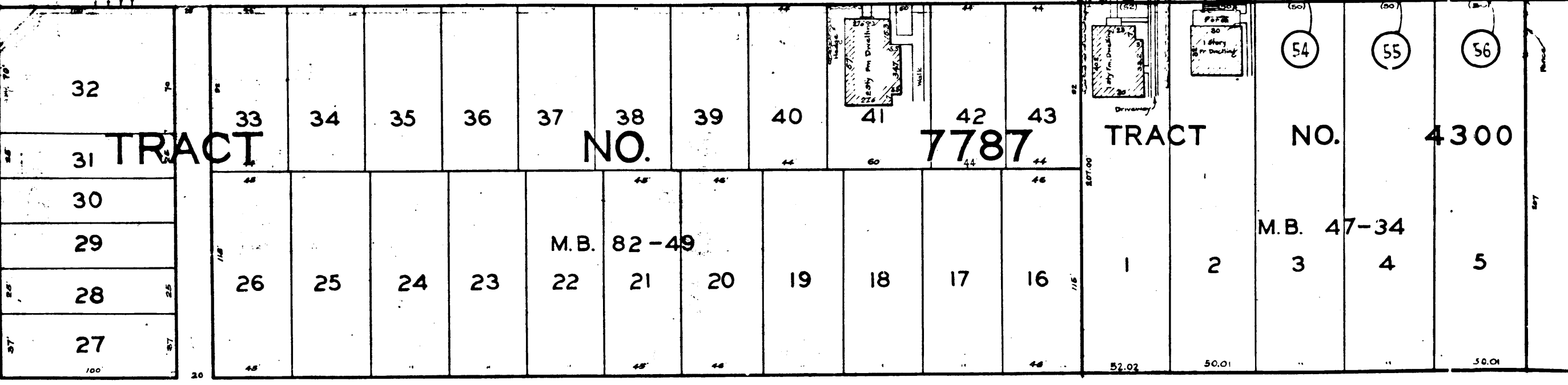
4

2

0

BAKER

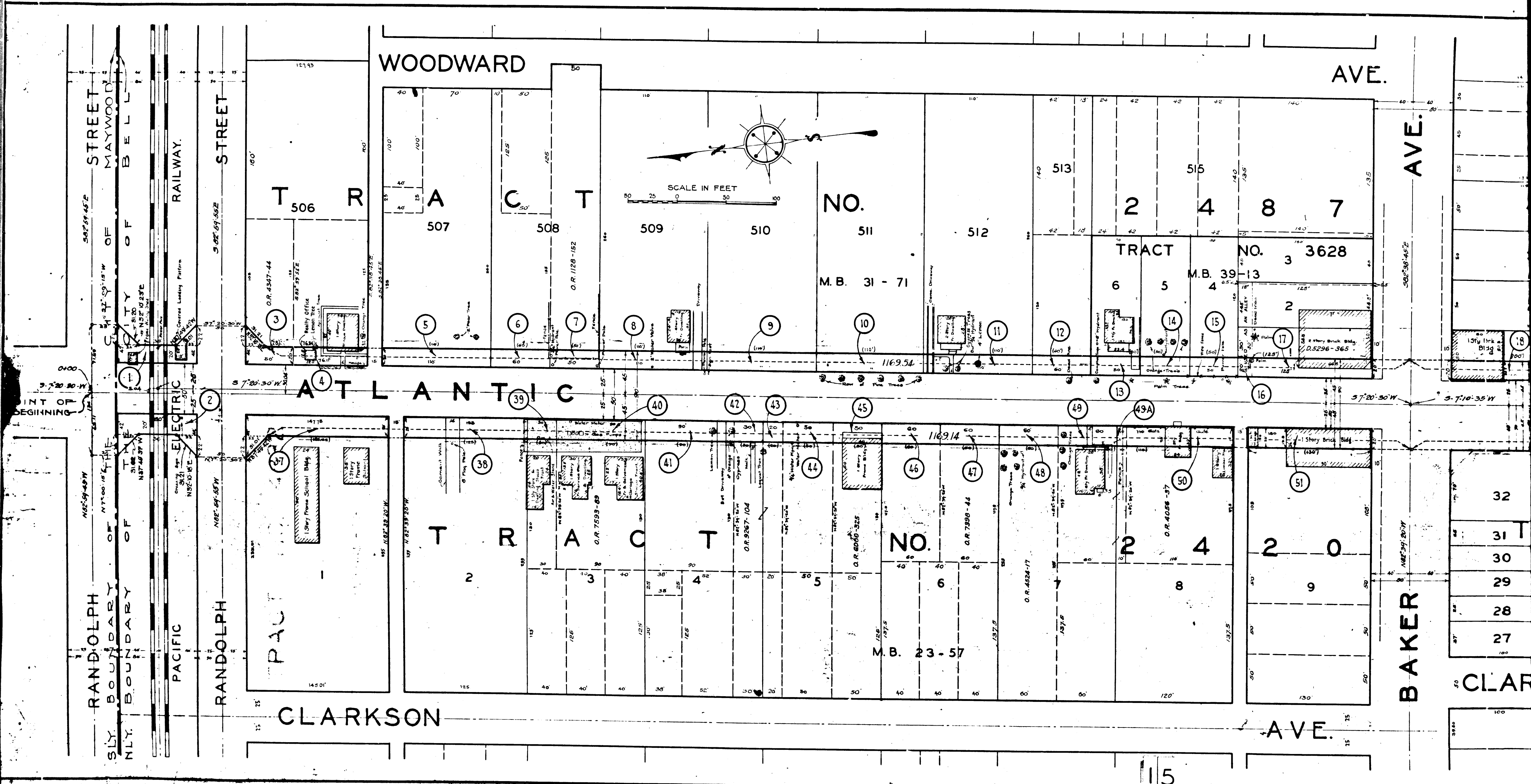
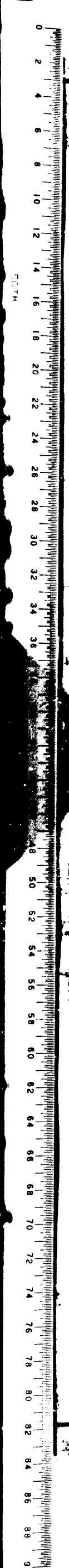
AVE.



CLARKSON

C.F. 1747 -

14



POINT OF BEGINNING

WOODWARD AVE.

AVE.

T 506 R

A 507

C 508

T 509

NO. 510

NO. 511

NO. 512

TRACT NO. 3 3628

ATLANTIC

TRACT NO. 2 4 2 0

TRACT NO. 2 4 2 0

TRACT NO. 2 0

PACIFIC

CLARKSON AVE.

AVE.

BAKER AVE.

TRACT NO. 2 0

CLARKSON

C.F. 1747 -