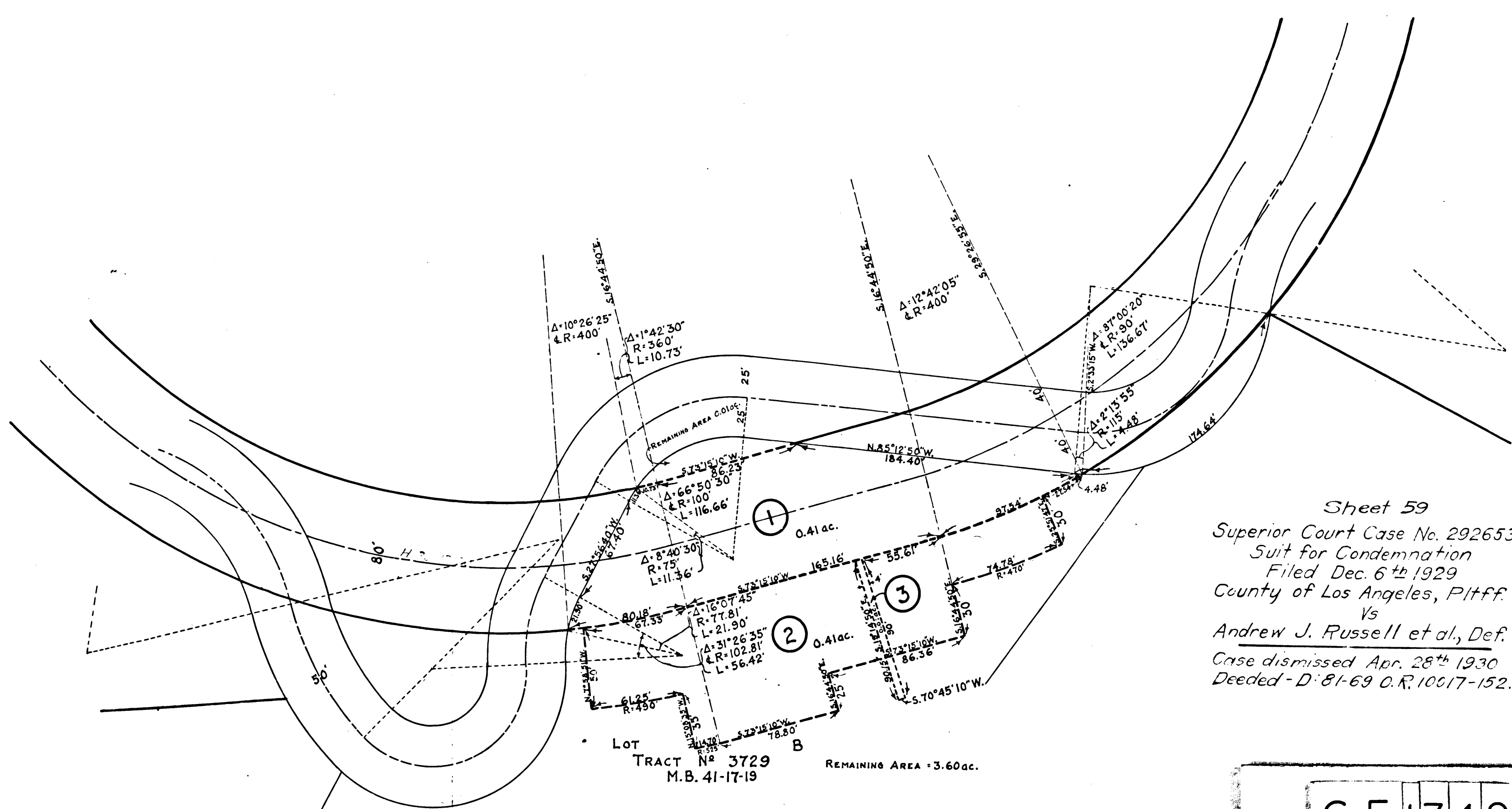
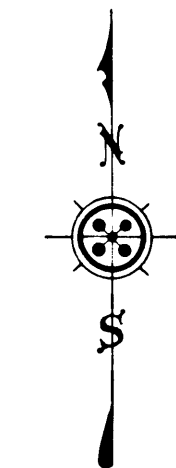


MAP SHOWING
LAND TO BE CONDEMNED
FOR

① TOPANGA CANYON RD.
SCALE 1" = 50' NOV. 12, 1929.



Sheet 59
Superior Court Case No. 292653
Suit for Condemnation
Filed Dec. 6th 1929
County of Los Angeles, Pltff.
Vs
Andrew J. Russell et al, Def.
Case dismissed Apr. 28th 1930
Deeded - D-81-69 O.R. 10017-152. (P. 1)



LEGEND
LAND TO BE CONDEMNED
SHOWN COLORED RED.

C.F. 1749 -

10TH
957
1
2
3
4
5
6
7
8
9
10
11
12
13
14
15
16
17
18

90
88
86
84
82
80
78
76
74
72
70
68
66
64
62
60
58
56
54
52
50