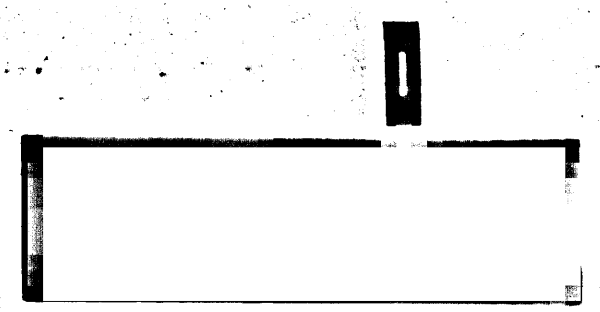


Superior Court Case No. 237107
Suit for Condemnation
Filed Oct. 31st 1927
City of Los Angeles, Plaintiff
vs
G. H. Copeland et al, Defendants.
Interlocutory judgment as per
map, rendered Aug. 27th 1929.
Judg. Bk. 733-222.
New trial granted as to parcels
43 and 44 and interlocutory judg-
ment rendered Dec. 16th 1930.
Judg. Bk. 764-371.
Final Judgment in favor of PHA as per
map, rendered October 13th 1933.
D: 90-145, Q.R. 12435-200.

MAP
SHOWING THE LAND TO BE CONDEMNED
FOR THE
WIDENING AND LAYING OUT
OF
EASTERN AVENUE
BETWEEN
HUNTINGTON DRIVE SOUTH
AND
ALHAMBRA AVENUE
IN THE
CITY OF LOS ANGELES, CALIF.
IN ACCORDANCE WITH ORDINANCES NOS. 56959 AND 58311
JOHN C. SHAW - CITY ENGINEER
AUGUST 1927
SCALE

NOTES:
Land to be condemned shown colored red
Dotted lines and dimensions show property holdings in those
cases where they differ from recorded subdivisions
Figures in circles indicate the parcel numbers as set
forth in paragraph XIII of the complaint.
Index # 8



EASTERN AVENUE
SHEET 1 OF 3 SHEETS

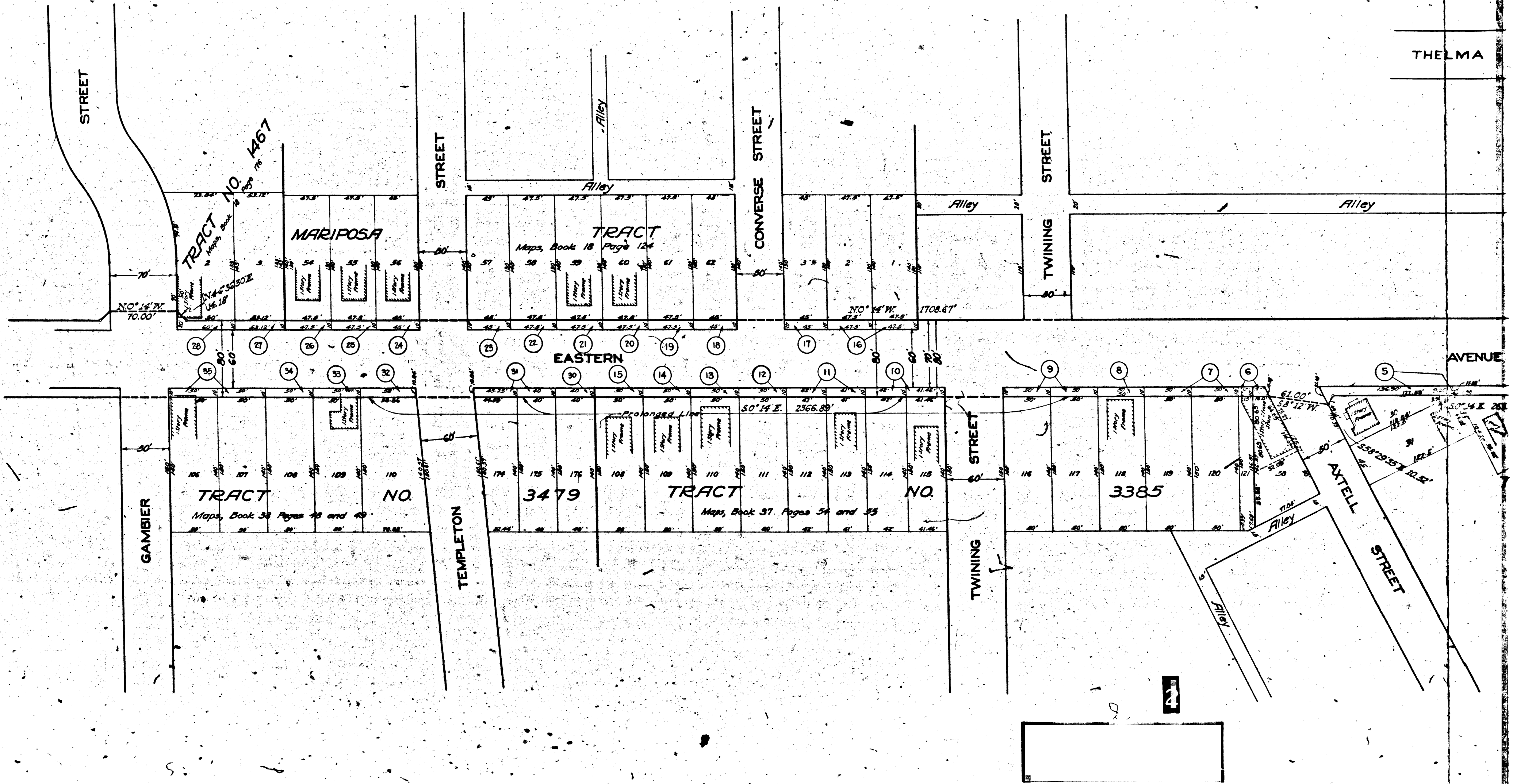
417D-A

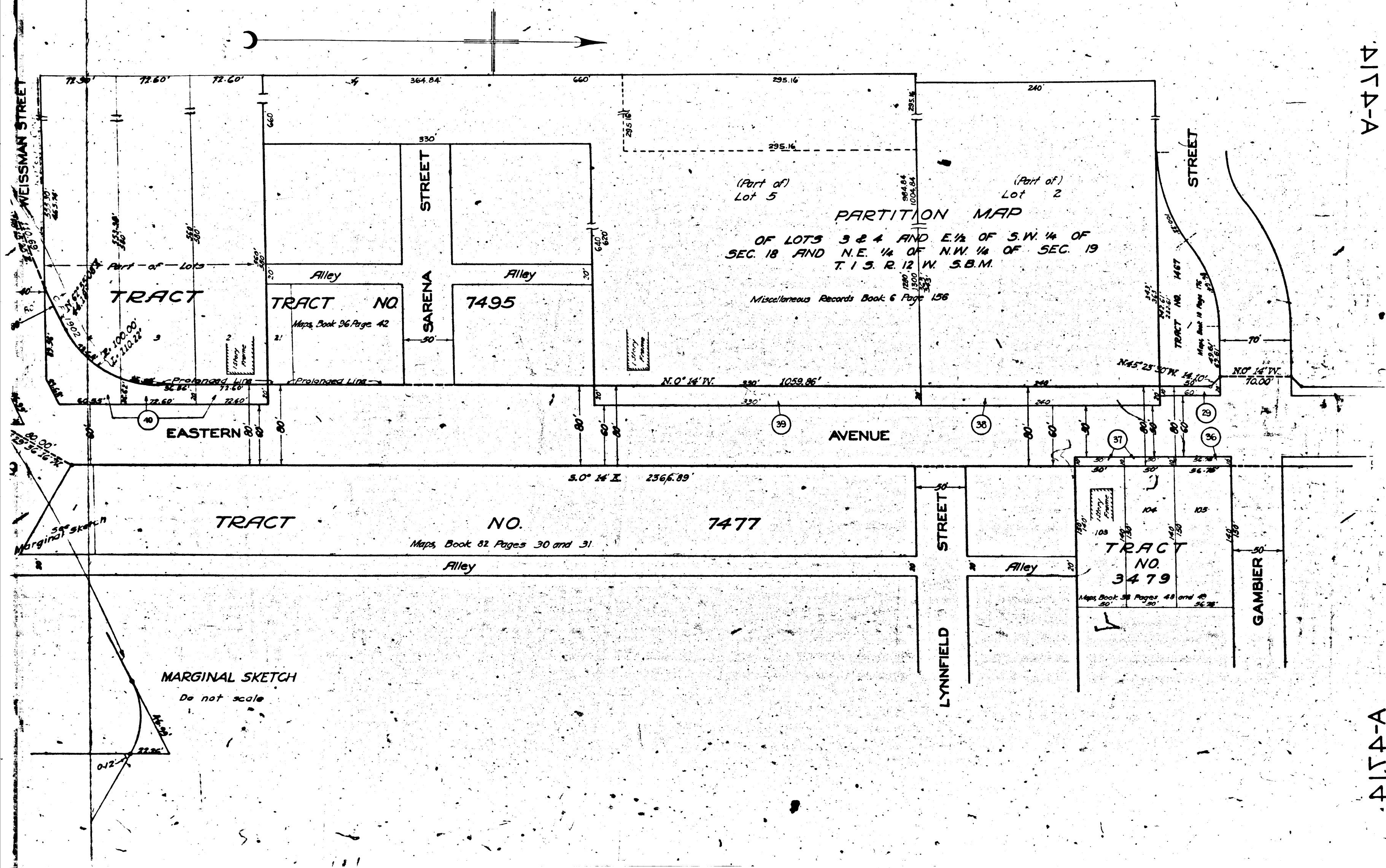
417D-A

REPLACES THE
ALTY OF TOP PART OF
BORDERLINE OF THE

417D-A

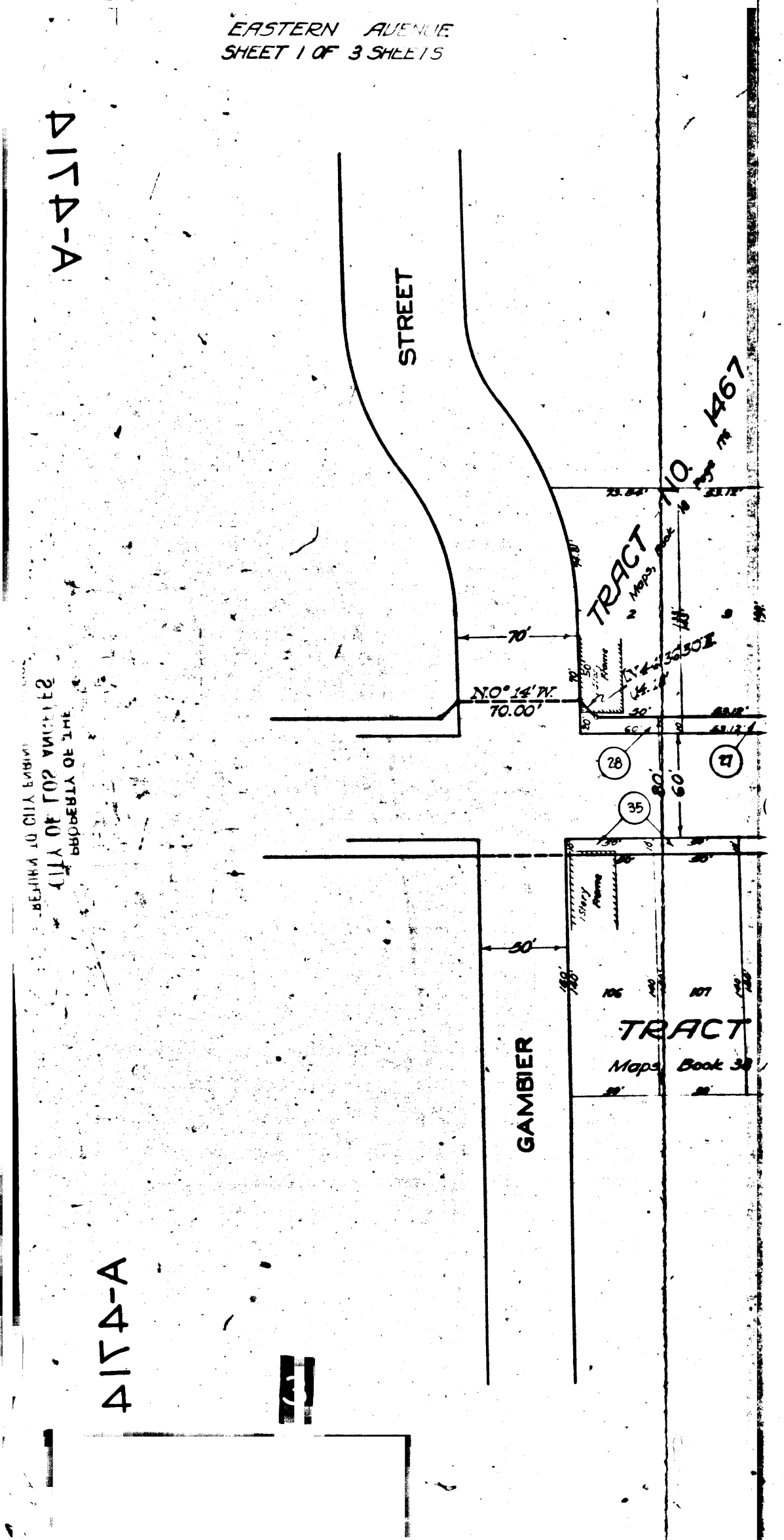
417D-A





4174-A

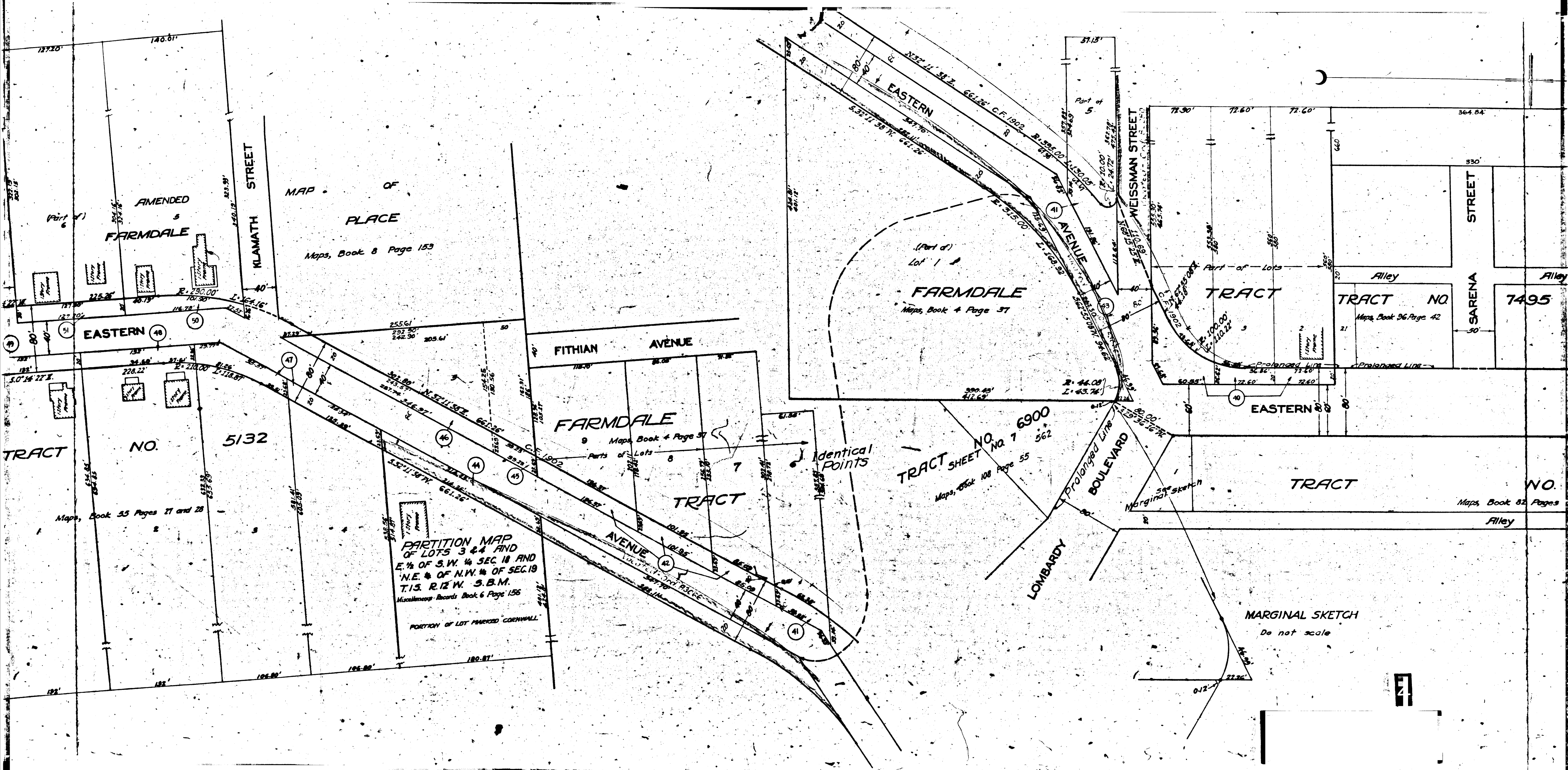
4174-A



4174-A

4174-A

REPLICA OF CITY ENGINEER
OFFICE OF THE CITY ENGINEER
CITY OF CHICAGO



MAP OF PLACE
Maps, Book 8 Page 153

AMENDED
FARMDALE

(Part of)
Lot 1
FARMDALE
Maps, Book 4 Page 37

TRACT NO. 7495
Maps, Book 96 Page 42

TRACT NO. 5132
Maps, Book 55 Pages 77 and 28

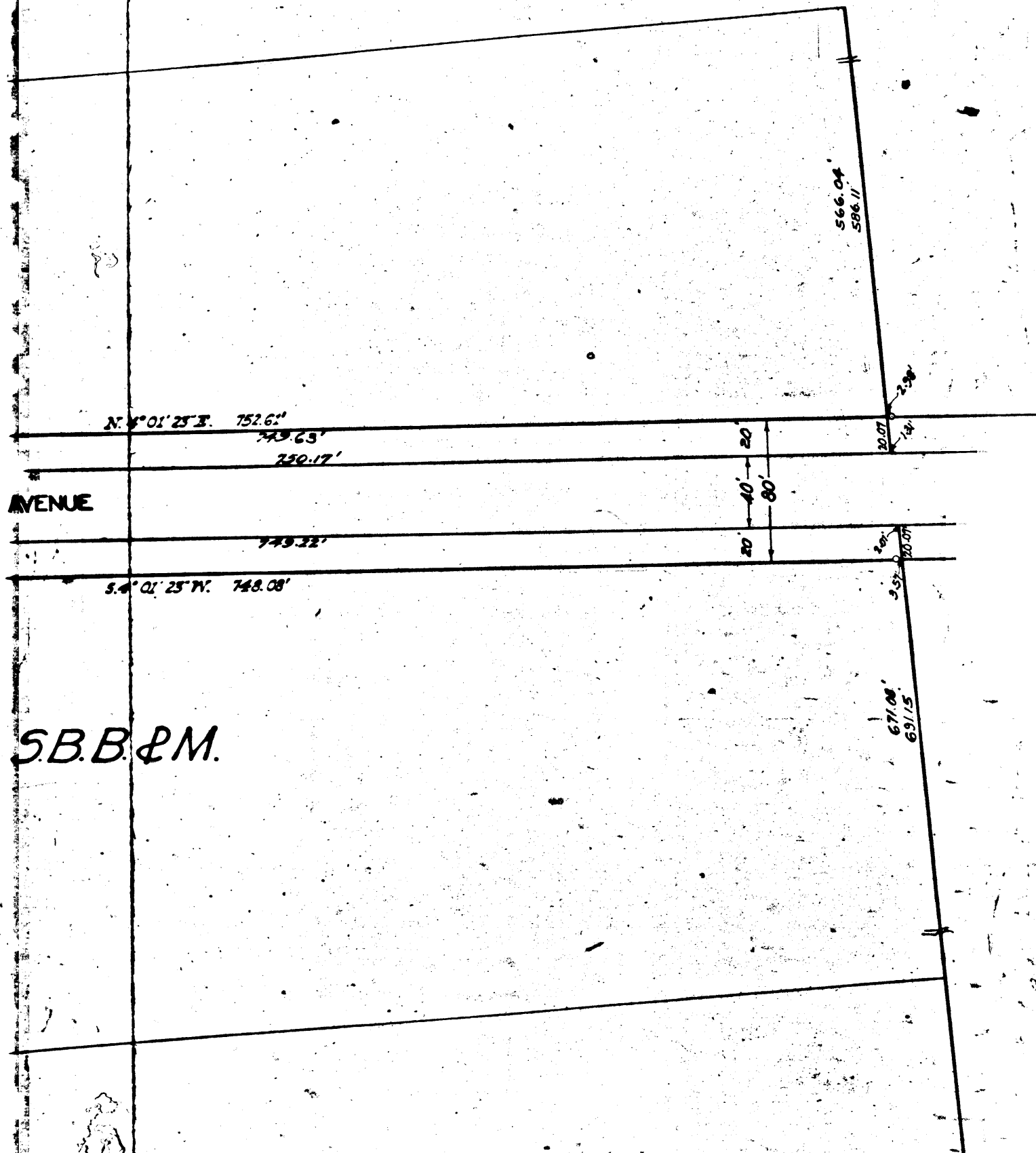
TRACT SHEET NO. 7 562
Maps, Book 108 Page 55

PARTITION MAP
OF LOTS 3 & 4 AND
E. 1/4 OF S.W. 1/4 SEC. 18 AND
N.E. 1/4 OF N.W. 1/4 OF SEC. 19
T.15. R.12 W. S.B.M.
Miscellaneous Records Book 6 Page 156
PORTION OF LOT MARKED 'CORNWALL'

MARGINAL SKETCH
Do not scale

7

EASTERN A.
SHEET 3 OF 3 SHEETS



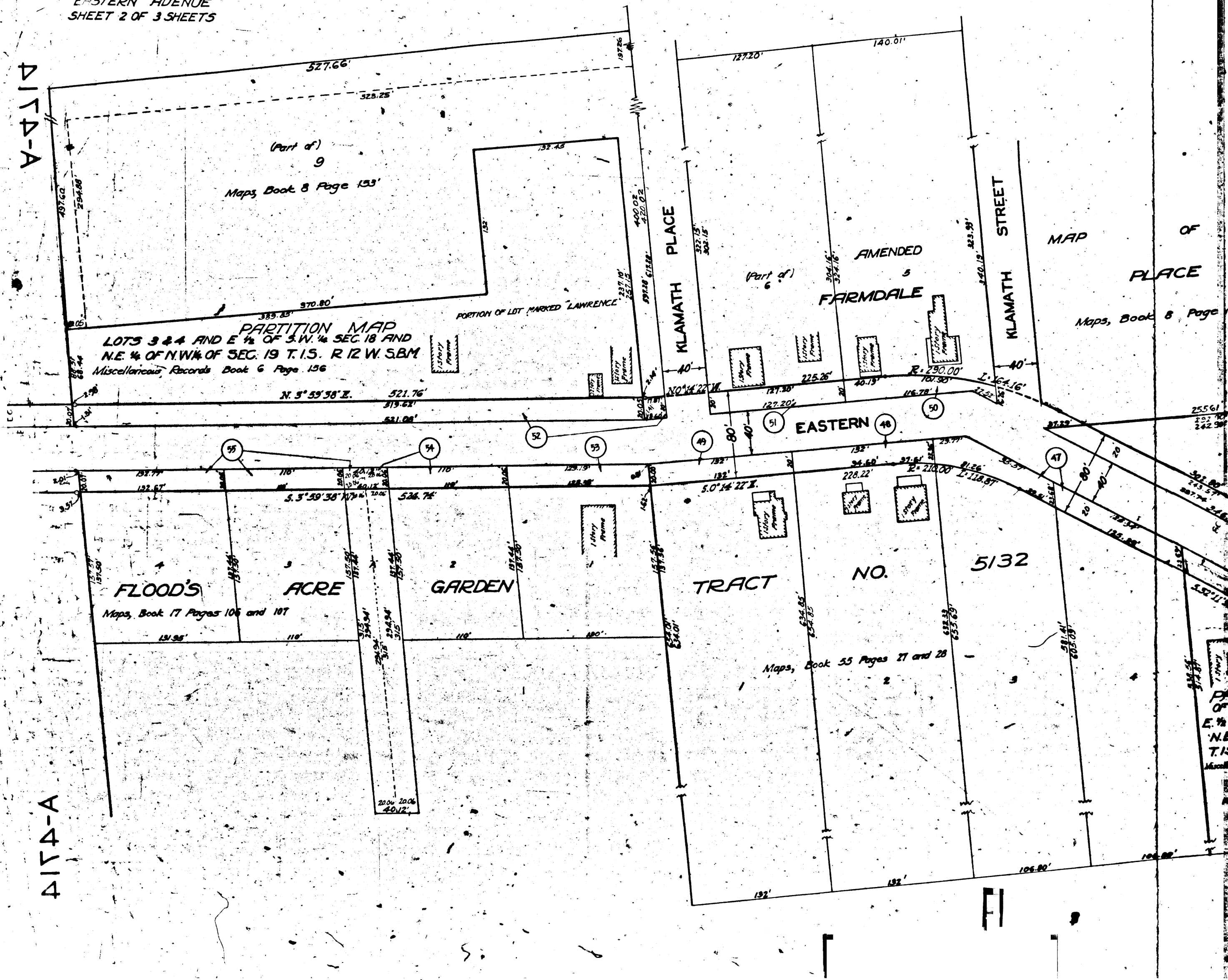
AVENUE

S.B.B. & M.

EASTERN AVENUE
SHEET 2 OF 3 SHEETS

4174-A

4174-A



MAP OF PLACE
Maps, Book 8 Page

EASTERN

NO. 5132

PORTION OF N.E. 1/4 T. 15

