

EXHIBIT "B"
 SHOWING THE LAND TO BE CONDEMNED FOR
 THE WIDENING OF BRAND BLVD. IN THE
 CITY OF GLENDALE

NOVEMBER, 1929 SCALE: 1"=100'

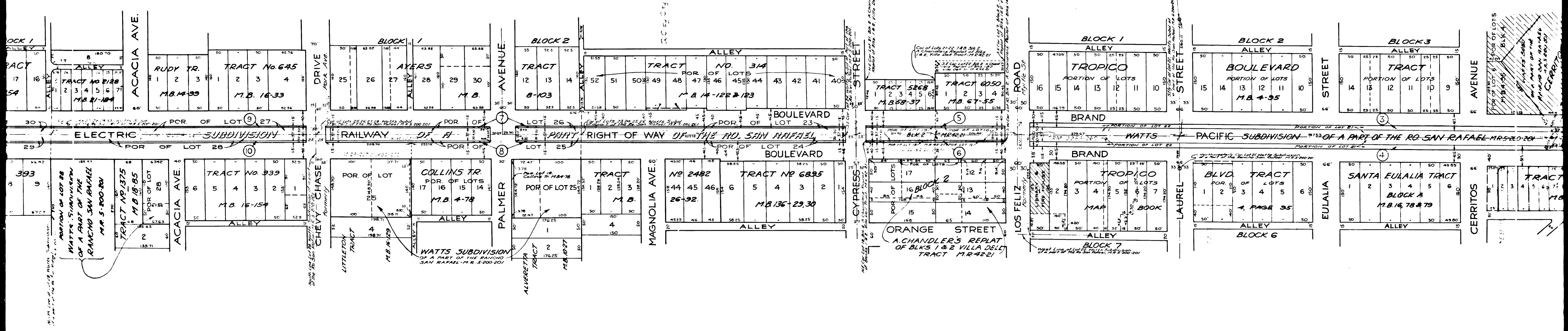
Note
 Land to be condemned, and parcel numbers, shown in red.

Superior Court Case No 242813
Suit for Condemnation
Filed Dec. 9, 1928
City of Glendale, Plaintiff,
vs.
Pacific Electric Railway Co. et al.

Interlocutory judgment in condemnation dated June 20, 1930
Final judgment in favor of Plaintiff as per map, rendered June 23, 1930.

District Judge of the Superior Court
San Francisco, California

C.F. 1751 -



CITY OF SAN RAFAEL - EMBROIDERED

12

C.F. 1751 -

