

Superior Court Case No. 239411
 Suit to Quiet Title
 Filed Nov. 30, 1927
 P. D. Estate Company, Plaintiff
 Vs
 City of Los Angeles et al., Def.
 Judgment ordered for Defendants on April 25th 1929.
 Judgment in favor of Defendants, rendered June 18th 1930. fixes common boundary line as shown by red line on this map.
 Judg. Bk. 760-53.

IN THE SUPERIOR COURT OF THE STATE OF CALIFORNIA
 IN AND FOR THE COUNTY OF LOS ANGELES

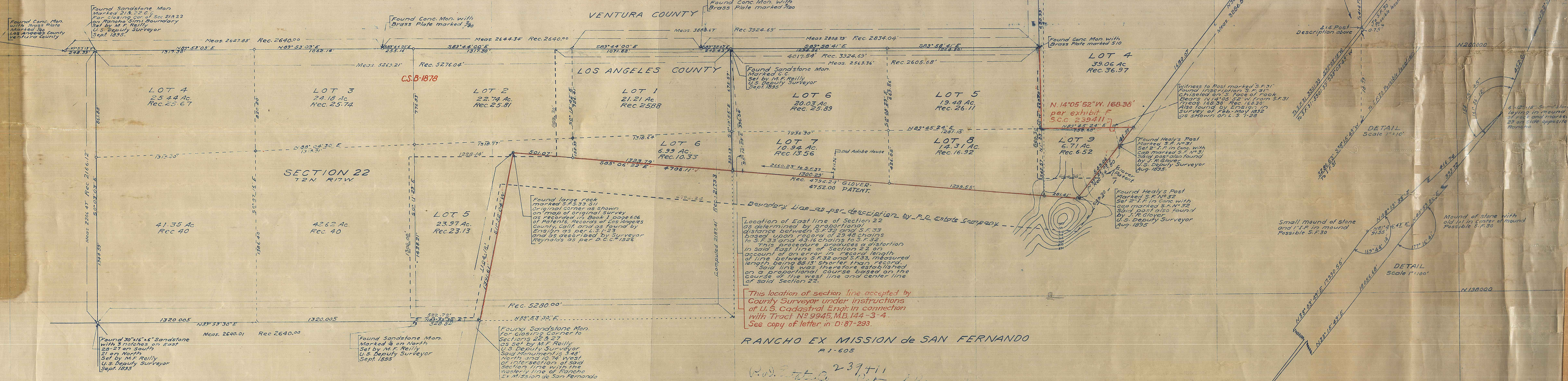
R.D. ESTATE COMPANY
 vs.
 CITY OF LOS ANGELES, et al. No 239411

MAP
 OF A PORTION OF THE
RANCHO EX-MISSION de SAN FERNANDO
 FROM S.F. 29 TO S.F. 34.
 AND
 LOT 4 OF SEC. 23, T.2N., R.17W., S.B.B.&M.
 SCALE 1 1/2" = 400'

Note:- This map is a copy of Defendants Exhibit "G" filed in S.C.C. No. 239411.

Note:- This survey made Apr. 1927 under the supervision of R.R. Proctor of the Dept. of Water and Power of the City of L.A. Co. Sur. (Flickwin)

RANCHO SIMI
 M.R. 3-7 VENTURA COUNTY



RANCHO EX MISSION de SAN FERNANDO
 A.1-605

Sup. Ct. Case No. 239411
 City of Los Angeles vs. P.D. Estate Co.

P.D. Estate Co.
 City of Los Angeles

To S.F. 34
 2" x 4" in concrete being
 the South Westerly
 Corner of Lot 4
 See Map, Record
 of Los Angeles County

S.F. 31
 2" x 4" in concrete with
 Cop Stamped S.F. 31

DETAIL
 Scale 1" = 100'

DETAIL
 Scale 1" = 100'

100.000

N 138.000

N 200.000

N 202.000

N 204.000

N 204.000

N 202.000

N 200.000

N 138.000

E 300.000

E 300.000

E 300.000

E 400.000

E 600.000

E 900.000

100.000