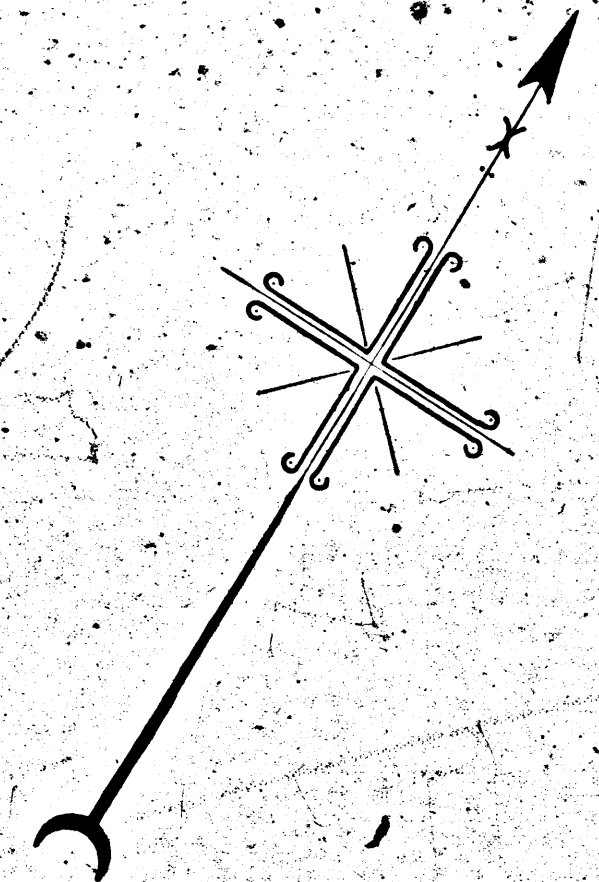
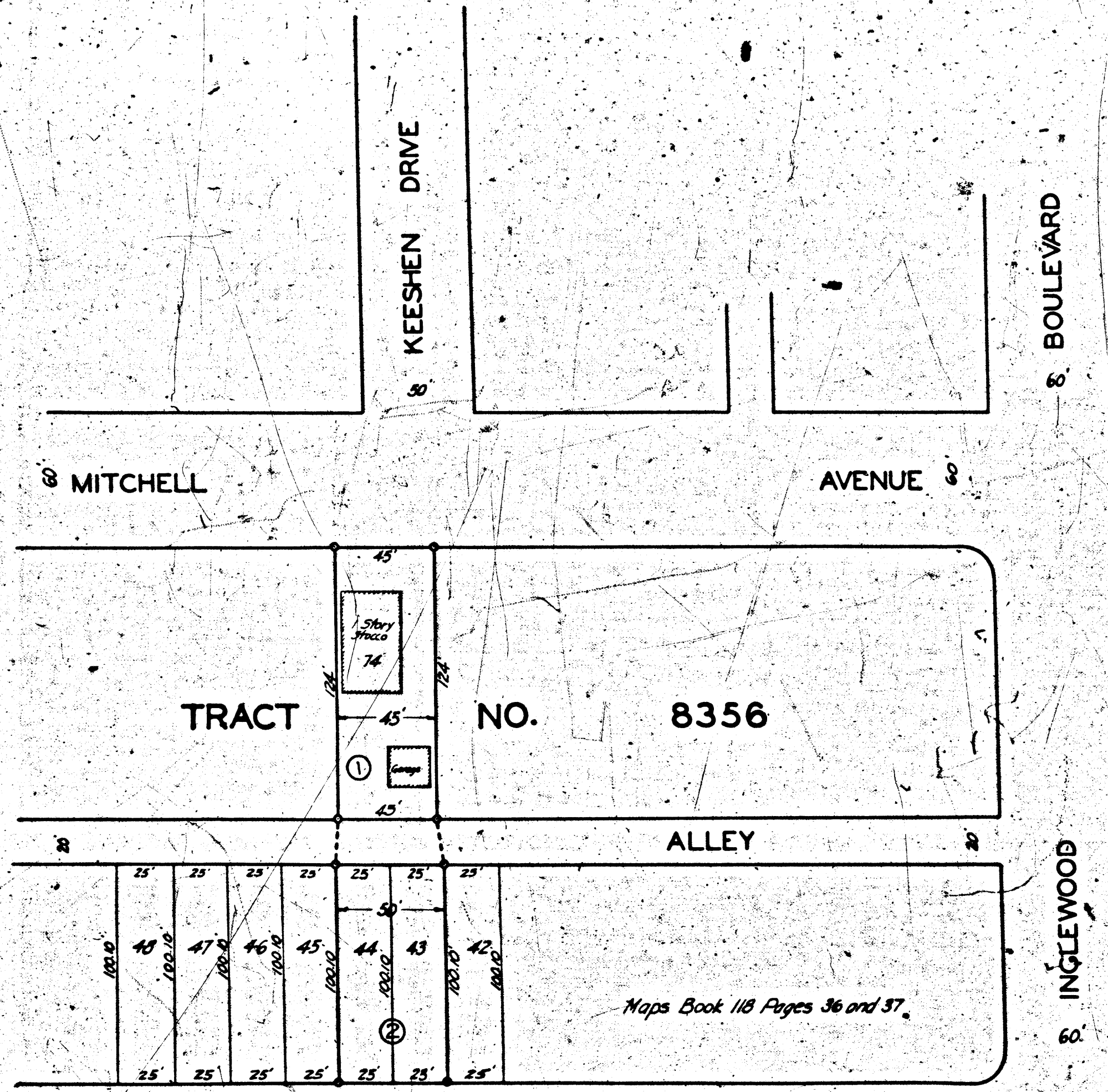


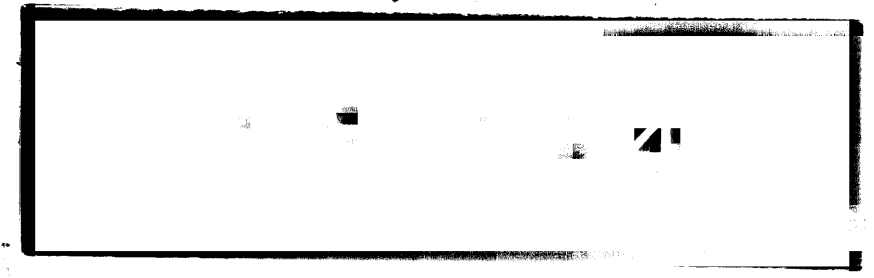
KEESHEN DRIVE
MITCHELL AVE TO WASHINGTON
CHARGE 75332



Sheet 21
Superior Court Case No. 291687
Suit for Condemnation
Filed Nov. 19th 1929
City of Los Angeles, Plaintiff
Vs
Joseph O. Downing et al., Def.
Interlocutory judgment as per
map, rendered Apr. 5th 1930.
Judg. Bk. 752-51.
Proceedings abandoned Sept.
11th 1931.
Judgment of dismissal ren-
dered Sept. 18, 1931. Judg. Bk.
790-357.

MAP
SHOWING THE LAND TO BE CONDEMNED
FOR THE
OPENING AND EXTENDING OF
KEESHEN DRIVE
FROM
MITCHELL AVENUE
TO
WASHINGTON PLACE
IN THE
CITY OF LOS ANGELES CAL.
IN ACCORDANCE WITH ORDINANCES NOS 64237 AND 65078
JOHN C SHAW CITY ENGINEER
OCTOBER 1929
SCALE 1 INCH = 50 FEET

Notes
Land to be condemned shown colored red
Figures in circles indicate the parcel numbers as set forth in paragraph VII
of the complaint.



RECORDED
INDEXED
CITY ENGINEER
JOHN C SHAW
OCT 10 1929