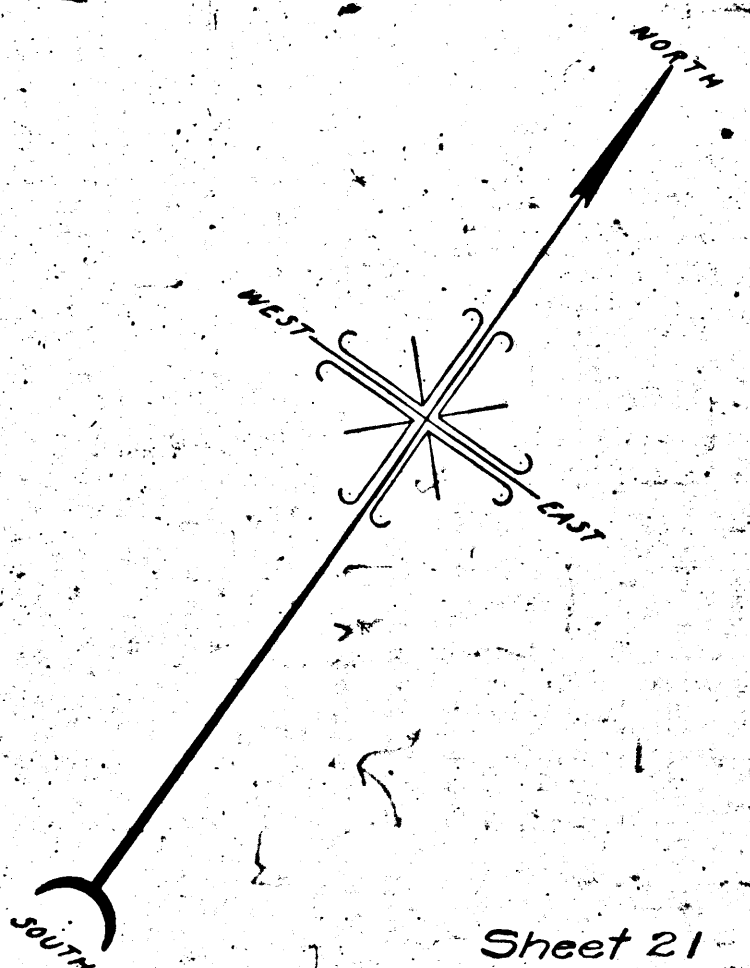
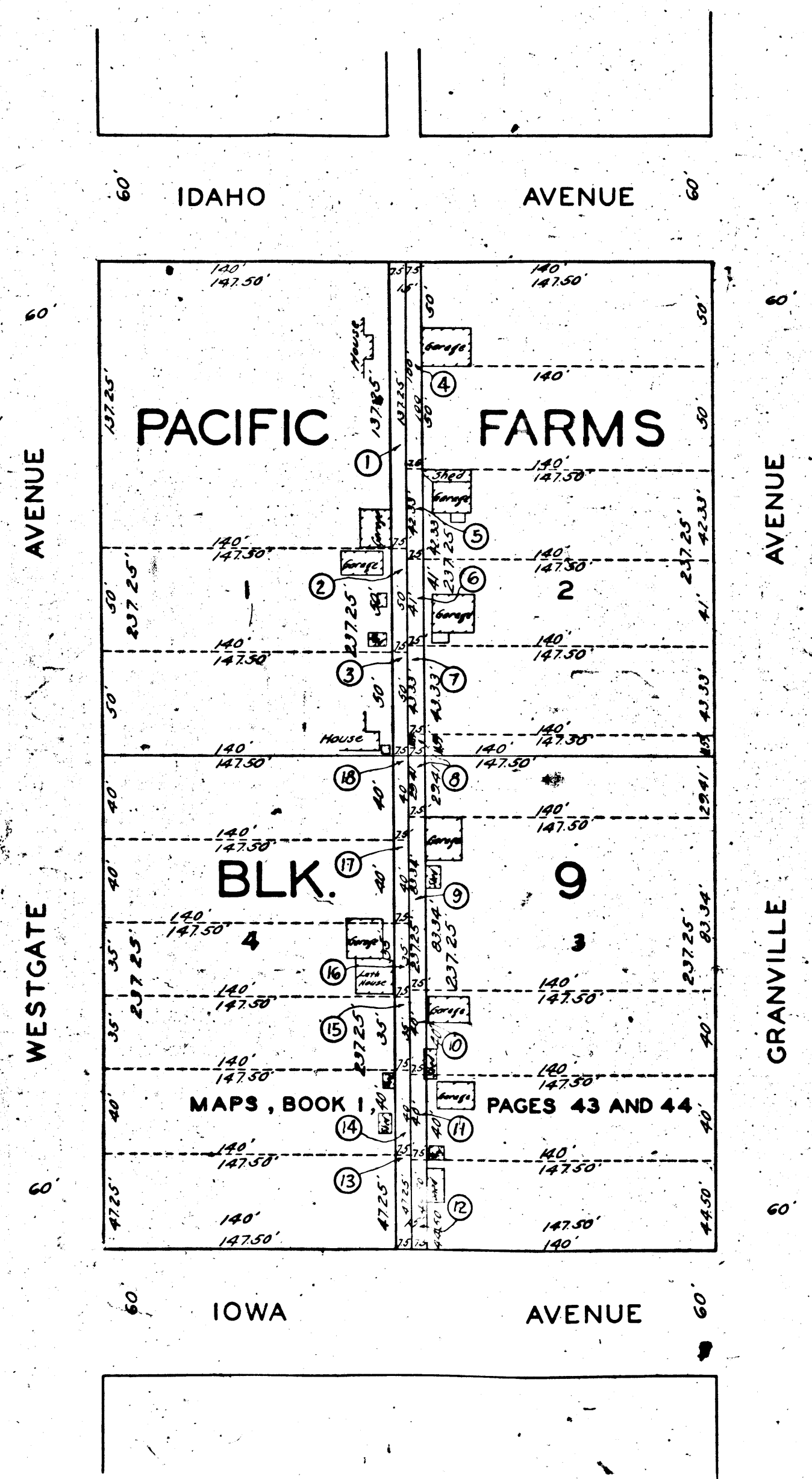


A-2173-A

A-2173-A



MAP
 SHOWING THE LAND TO BE CONDEMNED
 FOR THE OPENING OF AN
ALLEY
 FROM
 IDAHO AVENUE TO IOWA AVENUE
 MIDWAY BETWEEN
 GRANVILLE AVENUE AND WESTGATE AVENUE
 IN THE CITY OF LOS ANGELES CAL
 IN ACCORDANCE WITH ORDINANCES NOS. 64231 AND 65099
 JOHN C. SHAW CITY ENGINEER NOVEMBER 1929
 SCALE 1"=50'

Sheet 21
 Superior Court Case No. 293865
 Suit for Condemnation
 Filed Dec. 27th 1929
 City of Los Angeles, Plaintiff
 Vs
 Elizabeth Johnson et al., Def.
 Amended interlocutory judgment
 as per map, rendered Feb. 20th
 1931. Judg. Bk. 774-62.
 Final judgment in favor of Pltff. as
 per map, rendered January 22nd 1933.

NOTE: Land to be condemned shown colored red.
 Dotted lines and figures show property holdings in cases where they differ
 from recorded subdivisions.
 Figures in circles indicate the parcel numbers as set forth in paragraph VIII
 of the complaint.

D: 90-15, O.R. 11939-398.

A-2173-A

A-2173-A

