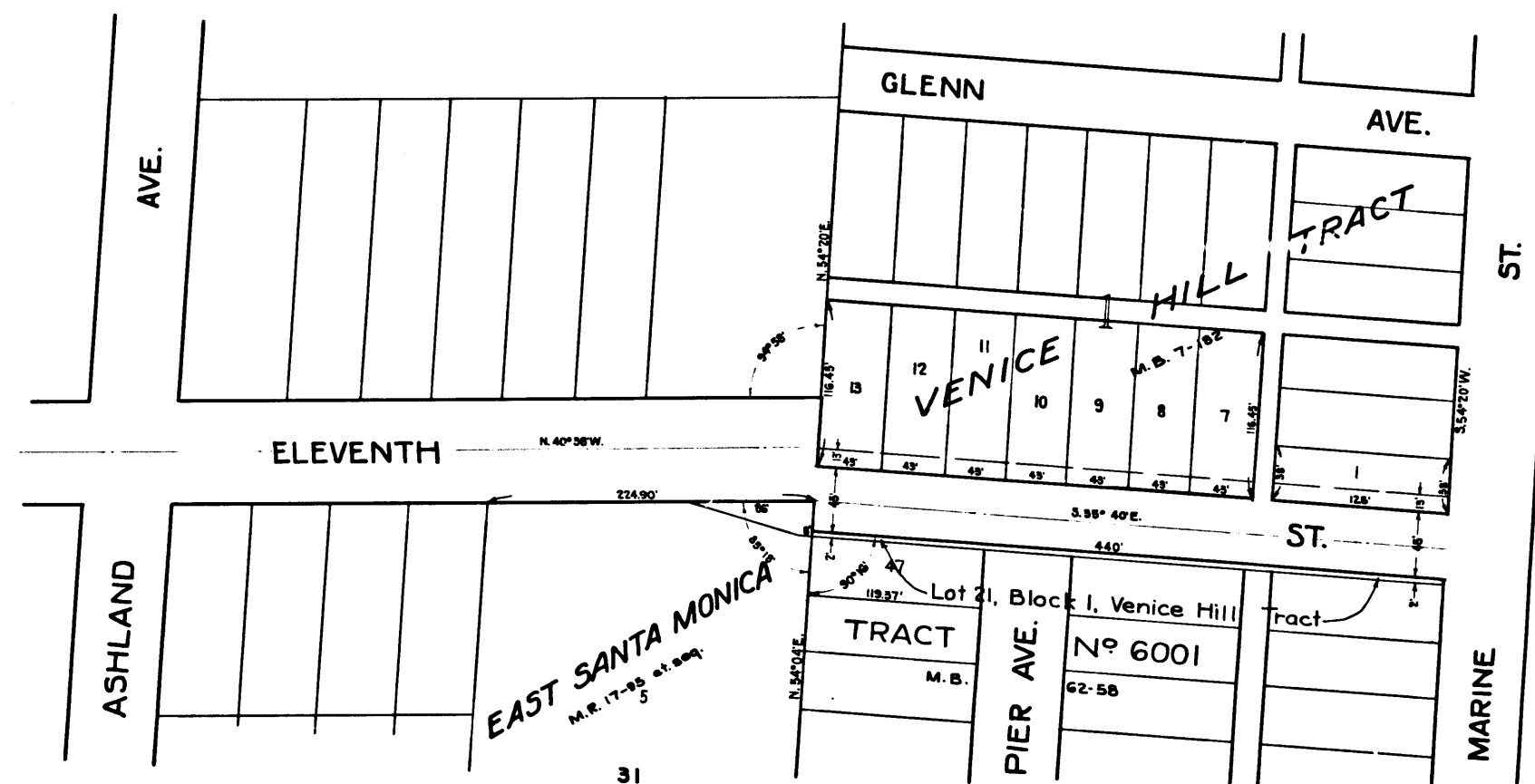


Scale: 1"=80'
Key
Denotes parcels of land to be acquired.



MAP 467 Being Sheet 4 of MAP 466.

EXHIBIT "A"

Showing Land to be Acquired for the Widening of ELEVENTH ST. in the City of SANTA MONICA

EXHIBIT "C"

Sheet 21
Superior Court Case No. 295157
Suit for Condemnation
Filed Jan. 21, 1930
City of Santa Monica, Plff.
Vs.
Julius Bierlich, et. al., Def.
Case dismissed as to parcel 11, Sept. 19, 1935.
Proceedings abandoned by Special Ordinance No. 631 of the City of Santa Monica Jan. 28-'41

Note:-- Sheets 1, 2 and 3 of Map No. 466 which show Assessment District were not copied. Co. Sur.

C.F. 1764 -