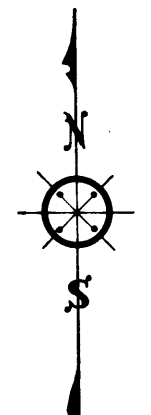
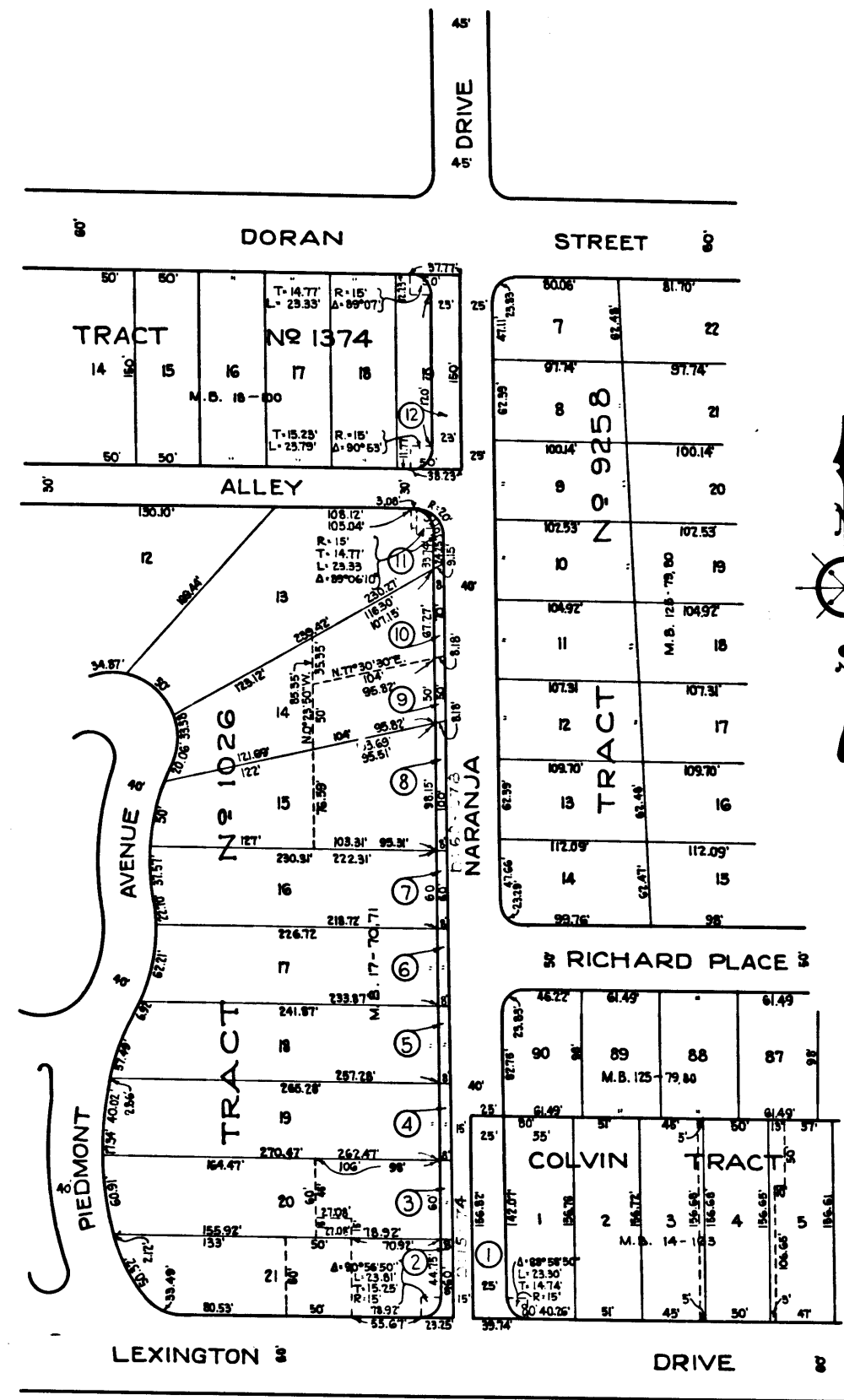




10TH
9 5 7

VENCO
PACIFIC, INC.

50TH



A-420
Sht. 41
Superior Court Case No. 295289
Suit for Condemnation -
Filed Jan. 23, 1930
City of Glendale, Pltff.
Vs
Daisy D. Grant, et al. Def.
*Interlocutory judgment as per
map, rendered July 14th 1930.
Judg. Bk. 760-155*
*Final Judgment in favor of Pltff.
as per map, rendered Feb. 25, 1931.*
D-82-195, O.R. 10701-111

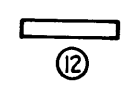
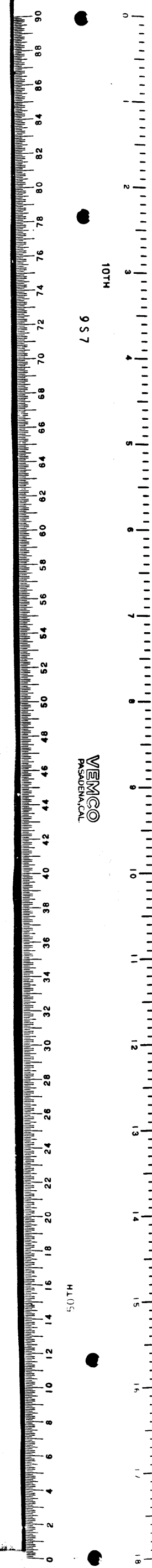
— LEGEND —
 SHOWS LAND TO BE CONDEMNED
 (2) SHOWS PARCEL NUMBERS
 SCALE: 1" = 100'

EXHIBIT - C
 NARANJA DRIVE OPENING AND WIDENING

C.F. 1765 -



10TH
9 5 7

VENCO
PACIFIC, INC.

50TH