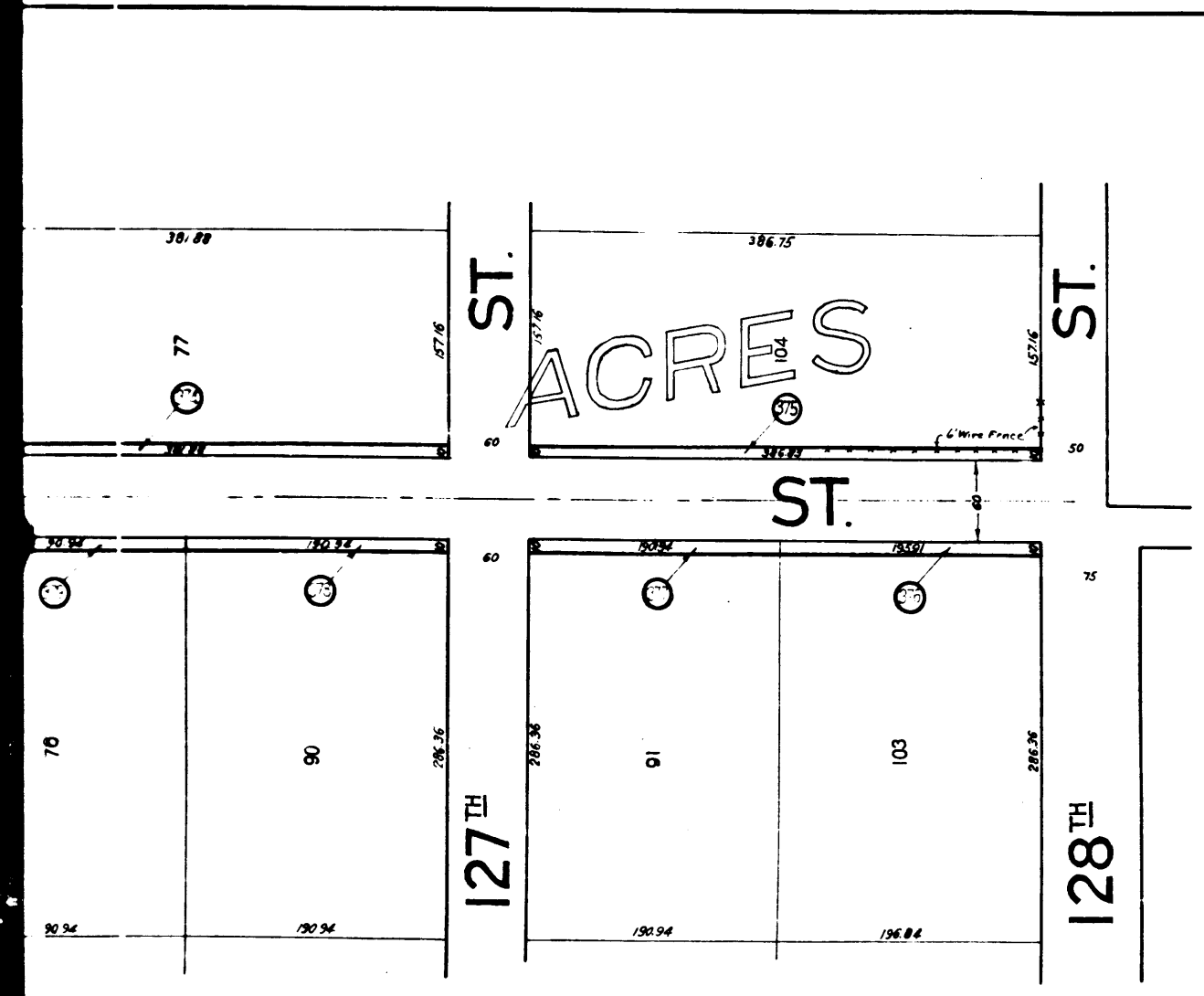



A. & I. DISTRICT NO. 73	
DRAWN BY	G.M. PLESSEN 7-14-27
TRACED BY	G.M. PLESSEN 7-14-27
CHECKED BY	J.W.G. HANFORD 8-12-27




EXHIBIT 'A'
 ACQUISITION AND IMPROVEMENT DISTRICT NO 73
 OF THE COUNTY OF LOS ANGELES
 FOR
THE WIDENING OF
SAN PEDRO STREET
 Map showing property to be acquired in accordance with the provisions of the 'Acquisition and Improvement Act of 1925' approved May 23, 1925.
 SCALE 1"=100'
 J.E. ROCKHOLD — COUNTY SURVEYOR
 FEBRUARY 1930
LEGEND
 LAND SOUGHT TO BE ACQUIRED SHOWN IN RED
 NUMBERS IN CIRCLES INDICATE PARCELS SOUGHT TO BE CONDEMNED
 THE PARCELS ARE DESCRIBED IN PARAGRAPH VII OF THE COMPLAINT.
 PORTION COLORED RED SHOWS LOCATION, GENERAL ROUTE AND TERMINI OF PUBLIC ROAD TO BE CONDEMNED.

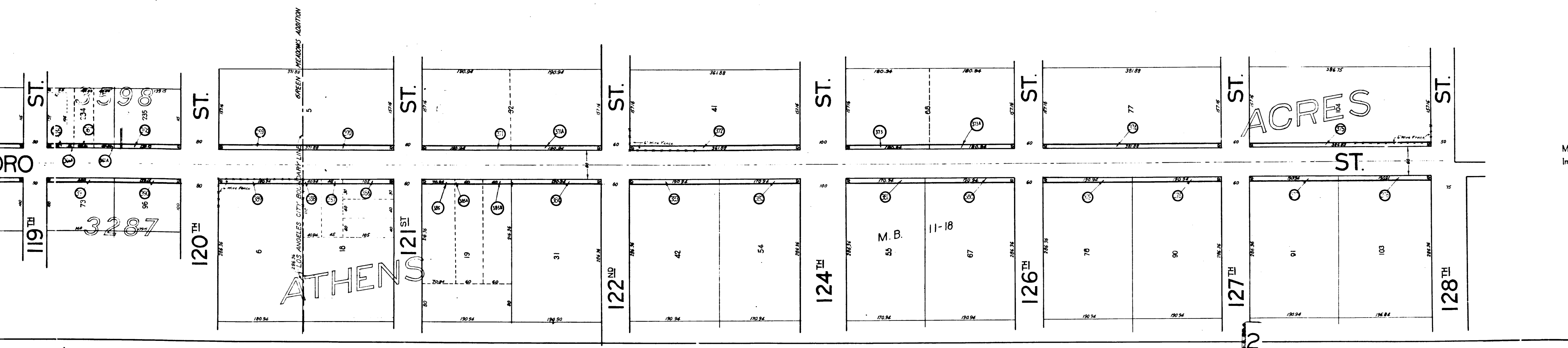
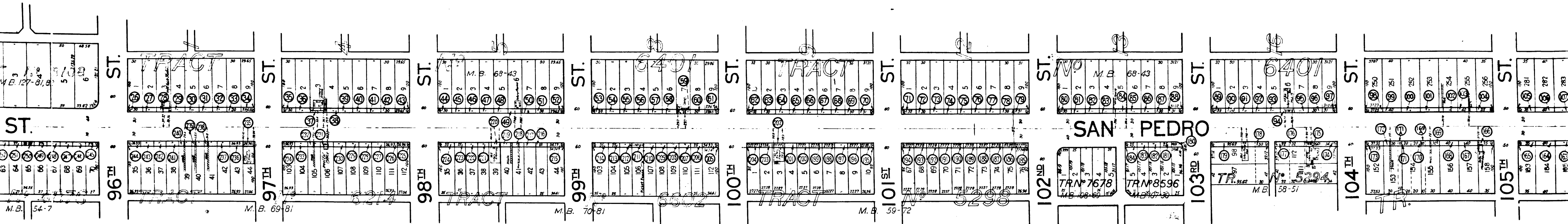
A & I DISTRICT NO 73	
Drawn by	G.M. PlesSEN 7-14-27
Traced by	G.M. PlesSEN 7-20-27
Checked by	J.W.G. Hanford 8-12-27

SHEET 1 OF 3 SHEETS
 CONDEMNATION MAP
 SAN PEDRO STREET
 A & I DISTRICT NO 73

Sht. 26
 Sht. 6
 Superior Court Case No. 297896
 Suit for Condemnation
 Filed Feb. 28th 1930
 County of Los Angeles, Pltff.
 vs.
 George J. Abajian et al., Def.
 Proceedings abandoned Aug. 10th
 1931. See file in case for various
 judgments of dismissal.

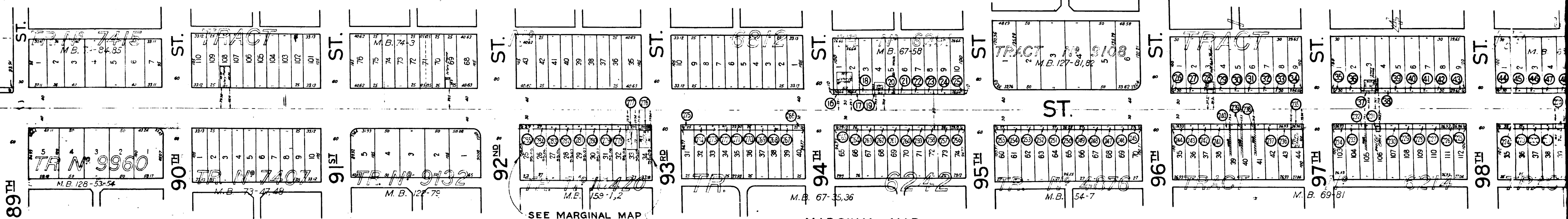
C.F. 1776 -

SHEET NO. 3 OF 3 SHEETS
 DISTRICT NO. 73

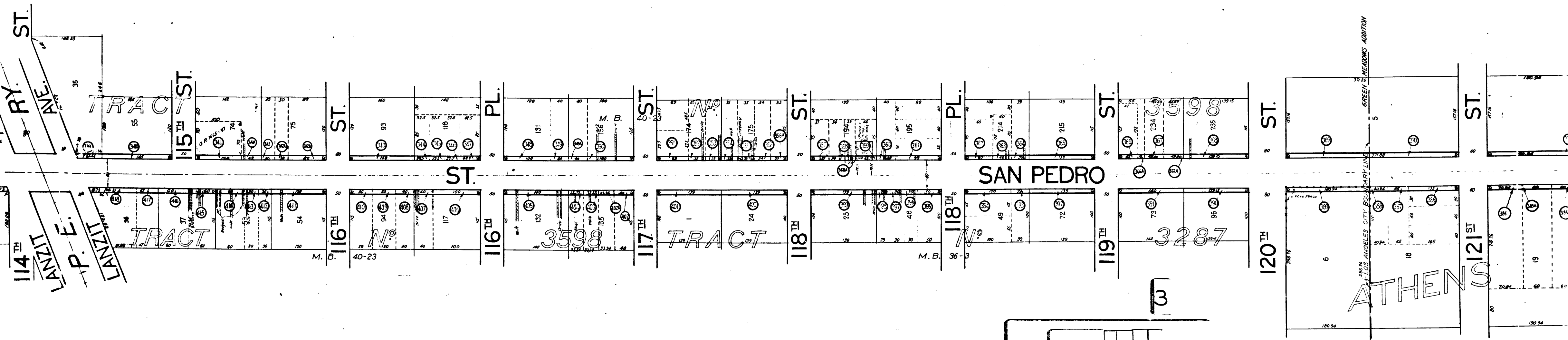
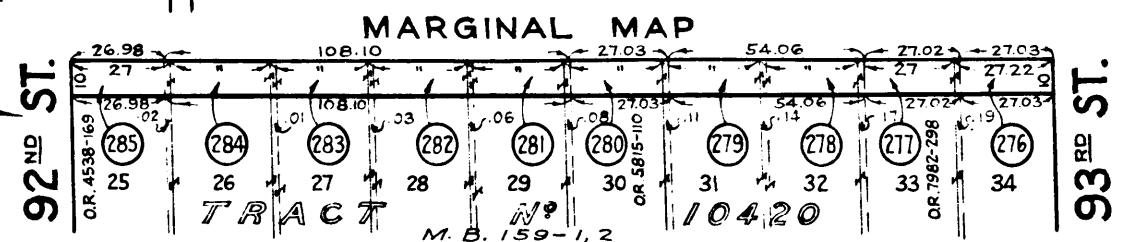


C.F. 1776 -

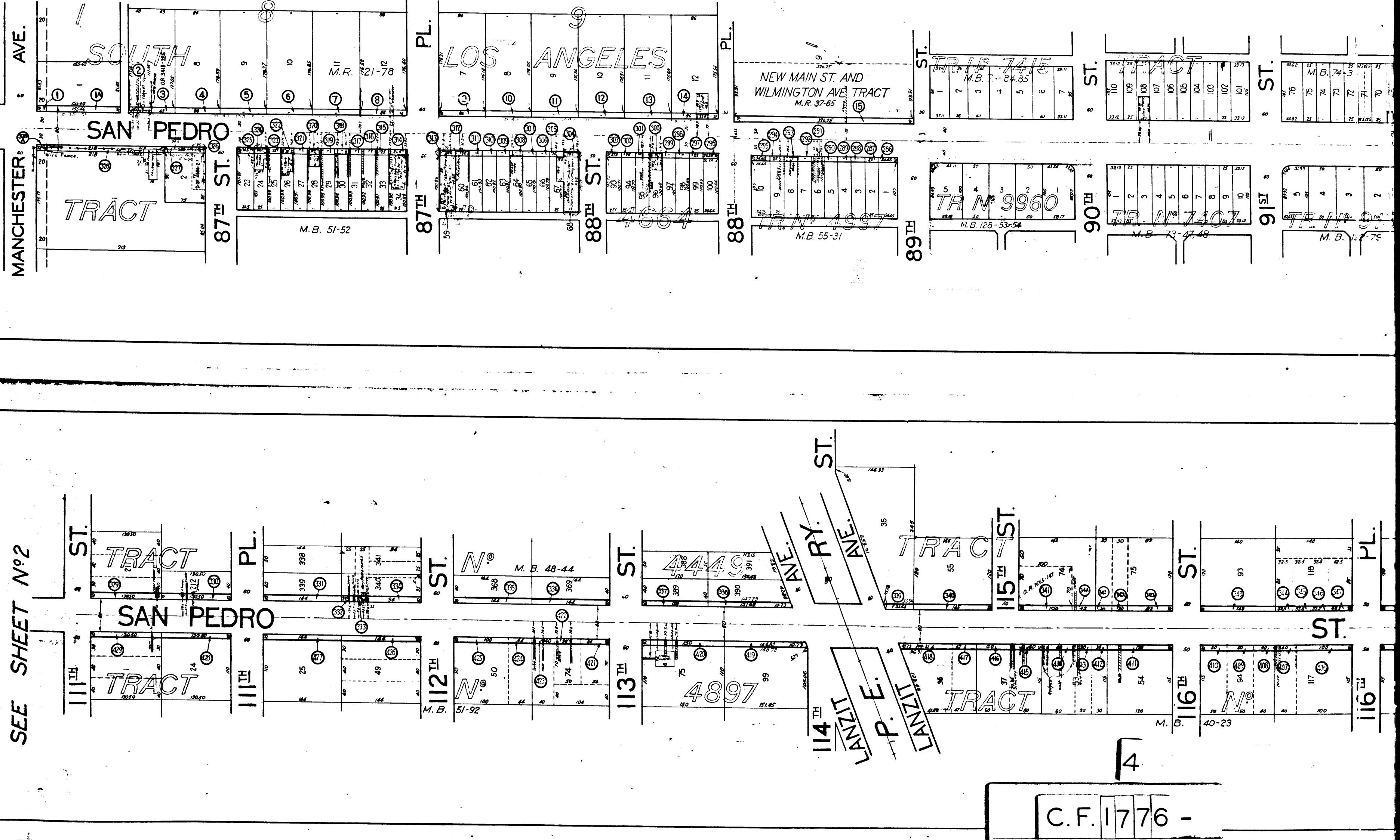
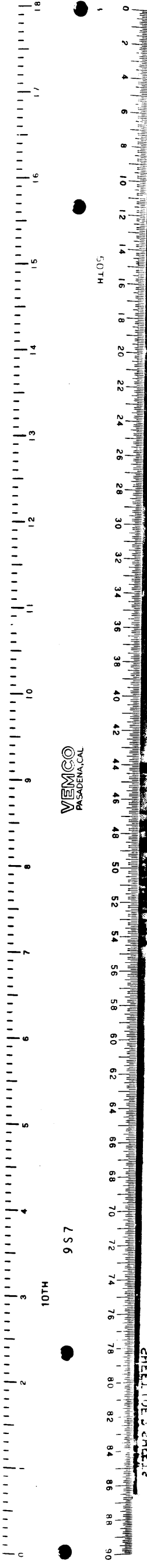
MAIN ST. AND
STON AVE TRACT
M.B. 37-65



SEE MARGINAL MAP



C.F. 1776 -



SEE SHEET N^o 2

4
C.F. 1776 -