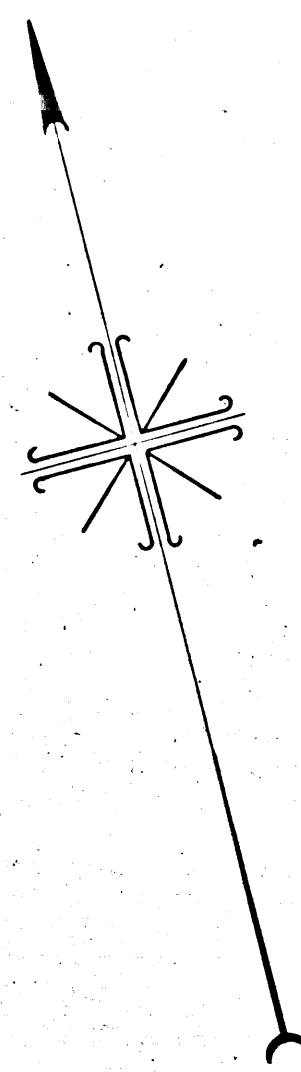
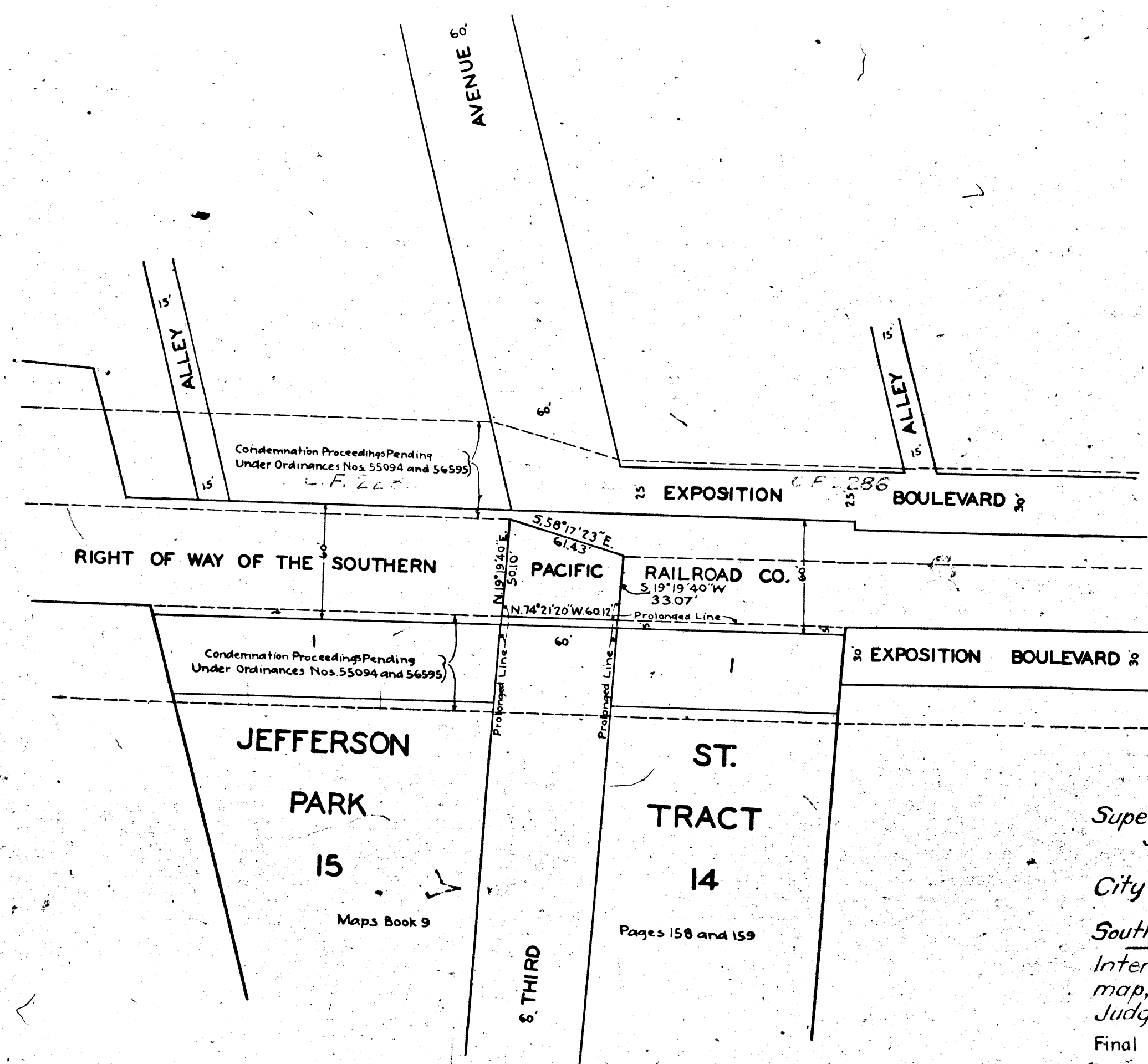


5073-A

5073-A

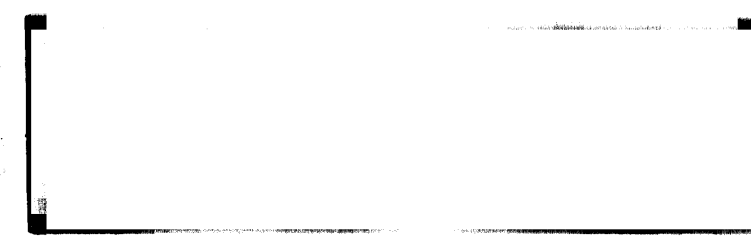


MAP
 SHOWING THE LAND TO BE CONDEMNED
 FOR
 PUBLIC STREET PURPOSES
 ACROSS A PORTION OF THE RIGHT OF WAY
 OF THE
 SOUTHERN PACIFIC RAILROAD CO
 AT THE INTERSECTION OF
 EXPOSITION BOULEVARD
 WITH
 THIRD AVENUE
 IN THE CITY OF LOS ANGELES CALIF
 IN ACCORDANCE WITH ORDINANCE NO. 65616
 JOHN C. SHAW CITY ENGINEER DECEMBER 1929
 SCALE 1 INCH=50 FEET

Sht. 24
 Sht. 5
Superior Court Case No. 295877
Suit for Condemnation
Filed Feb. 3rd 1930
City of Los Angeles, Plaintiff
vs
Southern Pacific Railroad Co., Def.
Interlocutory judgment as per
map, rendered Sept. 4th 1930.
Judg. Bk. 762-198.
 Final judgment in favor of Plaintiff as
 per map, rendered January 2nd., 1931.

NOTE: Land to be condemned shown colored red.

D: 84-80, J.B.769-172
O.R.10674-381



5073-A

5073-A