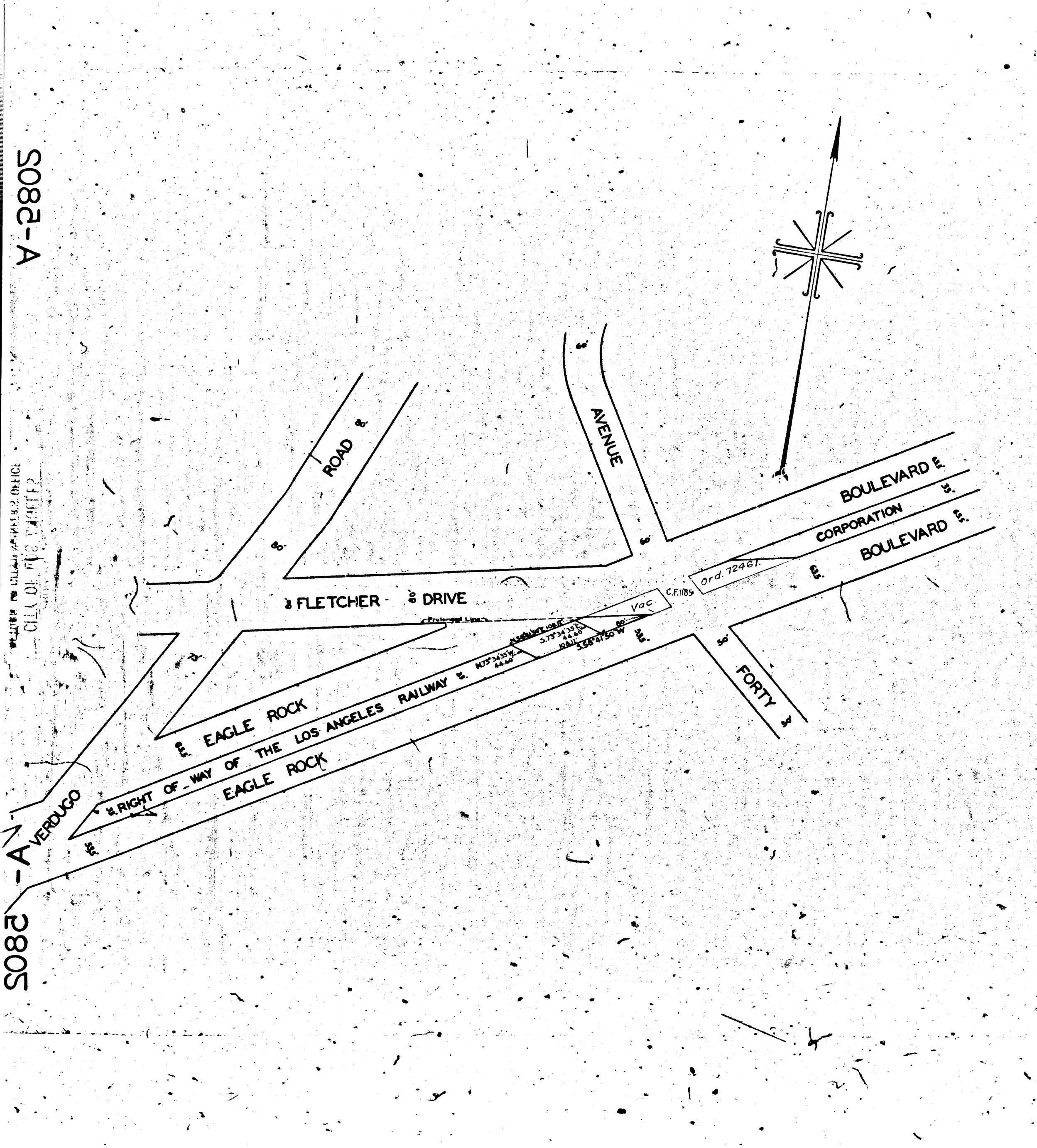


S082-A  
S0805

CITY OF LOS ANGELES  
ENGINEER



O.E.W.-ED- AVE. 40 CROSSING L.A.R.Y. AT EAGLE ROCK BLVD.  
FILE NO. 9720-29 CHARGE NO. 97206

**MAP**  
 SHOWING THE LAND TO BE CONDEMNED FOR  
**PUBLIC STREET PURPOSES**  
 BEING A PORTION OF THAT CERTAIN RIGHT-OF-WAY  
 OF THE  
**LOS ANGELES RAILWAY CORPORATION**  
 LYING BETWEEN THE  
 NORTHWESTERLY AND SOUTHEASTERLY ROADWAYS OF  
**EAGLE ROCK BOULEVARD**  
 SOUTHWESTERLY OF  
**AVENUE FORTY**  
 IN THE  
 CITY OF LOS ANGELES CALIF.  
 IN ACCORDANCE WITH ORDINANCE NO. 65675  
 J.J. JESSUP CITY ENGINEER FEBRUARY 1930  
 SCALE 1 INCH=100 FEET

NOTE: Land to be condemned shown colored red.  
 Sht. 41  
 Superior Court Case No. 300208  
 Suit for Condemnation  
 Filed Apr. 3rd 1930  
 City of Los Angeles, Plaintiff  
 Vs  
 L. A. Railway Co. et al, Def.  
 Interlocutory judgment as per map,  
 rendered May 11th 1931. Judg. BK.  
 772-242.  
 Final judgment in favor of Piff.  
 as per map rendered Aug. 7th 1931.  
 D:84-237, O.R. 110/1-196.

