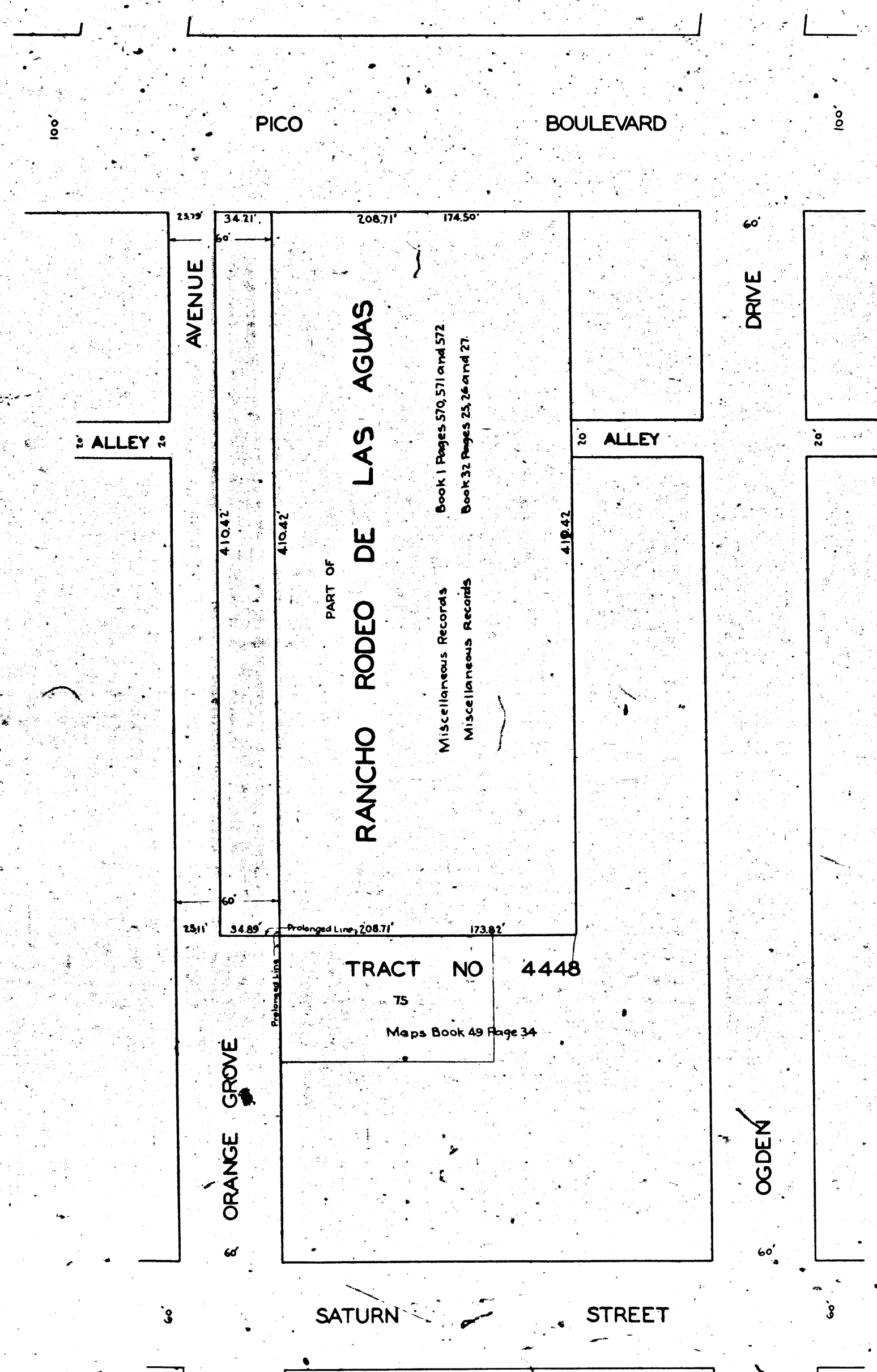


V-201
TETC-A



Superior Court Case No. 300531
 Suit for Condemnation
 Filed Apr. 8th 1930.
 City of Los Angeles, Plaintiff
 Vs
 Kate H. Whitworth et al., Def.
 Interlocutory judgment as
 per map, rendered Dec. 2nd
 1930. Judg. Bk. 767-214.
 Final judgment in favor of Plaintiff
 as per map, rendered July 8, 1931.

D: 84-204, O.R. 10992-179.

MAP
 SHOWING THE LAND TO BE CONDEMNED
 FOR THE WIDENING OF
ORANGE GROVE AVENUE
 ADJACENT TO THE EASTERLY LINE THEREOF
 BETWEEN
PICO BOULEVARD

AND
 A POINT APPROXIMATELY FOUR HUNDRED TEN (410)
 FEET SOUTHERLY FROM SAID PICO BOULEVARD
 IN THE CITY OF LOS ANGELES CALIF
 IN ACCORDANCE WITH ORDINANCES NOS. 65071 AND 65576
 J. J. JESSUP CITY ENGINEER JANUARY 1930
 SCALE 1 INCH=50 FEET

Sht. 22

NOTE: Land to be condemned shown colored red.

