

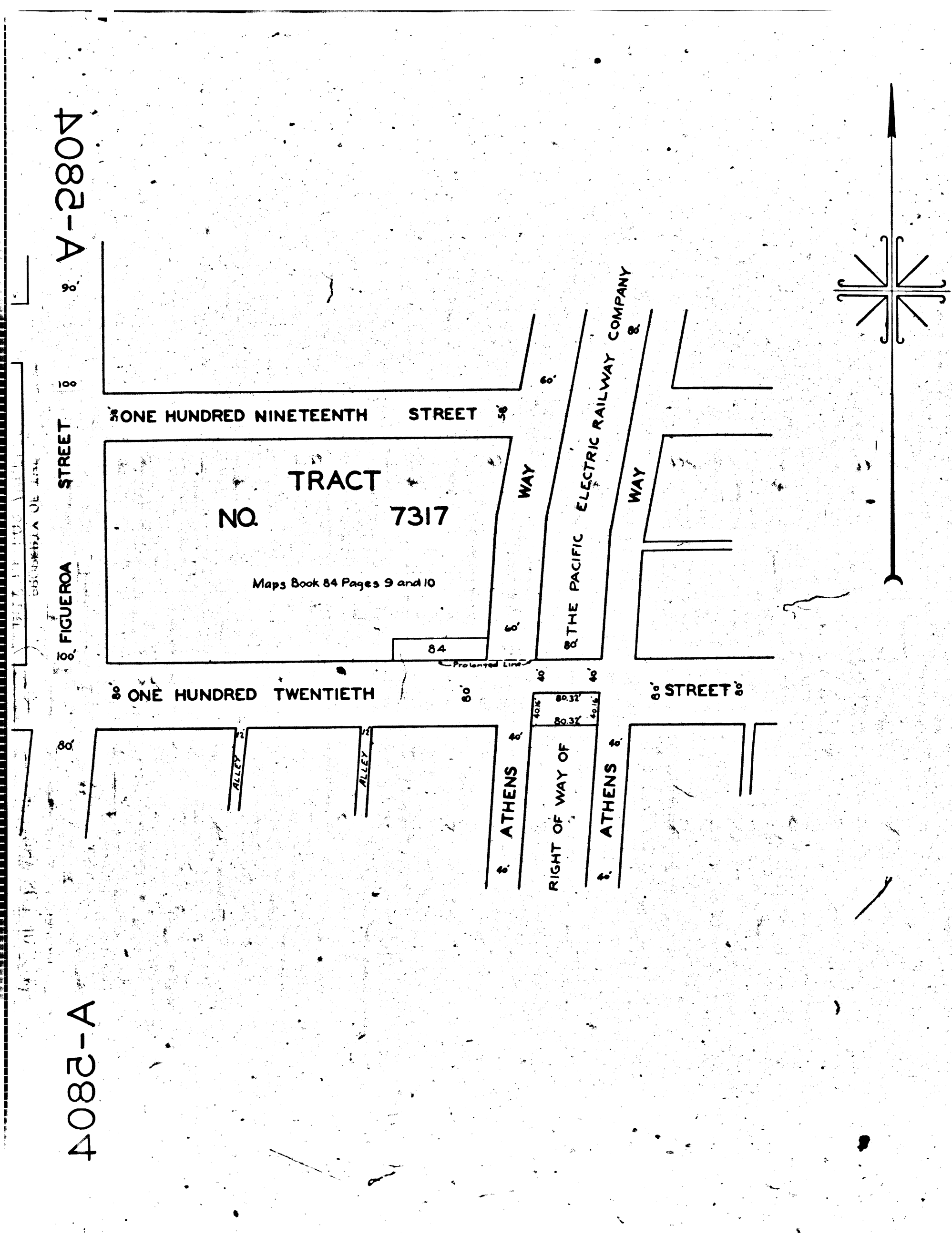
O&W - 120 TH ST & ATHENS WAY AC. PERY. R/W.  
FILE NO. 628-29 CHARGE NO. 92560

*Sht. 2C*  
*Superior Court Case No. 300983*  
*Suit for Condemnation*  
*Filed Apr. 15<sup>th</sup> 1930*  
*City of Los Angeles, Plaintiff*  
*Vs*  
*L.A. and Redondo Railway Co., Def.*  
*Interlocutory judgment as per*  
*map, rendered Dec. 9<sup>th</sup> 1930.*  
*Judg. Bk. 765-372.*  
*Final judgment in favor of Plaintiff as*  
*per map, rendered January 5, 1931.*

D:84-65, O.R.10623-170.

**MAP**  
SHOWING THE LAND TO BE CONDEMNED  
FOR THE WIDENING OF  
**ONE HUNDRED TWENTIETH STREET**  
ALONG THE SOUTHERLY LINE THEREOF  
BETWEEN  
THE EASTERLY AND WESTERLY ROADWAYS OF  
**ATHENS WAY**  
IN THE  
CITY OF LOS ANGELES CAL.  
IN ACCORDANCE WITH ORDINANCE NO. 65462  
J.J. JESSUP CITY ENGINEER FEBRUARY 1930  
SCALE 1 INCH=100 FEET

NOTE: Land to be condemned shown colored red.



4082-A

FIGUEROA STREET

40804

4082-A

A-2804