

MAP
 SHOWING LAND TO BE CONDEMNED FOR THE
 WIDENING AND LAYING OUT OF
SANTA BARBARA AVENUE

BETWEEN
 MAIN STREET AND A POINT 10 FEET WESTERLY OF MONETA AVENUE
 ALSO
 FOR THE ACQUIRING FOR PUBLIC STREET PURPOSES OF THE RIGHT OF WAY OF THE
LOS ANGELES RAILWAY CORPORATION
 LYING WITHIN SANTA BARBARA AVENUE
 BETWEEN
 FIGUEROA STREET AND A LINE 130.02 FEET WESTERLY FROM THIRD AVENUE

ALSO
 FOR THE WIDENING OF THE NORTHERLY ROADWAY OF
SANTA BARBARA AVENUE
 ADJACENT TO THE NORTHERLY LINE THEREOF
 BETWEEN NORMANDIE AVENUE AND DENKER AVENUE
 ALSO
 FOR THE WIDENING OF THE NORTHERLY AND SOUTHERLY ROADWAYS OF
SANTA BARBARA AVENUE
 BETWEEN
 THIRD AVENUE AND A LINE 130.02 FEET WESTERLY THEREFROM
 IN/ THE
CITY OF LOS ANGELES, CAL.

IN ACCORDANCE WITH ORDINANCES NOS. 64873 AND 85548
 JOHN J. JESSUP - CITY ENGINEER FEBRUARY, 1930



Land to be condemned shown colored red
 Dotted lines and dimensions show property holdings in those cases where they differ
 from recorded subdivisions
 The figures in circles indicate the parcel numbers as set forth in paragraph 22 of the complaint
 The bearing N. 28° 02' 00" E. of the Northwesterly line of Broadway as shown on Map No. 4754 Sheet 2
 was used as the basis of bearings shown upon this map

Sht. 67
 Sht. 24

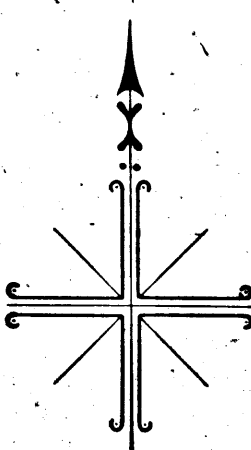
A-5803

28013
 SANTA BARBARA AVE.
 MAIN ST. TO 130' WESTERLY OF 3RD AVE.
 SHEET 1 OF 5 SHEETS

*Superior Court Case No. 302409
 Suit for Condemnation
 Filed May 12th 1930
 City of Los Angeles, Plaintiff
 Vs
 William J. Stadler et al, Def
 Interlocutory judgment
 parcels 14, 32, 33, 36, 37 and
 38, incl, rendered May 22
 1932. Judg. BK. 818-67.
 Interlocutory judgment
 parcels 1 to 13, incl, 15 to 31,
 33, 34, and 38 to 46, incl, re-
 rendered May 26, 1932. Judg. BK.
 818-95.
 Case dismissed Sept. 20, 1935*

C032-A

-A



HILL STREET

BROADWAY

AVENUE

ZOBELEIN'S MAIN STREET TRACT

Maps Book 5, Page 127

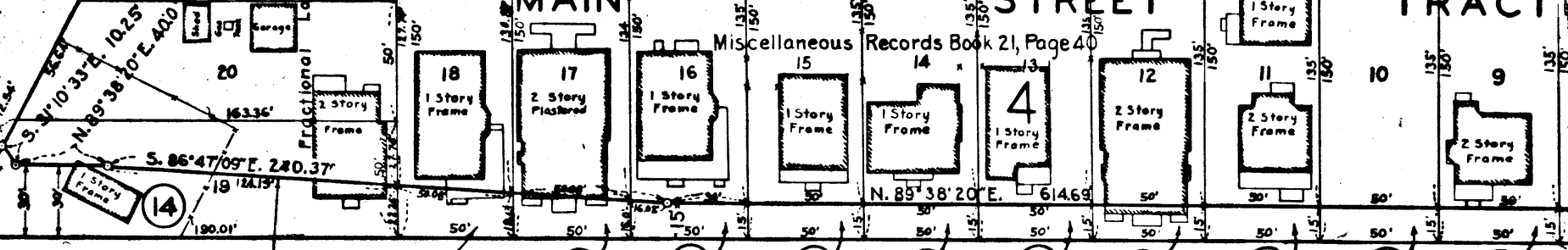
MAIN

ZOBELEIN'S STREET TRACT

TRACT

Being condemned under Ordinance No. 64651

C.F. 1746



N. 89° 38' 20" E.
Center Line

1399.63'

1468.91'

BOWEN MAIN AND ALLEY AND FIGUEROA STREET TRACT - NO. 2
Maps Book 7, Page 5

Being condemned under Ordinances Nos. 48059 ~ 48908 (New Series)

MONETA

MAIN

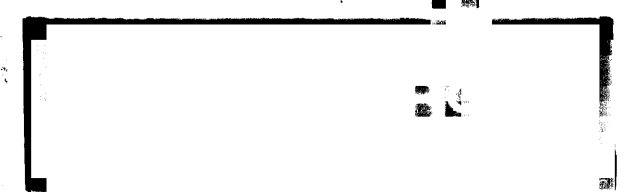
STREET A

BOULEVARD

TRACT

Maps Book 5, Pages 31 and 32

Moneta Ave. changed to Broadway Place - Ord. 68426.



21 3
SANTA BARBARA AVE
MAIN ST. TO 130' WESTERLY OF 3RD AVE.
SHEET 2 OF 5 SHEETS

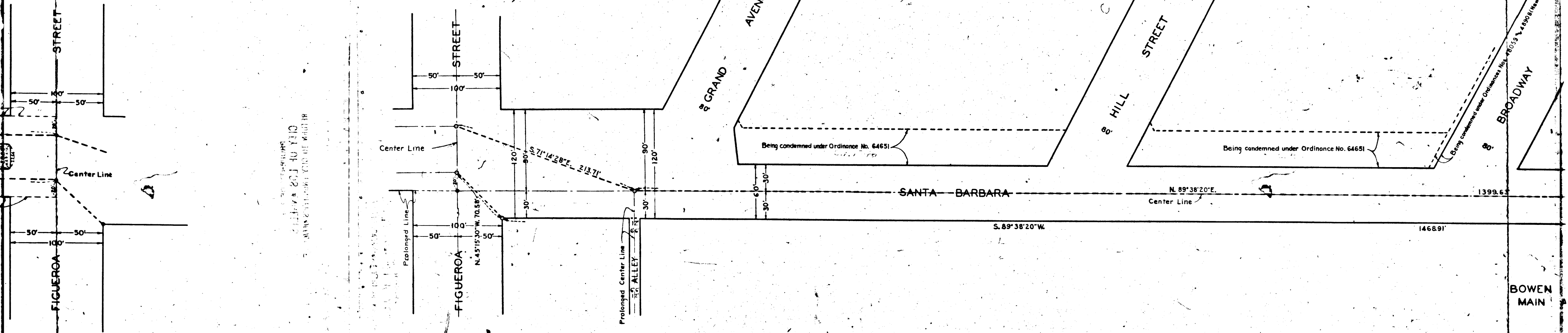
A-2803

A-2803

THE CITY ENGINEERS
OFFICE OF THE CITY ENGINEER
CITY OF SANTA BARBARA
CALIFORNIA

A-2803

A-2803



Being condemned under Ordinances Nos. 48059 & 48908

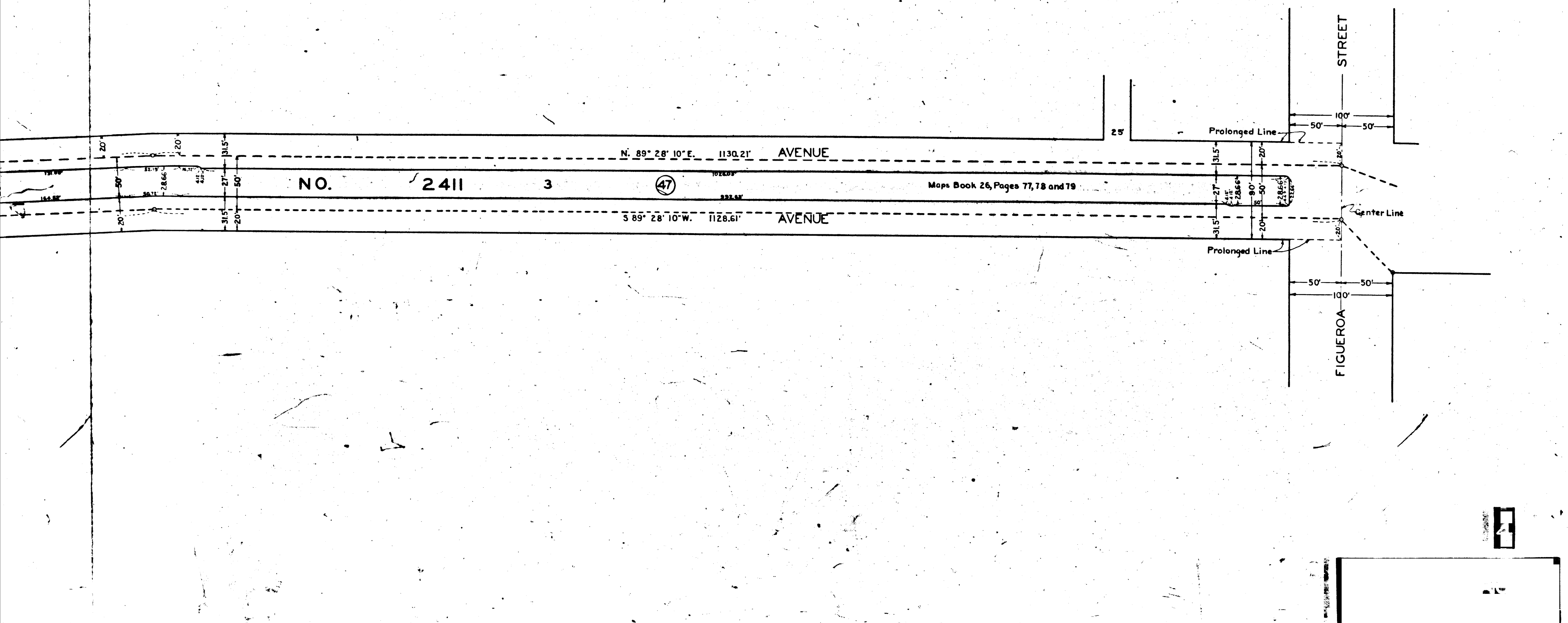
BOWEN
MAIN



SANTA BARBARA AVE
MAIN ST. TO 130' WESTERLY OF 3RD AVE.
SHEET 2 OF 5 SHEETS

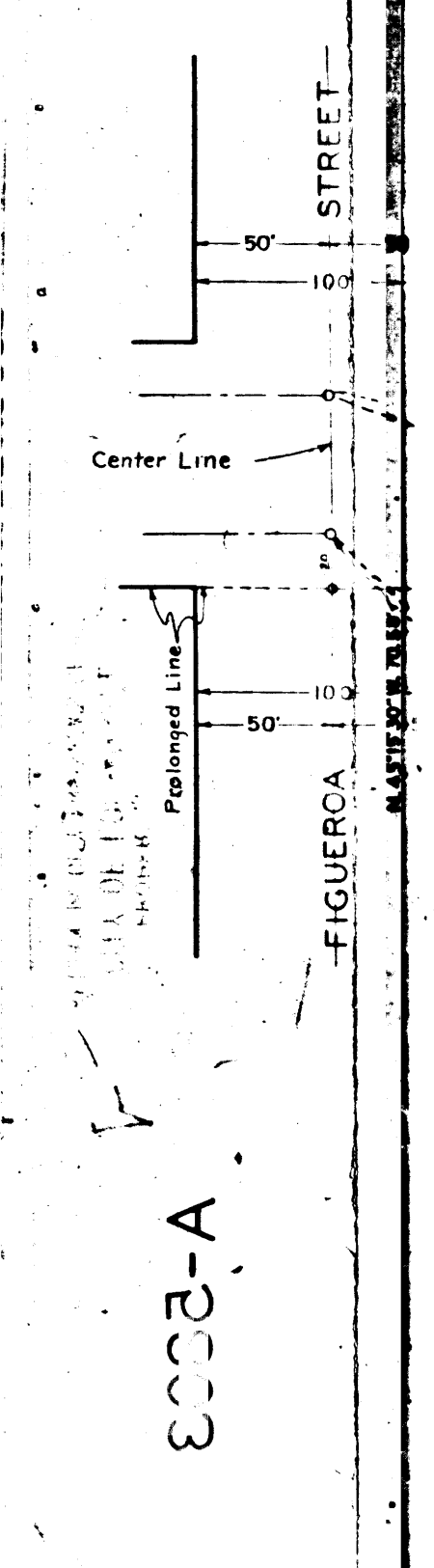
CC03-A

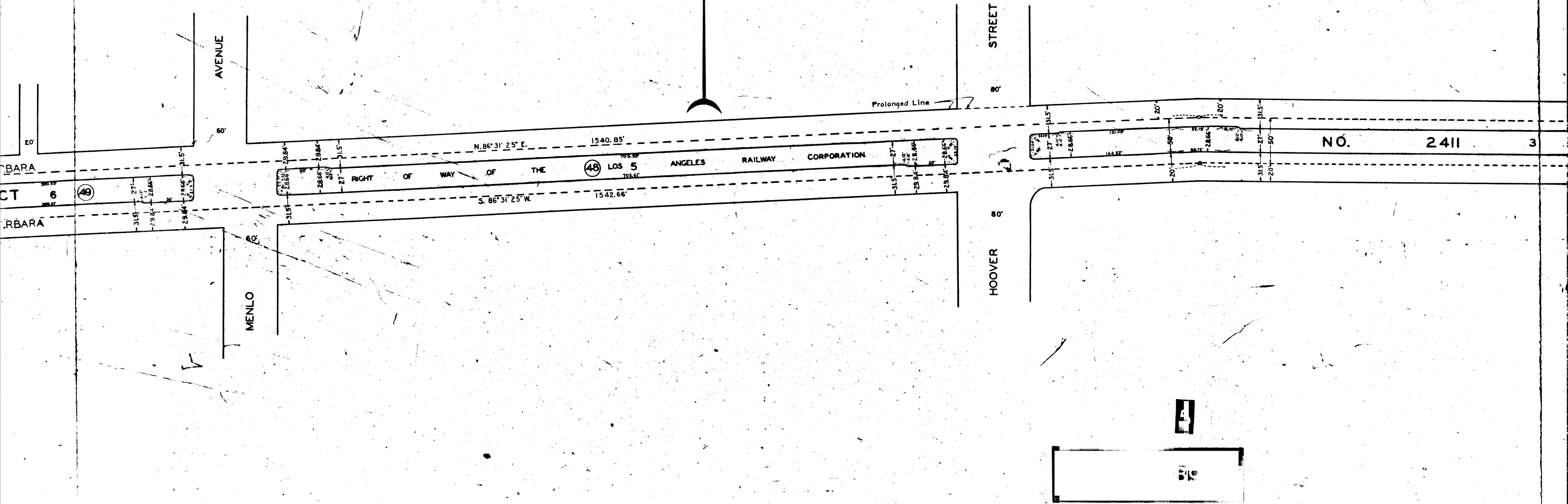
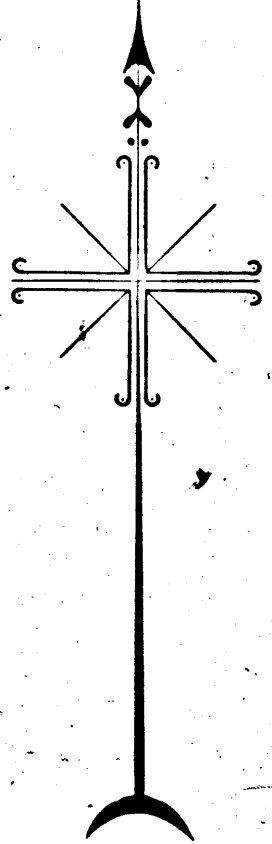
A-2803



CC03-A

A-2803





RIGHT OF WAY OF THE LOS ANGELES RAILWAY CORPORATION

NO. 2411 3

510

AVENUE

MENLO

HOOPER STREET

STREET

Prolonged Line

N. 86° 31' 25" E.

1540.85'

S. 86° 31' 25" W.

1542.66'

6 (49)

BARA

BARA

20'

60'

8'

8'

31.5'

31.5'

20'

20'

20'

20'

31.5'

31.5'

50'

50'

20'

20'

20'

20'

20'

20'

20'

20'

20'

20'

20'

20'

20'

20'

20'

20'

20'

20'

20'

20'

20'

20'

20'

20'

20'

20'

20'

20'

20'

20'

20'

20'

20'

20'

20'

20'

20'

20'

20'

20'

20'

20'

20'

20'

20'

20'

20'

20'

20'

20'

20'

20'

20'

20'

20'

20'

20'

20'

20'

20'

20'

20'

20'

20'

20'

20'

20'

20'

20'

20'

20'

20'

20'

20'

20'

20'

20'

20'

20'

20'

20'

20'

20'

20'

20'

20'

20'

20'

20'

20'

20'

20'

20'

20'

20'

20'

20'

20'

20'

20'

20'

20'

20'

20'

20'

20'

20'

20'

20'

20'

20'

20'

20'

20'

20'

20'

20'

20'

20'

20'

20'

20'

20'

20'

20'

20'

20'

20'

20'

20'

20'

20'

20'

20'

20'

20'

20'

20'

20'

20'

20'

20'

20'

20'

20'

20'

20'

20'

20'

20'

20'

20'

20'

20'

20'

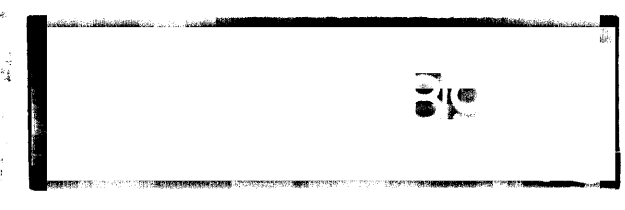
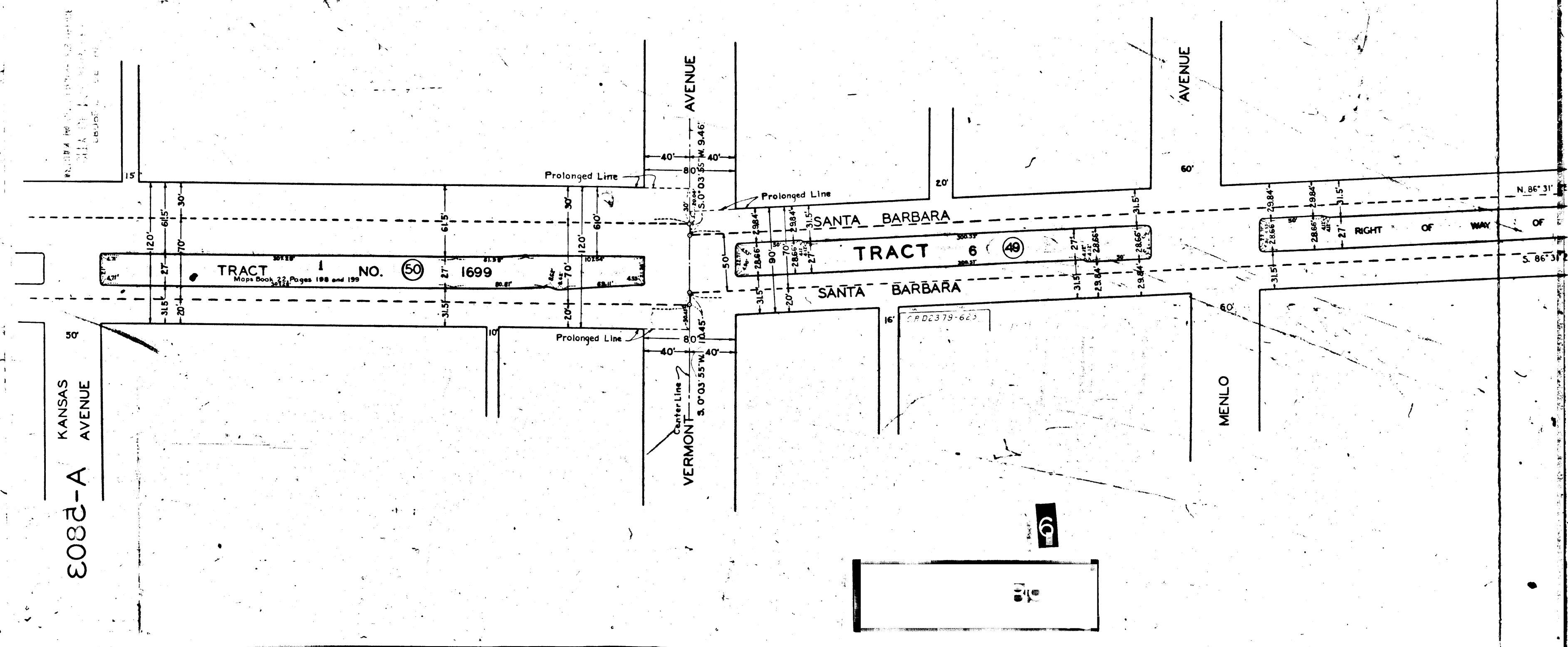
7003
SANTA BARBARA AVE
MAIN ST TO 130' WESTERLY OF 3RD AVE.
SHEET 3 OF 5 SHEETS

003-A

003-A

003-A

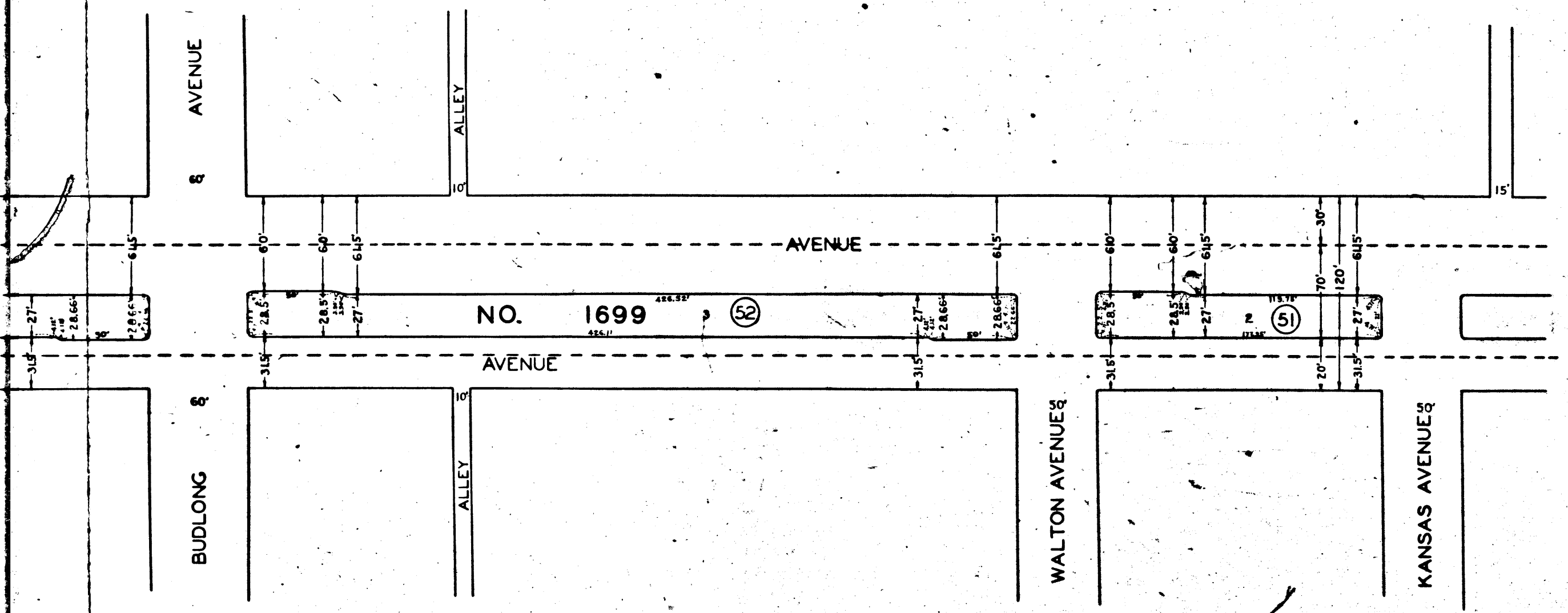
003-A



28013
SANTA BARBARA AVE.
MAIN ST TO 130' WESTERLY OF 3RD AVE.
SHEET 3 OF 5 SHEETS

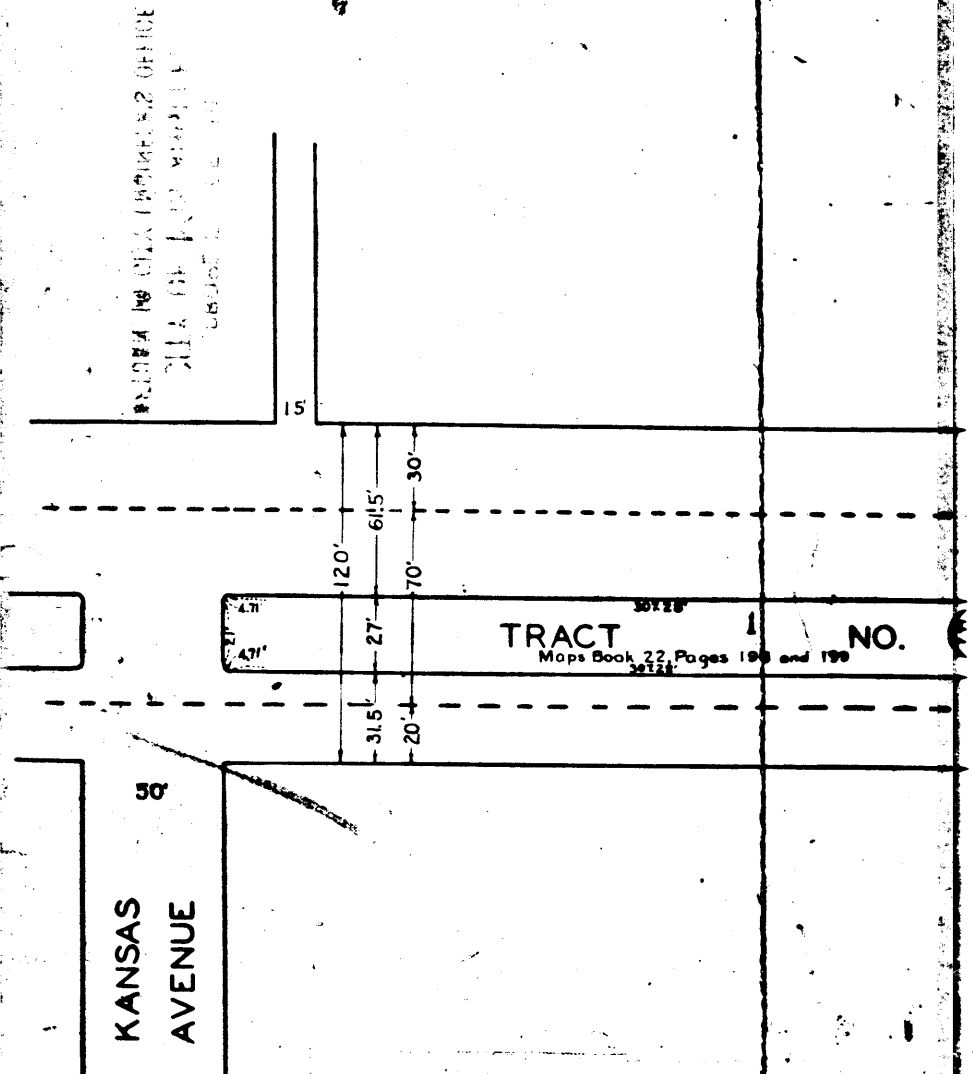
CC3-A

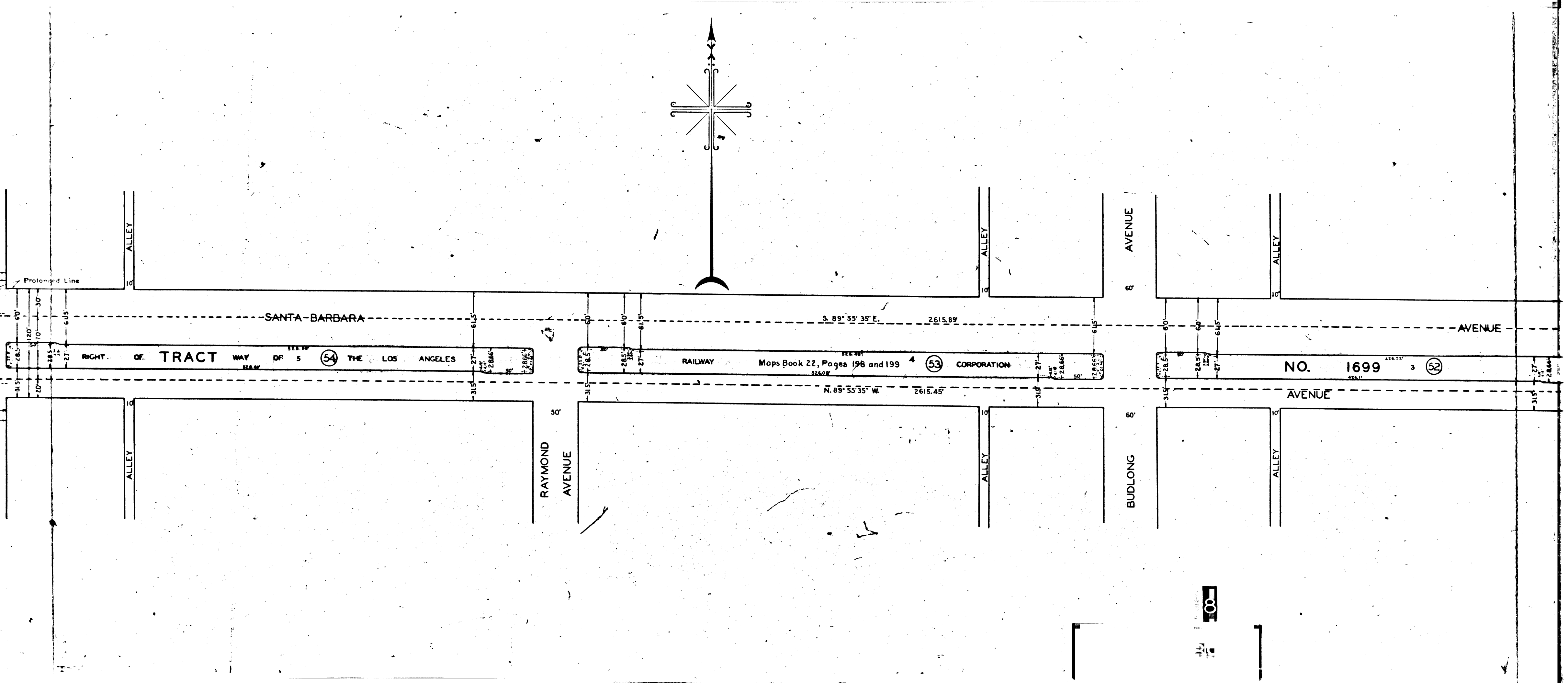
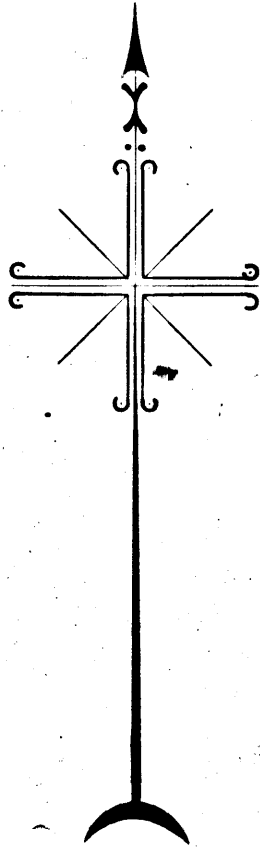
A-2803



CC3-A

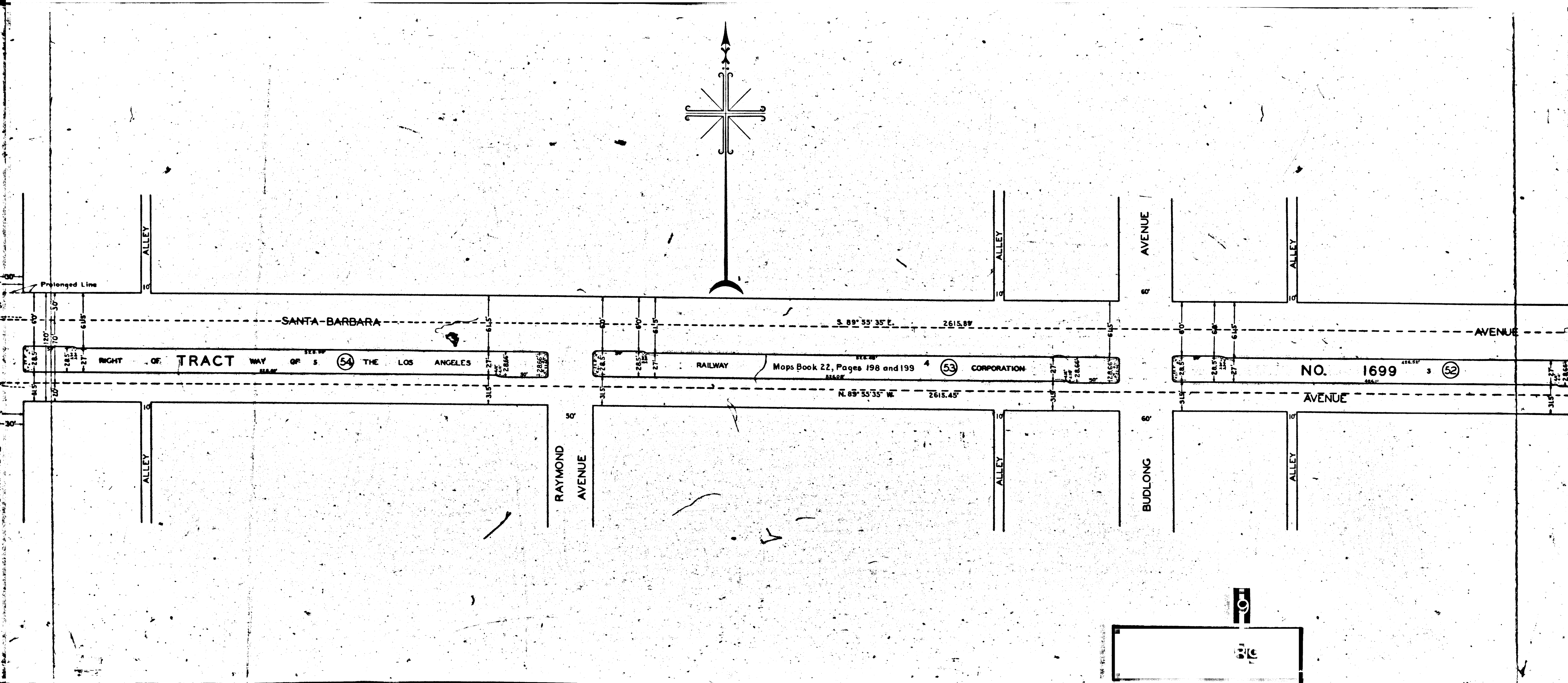
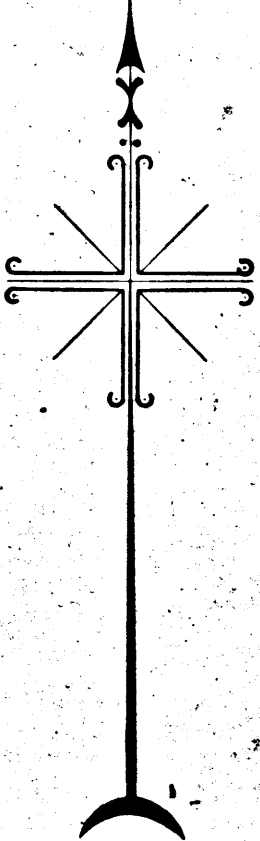
A-2803





100

100



Prolonged Line

SANTA-BARBARA

S. 89° 55' 35" E. 2615.89'

AVENUE

RIGHT OF TRACT WAY OF 5 THE LOS ANGELES

RAILWAY Maps Book 22, Pages 198 and 199 CORPORATION

NO. 1699

N. 85° 55' 35" W. 2615.45'

AVENUE

ALLEY

ALLEY

AVENUE

ALLEY

ALLEY

RAYMOND AVENUE

ALLEY

BUDLONG AVENUE

ALLEY

10

10

A AVE.
OF 3RD AVE.
ETS

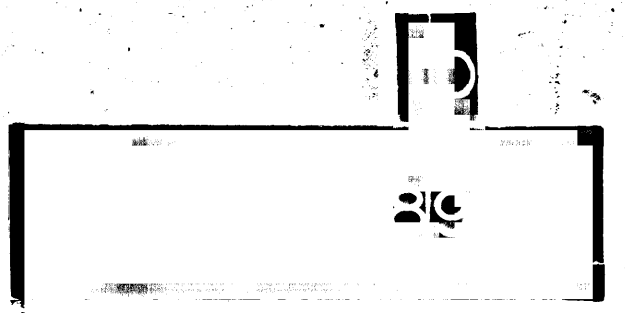
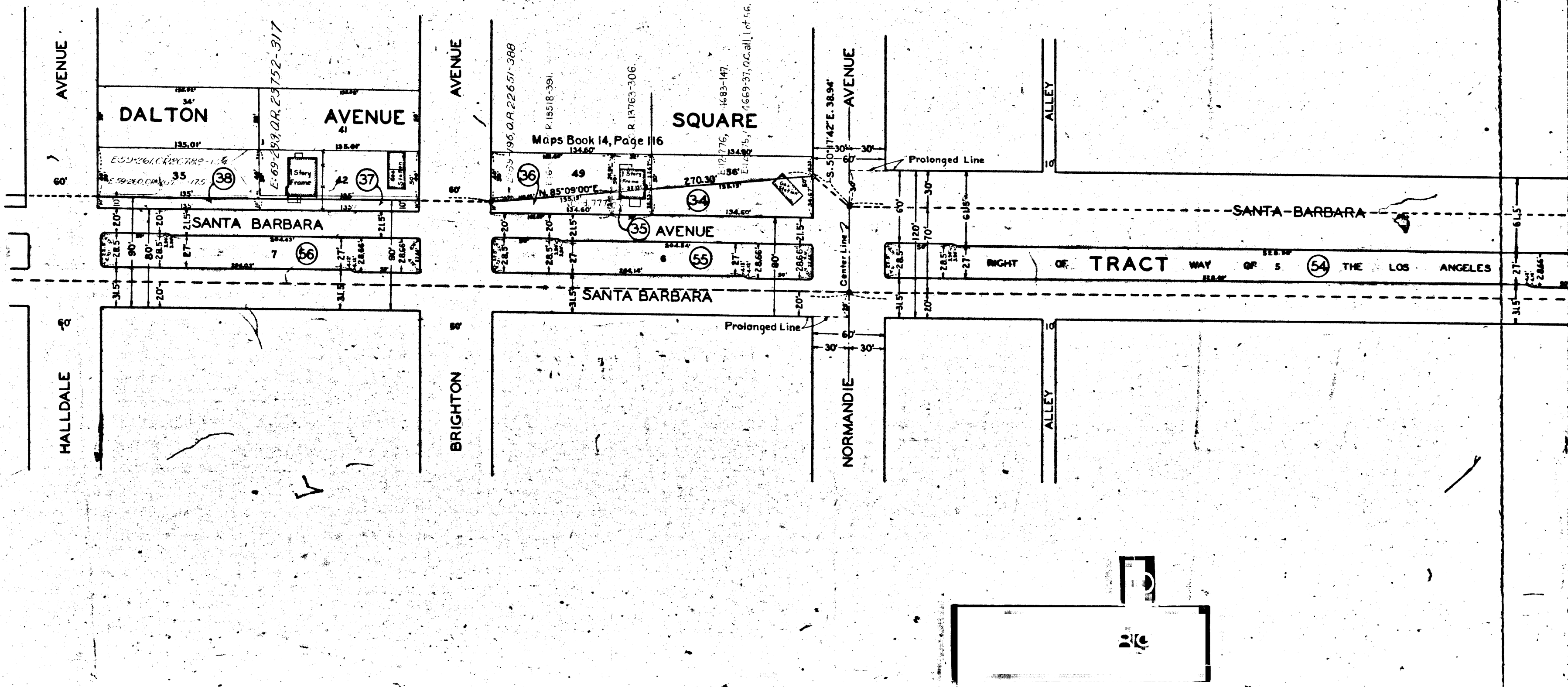
0003-A

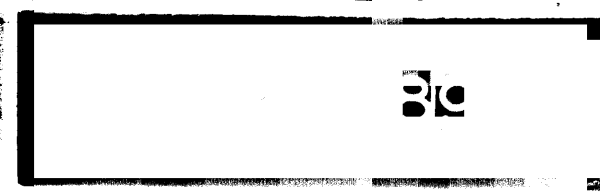
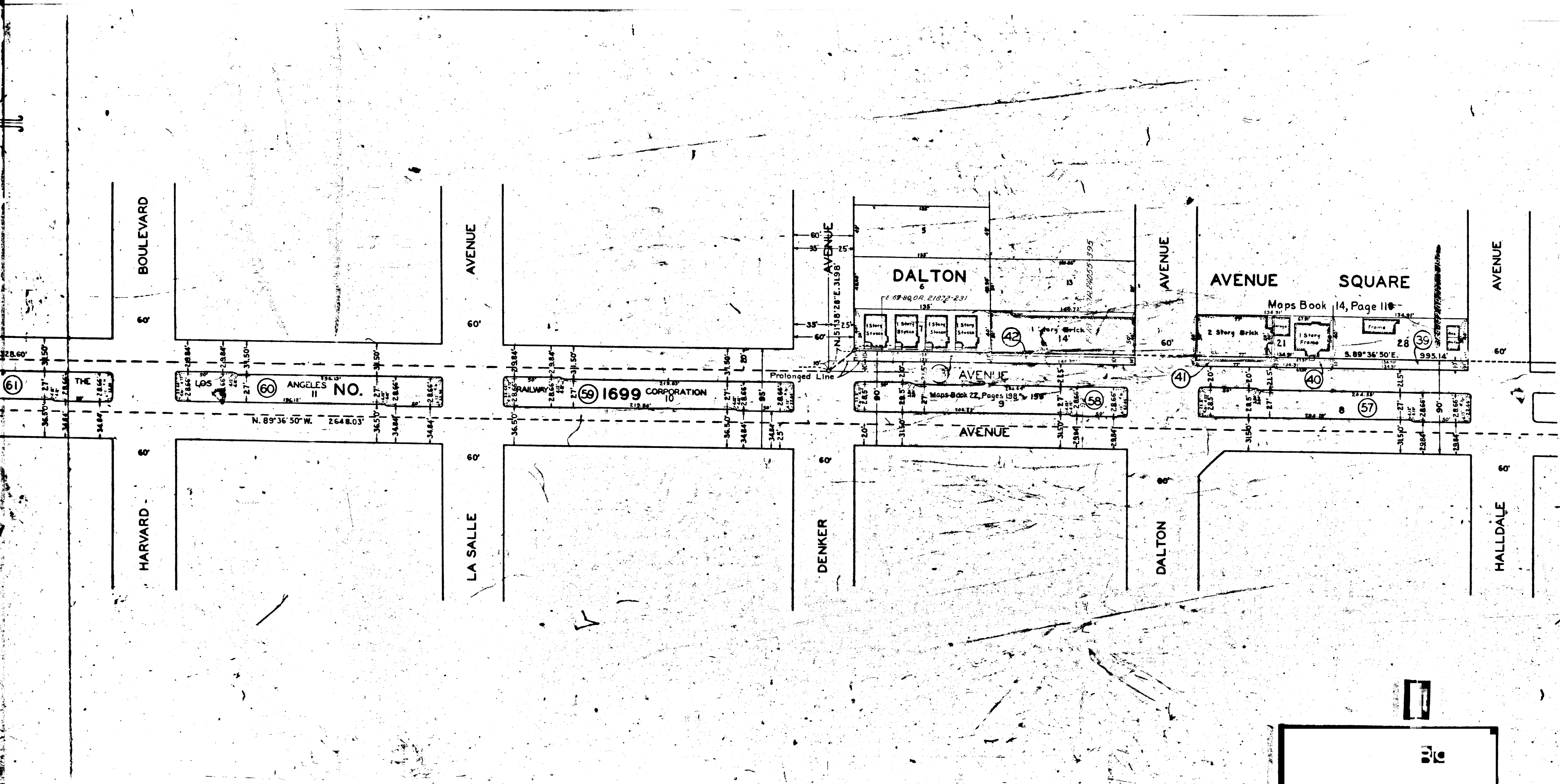
A-2803

0082-A

A-2803

REPLA 18 0124 ENGINEERING SERVICE
CITY OF LOS ANGELES
COURTESY





PLACE

SANTA BARBARA TRACT

Center Line AVENUE

BOULEVARD

BOULEVARD

AVENUE

SANTA BARBARA

ALLEY

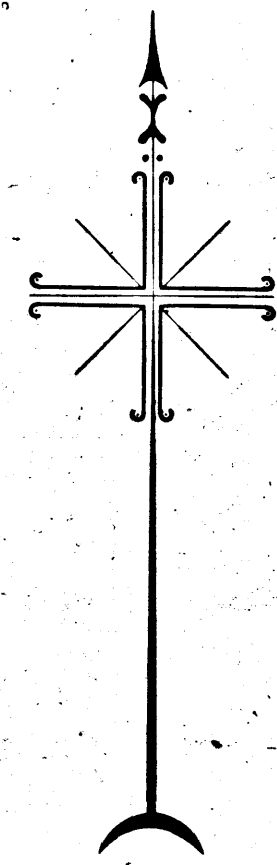
Prolonged Line

WESTERN

HOBART

HARVARD

LA SALLE



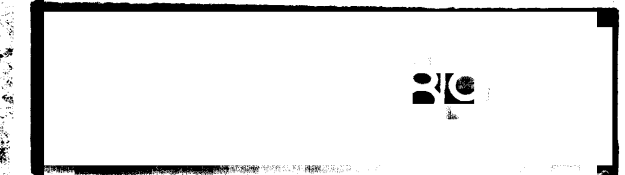
14 (63)

RIGHT 13 (62)

OF 12 (61)

ANGELES NO. 60

16 (58)



28013
SANTA BARBARA AVE.
MAIN ST. TO 130' WESTERLY OF 3RD AVE.
SHEET 5 OF 5 SHEETS

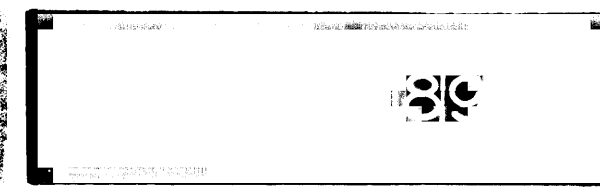
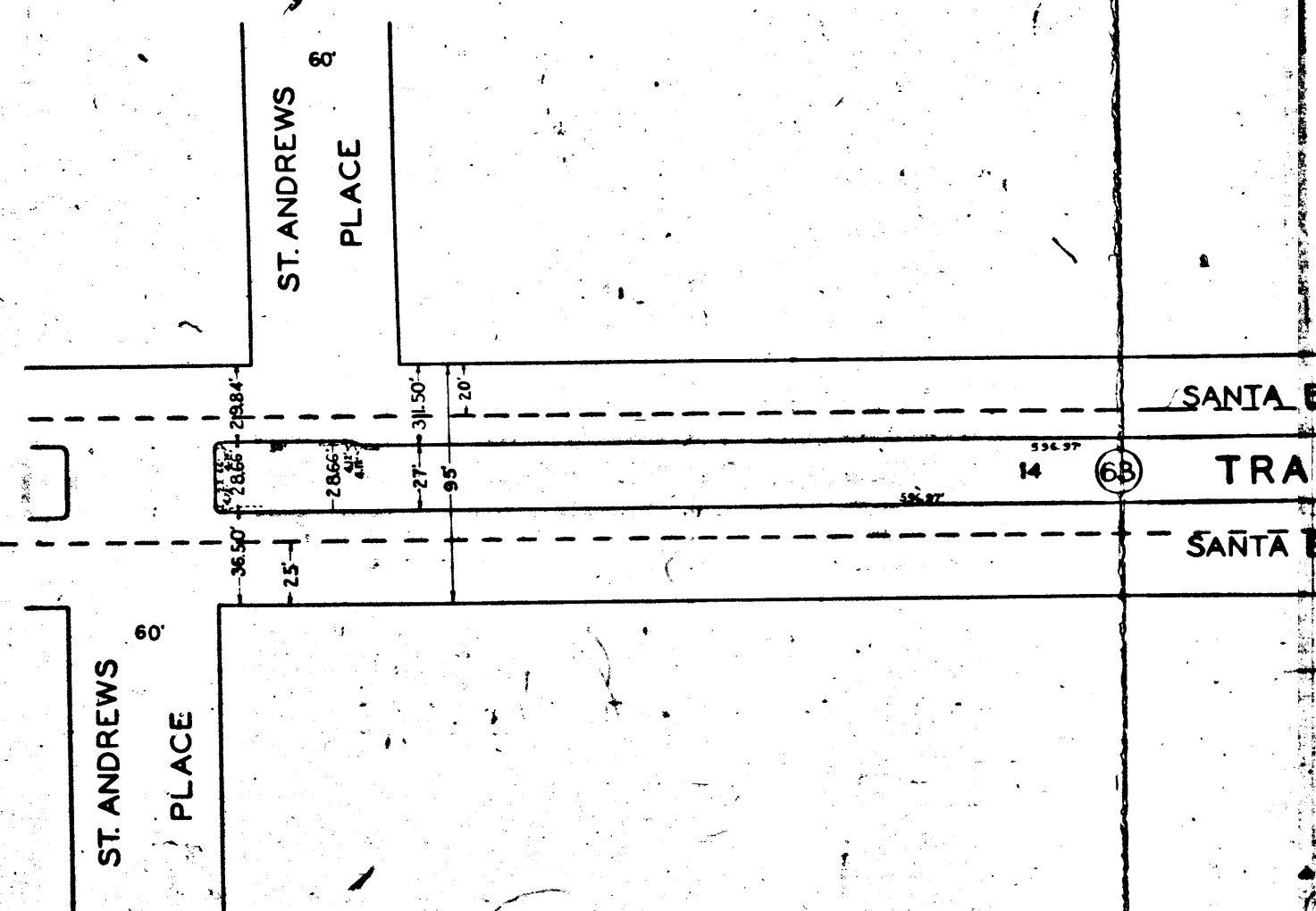
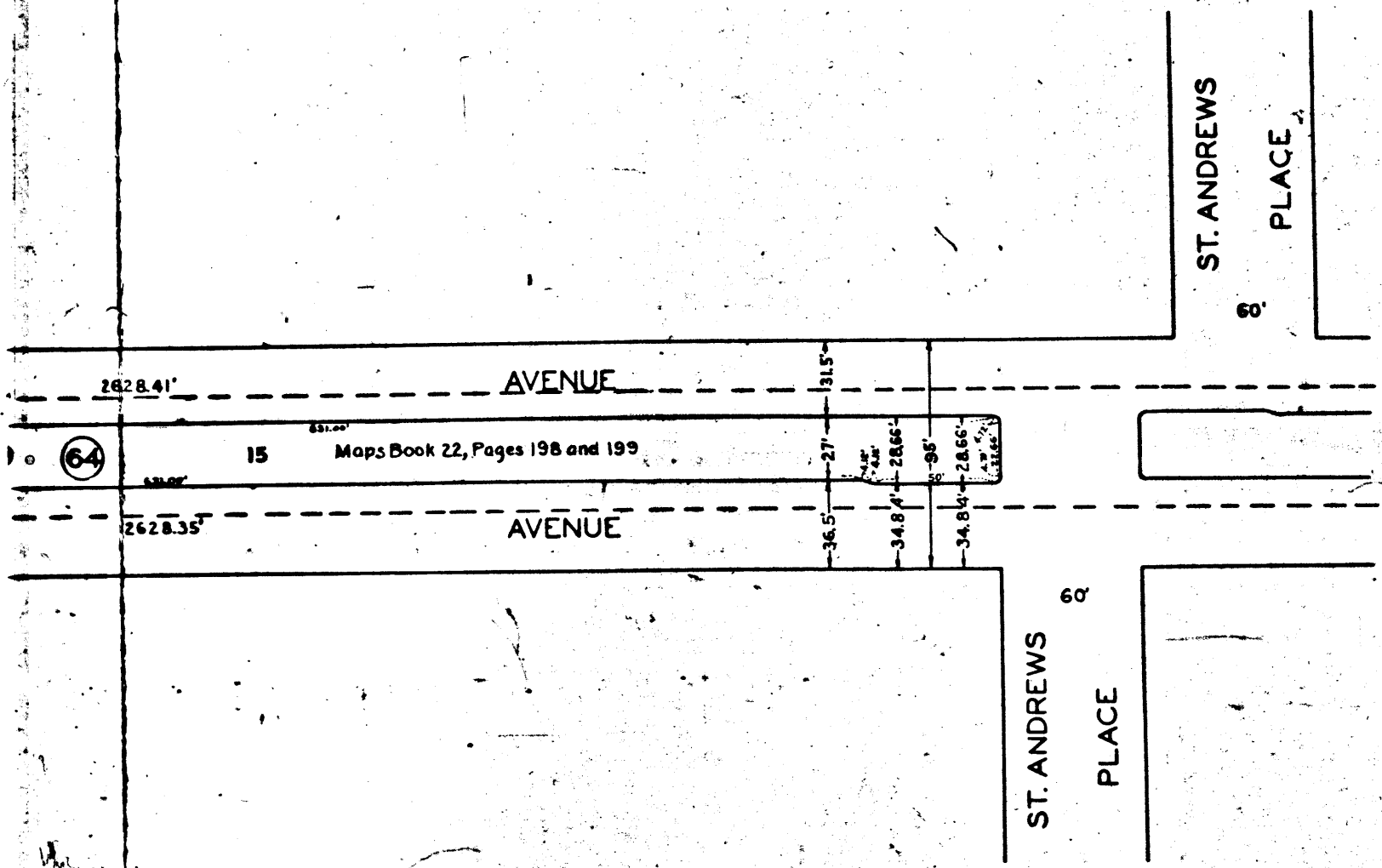
A-2803

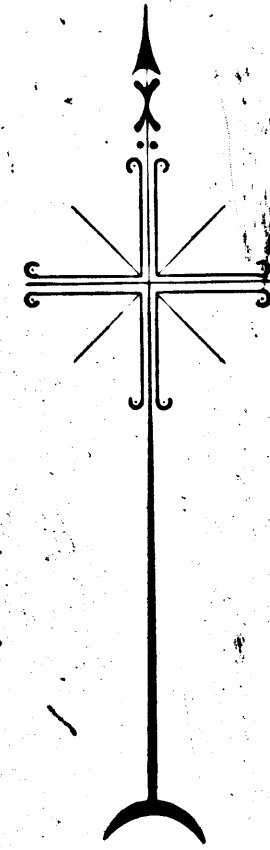
A-2803

A-2803

A-2803

FORM TO CITY ENGINEER'S OFFICE
CITY OF SANTA BARBARA





WILTON PLACE

GRAMERCY PLACE

RIGHT TRACT OF WAY OF (65) IN THE LOS ANGELES NO.

RAILWAY CORPORATION 1699 (64) 15 Maps Book 22, Pages 198 and 199

N. 89° 50' 55" E. 2628.41' AVENUE

S. 89° 50' 55" W. 2628.35' AVENUE

GRAMERCY PLACE

ST. ANDREWS PLACE

