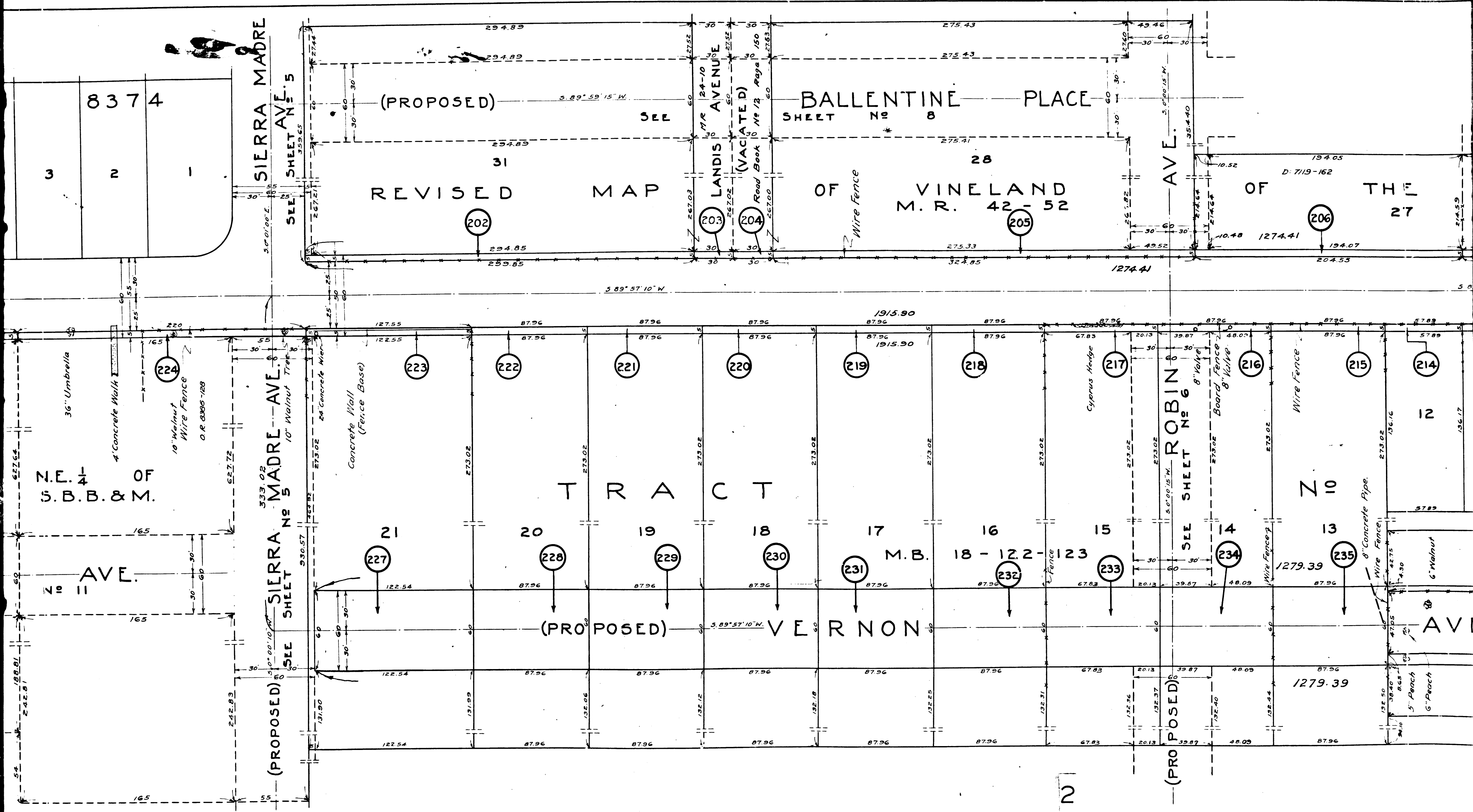


C.F. 1790 2-3

SCALE IN FEET
 0 20 40 60 80 100

SHEET 9 OF 15 SHEETS
 A&I DISTRICT NO. 222
 Drawn by Adams & Ellis Eng'rs 10/11/22
 Traced by S.K. Payne 10/25/22
 Checked by 5/2/23

DISTRICT NO. 222
 SHEET 9 OF 15 SHEETS
 A&I DISTRICT NO. 222



BALLENTINE PLACE
SHEET NO 8

REVISED MAP OF VINELAND
M. R. 42-52

TRACT

(PROPOSED) VERNON AVENUE

SEE SHEET NO 6

SIERRA MADRE AVE. NO 5
SEE SHEET NO 5

2

C.F. 1790 2-3

E. 1/4 OF B.B.&M.

5" Fig

5" Fig Garage

Frame House
Concrete Curb
2" Quince

LA RICA AVE.

5.0° 01' 30" E.
Road Book No 17 Page 201

TRACT

M. B. 115 - 33 No 8374

11 10 9 8 7 6 5 4 3 2 1

SIERRA MADRE AVE. 5

(PROPOSED)

REVISED

202

STREET

CLARK

421.49
421.49

225

36" Umbrella

4" Concrete Walk

224

10" Walnut Wire Fence
O.R. 0306-128

PORTION OF FRACTIONAL W. 1/2 OF N.E. 1/4 OF SECTION 18 T. 1 S. R. 10 W. S.B.B. & M.

(PROPOSED) PALM AVE. SEE SHEET No 11

(PROPOSED) MONTE VISTA AVE. SEE SHEET No 5

(PROPOSED) SIERRA MADRE AVE. 5 SEE SHEET No 5

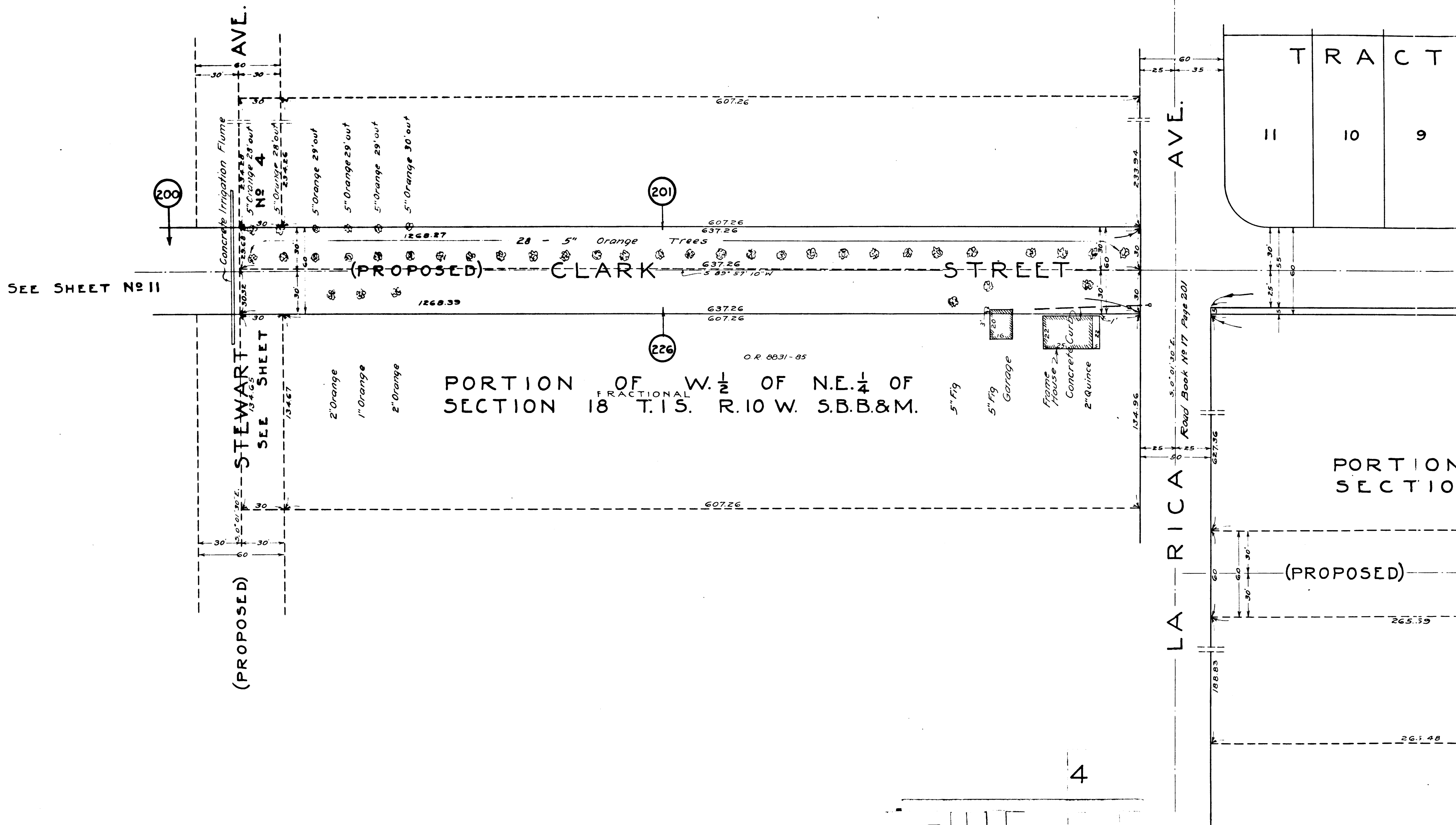
21

227

20

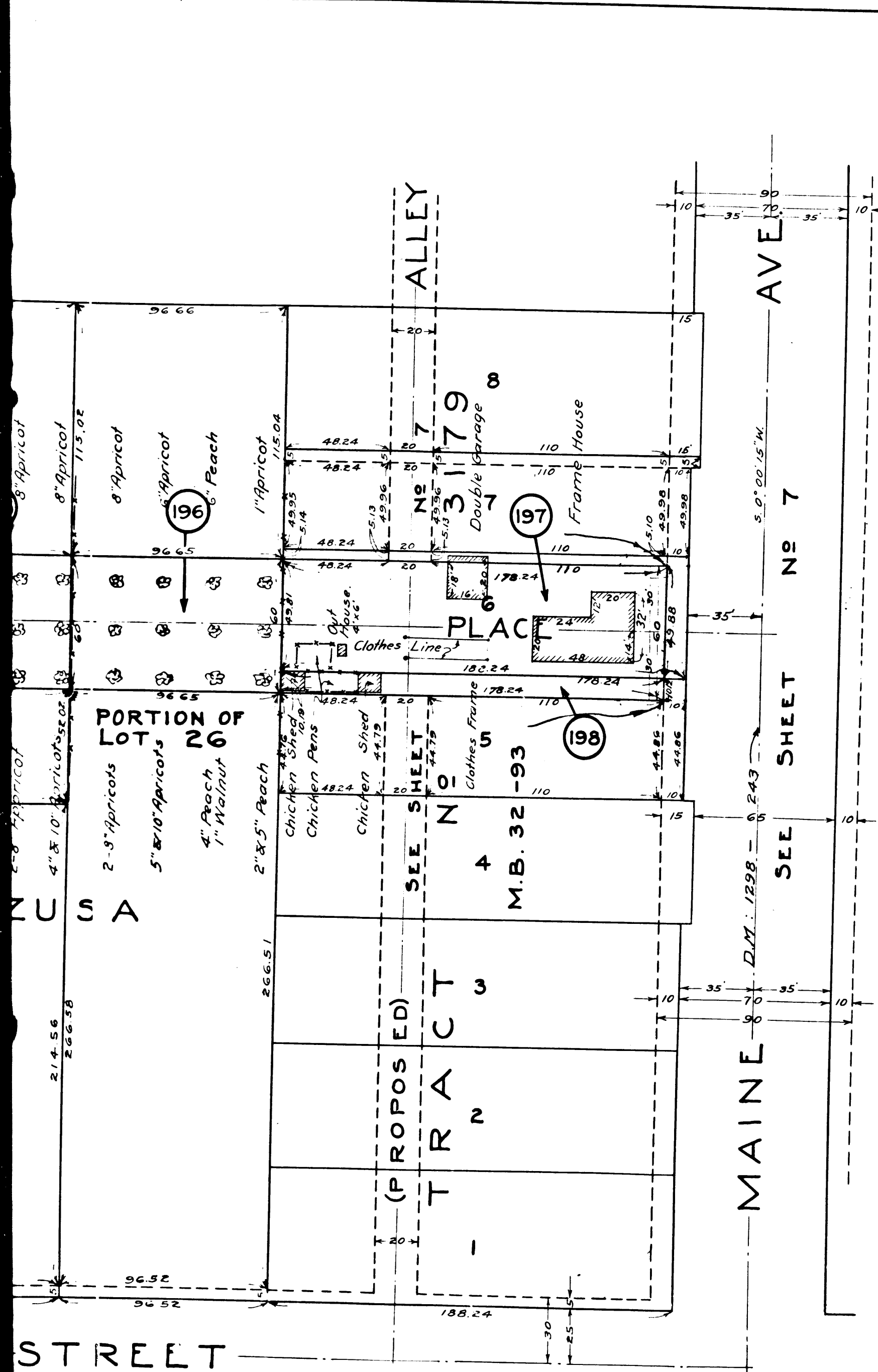
228

(PRO)



C.F. 1790 2-3

4



STREET

US A

PORTION OF LOT 26

ALLEY

MAINE AVE

SEE SHEET NO 7

SEE SHEET NO 4

SEE SHEET NO 5

SEE SHEET NO 6

SEE SHEET NO 7

SEE SHEET NO 8

SEE SHEET NO 9

SEE SHEET NO 10

SEE SHEET NO 11

SEE SHEET NO 12

SEE SHEET NO 13

SEE SHEET NO 14

SEE SHEET NO 15

SEE SHEET NO 16

SEE SHEET NO 17

SEE SHEET NO 18

SEE SHEET NO 19

SEE SHEET NO 20

SEE SHEET NO 21

SEE SHEET NO 22

SEE SHEET NO 23

SEE SHEET NO 24

SEE SHEET NO 25

SEE SHEET NO 26

SEE SHEET NO 27

SEE SHEET NO 28

SEE SHEET NO 29

SEE SHEET NO 30

SEE SHEET NO 31

SEE SHEET NO 32

SEE SHEET NO 33

SEE SHEET NO 34

SEE SHEET NO 35

SEE SHEET NO 36

SEE SHEET NO 37

SEE SHEET NO 38

SEE SHEET NO 39

SEE SHEET NO 40

SEE SHEET NO 41

SEE SHEET NO 42

SEE SHEET NO 43

SEE SHEET NO 44

SEE SHEET NO 45

SEE SHEET NO 46

SEE SHEET NO 47

SEE SHEET NO 48

SEE SHEET NO 49

SEE SHEET NO 50

SEE SHEET NO 51

SEE SHEET NO 52

SEE SHEET NO 53

SEE SHEET NO 54

SEE SHEET NO 55

SEE SHEET NO 56

SEE SHEET NO 57

SEE SHEET NO 58

SEE SHEET NO 59

SEE SHEET NO 60

SEE SHEET NO 61

SEE SHEET NO 62

SEE SHEET NO 63

SEE SHEET NO 64

SEE SHEET NO 65

SEE SHEET NO 66

SEE SHEET NO 67

SEE SHEET NO 68

SEE SHEET NO 69

SEE SHEET NO 70

SEE SHEET NO 71

SEE SHEET NO 72

SEE SHEET NO 73

SEE SHEET NO 74

SEE SHEET NO 75

SEE SHEET NO 76

SEE SHEET NO 77

SEE SHEET NO 78

SEE SHEET NO 79

SEE SHEET NO 80

SEE SHEET NO 81

SEE SHEET NO 82

SEE SHEET NO 83

SEE SHEET NO 84

SEE SHEET NO 85

SEE SHEET NO 86

SEE SHEET NO 87

SEE SHEET NO 88

SEE SHEET NO 89

SEE SHEET NO 90

SEE SHEET NO 91

SEE SHEET NO 92

SEE SHEET NO 93

SEE SHEET NO 94

SEE SHEET NO 95

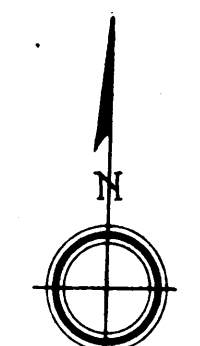
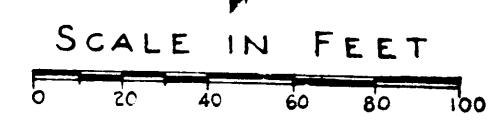
SEE SHEET NO 96

SEE SHEET NO 97

SEE SHEET NO 98

SEE SHEET NO 99

SEE SHEET NO 100



SHEET 8 OF 15 SHEETS

A.&I. DISTRICT No 222		
Drawn by	Adams & Ellis Engrs	10/14/20
Traced by	S.K. Payzant	11/24/20
Checked by		5/13/21

BAFFLELINE PLACES
A & I DISTRICT, No 222

CONDENSATION
Sheet 8 of 15

C.F. 1790 2-3

5

SEE SHEET No 11

(PROPOSED)

SEE SHEET

Concrete Irrigation Flume

5" Orange 28' out

5" Orange 28' out

5" Orange 29' out

5" Orange 29' out

5" Orange 29' out

5" Orange 30' out

5" Orange 30' out

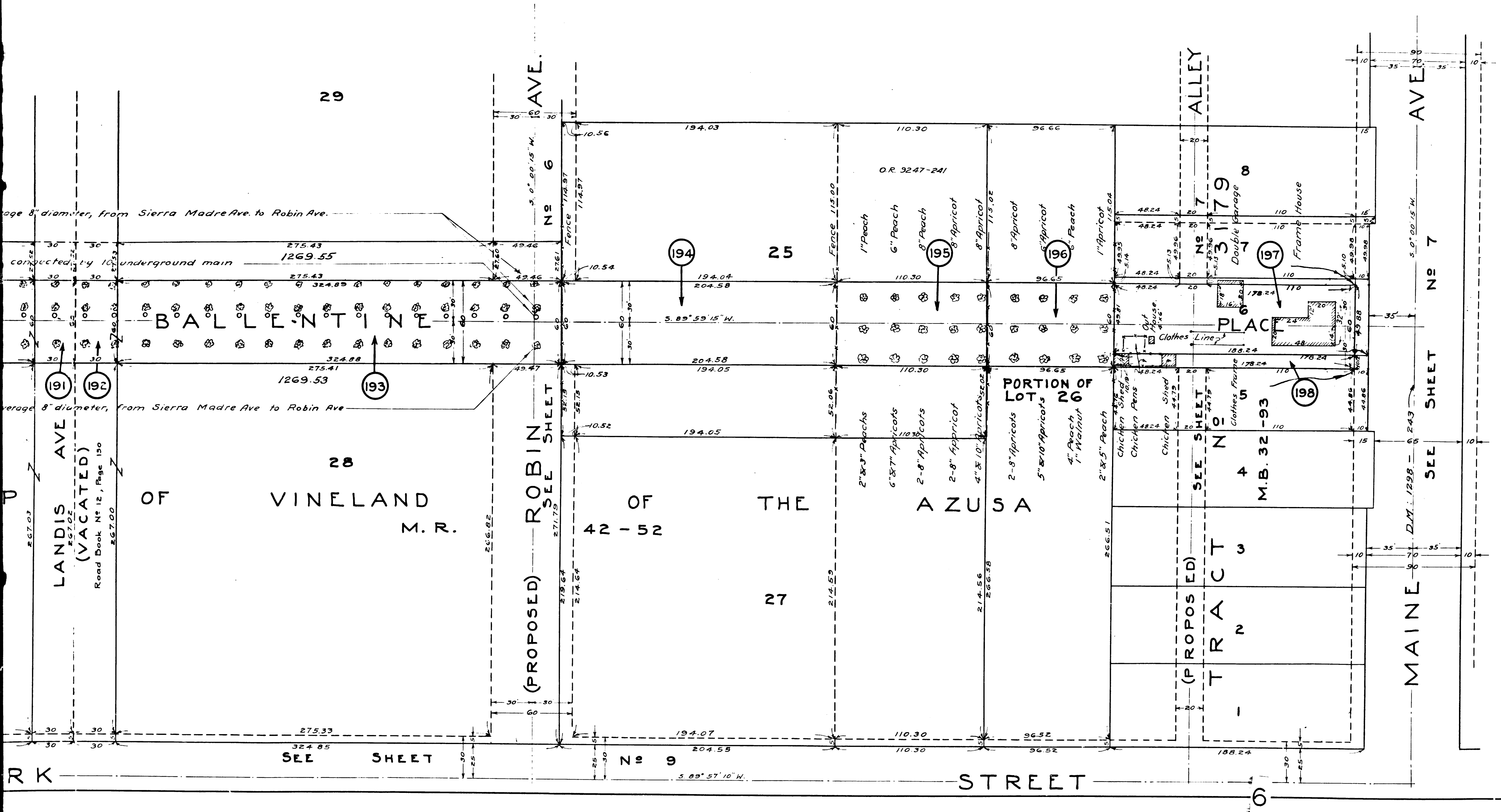
POR SEC

1268.39

(PROPOSED)

AVE.

200



LANDIS AVE
(VACATED)
Road Book No 12, Page 130

OF
VINELAND
M. R.

(PROPOSED) ROBIN SHEET

OF
42 - 52

THE

AZUSA

(PROPOSED)
TRACT

MAINE

SEE SHEET

No 9

STREET

6

SEE

SHEET

No 7

C.F. 1790 2-3

NORTH 1/2 J.S. Beal 4.028 Acs
OF BLOCK 20
OF VINELAND
M.R. 66-43

115 - 33

16	17	18	19	20	21	22
				83	74	
No						

PLACE
Easterly Prolongation of the Northerly Line of Ballentine Place

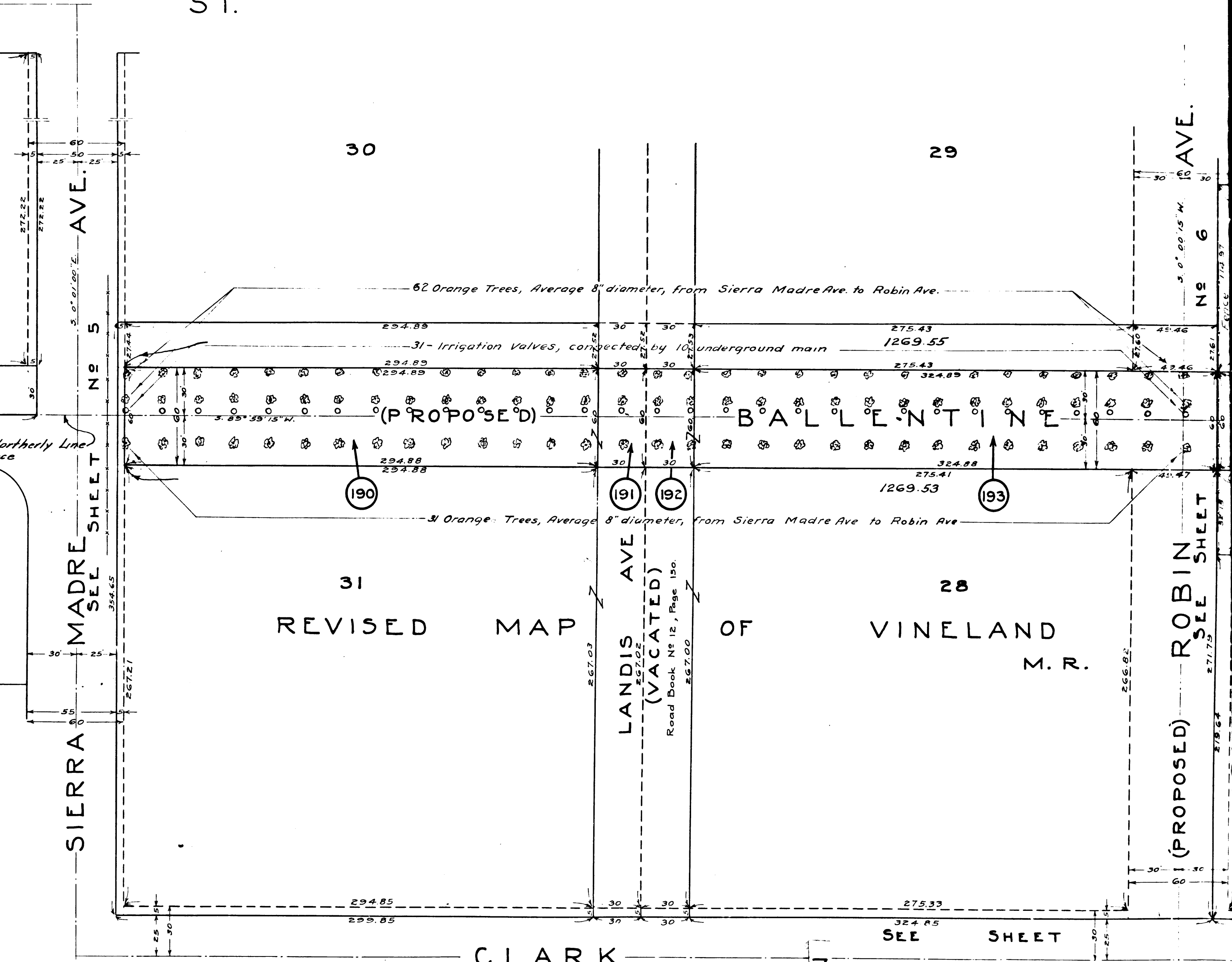
SIERRA MADRE AVE. SEE SHEET NO 5

ST.

REVISED MAP OF VINELAND M.R.

LANDIS AVE (VACATED)
Road Book No 12, Page 150.

ROBIN AVE. SEE SHEET NO 6



CLARK

SEE SHEET

C.F. 1790 2-3

LOS ANGELES

5.89° 59' 15" W.

OF W. 1/2 OF NE. 1/4 OF FRACTIONAL SECTION 18
T. 1 S. R. 10 W. S. B. B. & M.

NORTH 1/2 J.S. Beal 4.028 Acs
REPLAT OF BLOCK 20
OF VINELAND
M. R. 66-43

AVE.
LA RICA

AVE.
SIERRA

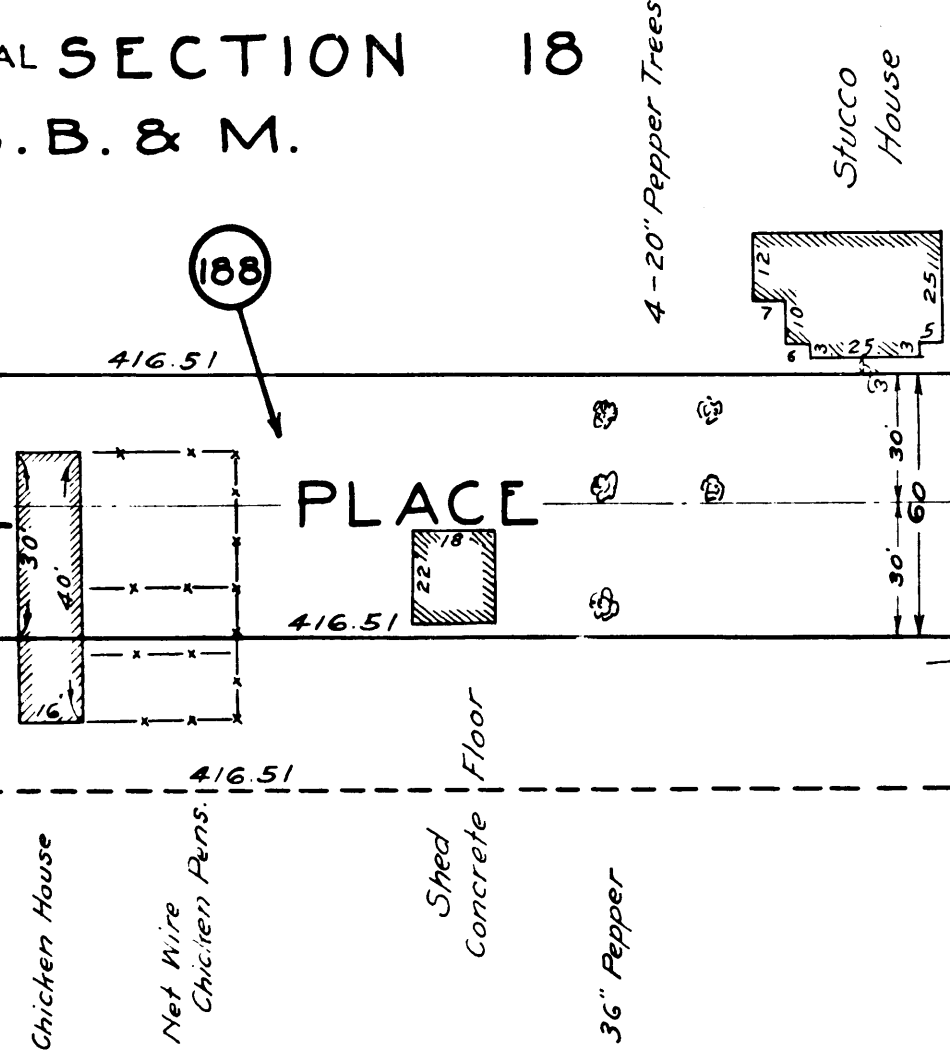
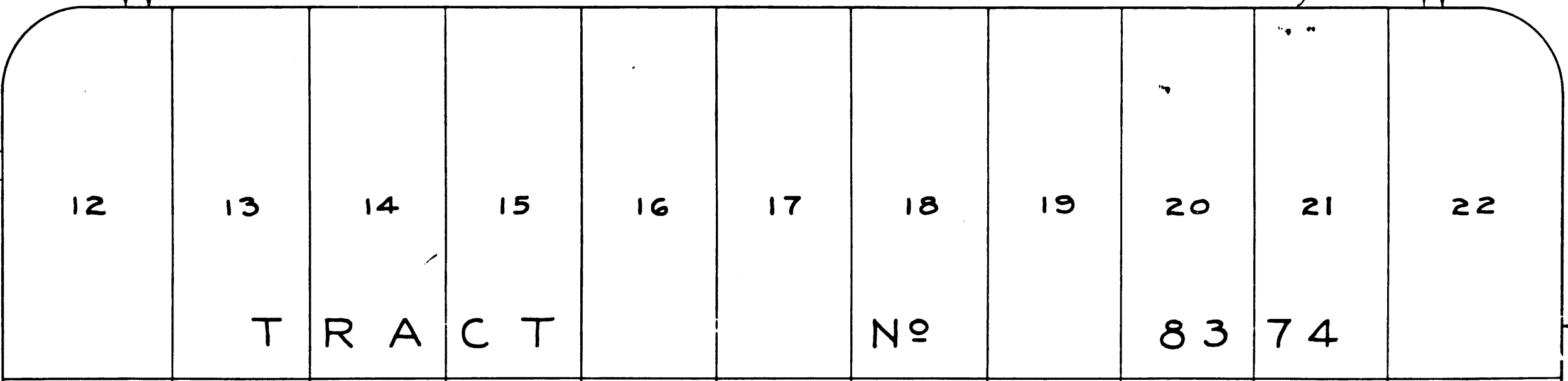
5.0° 01' 30" E.
Road Book No 17 Page 201

5.0° 01' 30" E.
No 5

BALLENTINE PLACE

BALLENTINE PLACE

Easterly Prolongation of the Northerly Line of Ballentine Place



188

189

8

C.F. 1790

2-3

SIERRA MADRE SHEET No 5

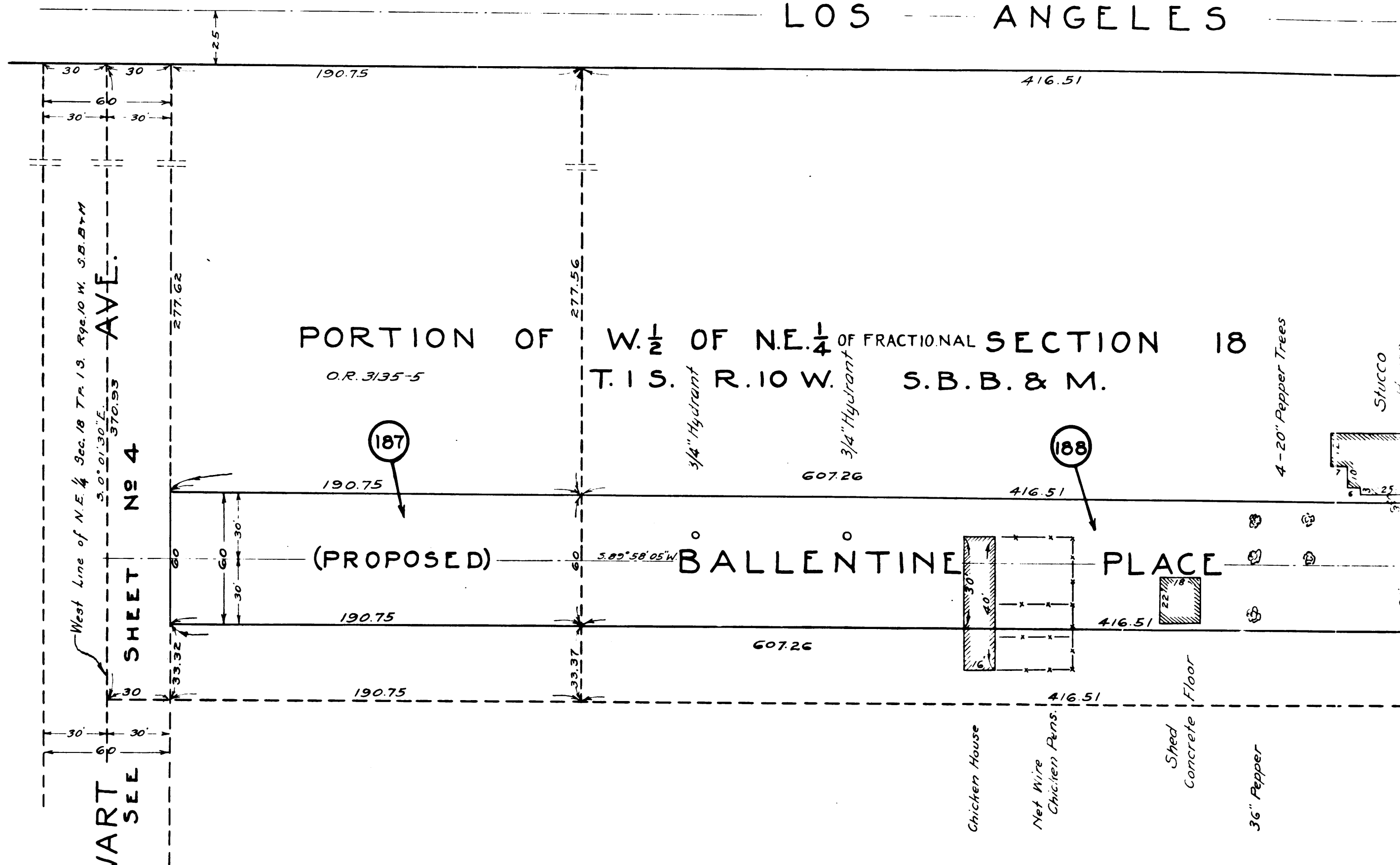
STEWART & LUNN AVENUE
D.A.M. DISTRICT No. 222
SHEET 7 of 15 SHEETS

STEWART & LUNN AVENUE
D.A.M. DISTRICT No. 222
SHEET 7 of 15 SHEETS

STEWART & LUNN AVENUE

STEWART & LUNN AVENUE

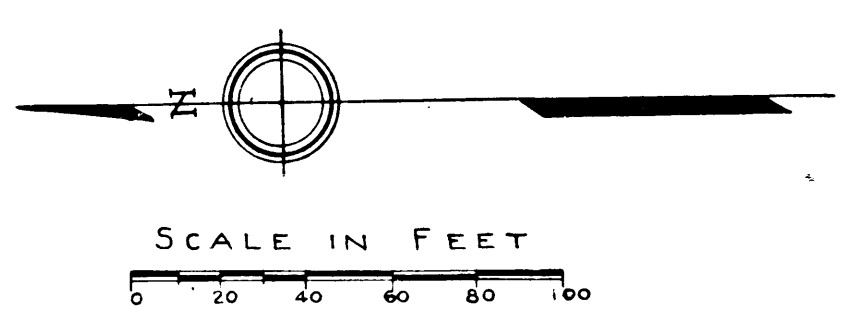
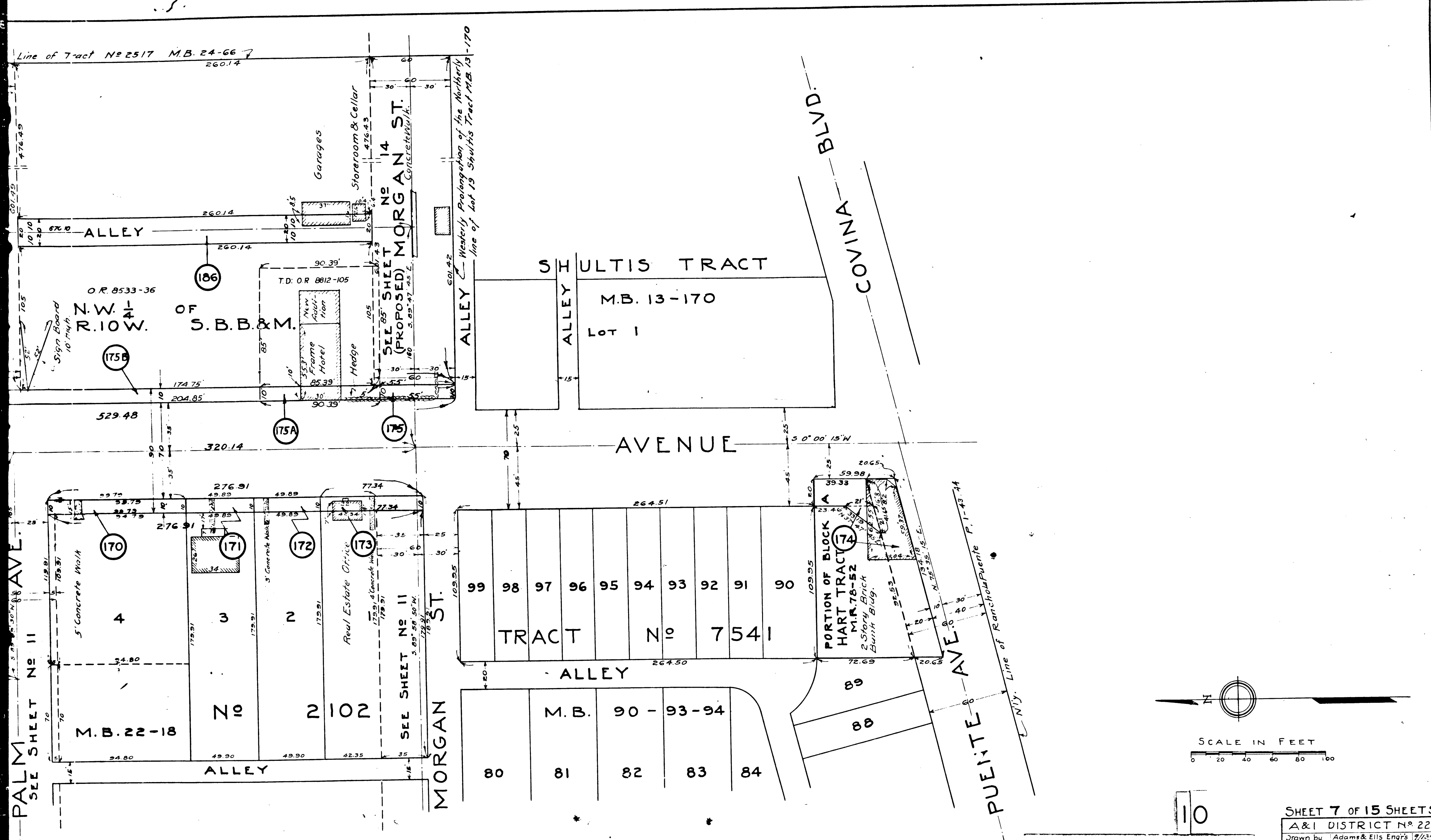
LOS ANGELES



SCALE IN FEET
0 20 40 60 80 100

SHEET 7 OF 15 SHEETS
A&I DISTRICT No. 222
Drawn by Adams & Ellis Engrs 7/13/28
Traced by S. K. Payzant 11/16/28
Checked by [Signature] 5/12/34

9
C.F. 1790 2-3

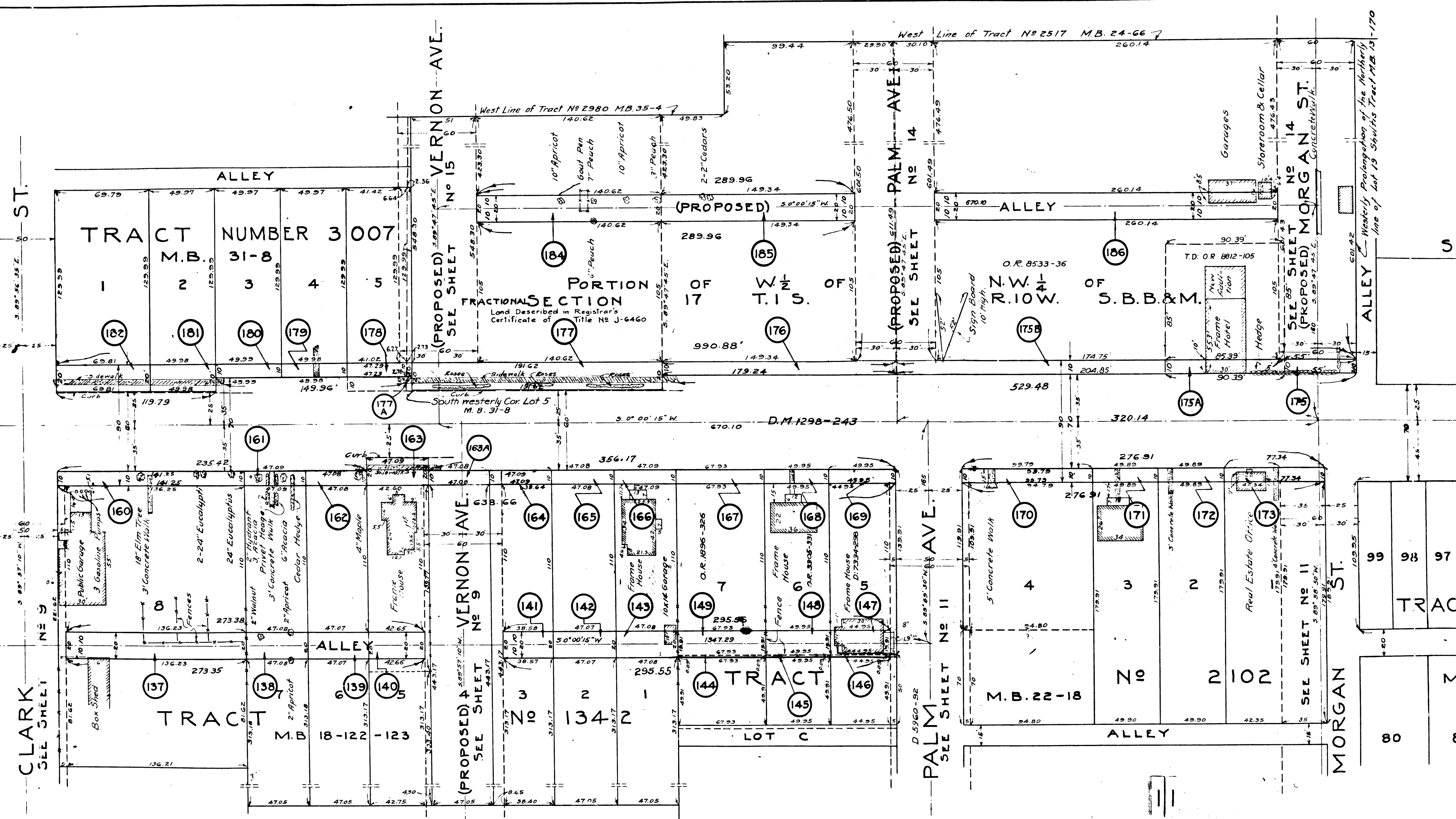


SHEET 7 OF 15 SHEETS
 A&I DISTRICT No 222
 Drawn by Adams & Ellis Engr's 7/13/28
 Traced by S.K. Payzan 11/4/28
 Checked by [Signature] 5/13/34

C.F. 1790 2-3

СЪЗДАНА & ДИЗАЙНИРАНА
 ОТ А&И ЕНЖИНИРИ
 21 ЮЛИ 1928

ДИЗАЙНИРАНА ОТ А&И ЕНЖИНИРИ
 21 ЮЛИ 1928



CLARK ST.
SEE SHEET NO 9

ST.

TRACT NUMBER 3 007
M.B. 31-8

TRACT
M.B. 18-122-123

(PROPOSED) & VERNON AVE.
SEE SHEET NO 9

(PROPOSED) & VERNON AVE.
SEE SHEET NO 15

(PROPOSED) & VERNON AVE.
SEE SHEET NO 9

TRACT
LOT C

PALM AVE.
SEE SHEET NO 11

(PROPOSED) & PALM AVE.
SEE SHEET NO 14

M.B. 22-18

No 2 102

SEE SHEET NO 11
MORGAN ST.

SEE SHEET NO 14
(PROPOSED) MORGAN ST.

TRACT
M.B.

SEE SHEET NO 14
(PROPOSED) MORGAN ST.

ST.

LOS ANGELES

ST.

CLARK
SEE SHEET
NO 9

VERNON AVE.

(PROPOSED) A
SEE SHEET
NO 9

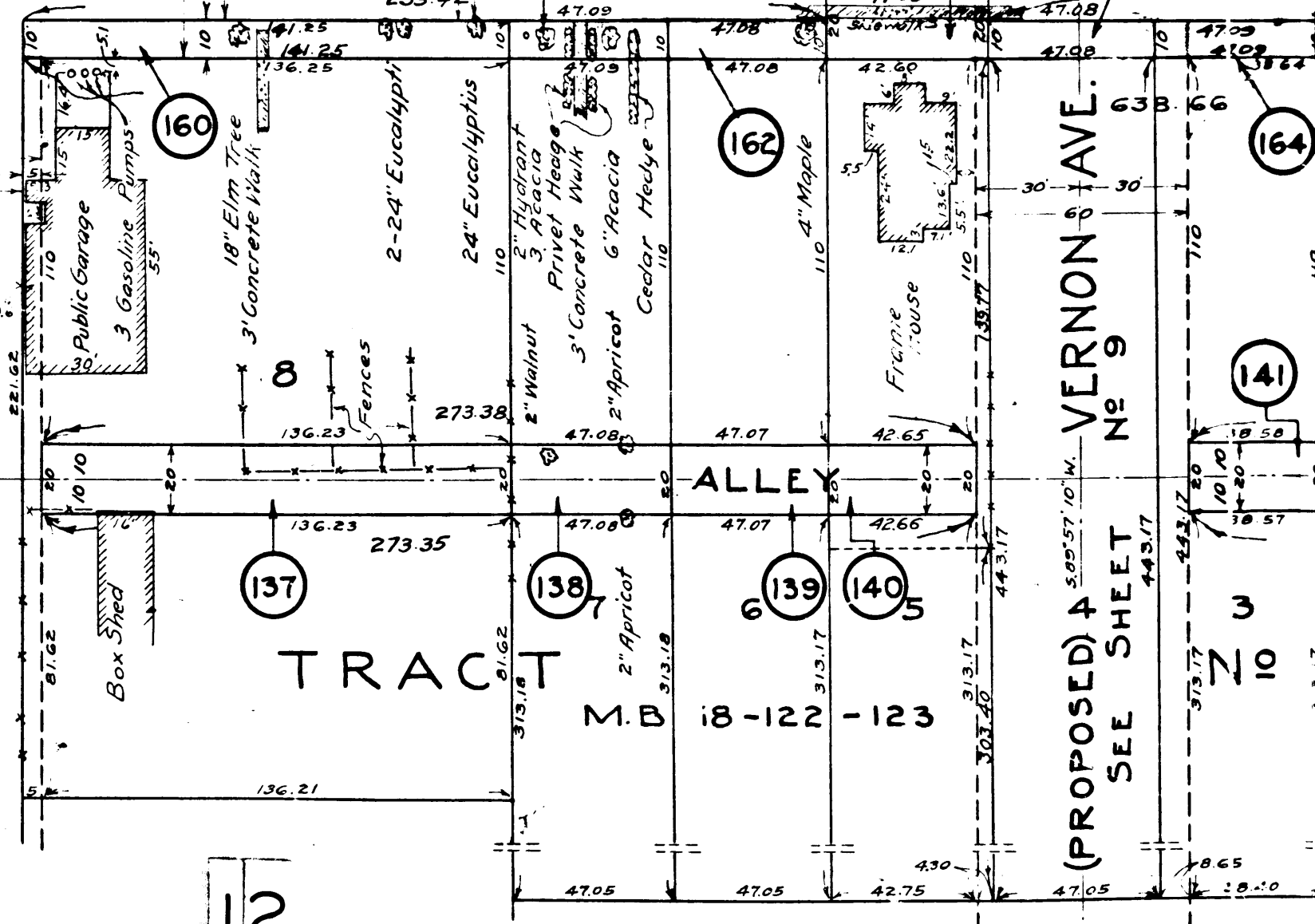
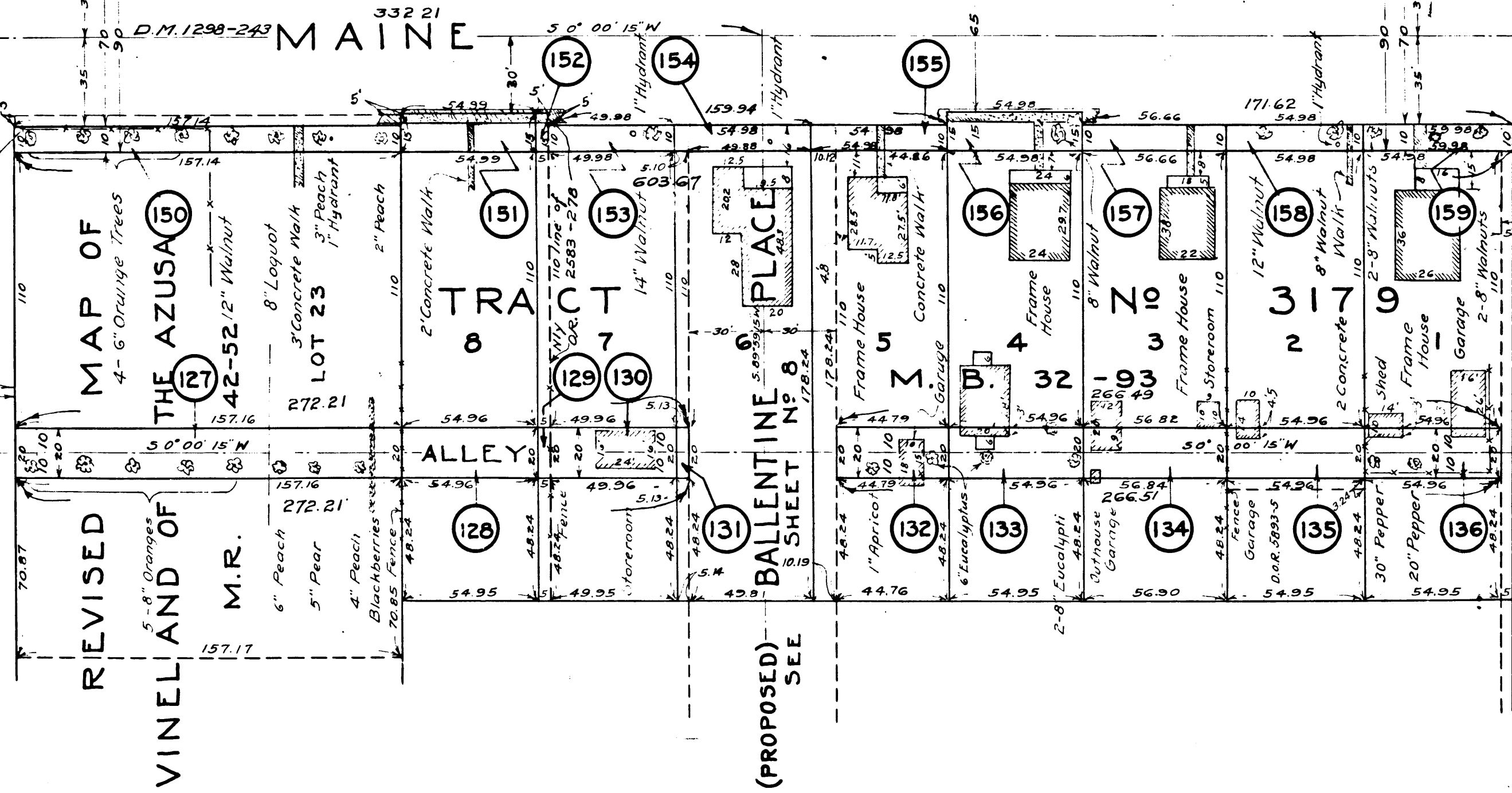
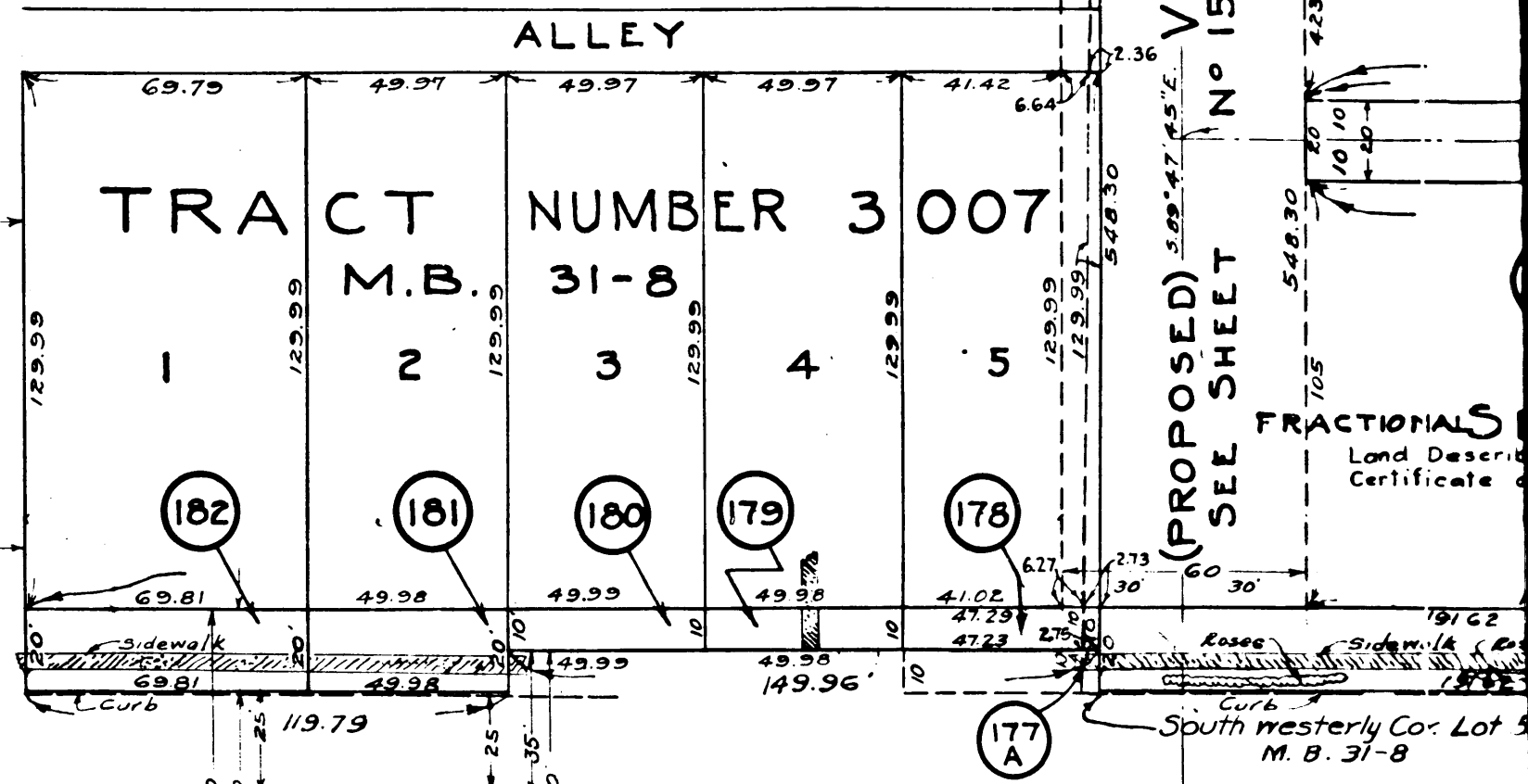
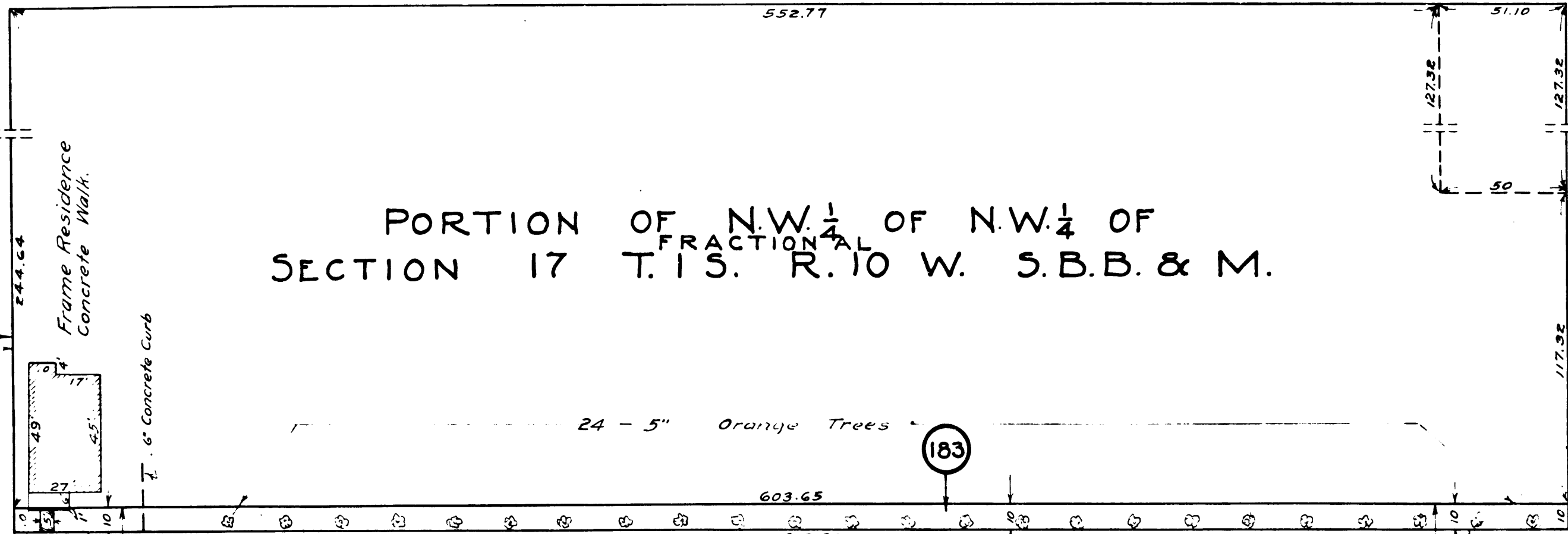
PORTION OF N.W. 1/4 OF N.W. 1/4 OF
SECTION 17 T.15S. R.10W. S.B.B. & M.

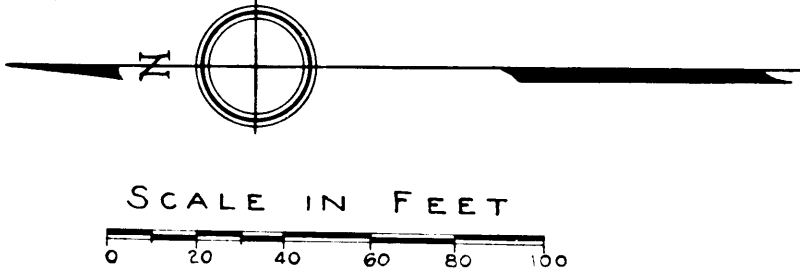
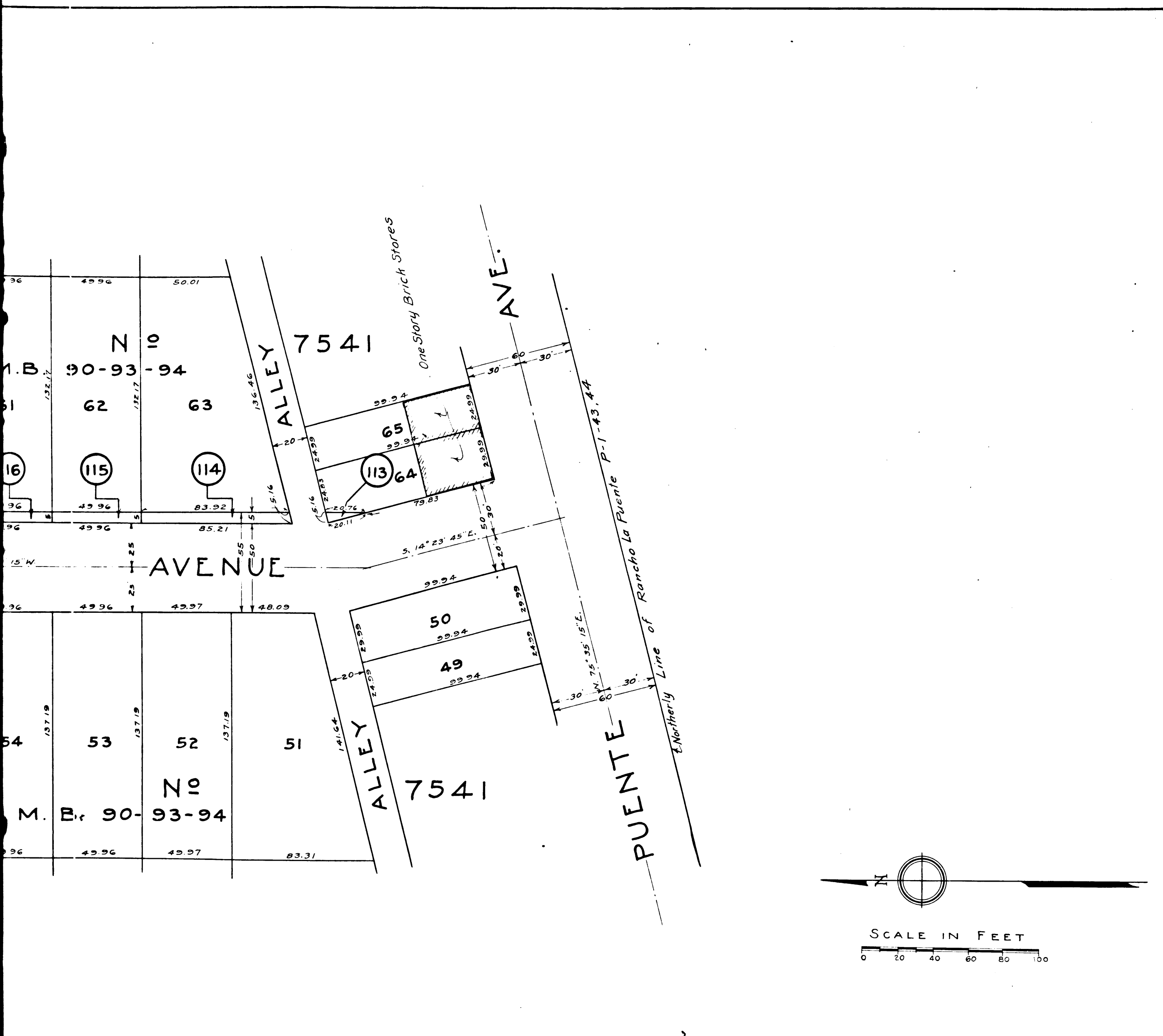
TRACT NUMBER 3007
M.B. 31-8

TRACT
M.B. 18-122 - 123

(PROPOSED)
SEE SHEET
NO 15

FRACTIONALS
Land Descri
Certificate





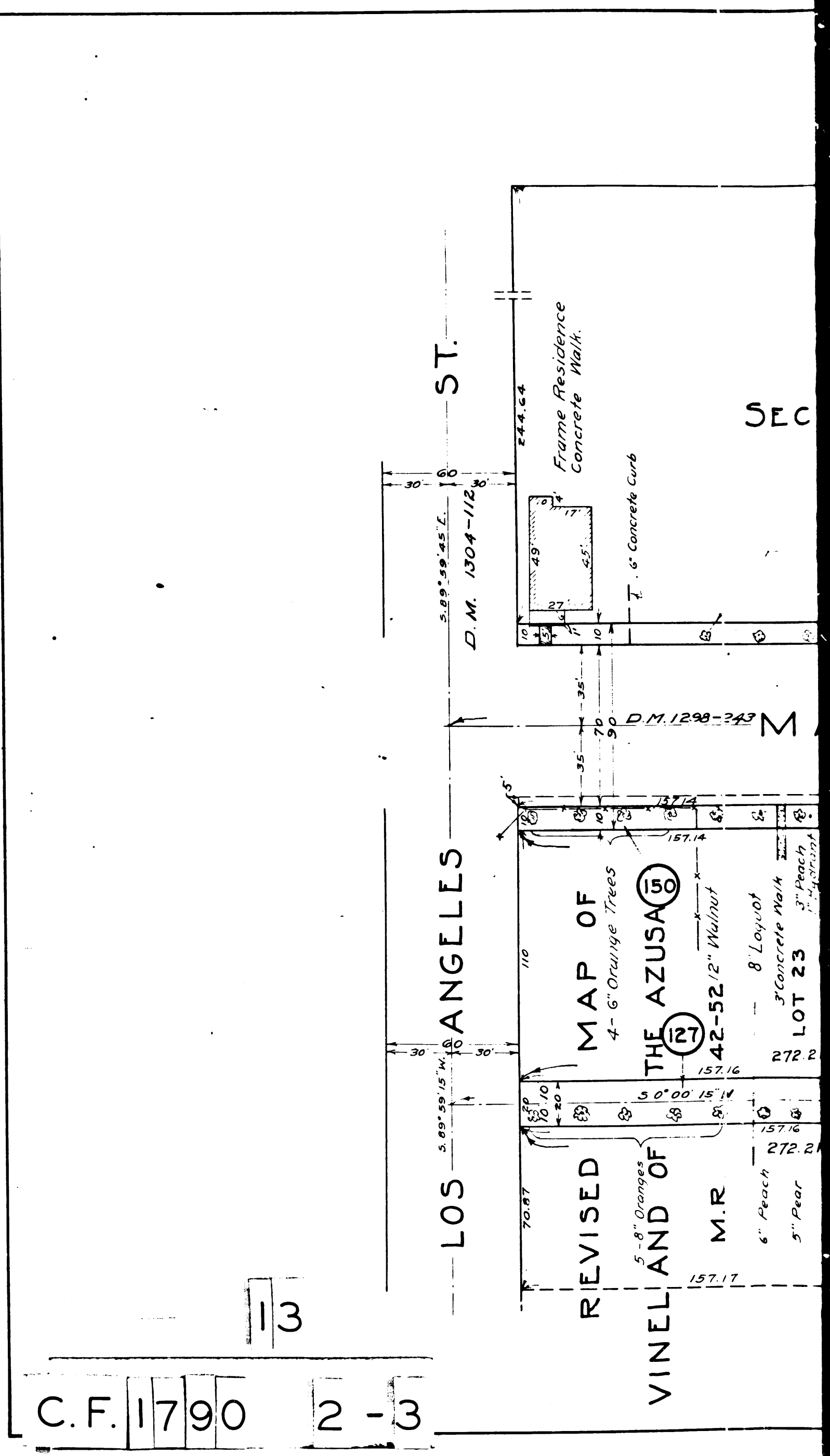
SHEET 6 OF 15 SHEETS
 A&I DISTRICT No 222
 Drawn by Adams & Ellis Engrs 7/12/28
 Traced by SK Payzant 9/2/28
 Checked by E 5/14/31

SHEET 6 OF 15 SHEETS

SHEET 6 OF 15 SHEETS

VINEL AVENUE & ALLEYS
 A & I DISTRICT No 222

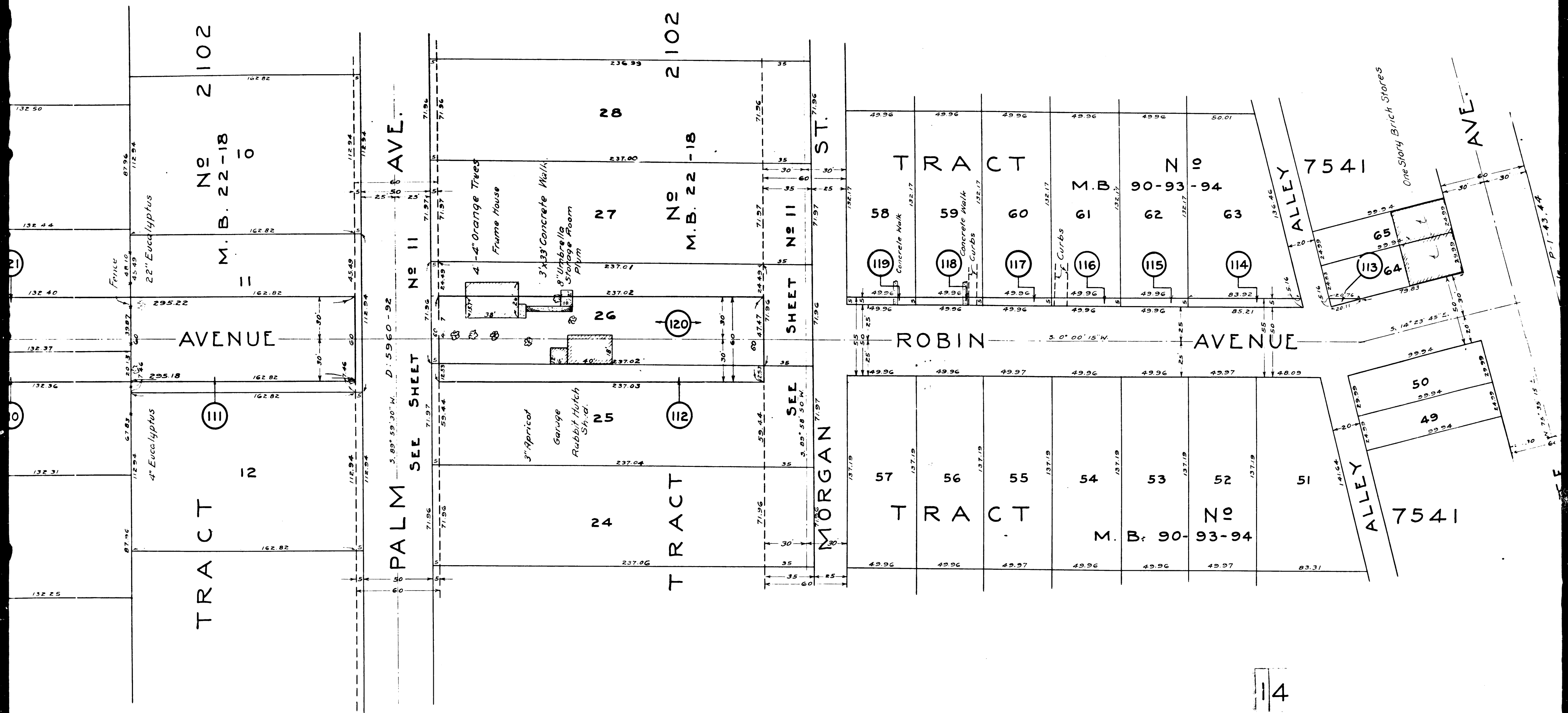
REVISIONS
 COND. 11 to 1



C.F. 1790 2-3

13

SEC



14

C.F. 1790 2-3

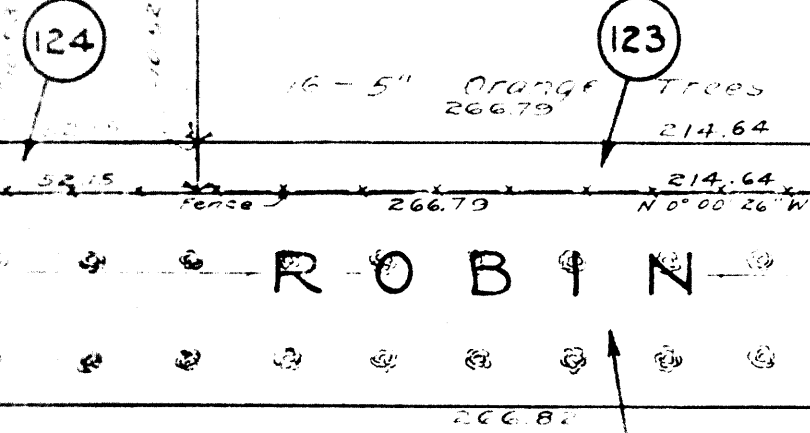
DALLING SHEET No 8

SEE

PROPOSED

VINELAND OF THE AZUSA
42 - 52

27



ROBIN

VINELAND OF THE AZUSA
42 - 52

28

CLARK STREET

SEE SHEET No 9

SEE SHEET No 9

CLARK STREET

134 2

13

M.B. 18-122-123

VERNON AVE.
No 9

(PROPOSED)
SEE SHEET No 9

122

14

M.B. 18-122-123

SEE SHEET No 9

109

15

(PROPOSED)
SEE SHEET No 9

121

110

AVENUE

No 2102

M.B. 22-180

111

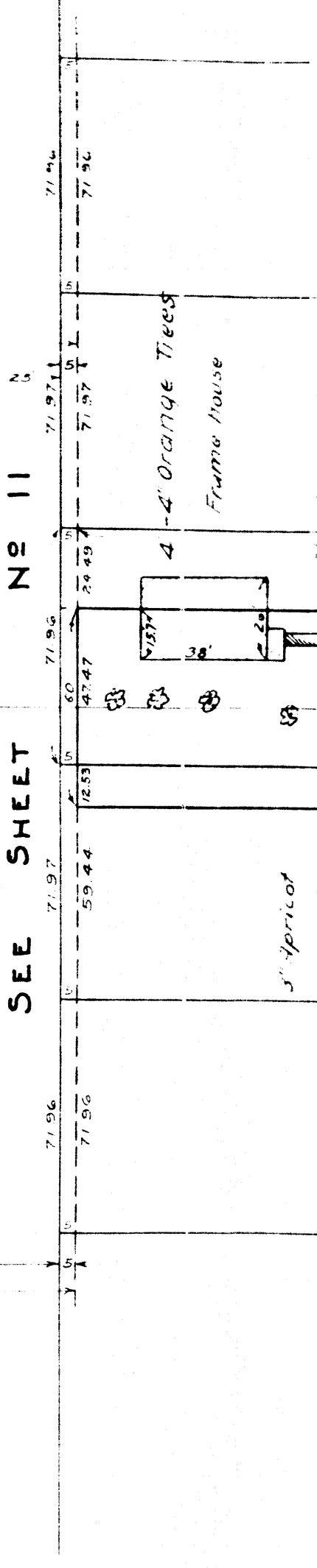
TRACT 12

15

PALM AVE.

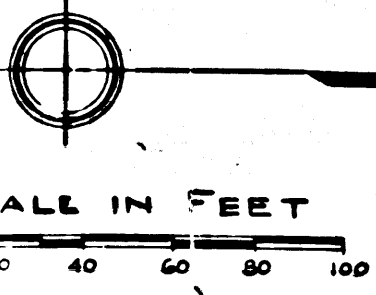
SEE SHEET No 11

PALM AVE.



C.F. 1790

2-3



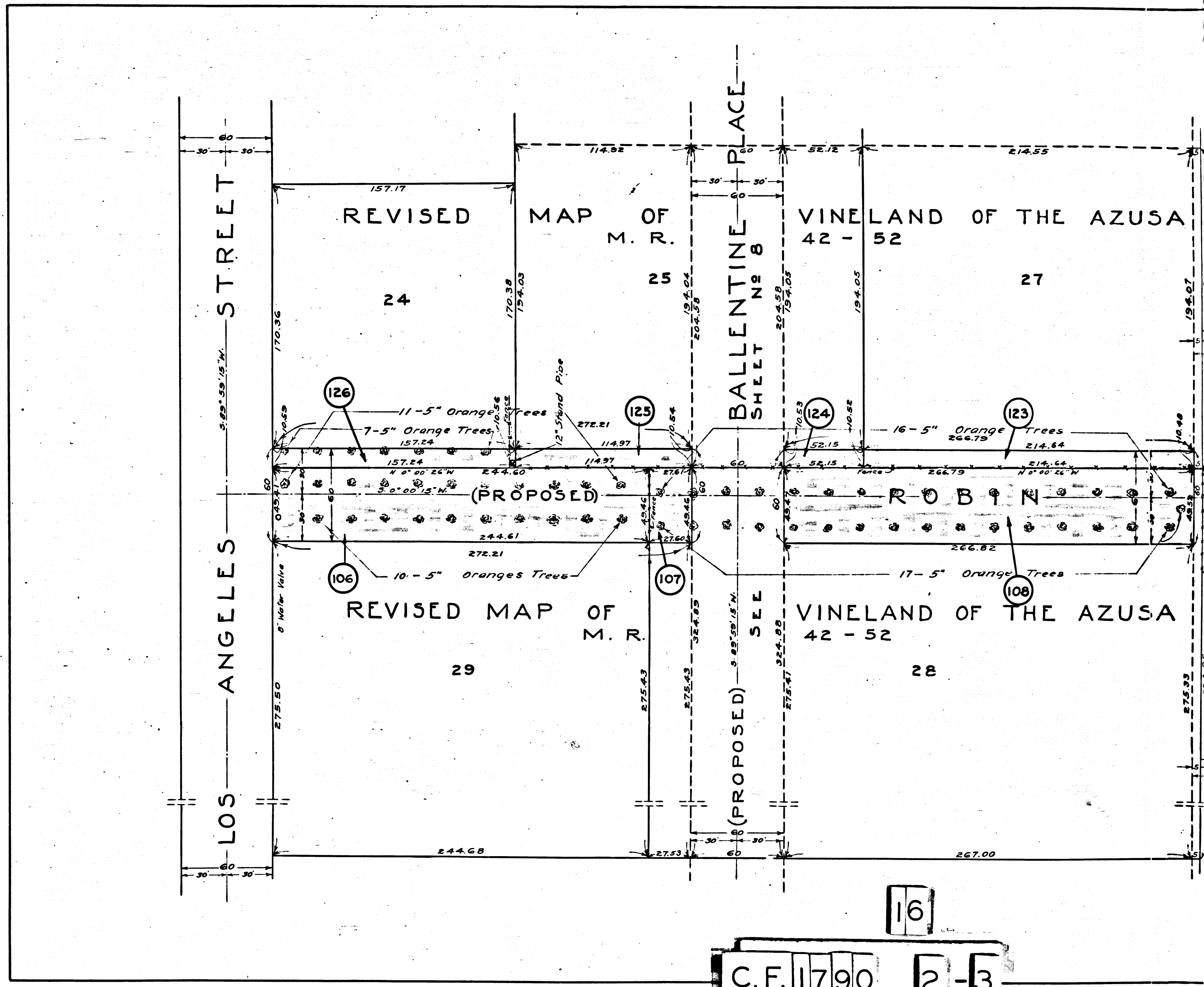
SHEET 5 OF 15 SHEETS
 A & I DISTRICT No 222
 Drawn by Adams & Ellis, Eng'rs 10/1/22
 Traced by S.K. Flyzant 10/1/22
 Checked by [Signature]

Sheet 5 of 15 Sheets
 CONDENSATION VALVE
 ROBIN AVENUE
 A & I DISTRICT No 222

Sheet 5 of 15 Sheets
 CONDENSATION VALVE
 ROBIN AVENUE
 A & I DISTRICT No 222

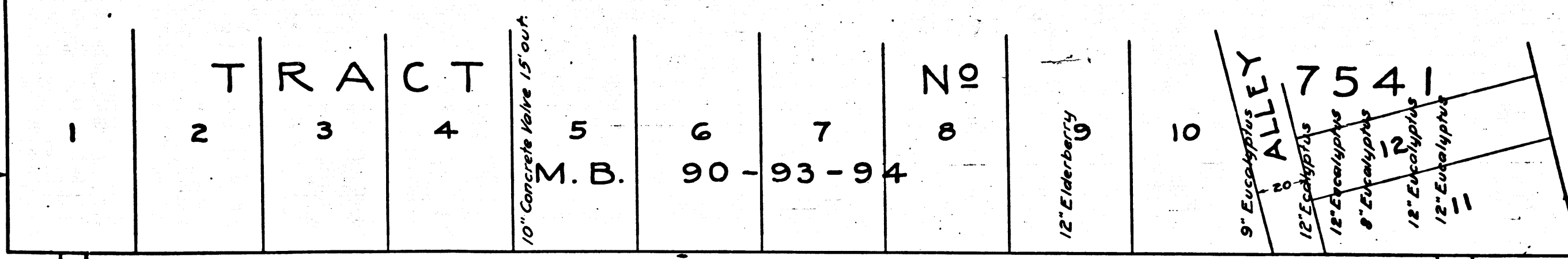
Sheet 5 of 15 Sheets
 CONDENSATION VALVE
 ROBIN AVENUE
 A & I DISTRICT No 222

Sheet 5 of 15 Sheets
 CONDENSATION VALVE
 ROBIN AVENUE
 A & I DISTRICT No 222



16
 C.F. 1790 2-3

MORGAN ST.



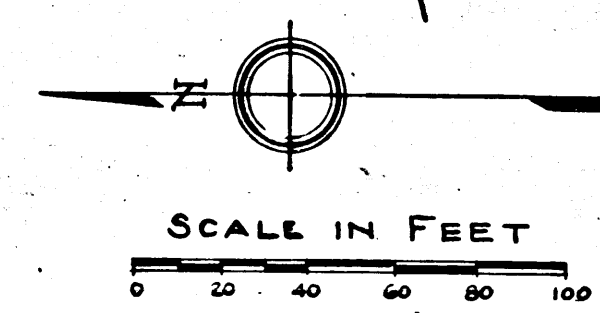
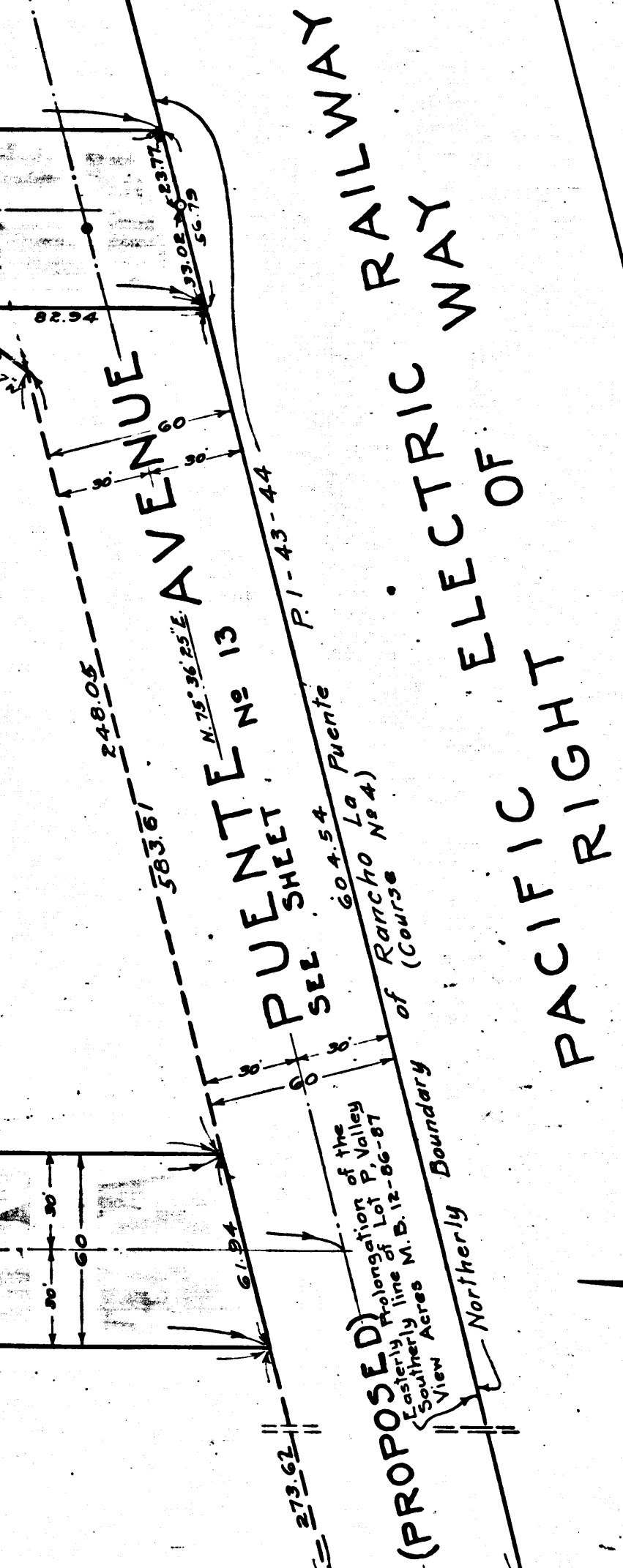
SIERRA MADRE AVENUE 757.35

MADRE AVENUE 3.0° 00' 10" N

Torrans Certificate EV43077 SECTION 18 T.1S. R.10 W. S.B.B. & M.

MONTE VISTA AVENUE 5.0° 00' 10" N

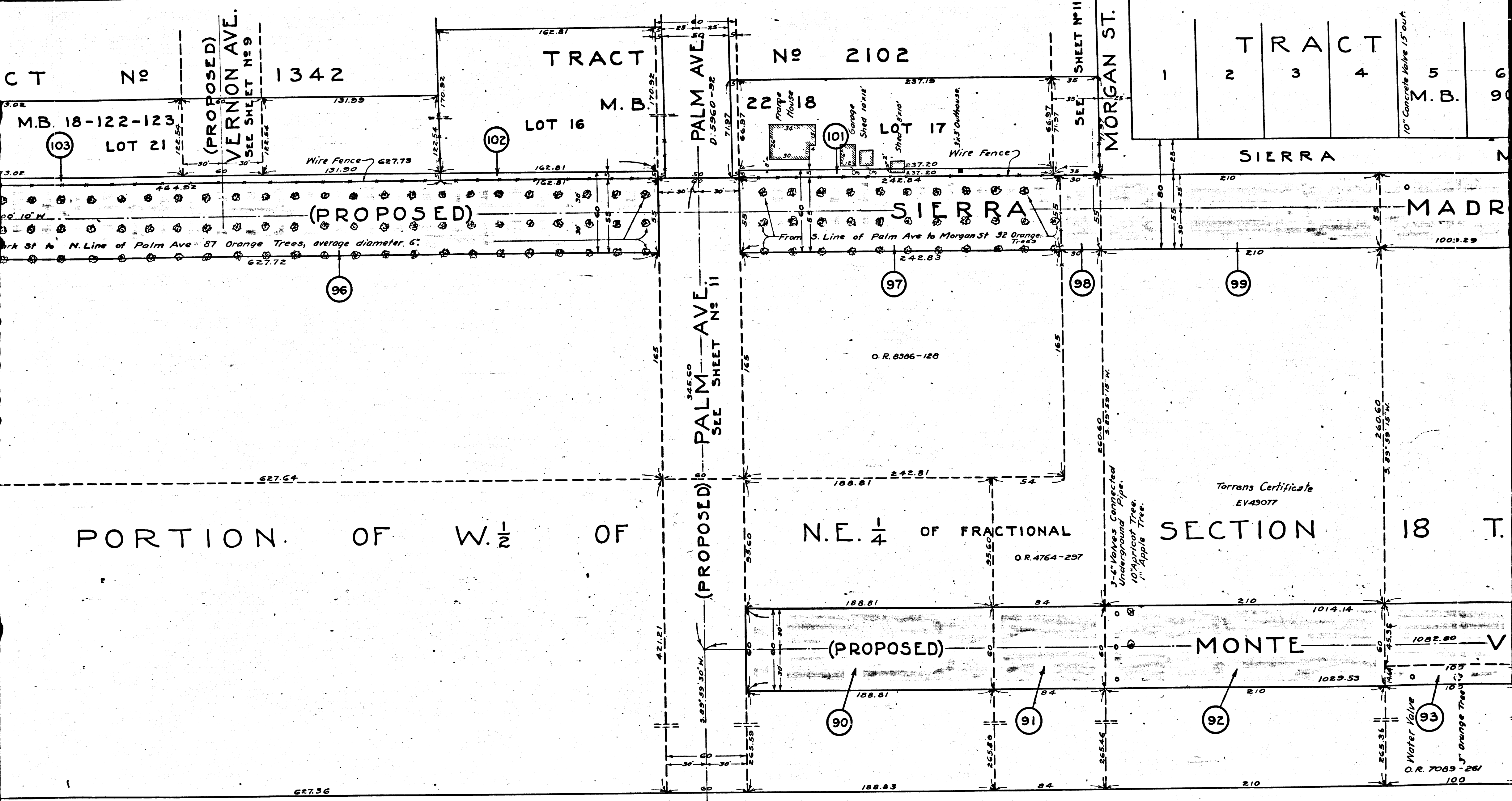
AVENUE 3.0° 01' 30" E



SHEET 5 OF 15 SHEETS
A&I DISTRICT No 222
Drawn by Adams & Ellis, Eng'rs
Traced by S.K. Bryant
Checked by

C.F. 1790 2-3

COND. DIVISION 12-13
 SIERRA MADRE WATER WORKS DISTRICT No 555
 SIERRA MADRE WATER WORKS DISTRICT No 555
 COND. DIVISION 12-13
 SIERRA MADRE WATER WORKS DISTRICT No 555



TRACT					
1	2	3	4	5	6
					M.B. 90
10" Concrete Valve 15' out					

PORTION OF W. 1/2 OF N.E. 1/4 OF FRACTIONAL SECTION 18 T.

Torrens Certificate
EV49077

3-6" Valves Connected
Underground Pipe.
10" Apricot Tree.
1" Apple Tree.

Water Valve
O.R. 7089-261
100

18

C.F. 1790 2-3

LOS ANGELES

ST.

NORTH 1/2 J.S. BEAL 4.028 AC'S
REPLAT OF BLOCK 20
OF VINELAND
M. R. 66-43

REVISED

VINELAND

OF
M. R.

LOT 30

(105)

SIERRA

(95)

MAP OF

THE AZUSA

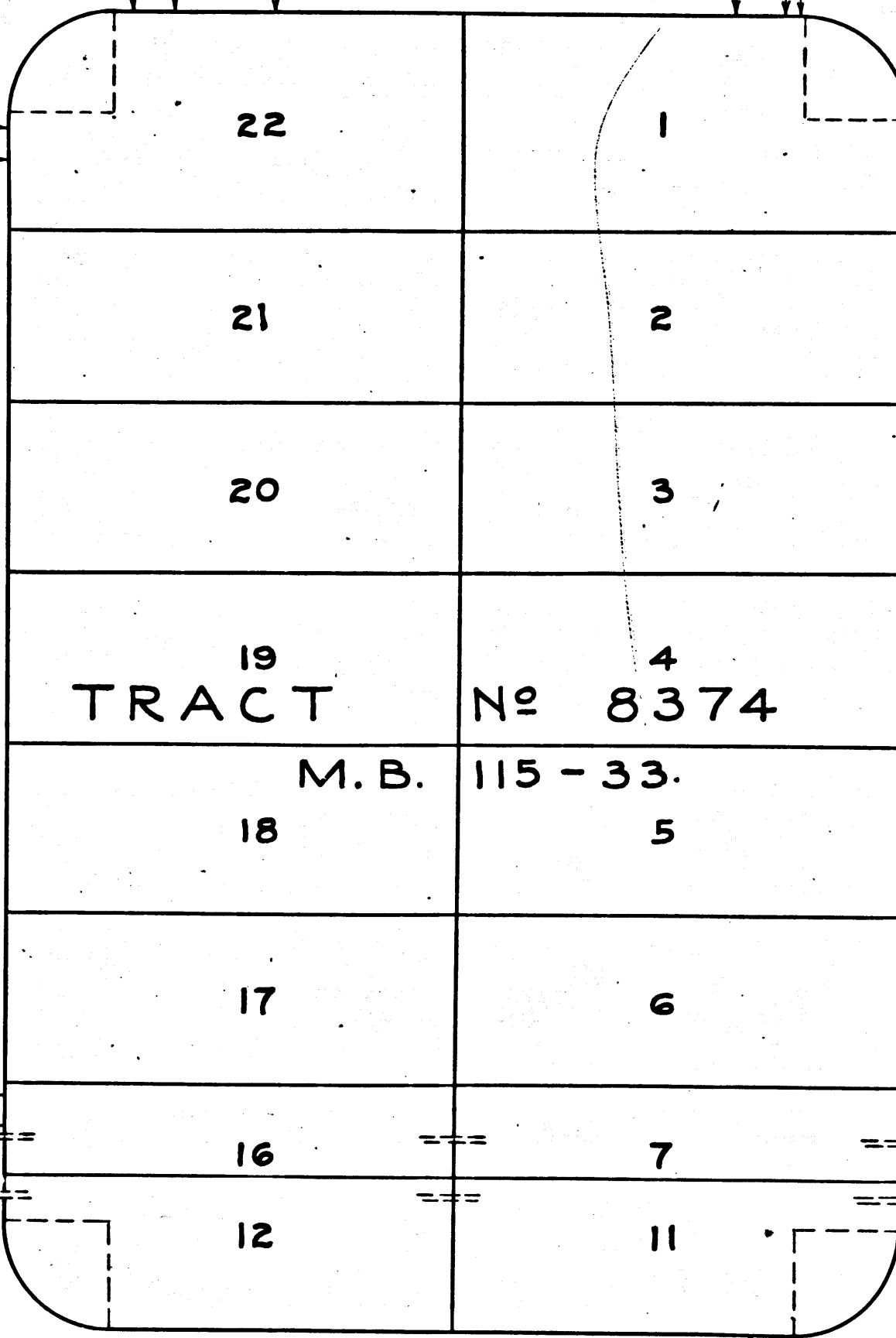
42 - 52

LOT 31

(104)

MADRE AVENUE

(PROPOSED)
3.03°-59'15" W
581.58
BALLENTINE PLACE
SEE SHEET No 8



CLARK STREET
SEE SHEET No 9

ST.

TRACT No

M.B. 18-122-123

(103)

LOT 21

(PROPOSED)
VERNON AVE.

PORTIO

C.F. 1790 2-3

19

LA RICA