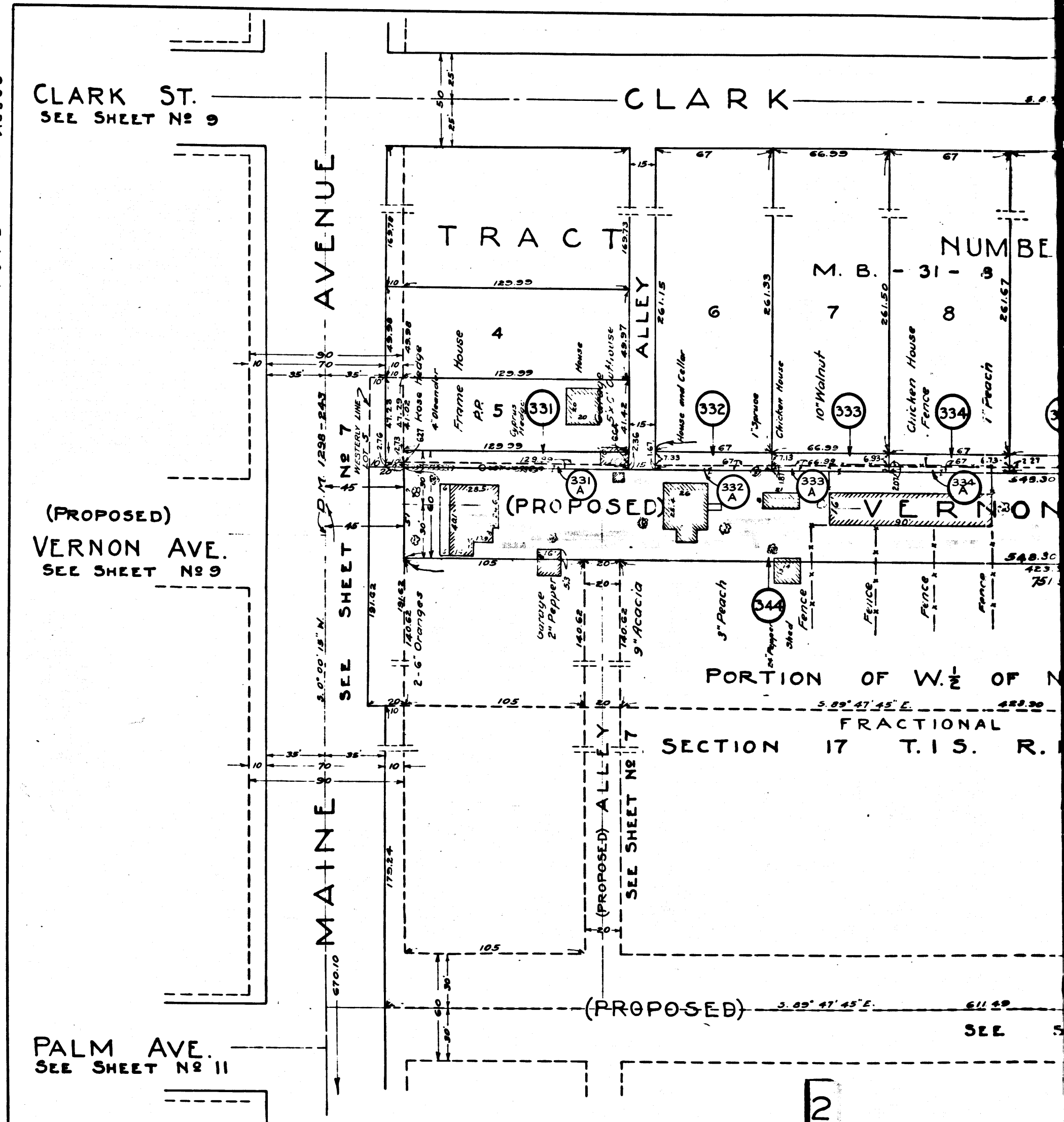
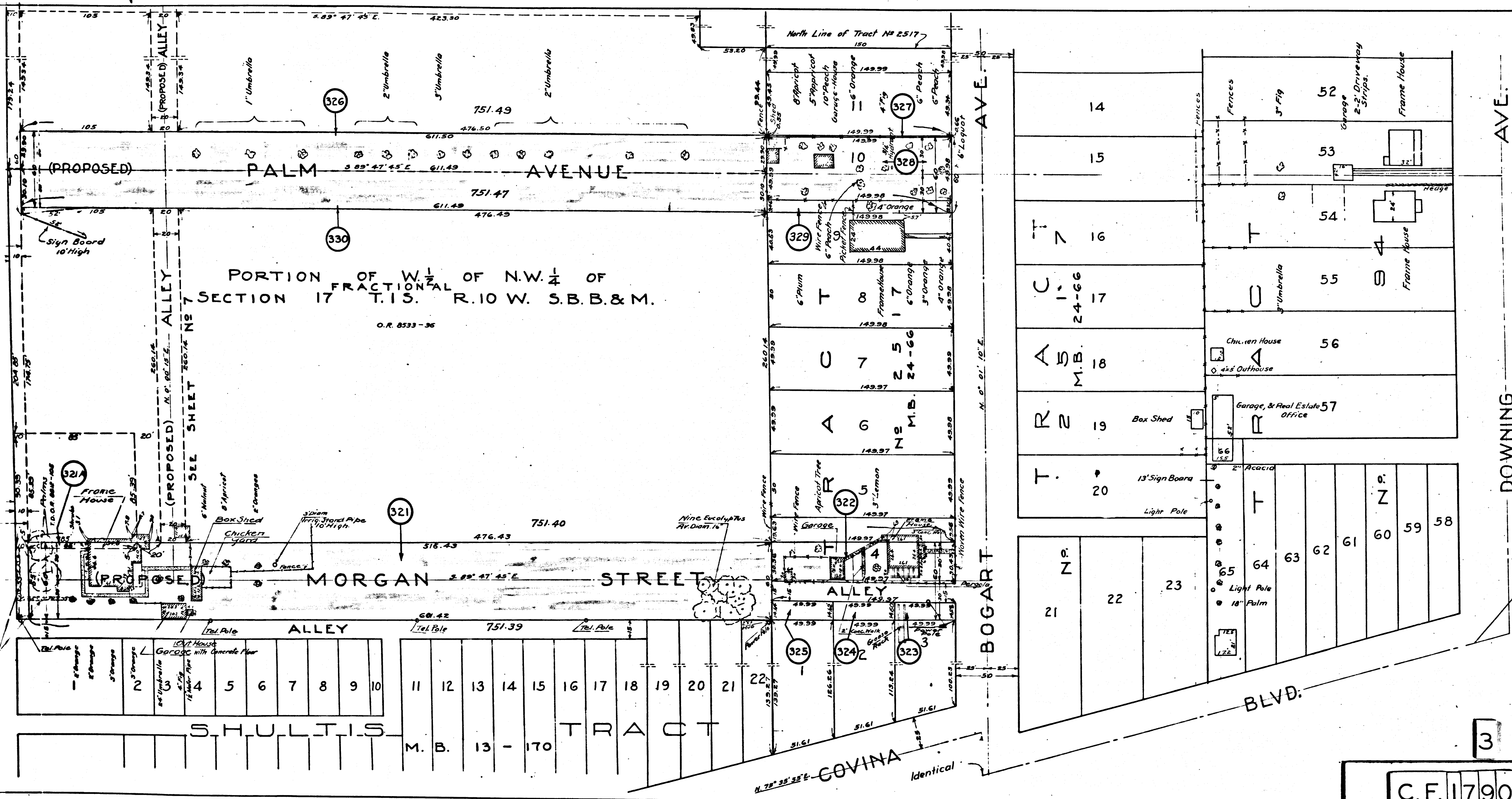


A&I DISTRICT NO 222
 SHEET 14 OF 15 SHEETS

A&I DISTRICT NO 222
 SHEET 14 OF 15 SHEETS

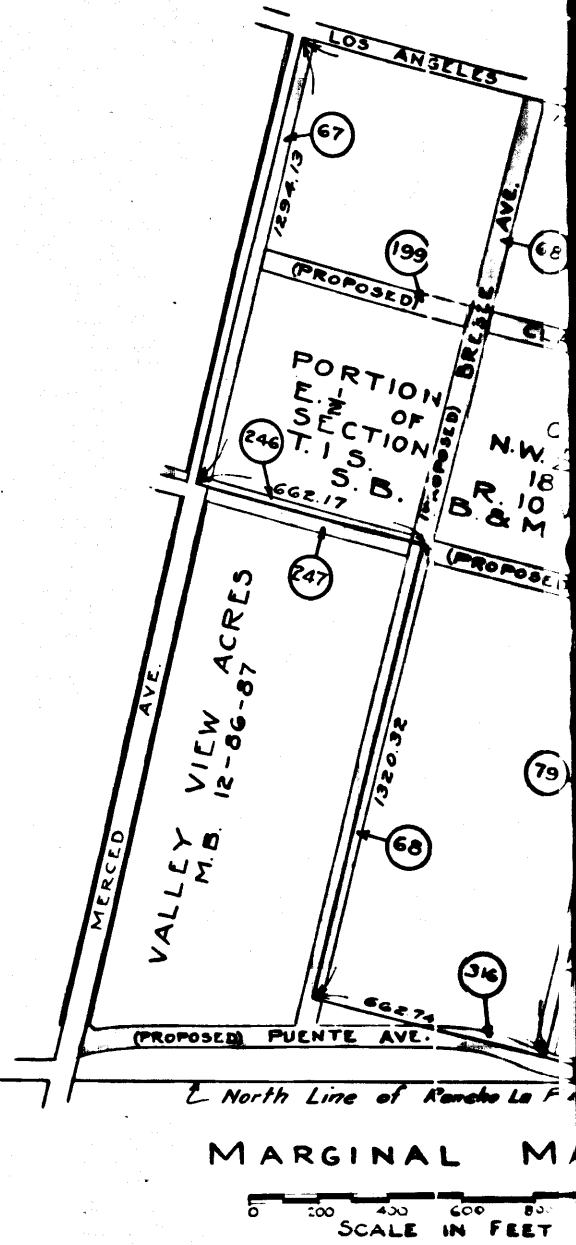
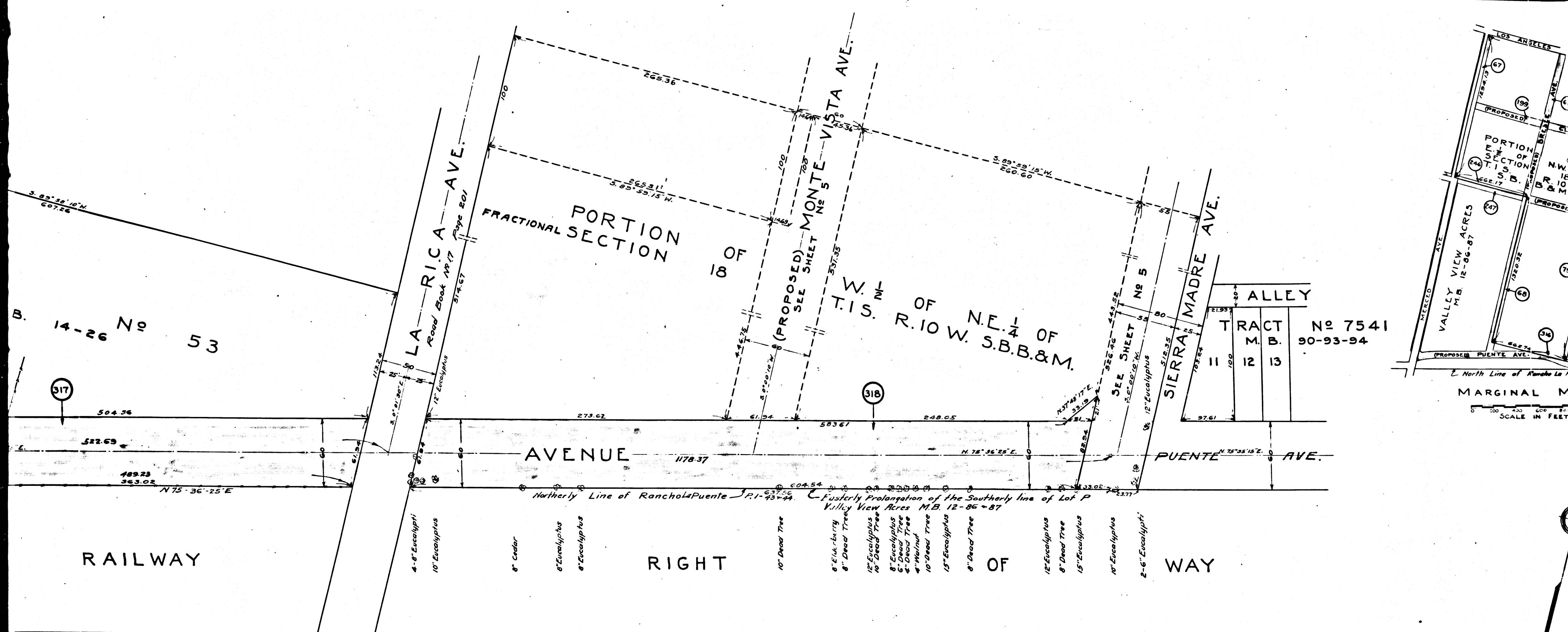


C.F. 1790 -



3

C.F. 1790-



SCALE IN FEET
0 100 200 300 400 500 600 700 800

RAILWAY

AVENUE

PUENTE AVE.

WAY

PORTION OF 18 OF FRACTIONAL SECTION

W. 1/4 OF N.E. 1/4 OF R. 10 W. S.B. & M.

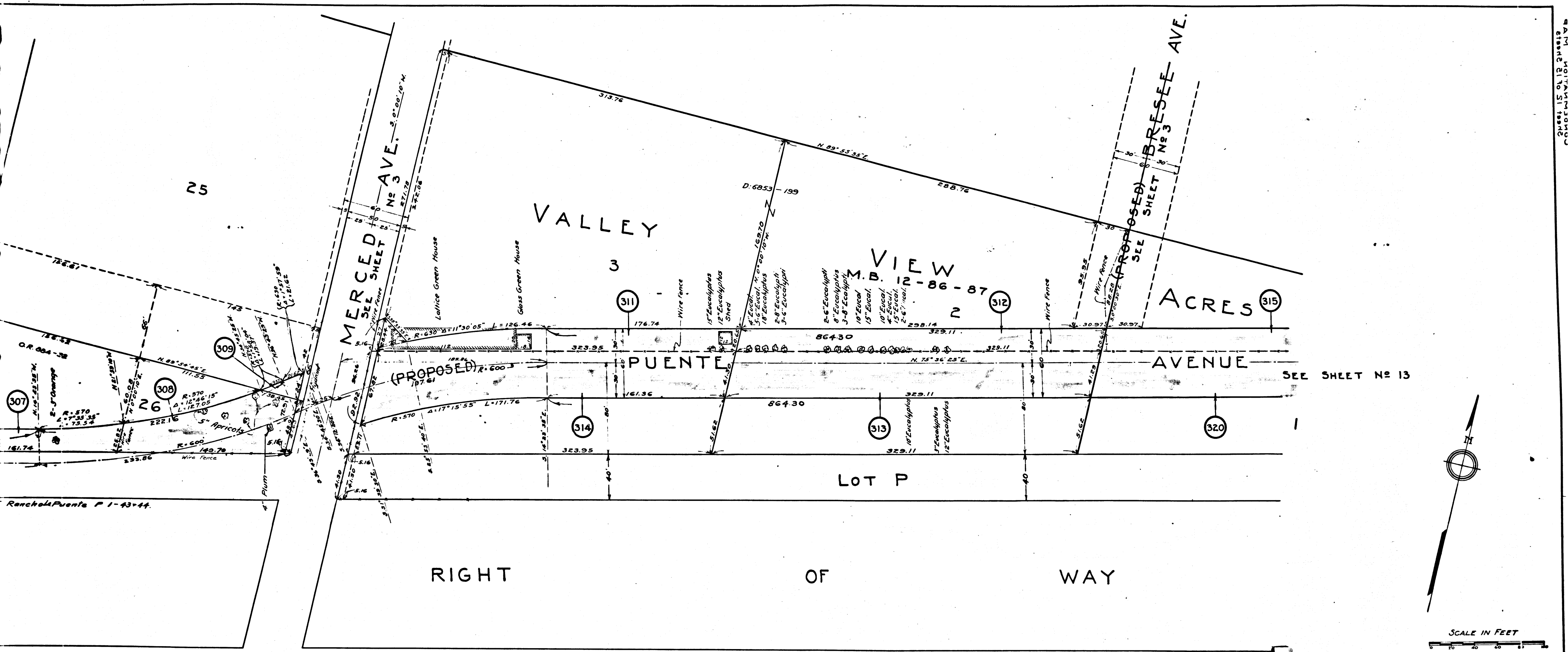
TRACT M. B. 90-93-94
11 12 13

- 4'-8" Eucalypti
- 10" Eucalyptus
- 8" Cedar
- 8" Eucalyptus
- 8" Eucalyptus
- 10" Dead Tree
- 8" Elderberry
- 8" Dead Tree
- 12" Eucalyptus
- 10" Dead Tree
- 8" Eucalyptus
- 6" Dead Tree
- 4" Dead Tree
- 4" Walnut
- 10" Dead Tree
- 15" Eucalyptus
- 8" Dead Tree
- 12" Eucalyptus
- 8" Dead Tree
- 15" Eucalyptus
- 10" Eucalyptus
- 2'-6" Eucalypti

5

C.F. 1790-

SHEET
A-Z
Drawn
Traced
Checked

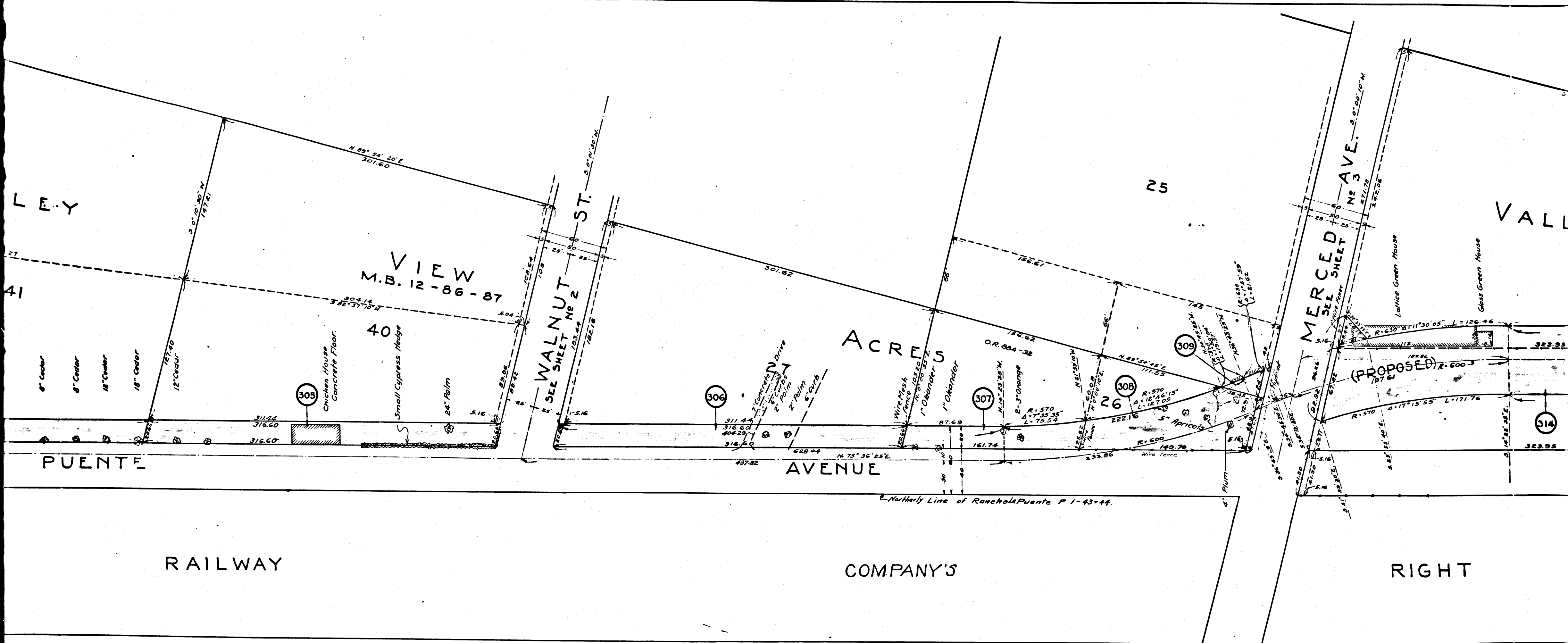


Ranch of Puente P 1-43-44.

8

C.F. 1790 -

SHEET 12 OF 15 SHEETS
 A&I DISTRICT No 222
 Drawn by Adams & Ellis 2/22/28
 Traced by S.K. Poyton 1/22/28
 Checked by [Signature] 5/4/28



LEY

VALL

VIEW
M.B. 12-86-87

WALNUT ST.
SEE SHEET NO 2

MERCED AVE.
SEE SHEET NO 3

ACRES

PUENTE

AVENUE

RAILWAY

COMPANY'S

RIGHT

Northerly Line of Rancho Puente P 1-43+44.

9

C.F. 1790-

LOT N - VALLEY VIEW ACRES
VALLE VISTA
M.B. 12-86-87
N. 89° 38' 20" W.

LOT 6 FRACTIONAL SECTION 13

T.I.S., R.II W.
S.B.B. & M.
O.R. 6763-108

CENTER ST.

VALLEY

VIEW
M.B. 12-86-87

41

40

302

303

304

305

PUENTE AVENUE

PUENTE

Chicken House
Concrete Floor
Small Cypress Hedge
24" Palm

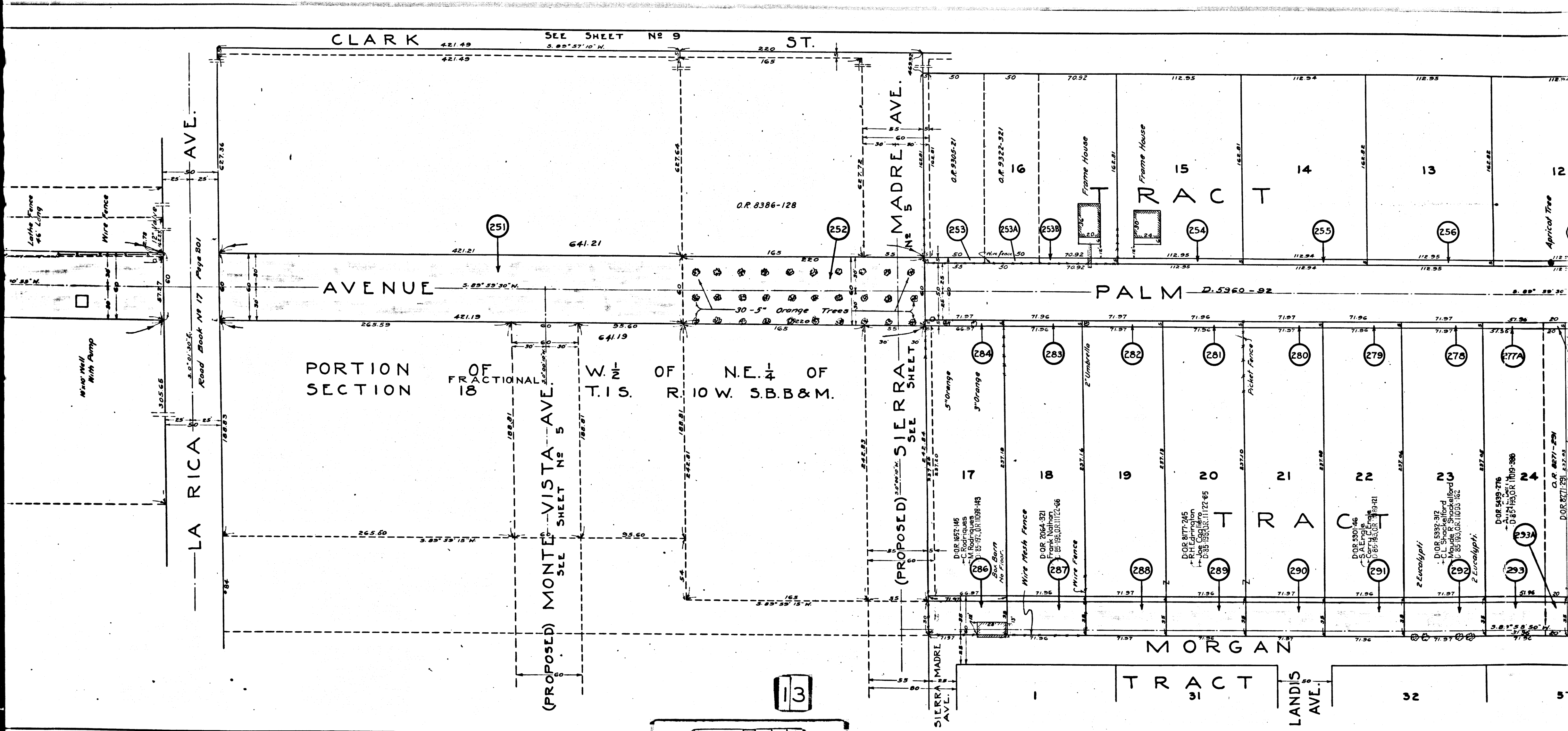
PACIFIC

ELECTRIC

RAILWAY

10

C.F. 1790-



C.F. 1790 -

13

CLARK ST. SEE SHEET No 9

LA RICA AVE.

SIERRA MADRE AVE. (PROPOSED) SEE SHEET No 5

PORTION SECTION OF FRACTIONAL 18 W. 1/2 OF T. 1 S. OF N.E. 1/4 OF R. 10 W. S.B.B&M.

PALM TRACT D. 5360-92

MORGAN LAND'S TRACT

SIERRA MADRE AVE. (PROPOSED) SEE SHEET No 5

LA RICA AVE.

C.F. 1790 -

ANGELES ST

ST

CLARK

421.49
421.49

10' Walnut Trees Averaging 10' Diam.

CLARK ST

SEE SHEET No 9

10' Walnut Trees Averaging 10' Diam.

PALM

AVENUE

PORTION OF E 1/2 OF N.W. 1/4 OF SECTION 18 T.1S. R.10W. S.B.B.&M.

PORTION OF W 1/2 OF N.E. 1/4 OF SECTION 18 T.1S. R.10W. S.B.B.&M.

PORTION OF SECTION 18

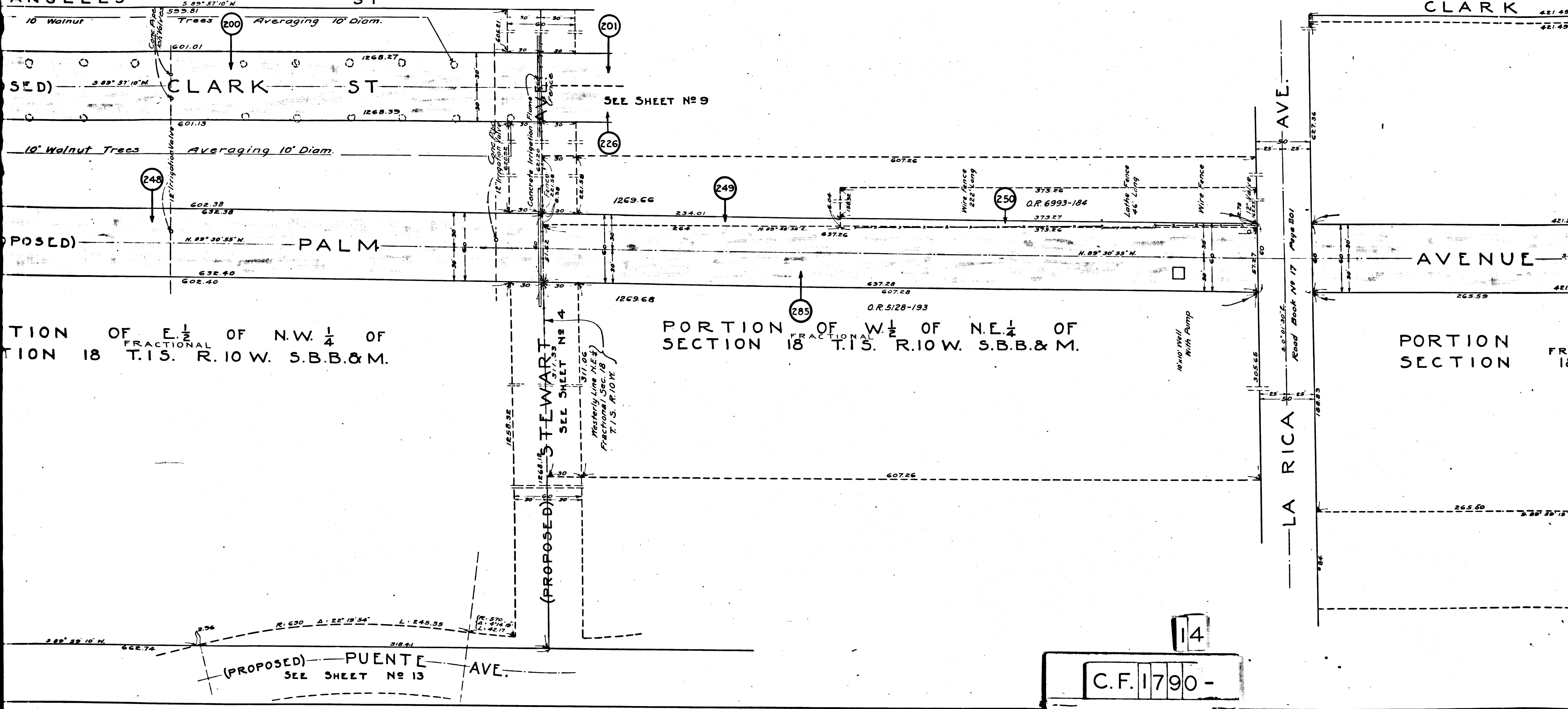
(PROPOSED) STEWART
SEE SHEET No 4
Westerly Line N.E. 1/4
Fractional Sec. 18
T.1S. R.10W.

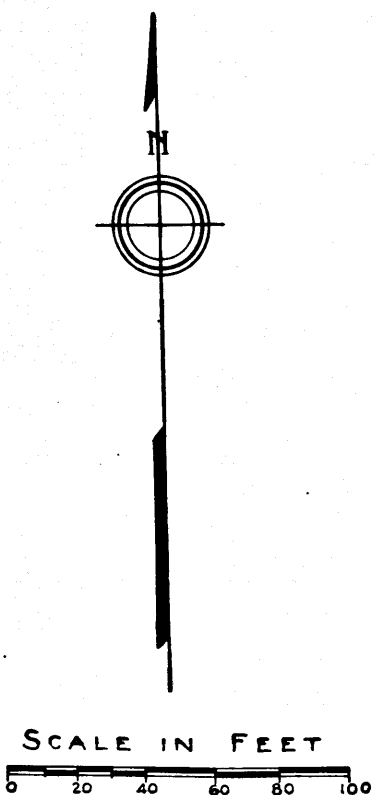
LA RICA AVE.
Road Book No 17 Page 201

(PROPOSED) PUENTE AVE.
SEE SHEET No 13

C.F. 1790 -

14





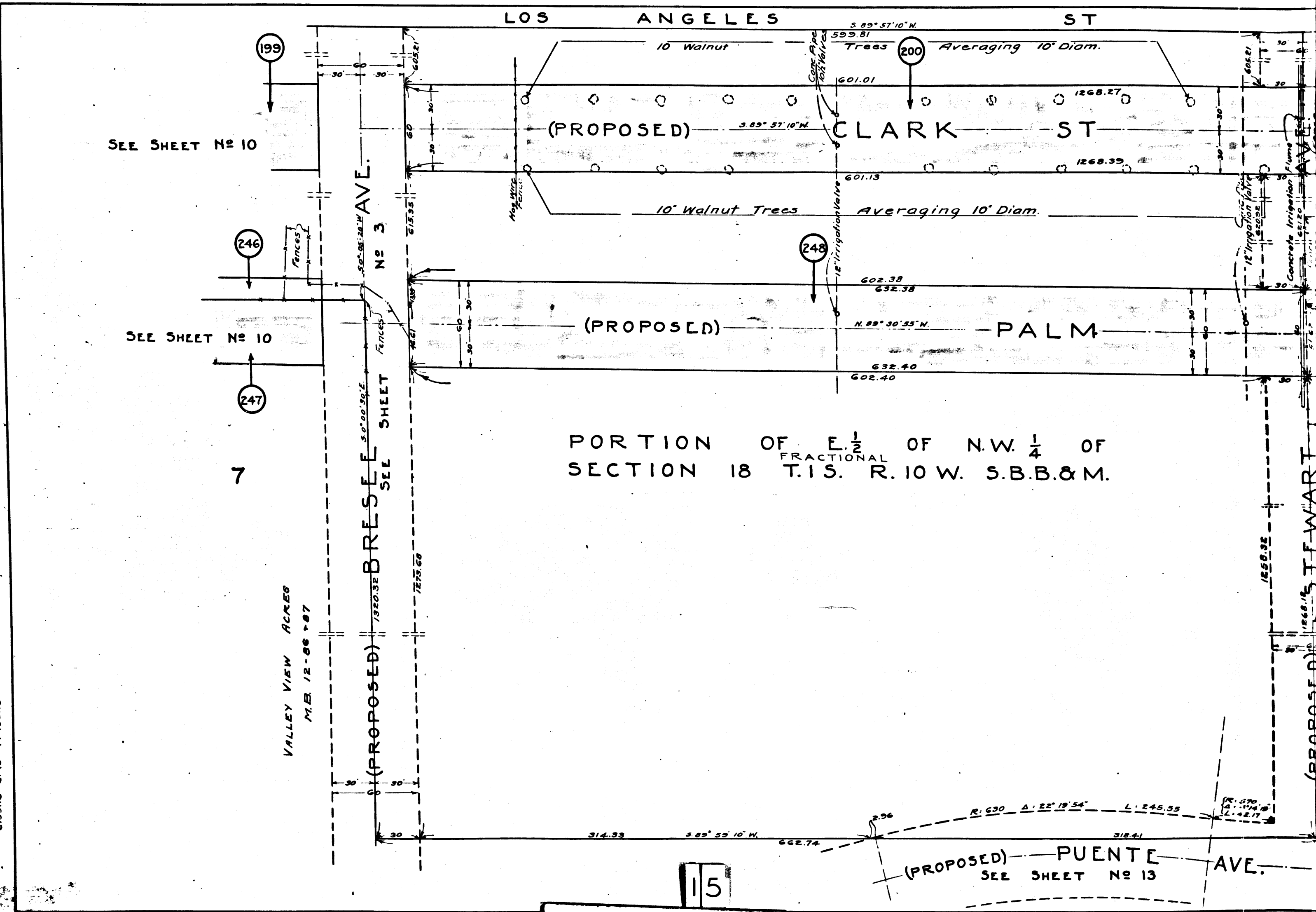
SHEET 10 OF 15 SHEETS
 A & I DISTRICT No 222
 Drawn by Adams & Ellis Eng'rs 9/16/22
 Traced by S.K. Pejzant 1/18/23
 Checked by [Signature] 6/1/23

SHEET 10 OF 15 SHEETS
 A & I DISTRICT No 222
 BATH AVENUE & CLARK STREETS

SHEET 10 OF 15 SHEETS
 A & I DISTRICT No 222
 BATH AVENUE & CLARK STREETS

SHEET 10 OF 15 SHEETS
 A & I DISTRICT No 222
 BATH AVENUE & CLARK STREETS

SHEET 10 OF 15 SHEETS
 A & I DISTRICT No 222
 BATH AVENUE & CLARK STREETS



15
 C.F. 1790 -

(PROPOSED) STEWART

LOS ANGELES

LOS ANGELES

N.E. 1/4 OF FRACTIONAL SECTION 13 T.1S. R.11W. S.B. B. & M.

PORTION OF W 1/2 OF N.W. 1/4 OF FRACTIONAL SECTION 18

PALM VALLEY

PALM VALLEY

PALM VALLEY

ST. CENTER

ST. CENTER

(PROPOSED) WALNUT ST. SEE SHEET NO 2

(PROPOSED) WALNUT ST. SEE SHEET NO 2

18
C.F. 1790 -

