

MAP
SHOWING THE LAND TO BE CONDEMNED
FOR THE
WIDENING AND LAYING OUT OF
GRIFFITH PARK BOULEVARD

BETWEEN
LOS FELIZ BOULEVARD
AND
EDGECLIFFE DRIVE
ALSO
THE WIDENING AND LAYING OUT OF
EFFIE STREET
FROM
GRIFFITH PARK BOULEVARD
TO
HYPERION AVENUE

IN THE CITY OF LOS ANGELES CALIF
IN ACCORDANCE WITH ORDINANCES NOS. 57977 AND 65105
JOHN C. SHAW CITY ENGINEER NOVEMBER 1929

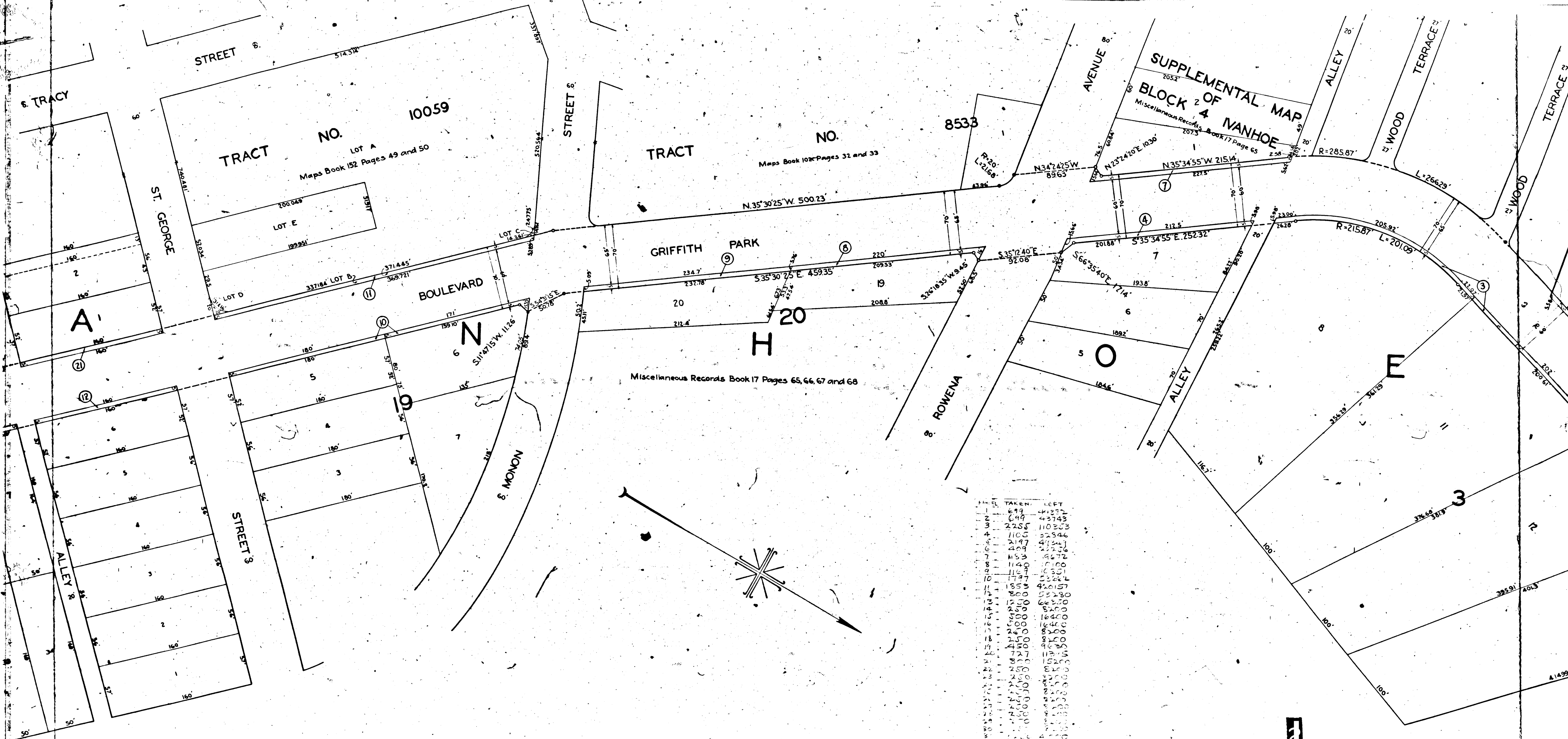


NOTES
LAND TO BE CONDEMNED SHOWN COLORED RED.
DOTTED LINES AND DIMENSIONS SHOW PROPERTY HOLDINGS IN THOSE CASES WHERE
THEY DIFFER FROM THE RECORDED SUBDIVISIONS.
FIGURES IN CIRCLES INDICATE THE PARCEL NUMBERS AS SET FORTH IN PARAGRAPH IX
OF THE COMPLAINT.

SH: 40
2
Superior Court Case No. 300081
Suit for Condemnation
Filed Apr. 1st 1930
City of Los Angeles, Plaintiff
Vs
W. P. Chapman et al., Defendants
Case dismissed Oct. 7th 1930.

A-5758

W-100

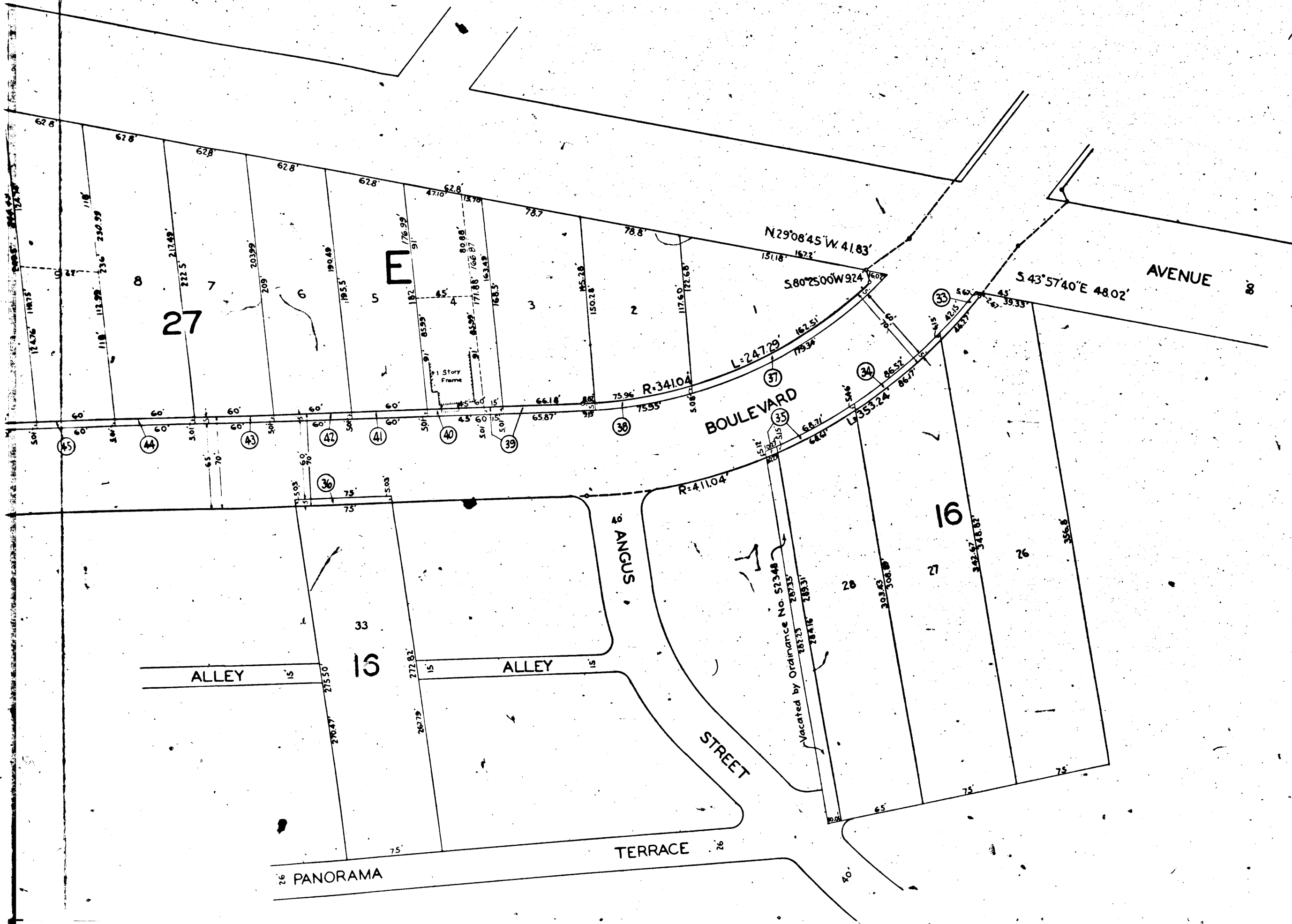


Miscellaneous Records Book 17 Pages 65, 66, 67 and 68

NO.	TAKEN	LEFT
1	699	41237
2	699	43743
3	2255	110353
4	1105	52546
5	2197	47241
6	409	27276
7	1163	19272
8	1140	10350
9	1167	10350
10	1797	10350
11	1853	42019
12	8000	58280
13	15200	66300
14	25000	84000
15	30000	104000
16	50000	164000
17	25000	164000
18	25000	164000
19	45000	164000
20	7277	152000
21	8000	152000
22	25000	152000
23	25000	152000
24	25000	152000
25	25000	152000
26	25000	152000
27	25000	152000
28	25000	152000
29	25000	152000
30	25000	152000
31	25000	152000
32	25000	152000

4





8272-A

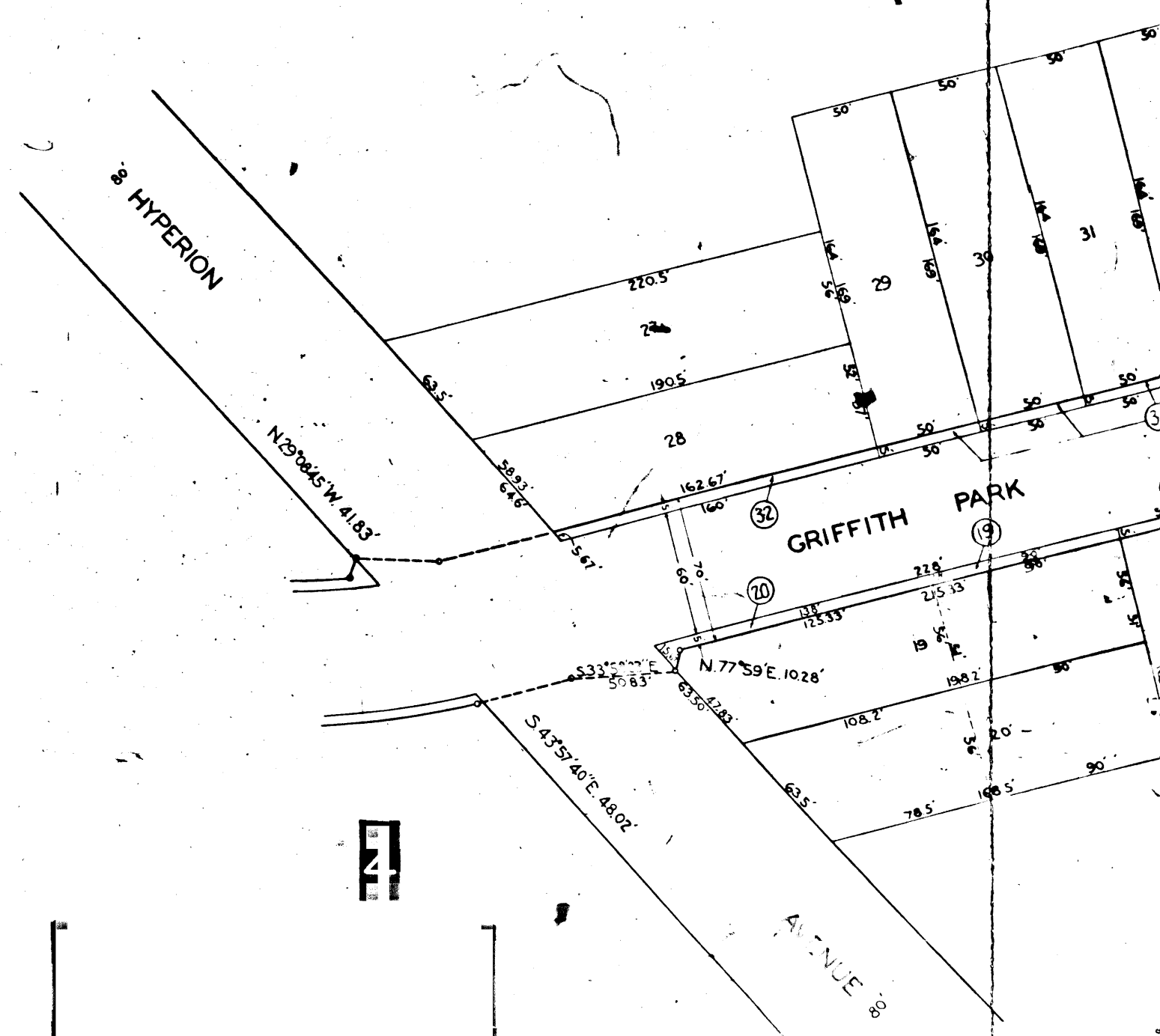
8272-A

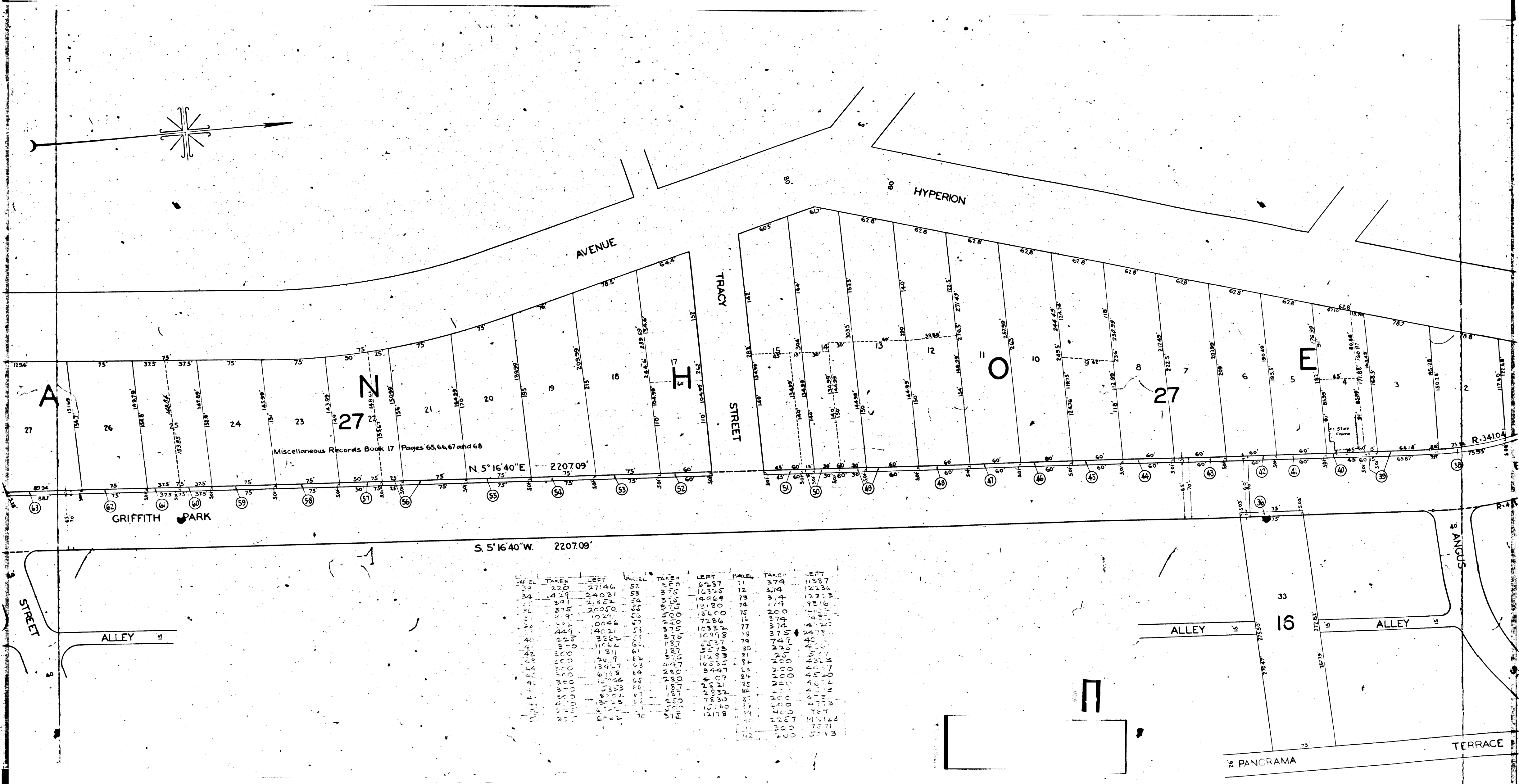
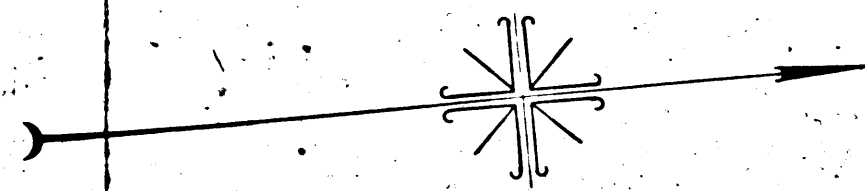
FOR CONTINUATION SEE SHEET 1

FOR CONTINUATION SEE SHEET 2

A-2123

A-2123





Miscellaneous Records Book 17 Pages 65, 66, 67 and 68

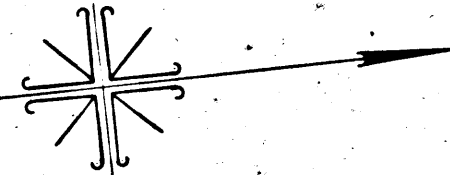
S. 5° 16' 40" W. 2207.09'

PARCEL	TAKEN	LEFT	PARCEL	TAKEN	LEFT
32	220	27146	52	6237	71
34	429	24031	53	16325	72
35	391	23552	54	14064	73
36	315	20050	55	12180	74
37	229	10241	56	15000	75
38	222	10246	57	7286	76
39	222	14021	58	10337	77
40	000	3867	59	10998	78
41	000	11667	60	5527	79
42	000	13679	61	5837	80
43	000	17108	62	16088	81
44	000	17044	63	22000	82
45	000	17044	64	22000	83
46	000	17044	65	22000	84
47	000	17044	66	22000	85
48	000	17044	67	22000	86
49	000	17044	68	22000	87
50	000	17044	69	22000	88
51	000	17044	70	22000	89
52	000	17044	71	22000	90

20 PANORAMA

TERRACE

HYPERON



DANIELS

AVENUE S

LYRIC

30 S

SCOTLAND

A

27 N

Miscellaneous Records Book 17 Pages 65, 66, 67 and 68

BOULEVARD

GRIFFITH PARK

31

Fractional 12

ALLEY

COURT

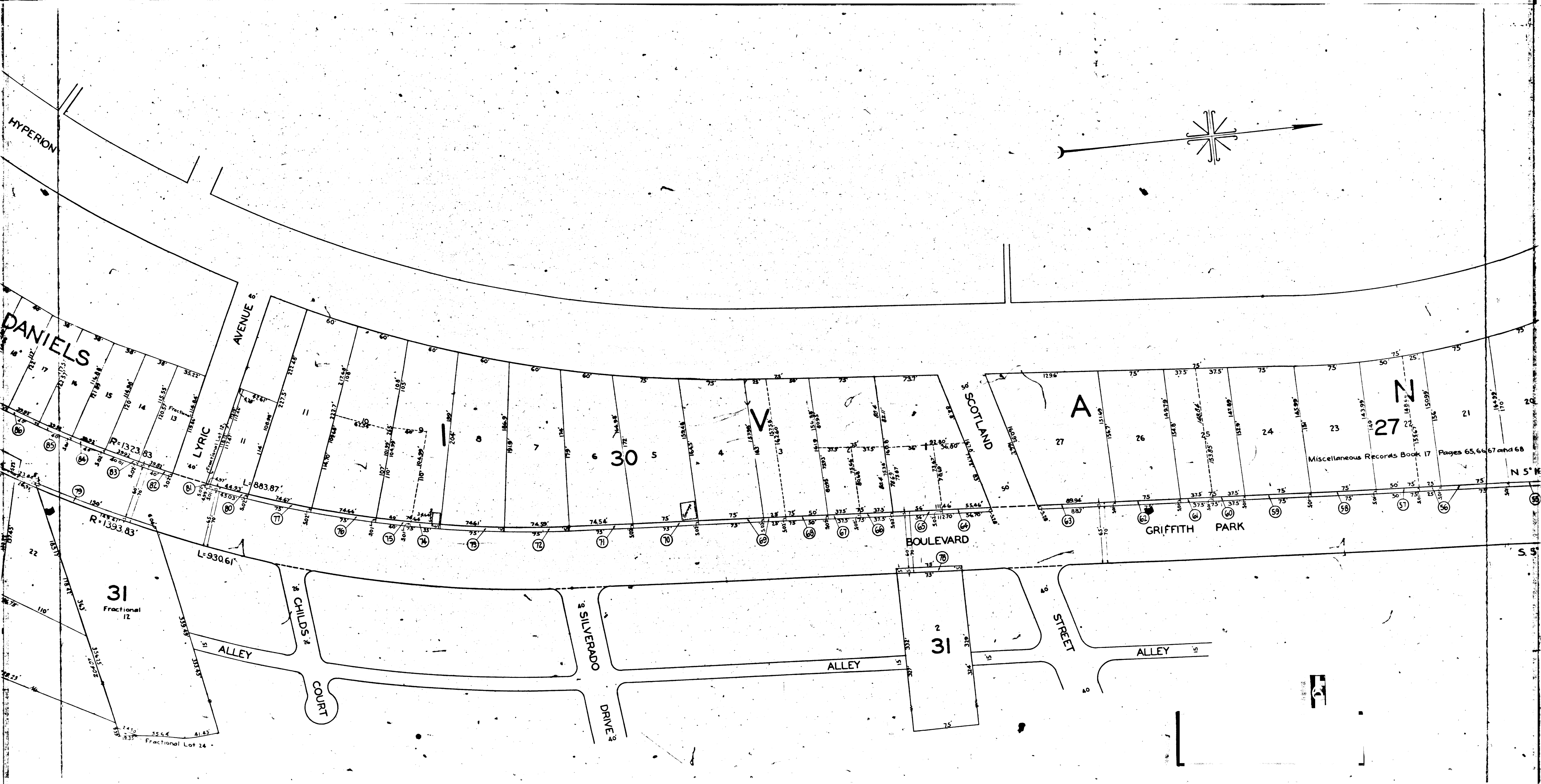
SILVERADO DRIVE S

ALLEY

31

STREET

ALLEY



FOR CONTINUATION SEE SHEET 2

FOR CONTINUATION SEE SHEET 3

AVENUE 3

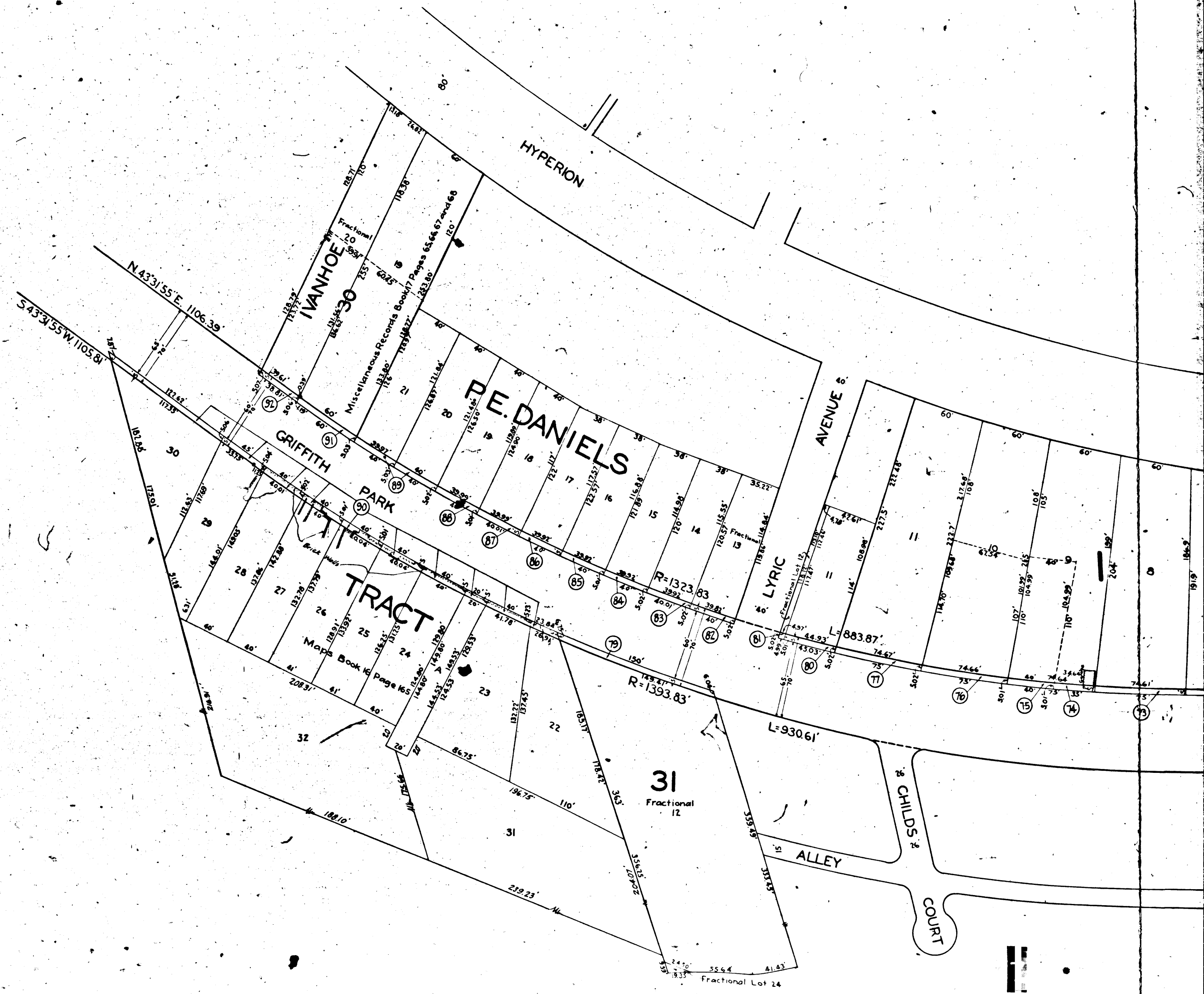
BOULEVARD 3

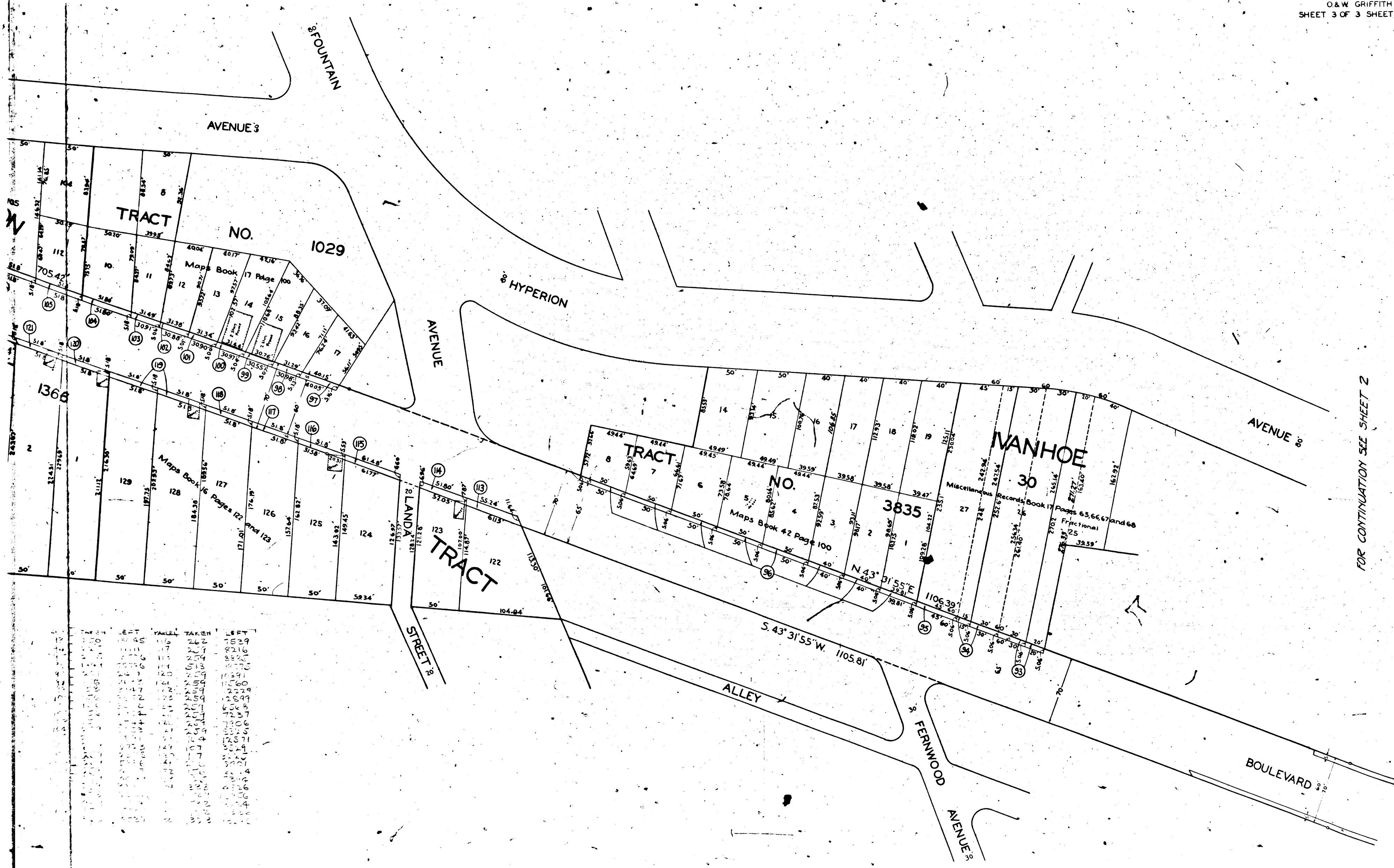
8272-A

8272-A

A-2128

A-2128





FOR CONTINUATION SEE SHEET 2

LEFT	TAKEN	RIGHT
12	12	12
13	13	13
14	14	14
15	15	15
16	16	16
17	17	17
18	18	18
19	19	19
20	20	20
21	21	21
22	22	22
23	23	23
24	24	24
25	25	25
26	26	26
27	27	27
28	28	28
29	29	29
30	30	30
31	31	31
32	32	32
33	33	33
34	34	34
35	35	35
36	36	36
37	37	37
38	38	38
39	39	39
40	40	40
41	41	41
42	42	42
43	43	43
44	44	44
45	45	45
46	46	46
47	47	47
48	48	48
49	49	49
50	50	50
51	51	51
52	52	52
53	53	53
54	54	54
55	55	55
56	56	56
57	57	57
58	58	58
59	59	59
60	60	60
61	61	61
62	62	62
63	63	63
64	64	64
65	65	65
66	66	66
67	67	67
68	68	68
69	69	69
70	70	70
71	71	71
72	72	72
73	73	73
74	74	74
75	75	75
76	76	76
77	77	77
78	78	78
79	79	79
80	80	80
81	81	81
82	82	82
83	83	83
84	84	84
85	85	85
86	86	86
87	87	87
88	88	88
89	89	89
90	90	90
91	91	91
92	92	92
93	93	93
94	94	94
95	95	95
96	96	96
97	97	97
98	98	98
99	99	99
100	100	100
101	101	101
102	102	102
103	103	103
104	104	104
105	105	105
106	106	106
107	107	107
108	108	108
109	109	109
110	110	110
111	111	111
112	112	112
113	113	113
114	114	114
115	115	115
116	116	116
117	117	117
118	118	118
119	119	119
120	120	120
121	121	121
122	122	122
123	123	123
124	124	124
125	125	125
126	126	126
127	127	127
128	128	128
129	129	129
130	130	130
131	131	131
132	132	132
133	133	133
134	134	134
135	135	135
136	136	136
137	137	137
138	138	138
139	139	139
140	140	140
141	141	141
142	142	142
143	143	143
144	144	144
145	145	145
146	146	146
147	147	147
148	148	148
149	149	149
150	150	150

8212-A

A-12

HYPERION

FOUNTAIN

AVENUE 3

HEIGHTS 5

Vacated by Ordinance No. 8484 (New Series)

Fractional 15

Fractional 16

BOULEVARD

EFFIE STREET

Vacated by Ordinance No. 13911 (New Series)

GRIFFITH PARK

HYPERION TRACT NO. 1029

NO. 1029

AVENUE

HYPERION

Fractional 13 TRACT

NO. 1366

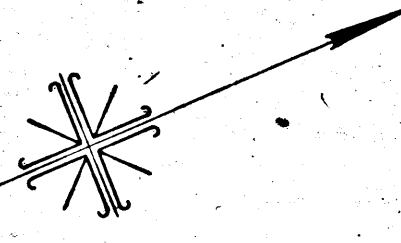
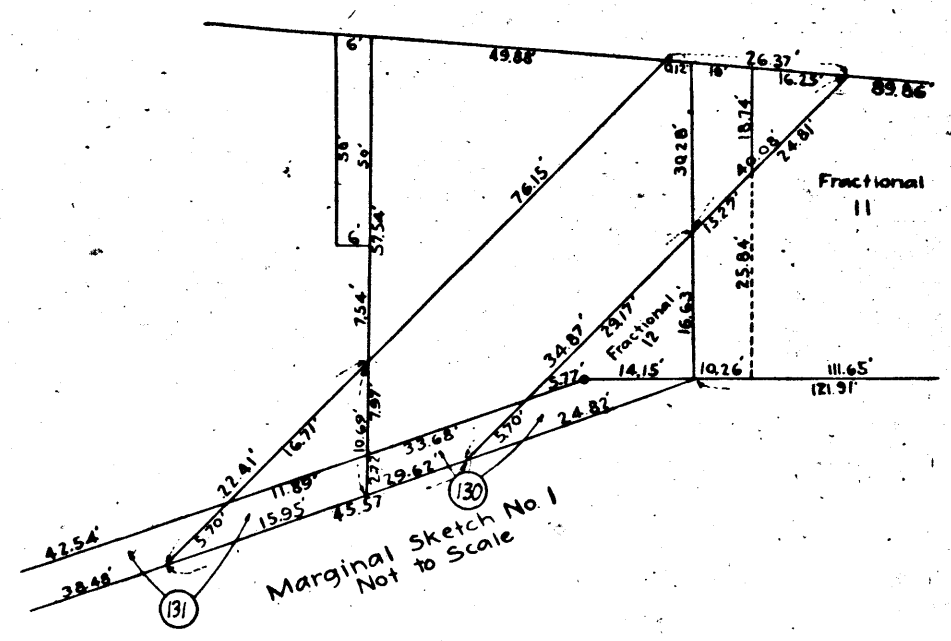
1366

AVENUE 3

Fractional 11

LANDA STREET

STREET B



FILE	TAKEN	LEFT	TAKEN	LEFT
12	220	180	220	180
13	220	180	220	180
14	220	180	220	180
15	220	180	220	180
16	220	180	220	180
17	220	180	220	180
18	220	180	220	180
19	220	180	220	180
20	220	180	220	180
21	220	180	220	180
22	220	180	220	180
23	220	180	220	180
24	220	180	220	180
25	220	180	220	180
26	220	180	220	180
27	220	180	220	180
28	220	180	220	180
29	220	180	220	180
30	220	180	220	180
31	220	180	220	180
32	220	180	220	180
33	220	180	220	180
34	220	180	220	180
35	220	180	220	180
36	220	180	220	180
37	220	180	220	180
38	220	180	220	180
39	220	180	220	180
40	220	180	220	180
41	220	180	220	180
42	220	180	220	180
43	220	180	220	180
44	220	180	220	180
45	220	180	220	180
46	220	180	220	180
47	220	180	220	180
48	220	180	220	180
49	220	180	220	180
50	220	180	220	180
51	220	180	220	180
52	220	180	220	180
53	220	180	220	180
54	220	180	220	180
55	220	180	220	180
56	220	180	220	180
57	220	180	220	180
58	220	180	220	180
59	220	180	220	180
60	220	180	220	180
61	220	180	220	180
62	220	180	220	180
63	220	180	220	180
64	220	180	220	180
65	220	180	220	180
66	220	180	220	180
67	220	180	220	180
68	220	180	220	180
69	220	180	220	180
70	220	180	220	180
71	220	180	220	180
72	220	180	220	180
73	220	180	220	180
74	220	180	220	180
75	220	180	220	180
76	220	180	220	180
77	220	180	220	180
78	220	180	220	180
79	220	180	220	180
80	220	180	220	180
81	220	180	220	180
82	220	180	220	180
83	220	180	220	180
84	220	180	220	180
85	220	180	220	180
86	220	180	220	180
87	220	180	220	180
88	220	180	220	180
89	220	180	220	180
90	220	180	220	180
91	220	180	220	180
92	220	180	220	180
93	220	180	220	180
94	220	180	220	180
95	220	180	220	180
96	220	180	220	180
97	220	180	220	180
98	220	180	220	180
99	220	180	220	180
100	220	180	220	180
101	220	180	220	180
102	220	180	220	180
103	220	180	220	180
104	220	180	220	180
105	220	180	220	180
106	220	180	220	180
107	220	180	220	180
108	220	180	220	180
109	220	180	220	180
110	220	180	220	180
111	220	180	220	180
112	220	180	220	180
113	220	180	220	180
114	220	180	220	180
115	220	180	220	180
116	220	180	220	180
117	220	180	220	180
118	220	180	220	180
119	220	180	220	180
120	220	180	220	180
121	220	180	220	180
122	220	180	220	180
123	220	180	220	180
124	220	180	220	180
125	220	180	220	180
126	220	180	220	180
127	220	180	220	180
128	220	180	220	180
129	220	180	220	180
130	220	180	220	180
131	220	180	220	180
132	220	180	220	180
133	220	180	220	180
134	220	180	220	180
135	220	180	220	180
136	220	180	220	180
137	220	180	220	180
138	220	180	220	180
139	220	180	220	180
140	220	180	220	180
141	220	180	220	180
142	220	180	220	180
143	220	180	220	180
144	220	180	220	180
145	220	180	220	180
146	220	180	220	180
147	220	180	220	180
148	220	180	220	180
149	220	180	220	180
150	220	180	220	180

DRIVE 3

