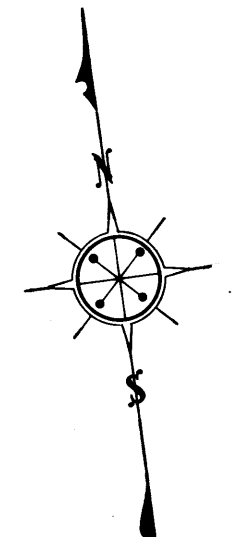


INDEX 7
 Superior Court Case No 300828
 Suit for Condemnation
 Filed April 12th 1930
 City of Huntington Park, Plaintiff.
 Vs.
 George F. Benson et al. Def.
 Case dismissed July 11th 1933



Scale: 1" = 150'

IN THE MATTER OF
ACQUISITION & IMPROVEMENT DISTRICT No 1
OF THE CITY OF HUNTINGTON PARK

Land to be Condemned for the Acquisition of
HUNTINGTON AVENUE
 FROM CALIFORNIA AVENUE TO SALT LAKE AVENUE, ALSO
FLOWER STREET
 FROM CALIFORNIA AVENUE TO SALT LAKE AVENUE, ALSO
GRAND AVENUE
 FROM CALIFORNIA AVENUE TO SALT LAKE AVENUE, ALSO
HILL STREET
 FROM WESTERLY LINE OF TRACT No 2599, MB 26-50 TO SALT LAKE AVENUE AND
CUDAHY STREET
 FROM STATE STREET TO OTIS STREET

PLAN No 519

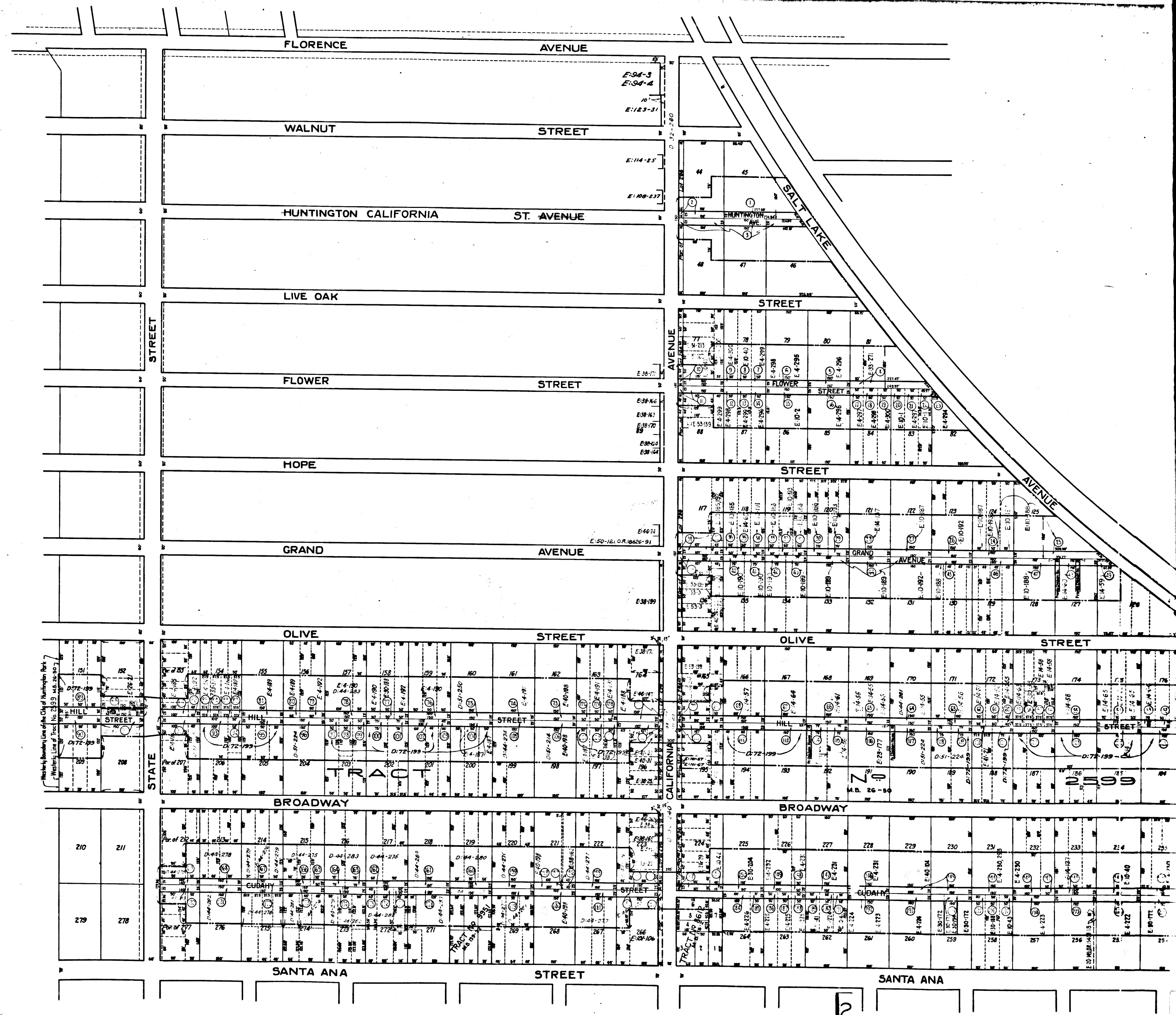
Howard M. Curdy, Engineer.

LEGEND
 Land to be condemned is shown colored thus:
 Parcel Numbers are shown in circles, thus: 10
 Boundary Line of Assessment District is shown thus:

C.F. 1792 -

63-282-1A
SOUTH

SCALE
WEST



2
C.F. 1792 -