

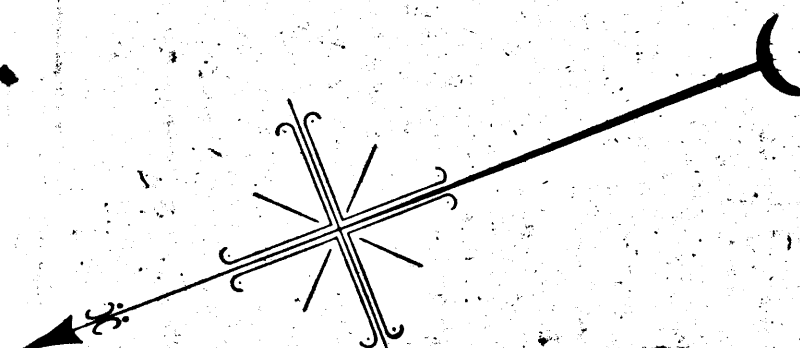
Sht. 2

Superior Court Case No. 284694  
Suit for Condemnation  
Filed July 29<sup>th</sup> 1929  
City of Los Angeles, Plaintiff  
vs  
Hector McNeill et al., Def.

Note:- There was no map filed  
with this case in Clerk's Office.  
Interlocutory judgment as per  
map, rendered June 28<sup>th</sup> 1930.  
Judg. Bk. 753-256.

Final judgment in favor of Pl'tff. as  
per map, rendered July 29, 1930.

D:79-246, O.R. 10166-272.




**MAP**  
SHOWING THE LAND TO BE CONDEMNED  
FOR THE WIDENING OF  
**GLENDALE BOULEVARD**  
ADJACENT TO THE NORTHWESTERLY SIDE THEREOF  
BETWEEN  
**SUNSET BOULEVARD AND PARK AVENUE**  
IN THE  
**CITY OF LOS ANGELES CAL.**  
IN ACCORDANCE WITH ORDINANCE NO. 63891

JOHN C. SHAW CITY ENGINEER. MAY 1929

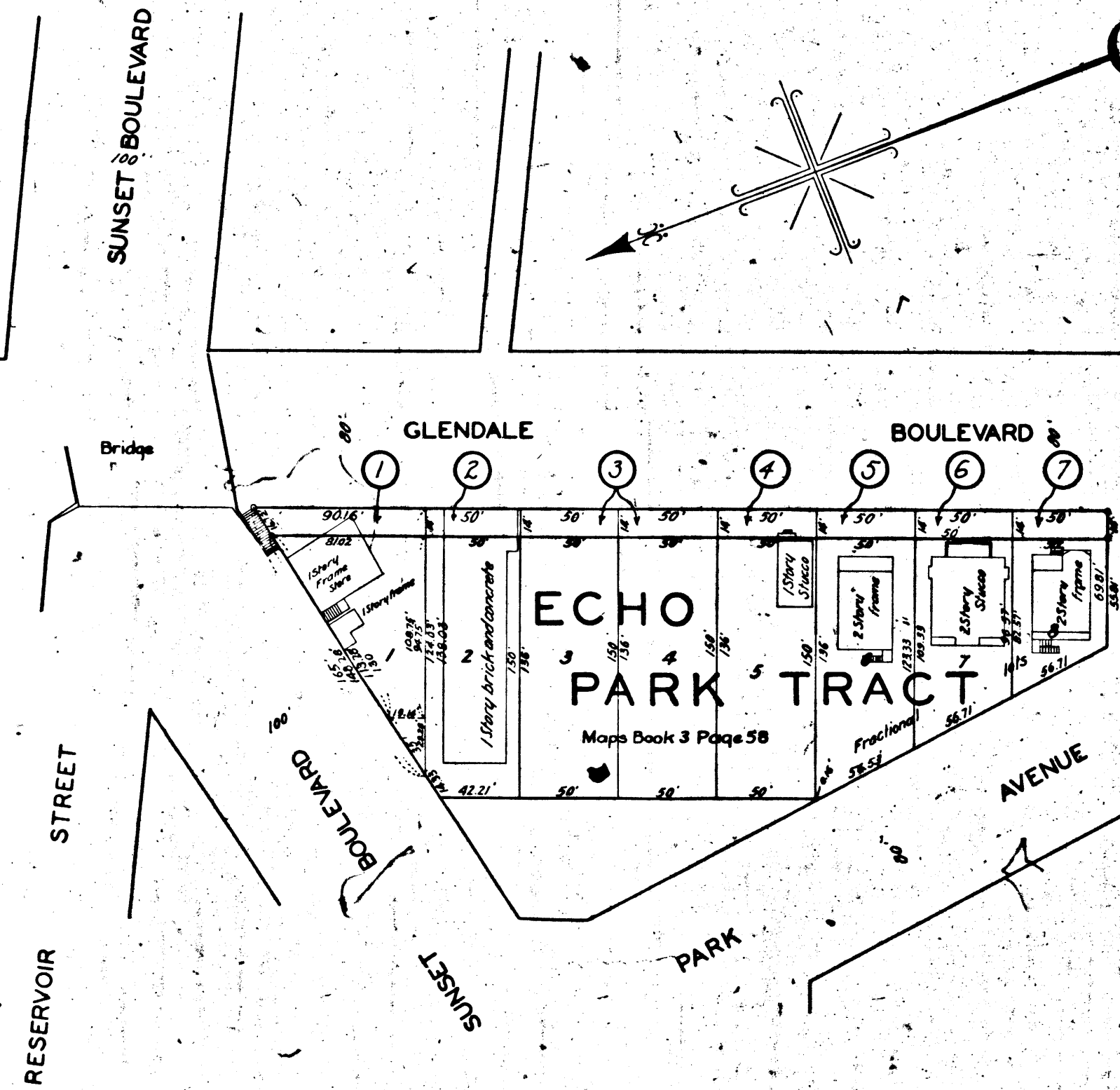
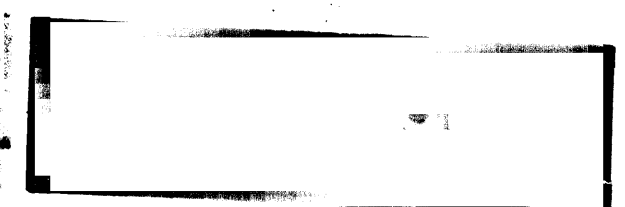
SCALE 1 INCH = 50 FEET

NOTE: LAND TO BE CONDEMNED SHOWN COLORED RED.  
DOTTED LINES AND FIGURES SHOW WHERE  
HOLDINGS DIFFER FROM RECORDED SUBDIVISION.

NOTE: FIGURES IN CIRCLES INDICATE  
THE PARCEL NUMBERS AS SET FORTH  
IN PARAGRAPH 3 OF THE COMPLAINT.

CALCULATIONS BY RICHMOND  
CHECKED BY HOYT  
APPROVED  ENGR. STREET & A.W. DIV.

67238



201C-A

A-2103