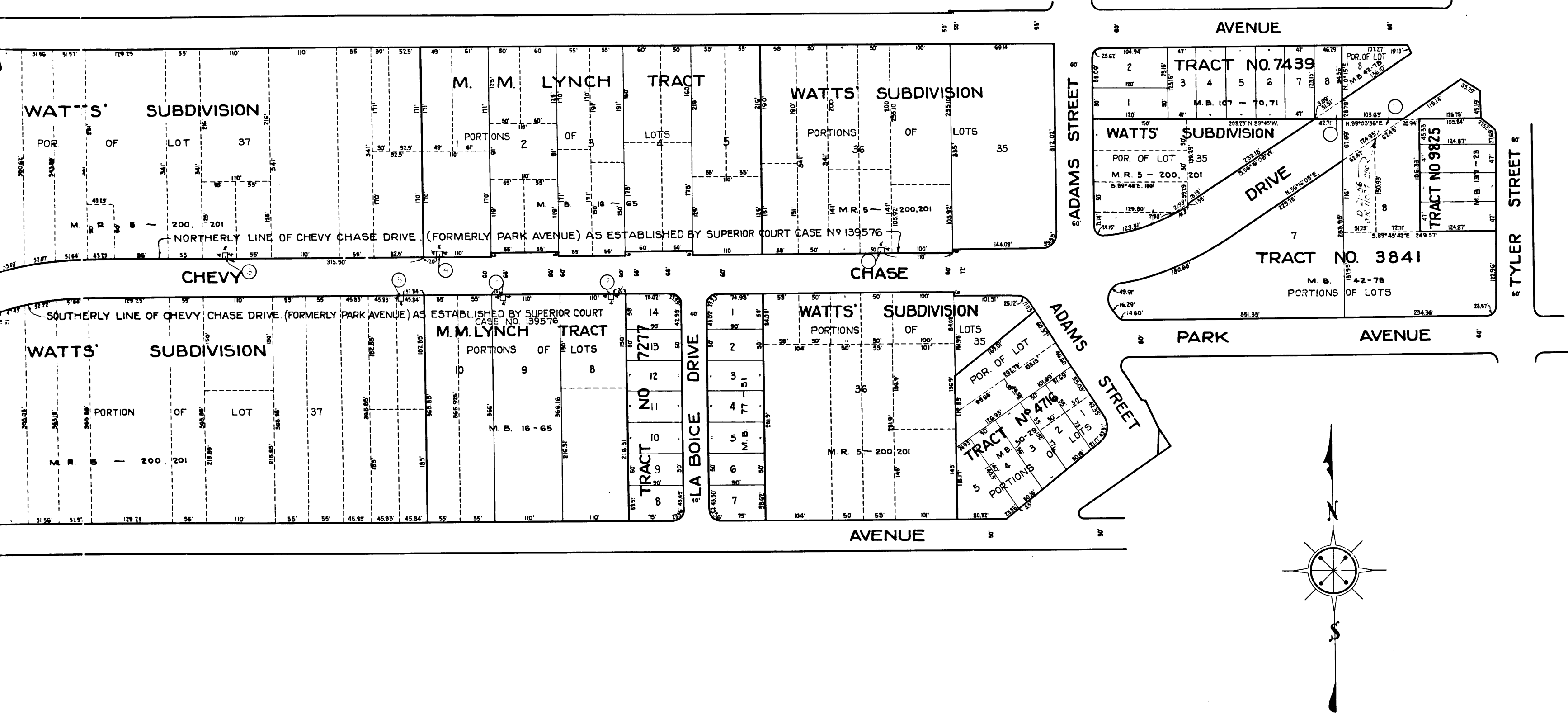


Sh. 41
 Superior Court Case No. 303190
 Suit for Condemnation
 Filed May 26, 1930
 City of Glendale, Pltff.
 Vs
 Frank Reymann et al. Def.

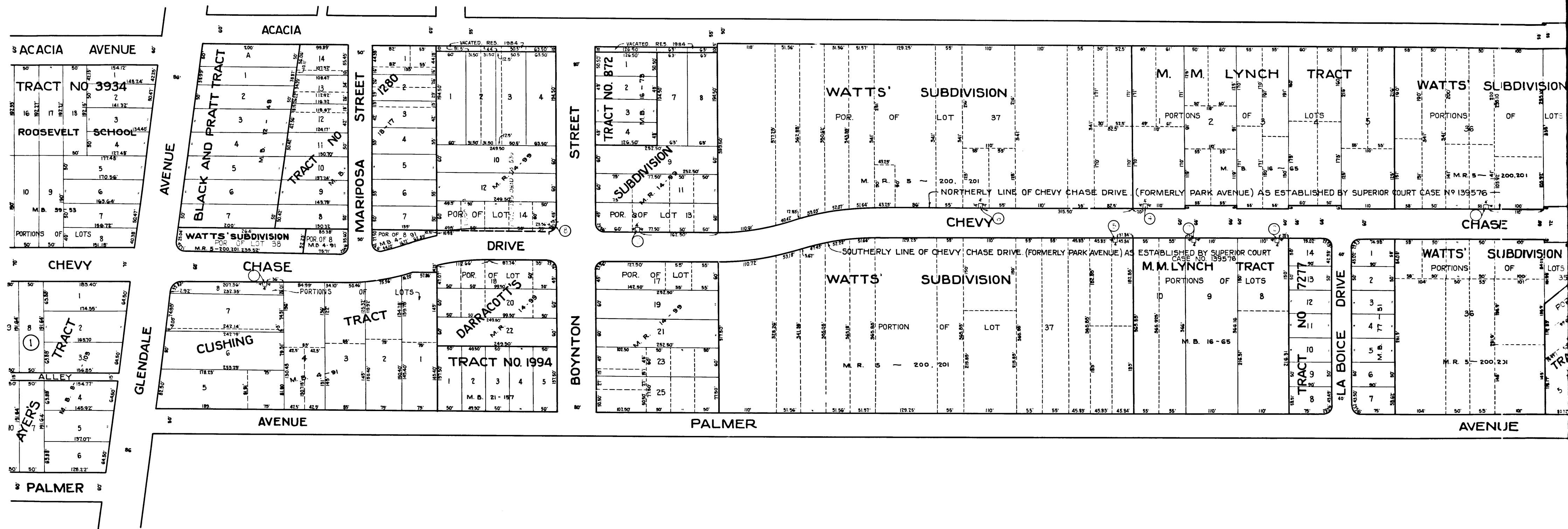
Order authorizing Plaintiff to take immediate possession rendered May 26th 1930. Interlocutory judgment as to parcels 1 to 10 rendered Oct. 15th 1931. Jud. 53, 796-16. Final judgment in favor of Pltff. as to parcels 1 to 10 incl. rendered December 12th 1931.
 D.21-131 OR 1162-369



LEGEND
 [Symbol: rectangle with circle] INDICATES LAND TO BE CONDEMNED
 [Symbol: circle with dot] PARCEL NUMBERS IN COMPLAINT

EXHIBIT 'A'
 SHOWING LAND TO BE CONDEMNED FOR STREET AND HIGHWAY PURPOSES ON
CHEVY CHASE DRIVE
 IN THE CITY OF
GLENDAL, CALIFORNIA.
 SCALE: 1" = 100' MAY 1930

C.F. 1802 -



2

C.F. 1802 -