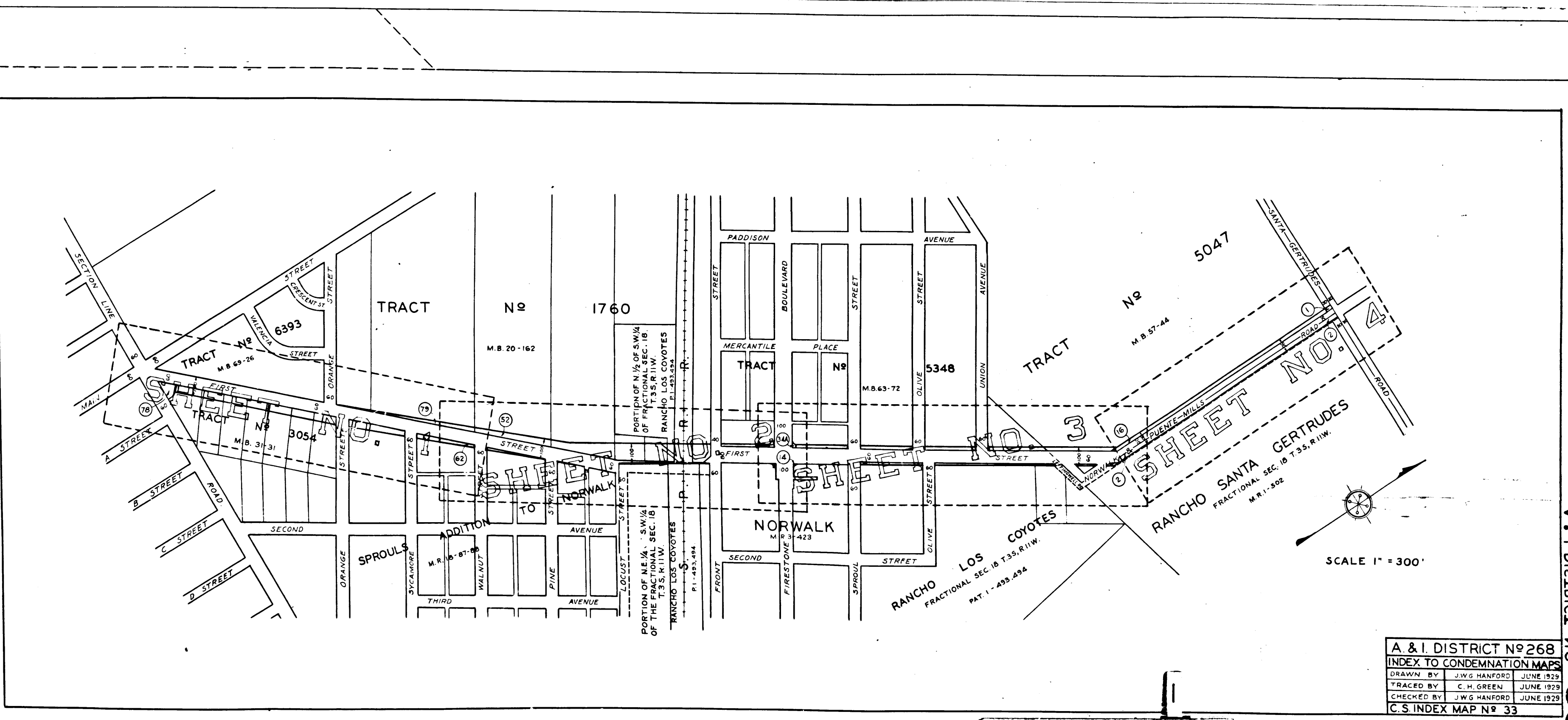


Sht 33
 Court Case No 361909
 For Condemnation
 of Lot 134, 135, 136
 of Los Angeles, Flt. & P.
 Vs
 J. Ascock et al, Defs.
 Entered Dec 19, 1934

508 ON TIRITID I & A
 INDEX TO CONDEMNATION MAPS
 FOR THE CITY OF LOS ANGELES
 DISTRICT NO. 268
 508 INDEX TO CONDEMNATION MAPS
 FOR THE CITY OF LOS ANGELES
 DISTRICT NO. 268



A & I. DISTRICT NO 268	
INDEX TO CONDEMNATION MAPS	
DRAWN BY	J.W.G. HANFORD JUNE 1929
TRACED BY	C.H. GREEN JUNE 1929
CHECKED BY	J.W.G. HANFORD JUNE 1929
C.S. INDEX MAP NO 33	

C.F. 1803 -

508 ON TIRITID I & A
 INDEX TO CONDEMNATION MAPS
 FOR THE CITY OF LOS ANGELES
 DISTRICT NO. 268
 508 INDEX TO CONDEMNATION MAPS
 FOR THE CITY OF LOS ANGELES
 DISTRICT NO. 268

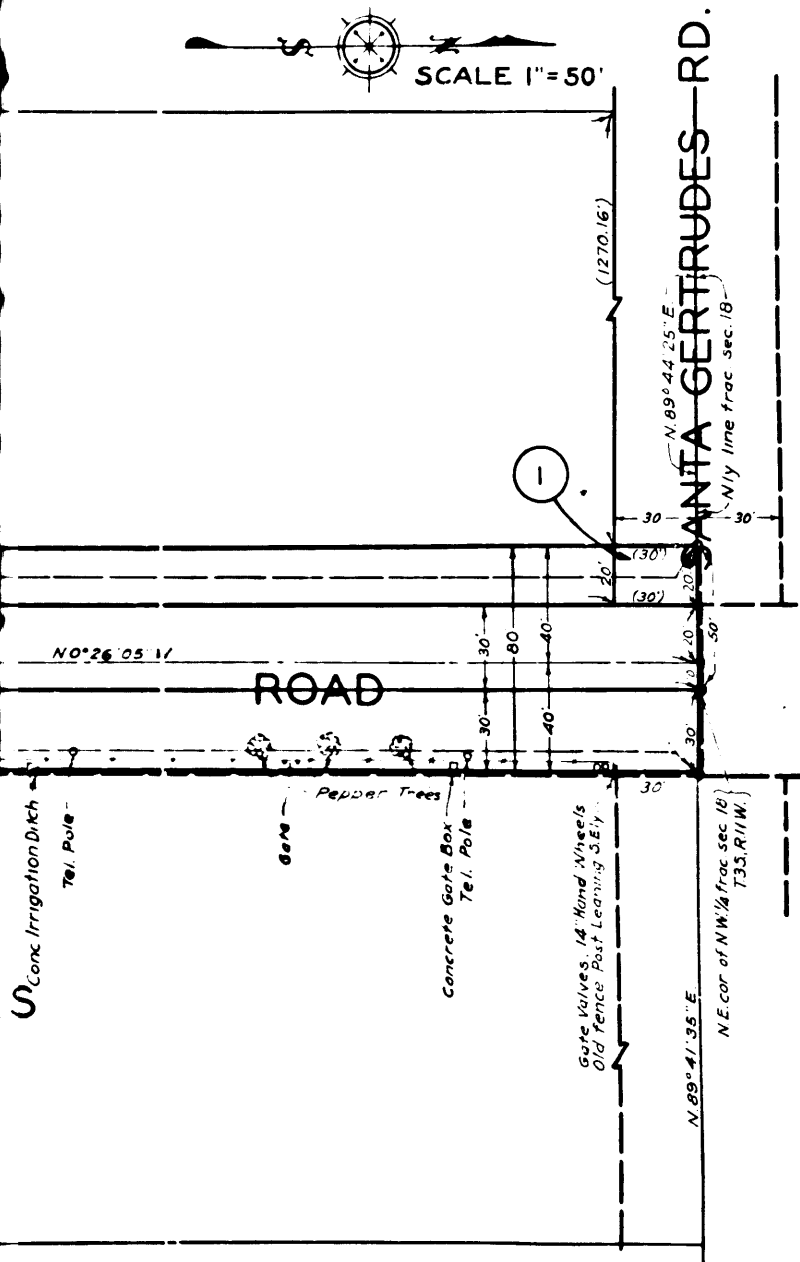


EXHIBIT "A"
 ACQUISITION AND IMPROVEMENT DISTRICT NO. 268
 OF THE COUNTY OF LOS ANGELES
 FOR
 THE OPENING, WIDENING AND EXTENDING OF
 FIRST STREET
 AND THE WIDENING OF
 NORWALK AND PUENTE MILLS ROAD

MAP SHOWING PROPERTY TO BE ACQUIRED, IN ACCORDANCE WITH THE PROVISIONS OF THE ACQUISITION AND IMPROVEMENT ACT OF 1925. APPROVED MAY 23, 1925. COMMONLY KNOWN AS THE "MATTOON ACT."
 SCALE: 1" = 50'. APRIL, 1930.

J. E. ROCKHOLD — COUNTY SURVEYOR
 SUBMITTED: *Alfred Jones* APPROVED: *J. E. Rockhold*
 ALFRED JONES, CHIEF DEPUTY. J. E. ROCKHOLD, COUNTY SURVEYOR.

APPROVED AS TO FORM:
 EVERETT W. MATTOON, COUNTY COUNSEL.

Everett W. Mattoon
 DEPUTY COUNTY COUNSEL.

LEGEND
 PORTION COLORED RED SHOWS LOCATION, GENERAL ROUTE AND TERMINI OF LAND IN WHICH AN EASEMENT FOR PUBLIC HIGHWAY PURPOSES IS SOUGHT TO BE ACQUIRED.
 NUMBERS IN CIRCLES INDICATE PARCELS SOUGHT TO BE CONDEMNED.
 THE PARCELS ARE DESCRIBED IN PARAGRAPH VII OF THE COMPLAINT.
 FIGURES SHOWN IN PARENTHESES () ARE EITHER RECORD DISTANCES OR ARE CALCULATED FROM RECORD DISTANCES.

Note: Parcels N^o 5 & 44 have been omitted.

Negative of this map filed in Blue Print Dept. as Negative No. 100 (Dis. Index)

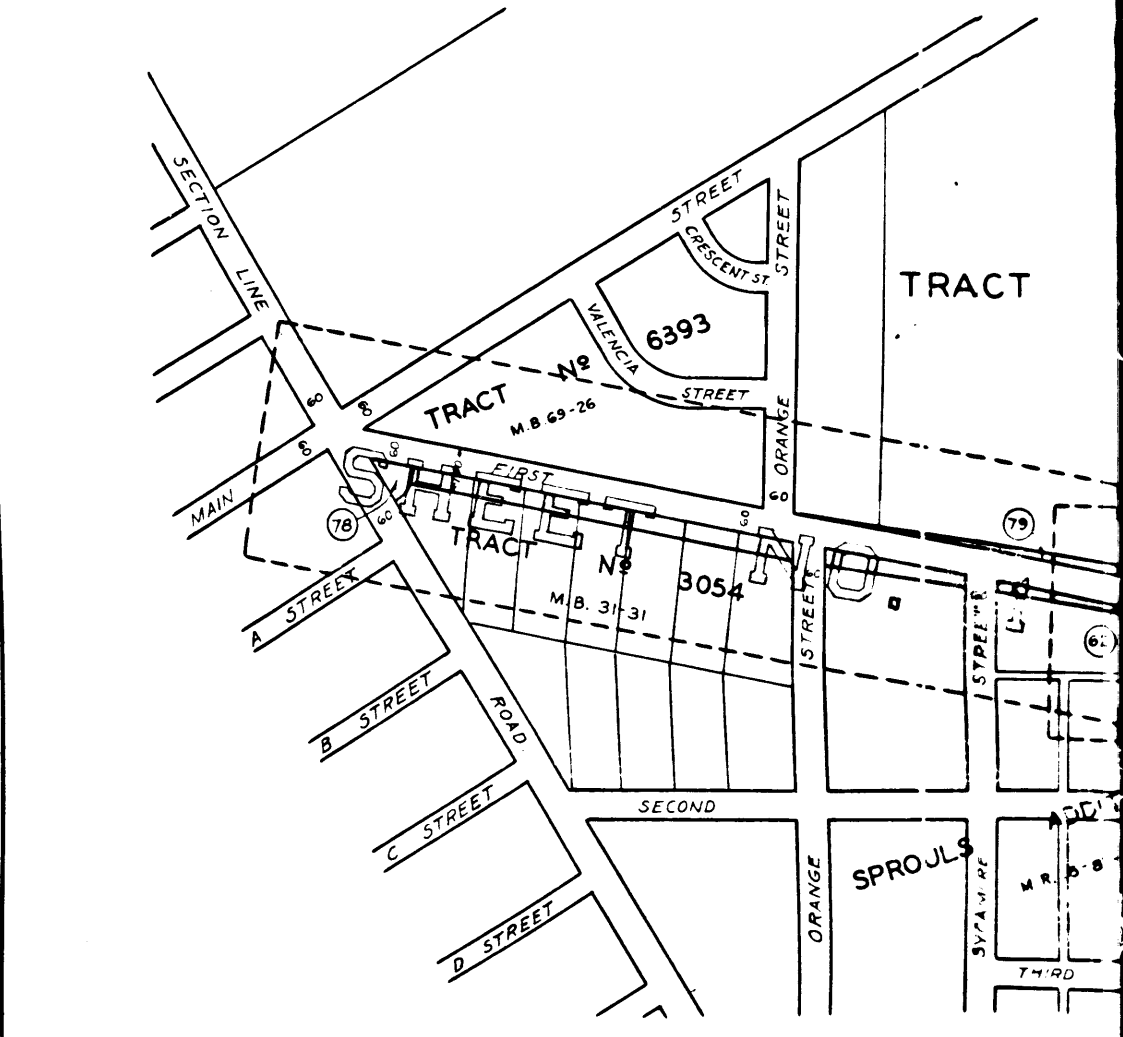
A & I DISTRICT NO. 268			
SHEET NO. 4 OF 4 SHEETS			
DRAWN BY	C. H. GREEN	MAY 1929	
TRACED BY	C. H. GREEN	MAY 1927	
CHECKED BY	C. R. LEWIS	JUNE 1929	
C.S. INDEX MAP NO. 33			

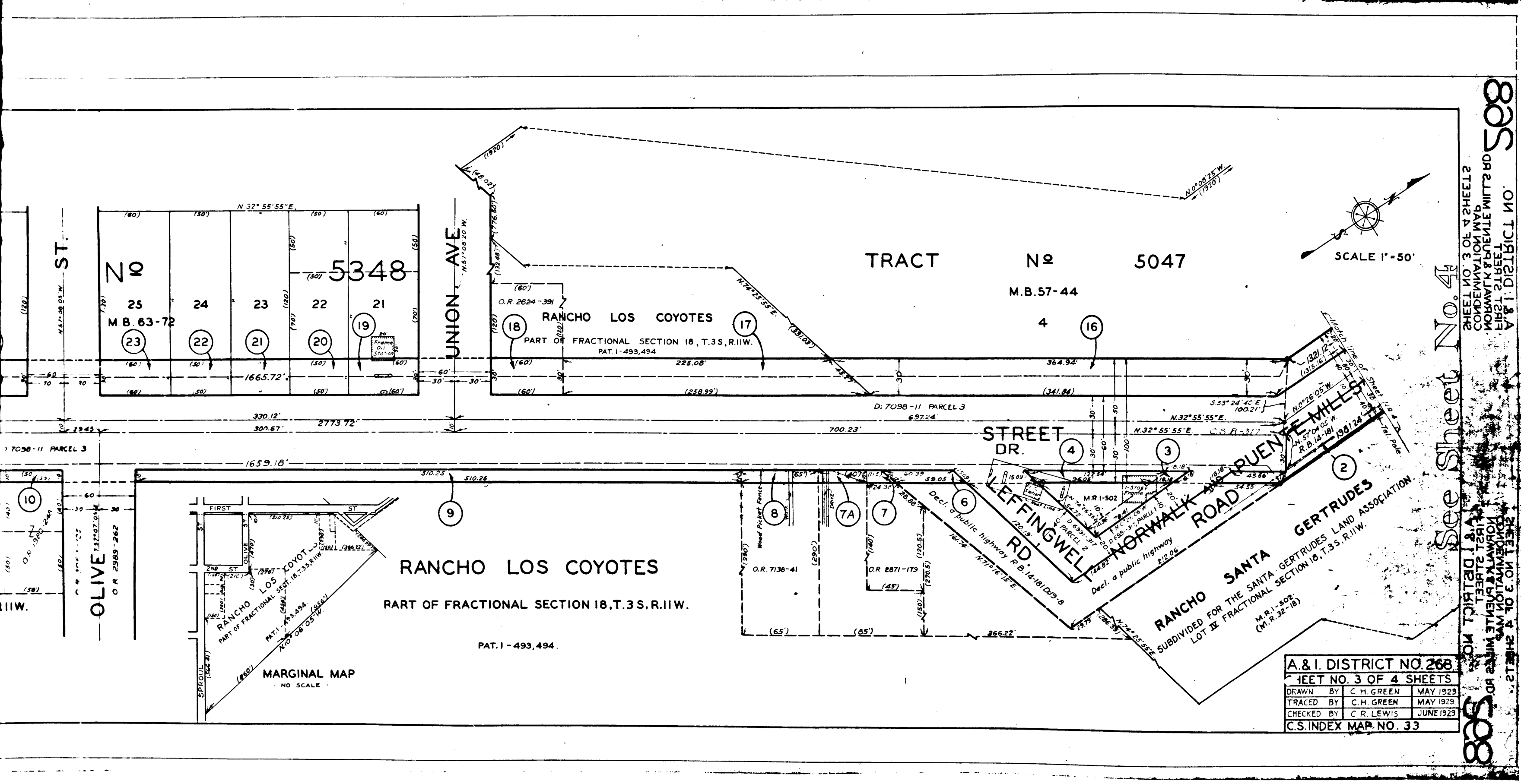
SHEET NO. 4 OF 4 SHEETS
 COMMISSION MAP NO. 11803
 DISTRICT NO. 268
 A & I DISTRICT NO. 268

Sht 33
 Superior Court Case No. 301989
 Suit for Condemnation
 Filed May 2nd 1930
 County of Los Angeles, Plff.
 Vs
 Robert J. Adcock et al, Def.
 Case dismissed Dec. 19, 1934.

C. F. 1803 -

SHEET NO. 4 OF 4 SHEETS
 COMMISSION MAP NO. 11803
 DISTRICT NO. 268
 A & I DISTRICT NO. 268



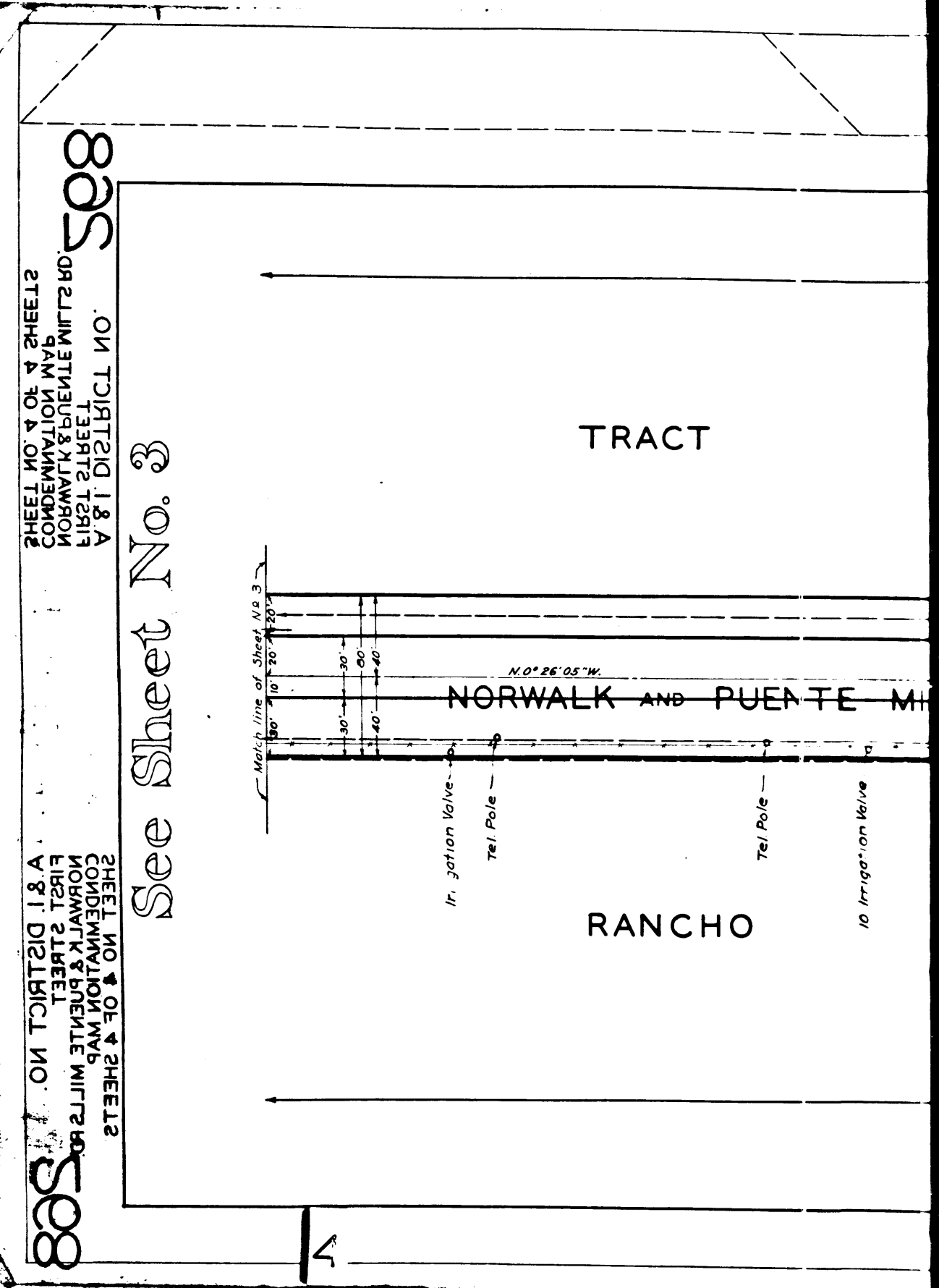


SHEET NO. 3 OF 4 SHEETS
 COMMISSIONERS OF LANDS AND SURVEYS
 A & I DISTRICT NO. 268
 SHEET NO. 3 OF 4 SHEETS
 COMMISSIONERS OF LANDS AND SURVEYS
 A & I DISTRICT NO. 268

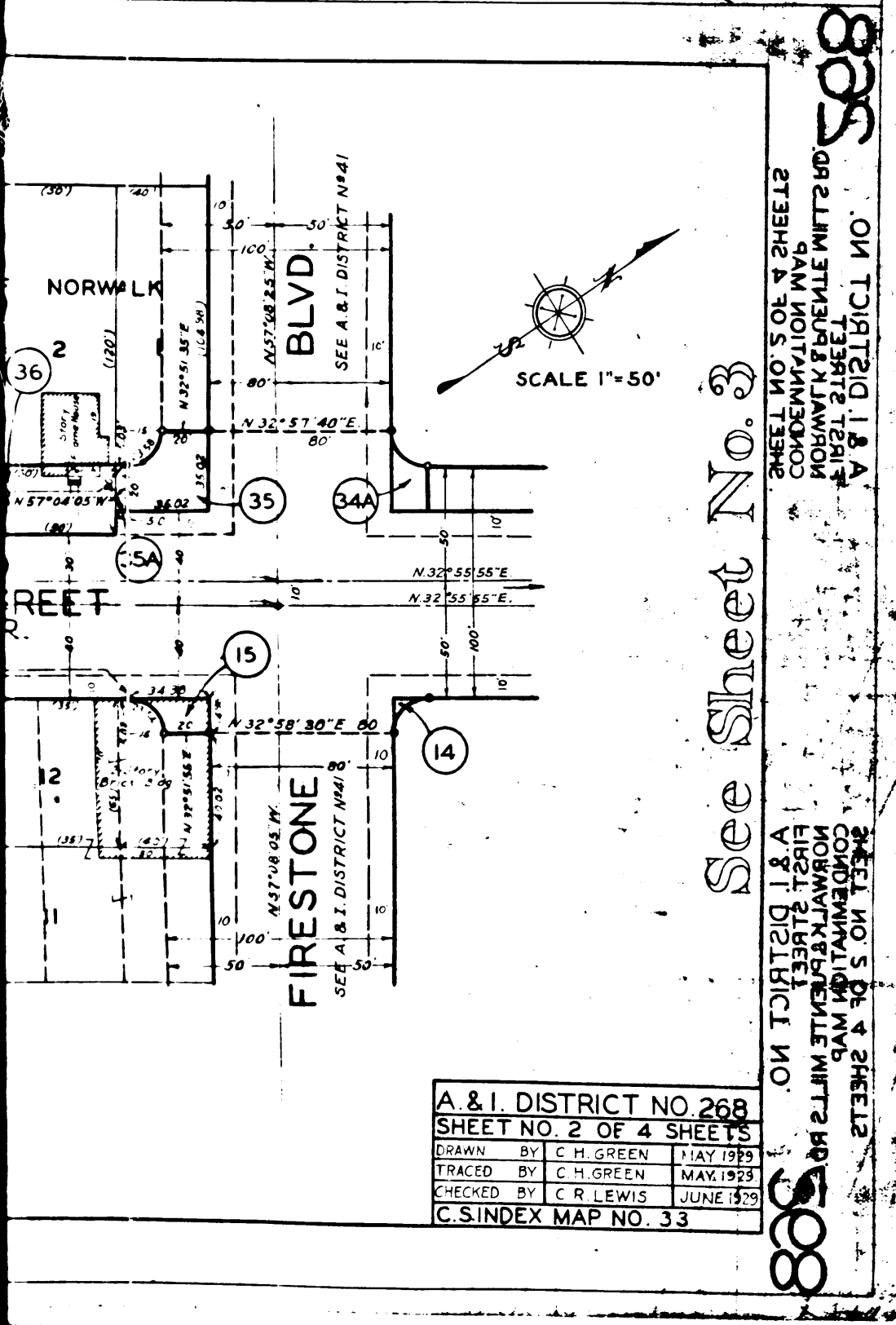
A. & I. DISTRICT NO. 268
SHEET NO. 3 OF 4 SHEETS

DRAWN BY	C. H. GREEN	MAY 1929
TRACED BY	C. H. GREEN	MAY 1929
CHECKED BY	C. R. LEWIS	JUNE 1929

C.S. INDEX MAP NO. 33

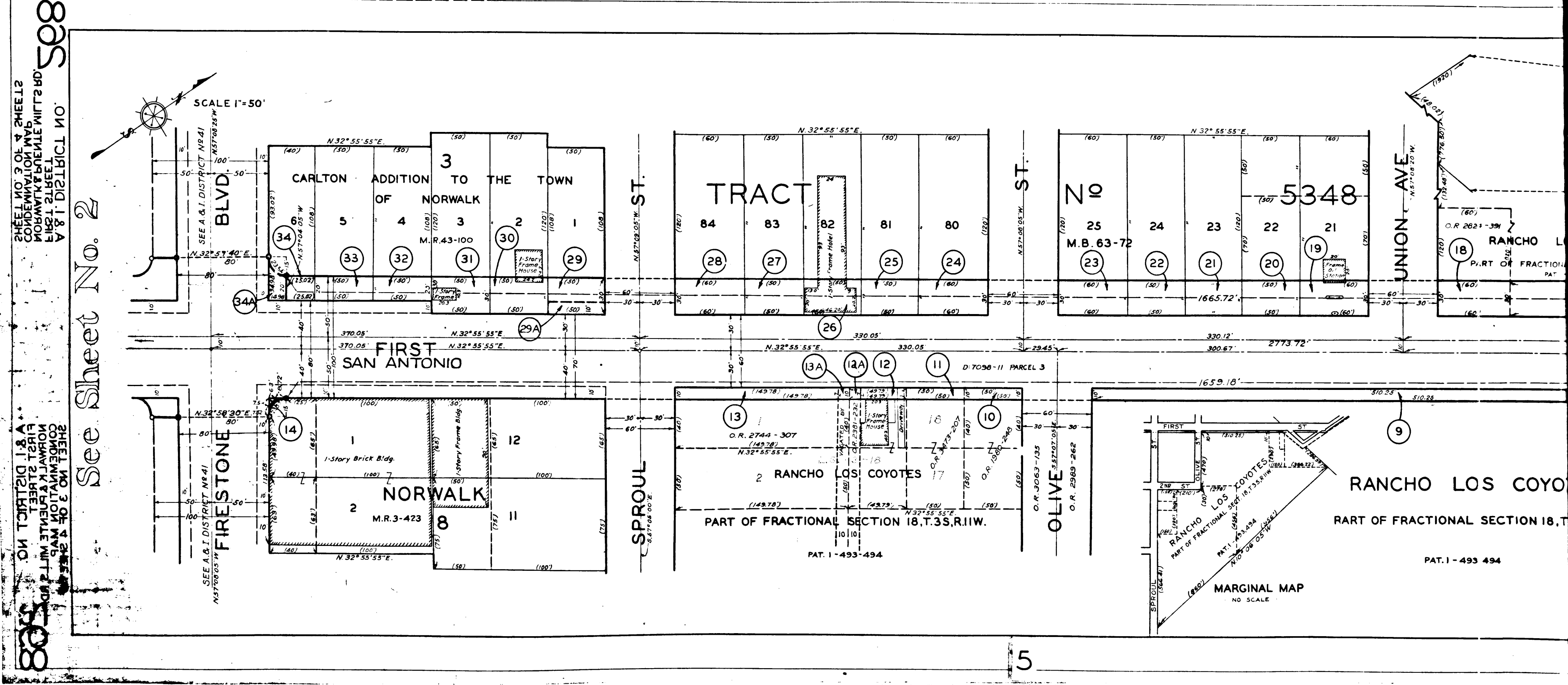


C.F. 1803 -

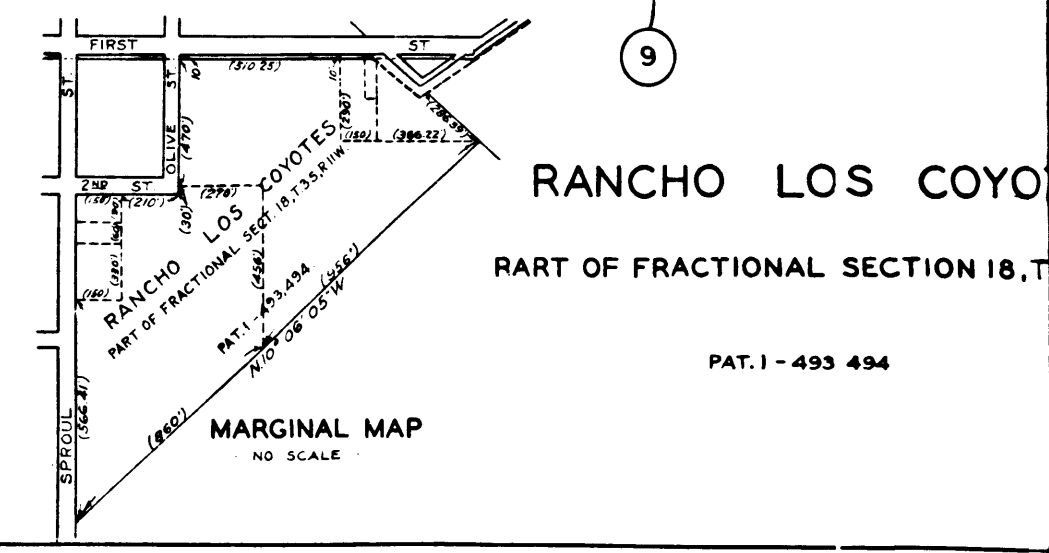


A & I. DISTRICT NO. 268
 SHEET NO. 2 OF 4 SHEETS
 DRAWN BY C.H. GREEN MAY 1939
 TRACED BY C.H. GREEN MAY 1939
 CHECKED BY C.R. LEWIS JUNE 1939
 C.S. INDEX MAP NO. 33

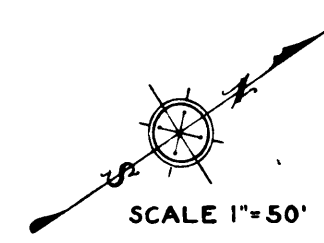
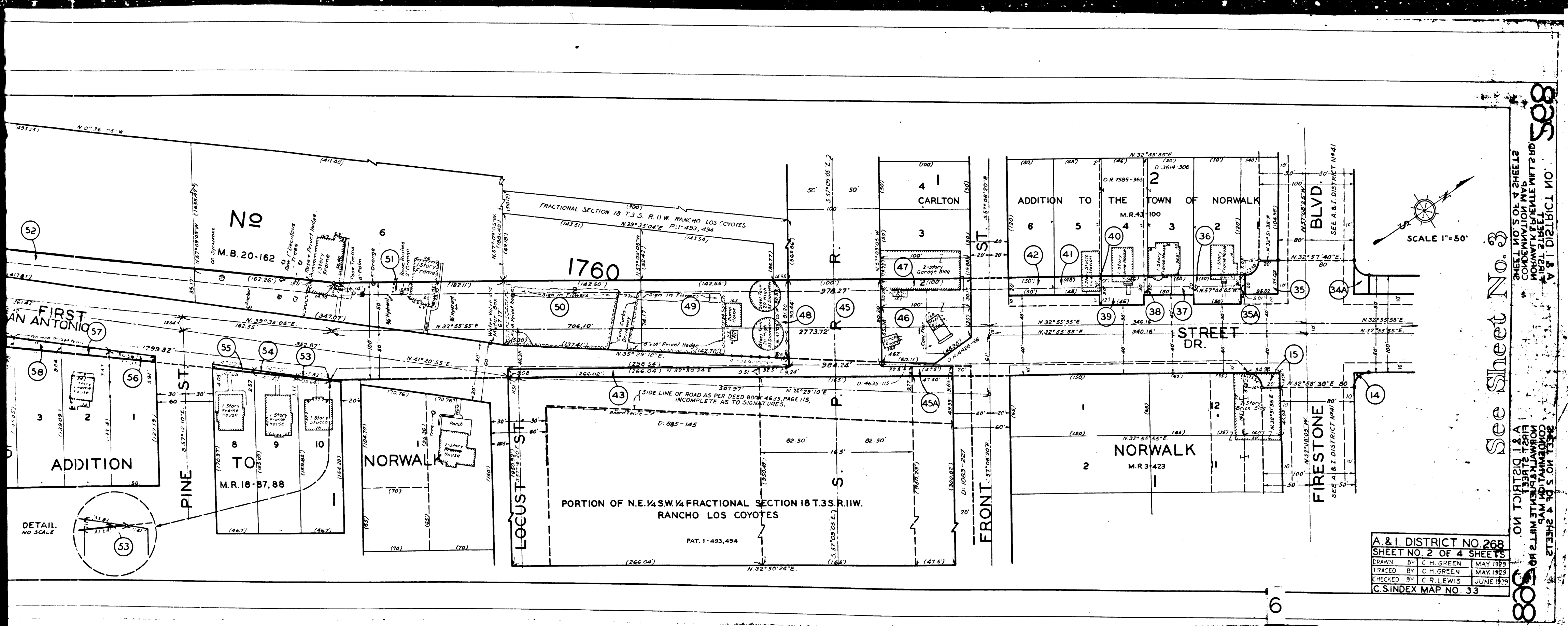
See Sheet No. 3
 SHEET NO. 3 OF 4 SHEETS
 CONDENSATION MAP
 NORWALK & BRENLE MILLS RD
 FIRST STREET
 A & I. DISTRICT NO. 508



See Sheet No. 2
 SHEET NO. 2 OF 4 SHEETS
 CONDENSATION MAP
 NORWALK & BRENLE MILLS RD
 FIRST STREET
 A & I. DISTRICT NO. 508



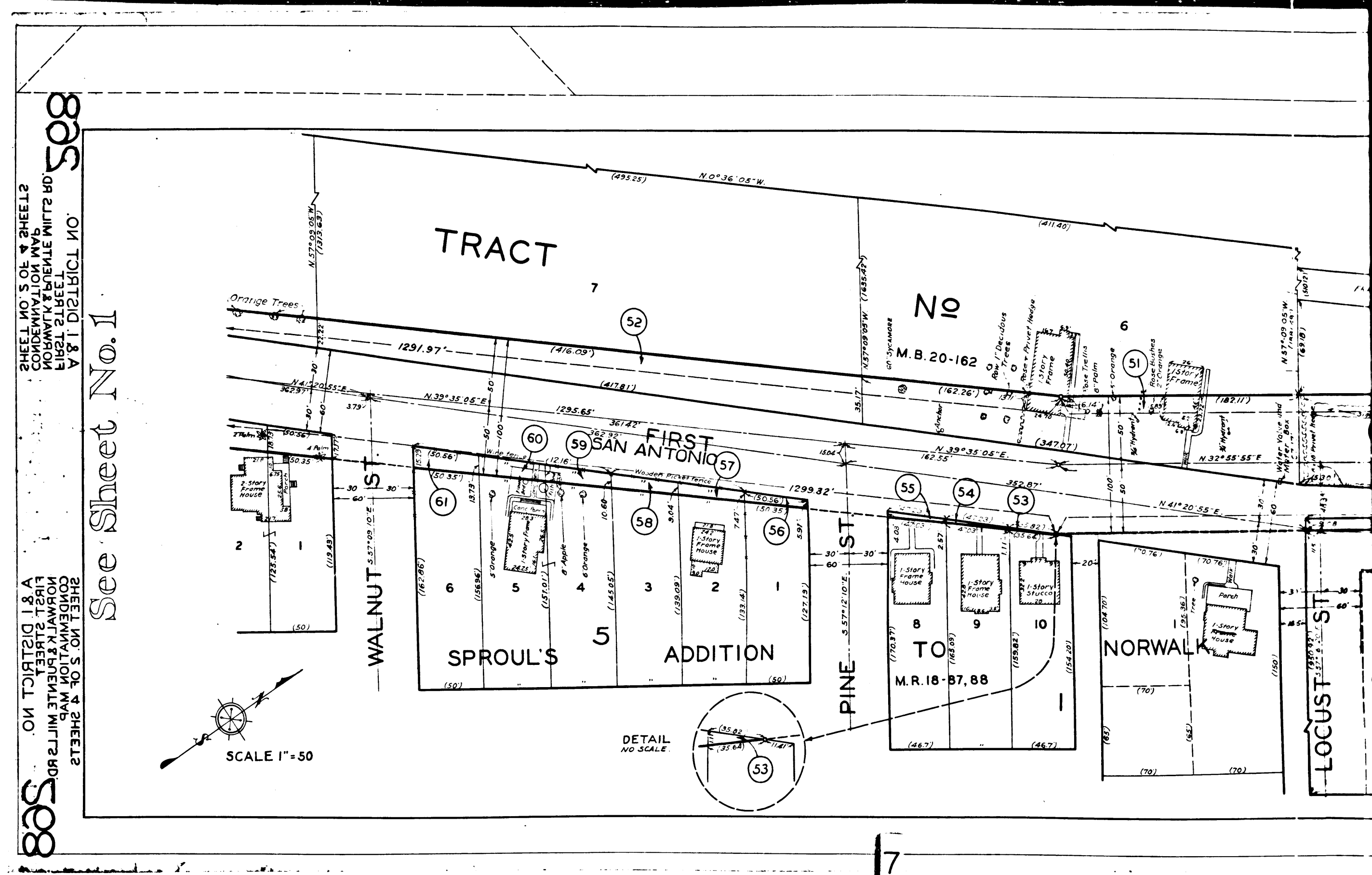
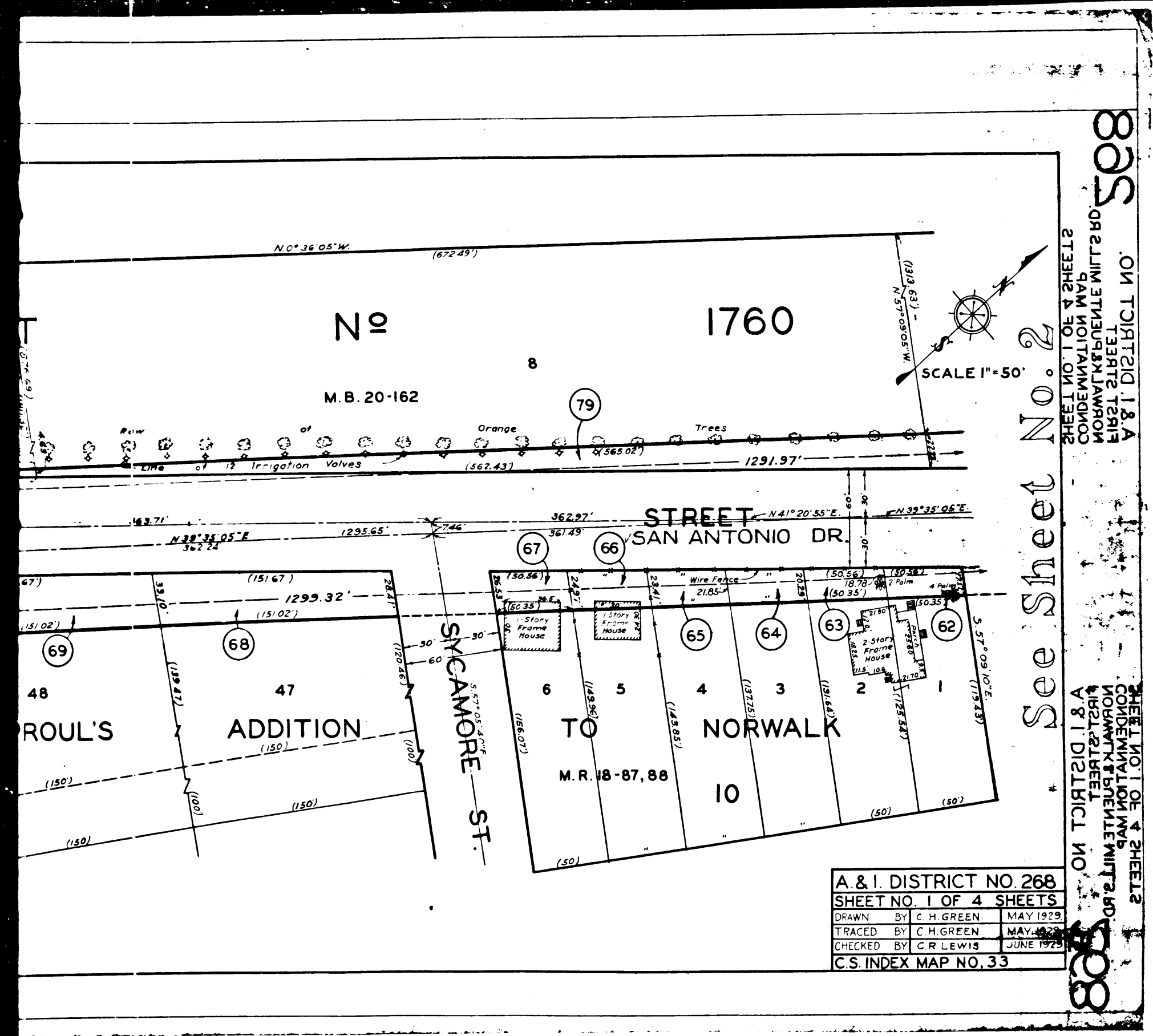
C.F. 1803 -



ON TOWNSHIP 18 N
 RANGE 11 W
 COUNTY OF SAN JUAN
 STATE OF NEW MEXICO
 SHEET NO. 2 OF 4 SHEETS
 A & I DISTRICT NO. 268
 SHEET NO. 2 OF 4 SHEETS
 DRAWN BY C. H. GREEN MAY 1925
 TRACED BY C. H. GREEN MAY 1925
 CHECKED BY C. R. LEWIS JUNE 1925
 C.S. INDEX MAP NO. 33

C.F. 1803 -

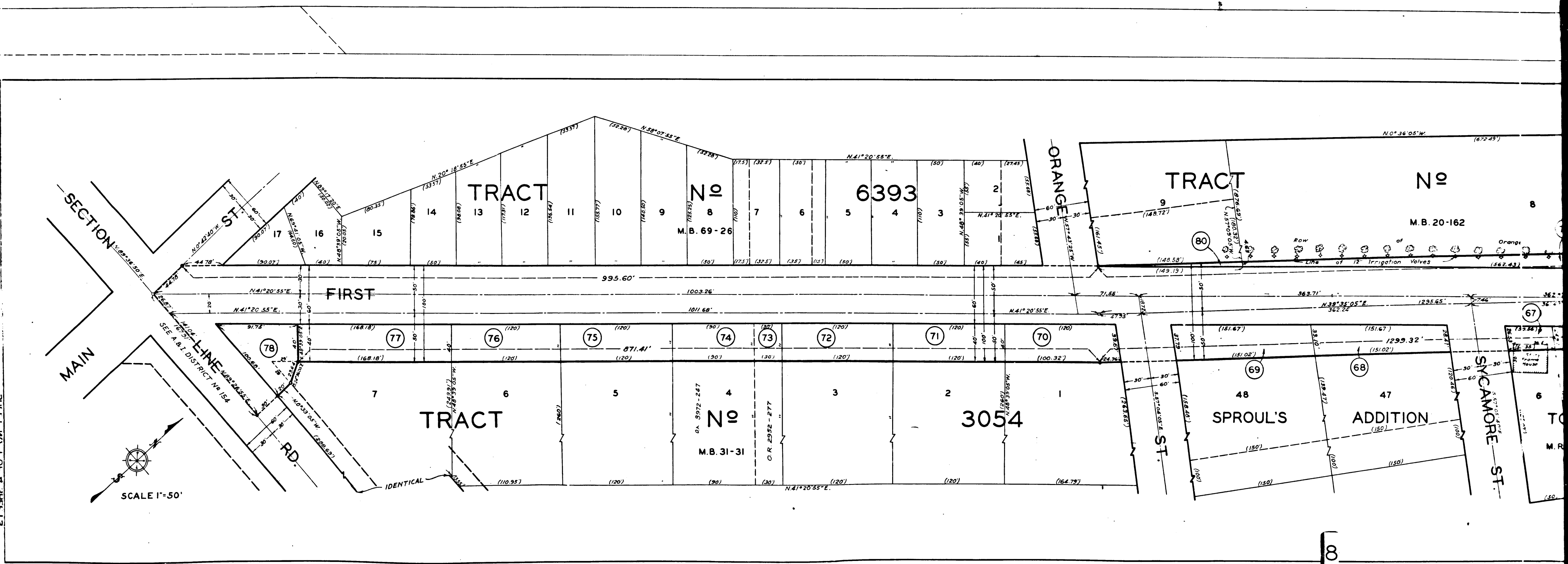
SHEET NO. 3 OF 4 SHEETS
 DRAWN BY C. H. GREEN MAY 1925
 TRACED BY C. H. GREEN MAY 1925
 CHECKED BY C. R. LEWIS JUNE 1925
 C.S. INDEX MAP NO. 33



7
C.F. 1803 -

SHEET NO. 1 OF 4 SHEETS
COMMISSION MAP
MORNING STAR TRACT
FIRST STREET
A & I DISTRICT NO. 508

SHEET NO. 1 OF 4 SHEETS
COMMISSION MAP
MORNING STAR TRACT
FIRST STREET
A & I DISTRICT NO. 508



SCALE 1"=50'

8
C.F. 1803 -