

**ACQUISITION AND IMPROVEMENT DISTRICT NO. 287
OF THE COUNTY OF LOS ANGELES**

FOR
**THE OPENING, WIDENING, AND EXTENDING OF
EASTERN AVENUE**
AND THE WIDENING OF
FLORENCE AVENUE, BAKER AVENUE,
AND COMPTON AND JABONERIA ROAD

MAP SHOWING PROPERTY TO BE ACQUIRED, IN ACCORDANCE WITH THE PROVISIONS OF THE ACQUISITION AND IMPROVEMENT ACT OF 1925. APPROVED MAY 23, 1925. COMMONLY KNOWN AS THE "MATTOON ACT."
SCALE: 1" = 50'
SEPTEMBER, 1929.

J. E. ROCKHOLD — COUNTY SURVEYOR.

SUBMITTED:

APPROVED:

Alfred Jones
ALFRED JONES,
CHIEF DEPUTY

J. E. Rockhold
J. E. ROCKHOLD,
COUNTY SURVEYOR

APPROVED AS TO FORM:
EVERETT W. MATTOON, COUNTY COUNSEL.

BY: *W. J. Mattoon*
DEPUTY COUNTY COUNSEL.

LEGEND

PORTION COLORED RED SHOWS LOCATION, GENERAL ROUTE AND TERMINI OF LAND IN WHICH AN EASEMENT FOR PUBLIC HIGHWAY PURPOSES IS SOUGHT TO BE ACQUIRED.
PORTION COLORED YELLOW SHOWS LOCATIONS OF NECESSARY EASEMENTS SOUGHT TO BE ACQUIRED OTHER THAN FOR PUBLIC HIGHWAY PURPOSES.
NUMBERS IN CIRCLES INDICATE PARCELS SOUGHT TO BE CONDEMNED.
FIGURES SHOWN IN PARENTHESES () ARE EITHER RECORD DISTANCES OR ARE CALCULATED FROM RECORD DISTANCES.
FIGURES SHOWN THUS:

0,000 INDICATE AREA TO BE ACQUIRED, IN SQUARE FEET.
00,000 INDICATE AREA OF HOLDING, INCLUDING AREA TO BE ACQUIRED, IN SQUARE FEET.

NUMBERS IN CIRCLES SHOWN THUS ○ REFER TO PARCELS INCLUDED IN S.C.C. NO. 251863

Negative of this map filed in Blue Print Dept. of Navigation No. 216 (3 Shts. + Index - Rectangular)

| | |
|---------------------------|------------|
| A & I DISTRICT NO. 287 | |
| SHEET 3 OF 3 SHEETS | |
| DRAWN BY | R. S. LENT |
| TRACED BY | R. S. LENT |
| CHECKED BY | W. A. LENO |
| C. S. INDEX MAP NOS 32-36 | |

Sht 32
Sht 36
Superior Court Case No. 303351
Suit for Condemnation
Filed May 29th 1930
County of Los Angeles, Pltff.
Vs
Associated Oil Co., et al., Def.
Case dismissed as to parcels 12, 13
and 22 to 36, incl. on Aug. 14, 1933.
Case dismissed as to all defendants
on June 7, 1938.

C.F. 1814 -

Sht. 36
Sht. 32

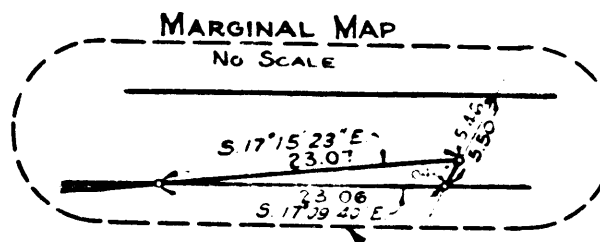
A. & I. DISTRICT NO. 287
EASTERN AVENUE
CONDEMNATION MAP
SHEET NO. 3 OF 3 SHEETS

A. & I. DISTRICT NO. 287
EASTERN AVENUE
CONDEMNATION MAP
SHEET NO. 3 OF 3 SHEETS

28

HEYMAN

SCALE 1" = 50'



SEE MARGINAL MAP

AND

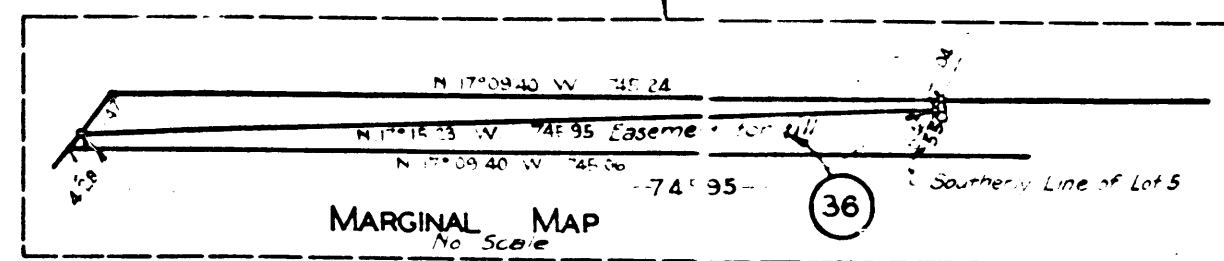
(PROPOSED)

EASTERN

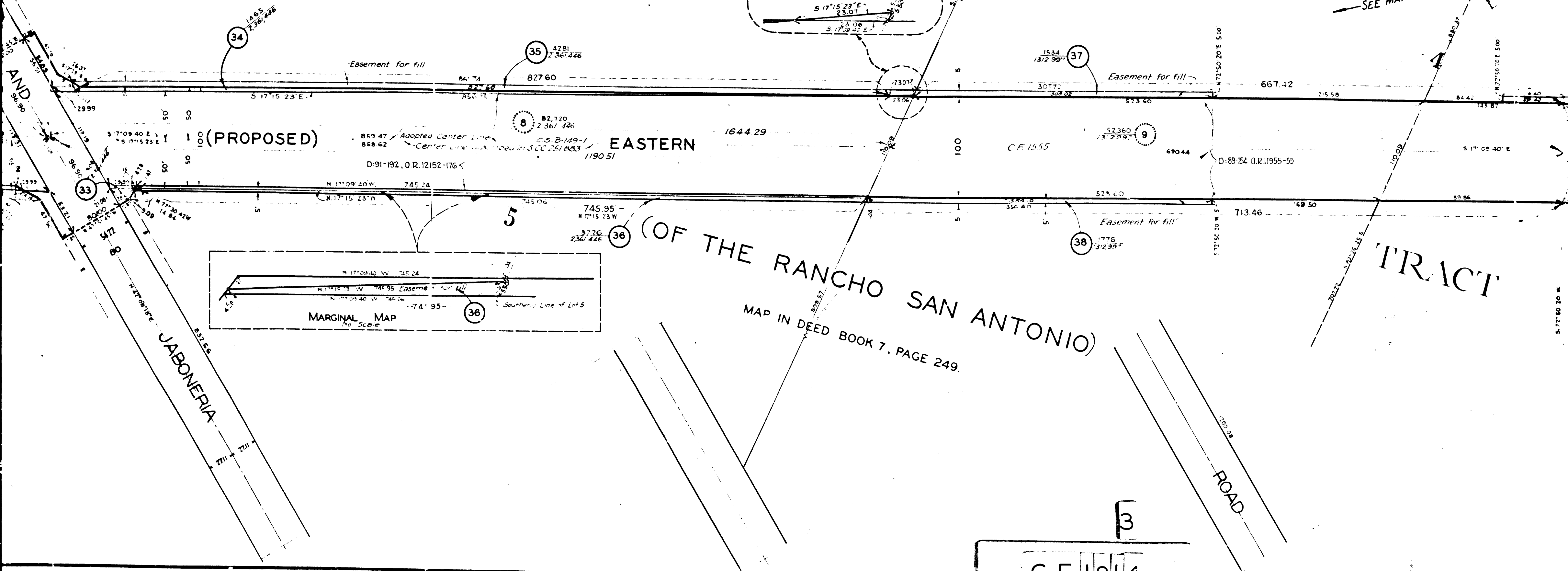
(OF THE RANCHO SAN ANTONIO)

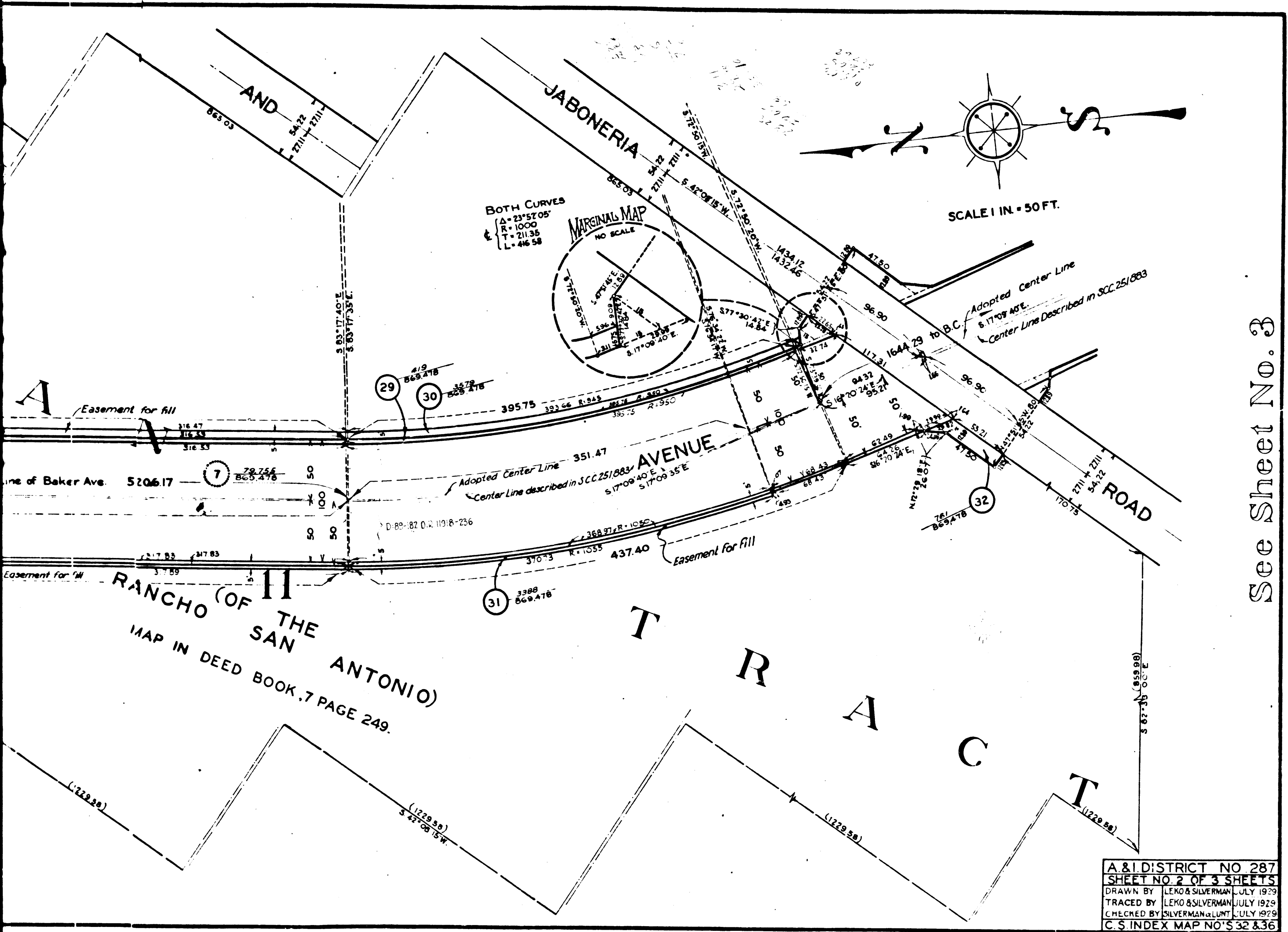
TRACT

MAP IN DEED BOOK 7, PAGE 249.



C.F. 1814 -





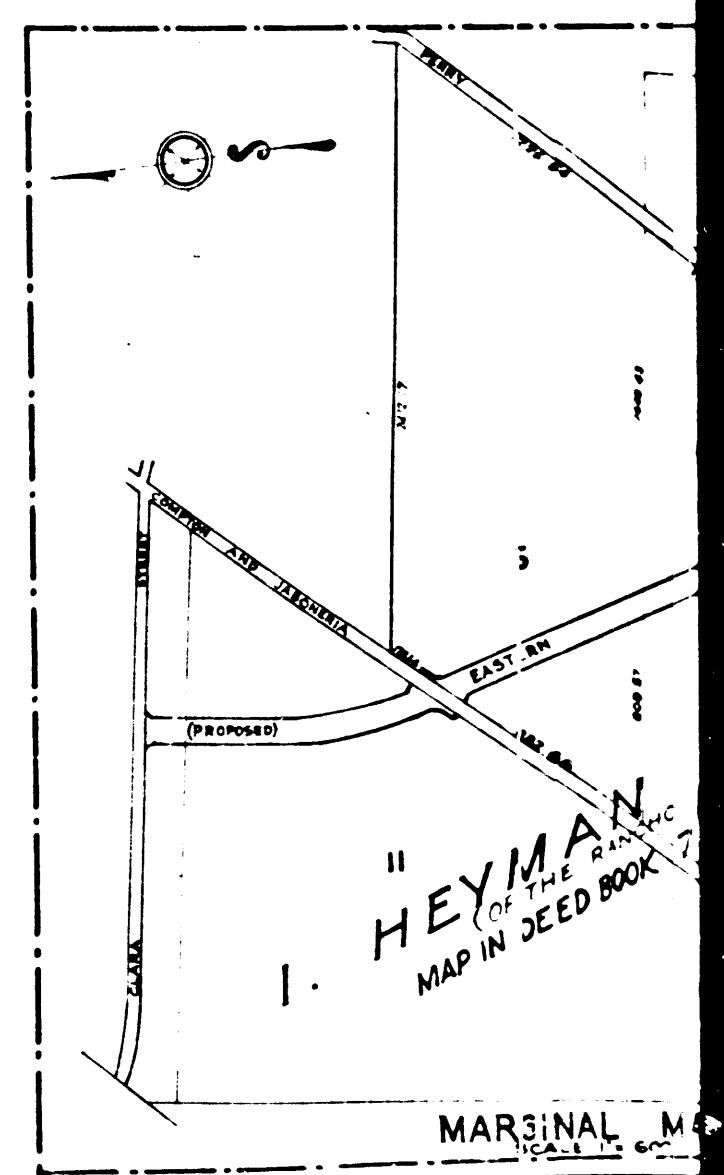
A & I DISTRICT NO 287
 SHEET NO 2 OF 3 SHEETS
 DRAWN BY LEKO & SILVERMAN JULY 1929
 TRACED BY LEKO & SILVERMAN JULY 1929
 CHECKED BY SILVERMAN & LUNT JULY 1929
 C. S. INDEX MAP NO'S 32 & 36

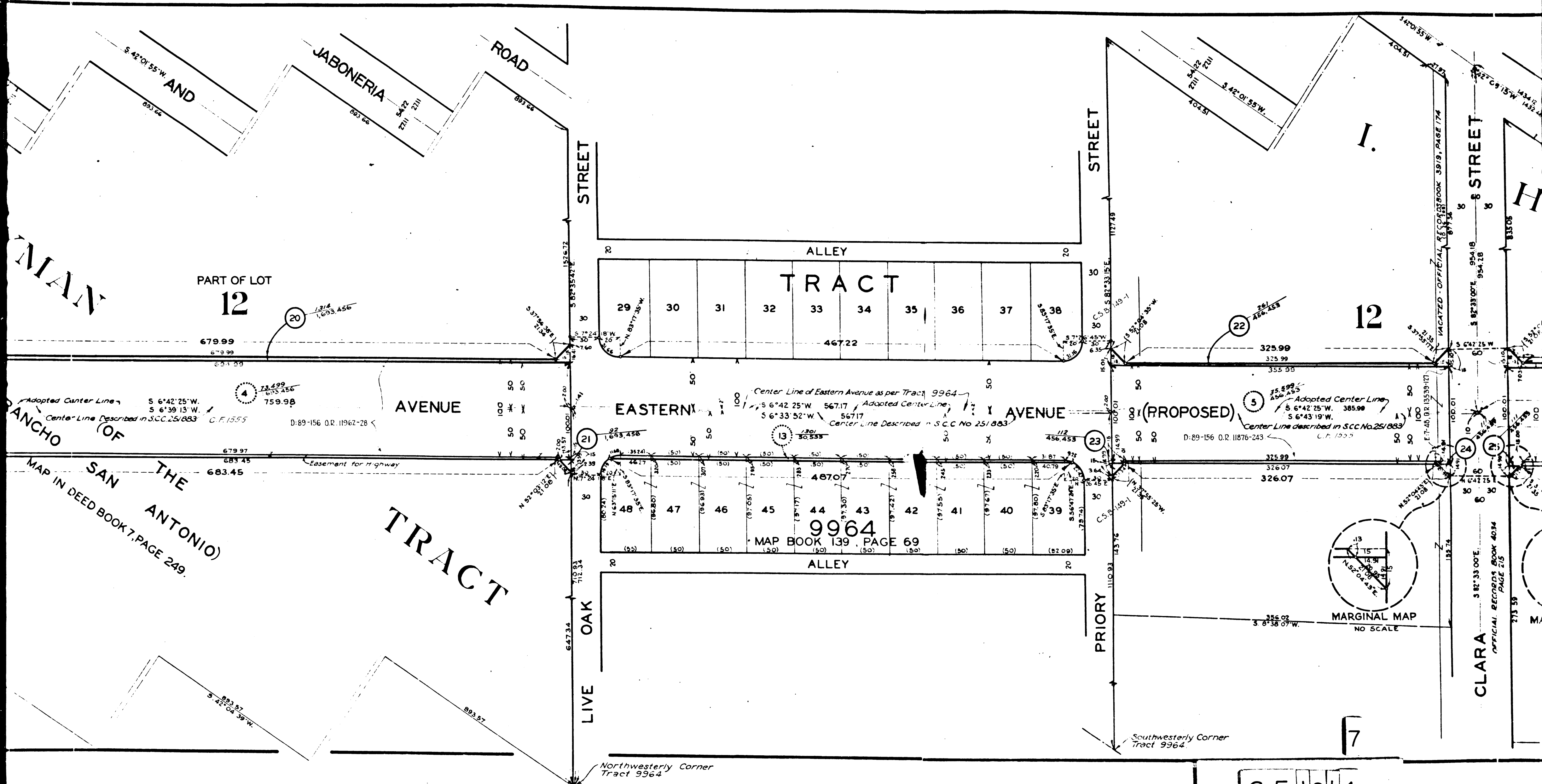
C.F. 1814 -

287
 A. & I. DISTRICT NO.
 EASTERN AVENUE
 CONDEMNATION MAP
 SHEET NO. 3 OF 3 SHEETS

A. & I. DISTRICT NO.
 EASTERN AVENUE
 CONDEMNATION MAP
 SHEET NO. 3 OF 3 SHEETS
287

See Sheet No. 2





PART OF LOT
12

12

TRACT

9964

MAP BOOK 139, PAGE 69

MARGINAL MAP
NO SCALE

C.F. 1814 -

MAN
RANCHO (OF THE ANTONIO)
MAP IN DEED BOOK 7, PAGE 249.

CLARA
OFFICIAL RECORDS BOOK 4034
PAGE 215

Northwesterly Corner
Tract 9964

Southwesterly Corner
Tract 9964

Adopted Center Line
S 6°42'25"W. 567.17
S 6°39'13"W. 567.17
Center Line Described in S.C.C. 25/883 C.F. 1555

Center Line of Eastern Avenue as per Tract 9964
S 6°42'25"W. 567.17 Adopted Center Line

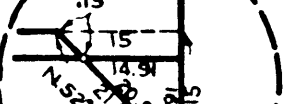
S 6°33'52"W. 567.17
Center Line Described in S.C.C. No 25/883

Adopted Center Line
S 6°42'25"W. 385.98
S 6°43'19"W. 385.98
Center Line described in S.C.C. No 25/883 C.F. 1555

D:89-156 O.R. 11962-28

D:89-156 O.R. 11876-243

Easement for highway



SAN ANTONIO

COMPTON

AND

JABONERIA

ROAD

I. HEYMAN

PART OF LOT 12

STREET

LIVE OAK

CULTIVATED

SPINACH

MUSTARD

14

16

18

20

Easement for fill

679.99

759.98

(PROPOSED)

EASTERN

3

446.20

50

100

50

100

50

50

AVENUE

50

50

21

E 21-148, O.R. 15482-392

Adopted Center Line
Center Line Described in S.C.C. 25/883

D:89-156 O.R. 11962-28

RHUBARB

RANCHO

CAULIFLOWER

(FINALLY CONFIRMED TO ANTONIO MARIA LUGO)

Easement for fill

15

TURNIPS

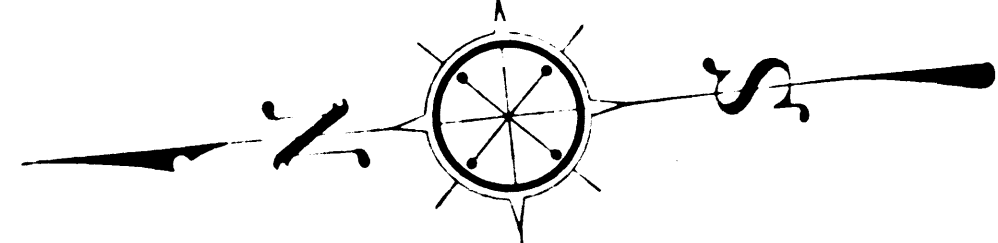
17

19

Easement for Highway

MAP IN DEED BOOK 7, PAGE 249.

PATENTS BOOK I, PAGE 389.



SCALE 1 IN. = 50 FT.

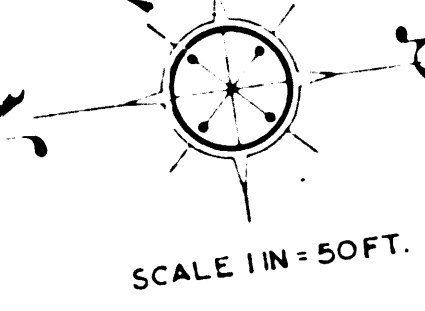
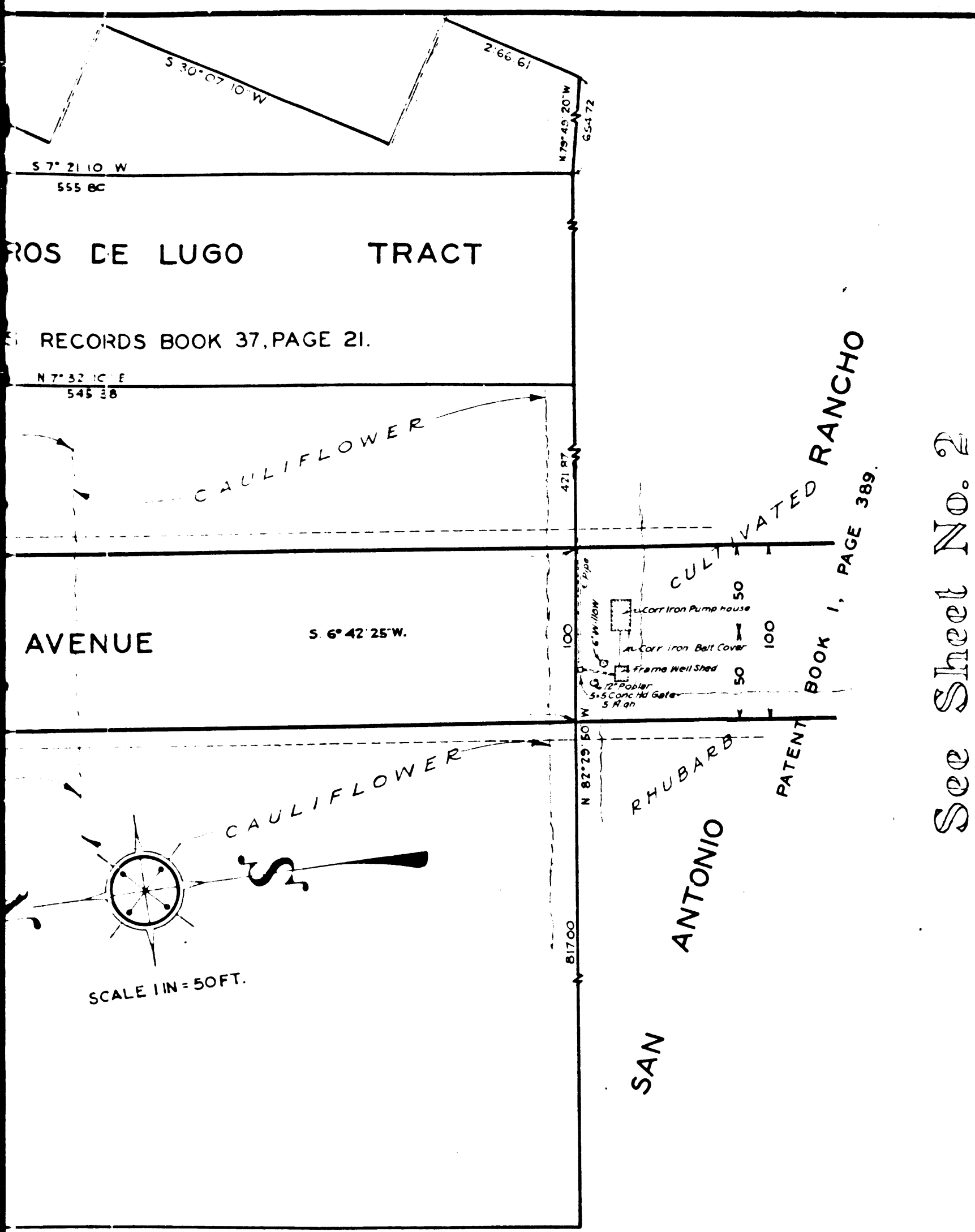
DEED BOOK 3236, PAGE 212.

(D. 10-98)

AVENUE

FLORENCE

C.F. 1814 -

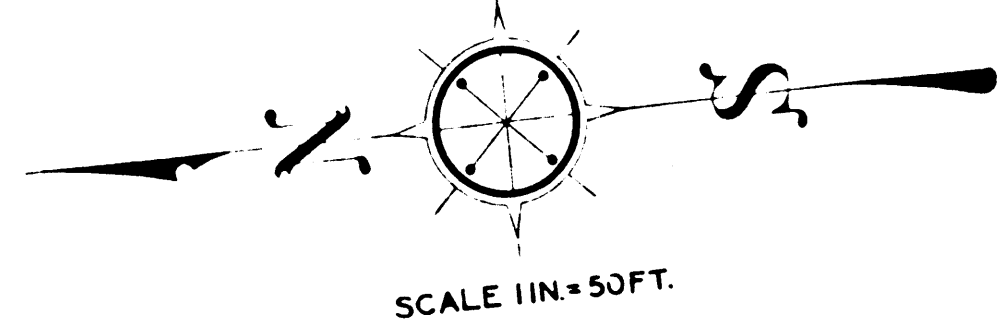
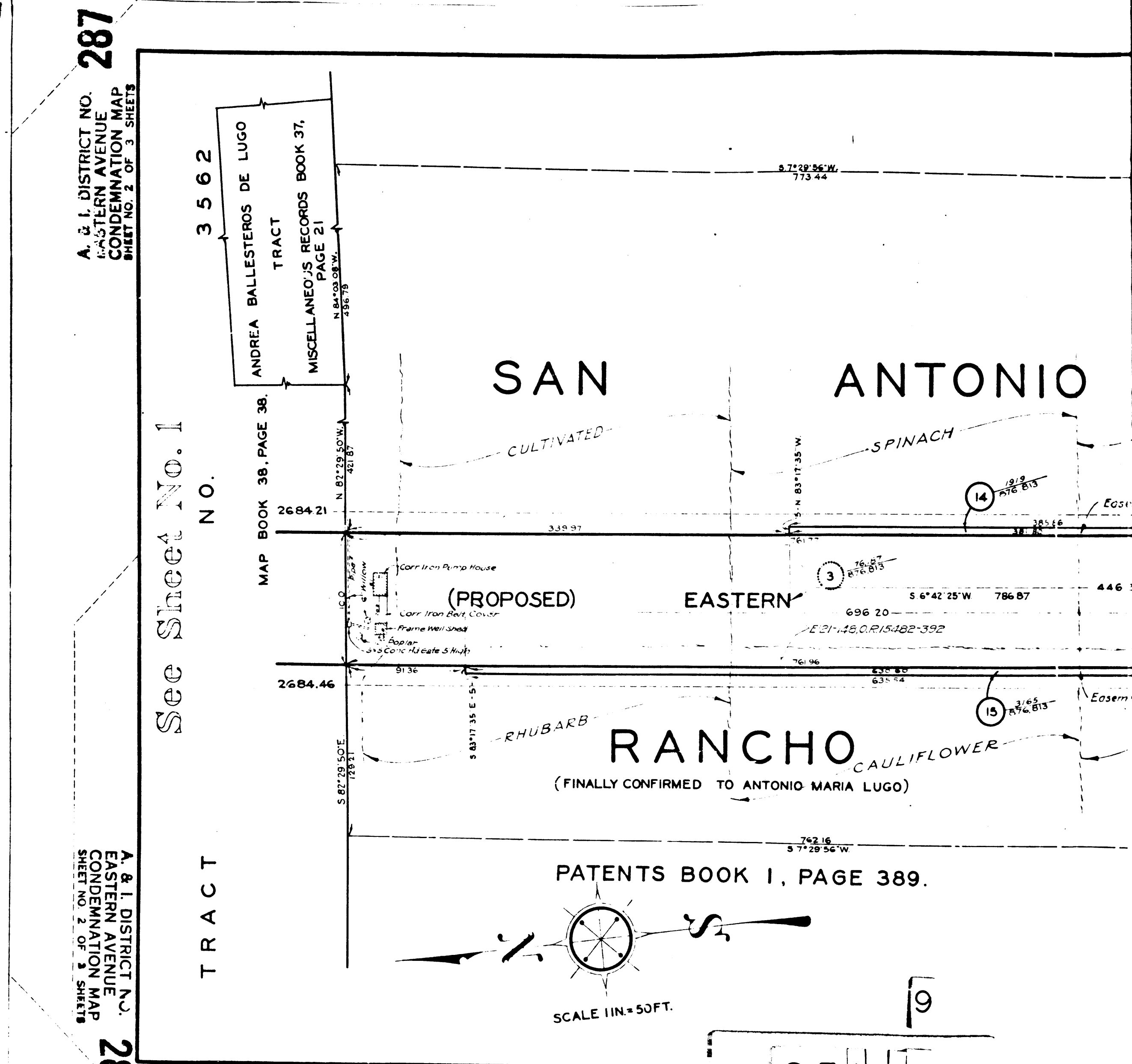


| | |
|----------------------------|------------------------------|
| A. & I. DISTRICT NO. 287 | |
| SHEET 1 OF 3 SHEETS | |
| DRAWN BY | R. G. LUNT, JUNIOR JULY 1929 |
| TRACED BY | S. SILVERMAN JULY 1929 |
| CHECKED BY | H. MAYES - KALEO JULY 1929 |
| C. S. INDEX MAP NO'S 32&36 | |

A. & I. DISTRICT NO. 287
EASTERN AVENUE CONDEMNATION MAP
SHEET NO. 1 OF 3 SHEETS

A. & I. DISTRICT NO. 287
EASTERN AVENUE CONDEMNATION MAP
SHEET NO. 1 OF 3 SHEETS

See Sheet No. 2

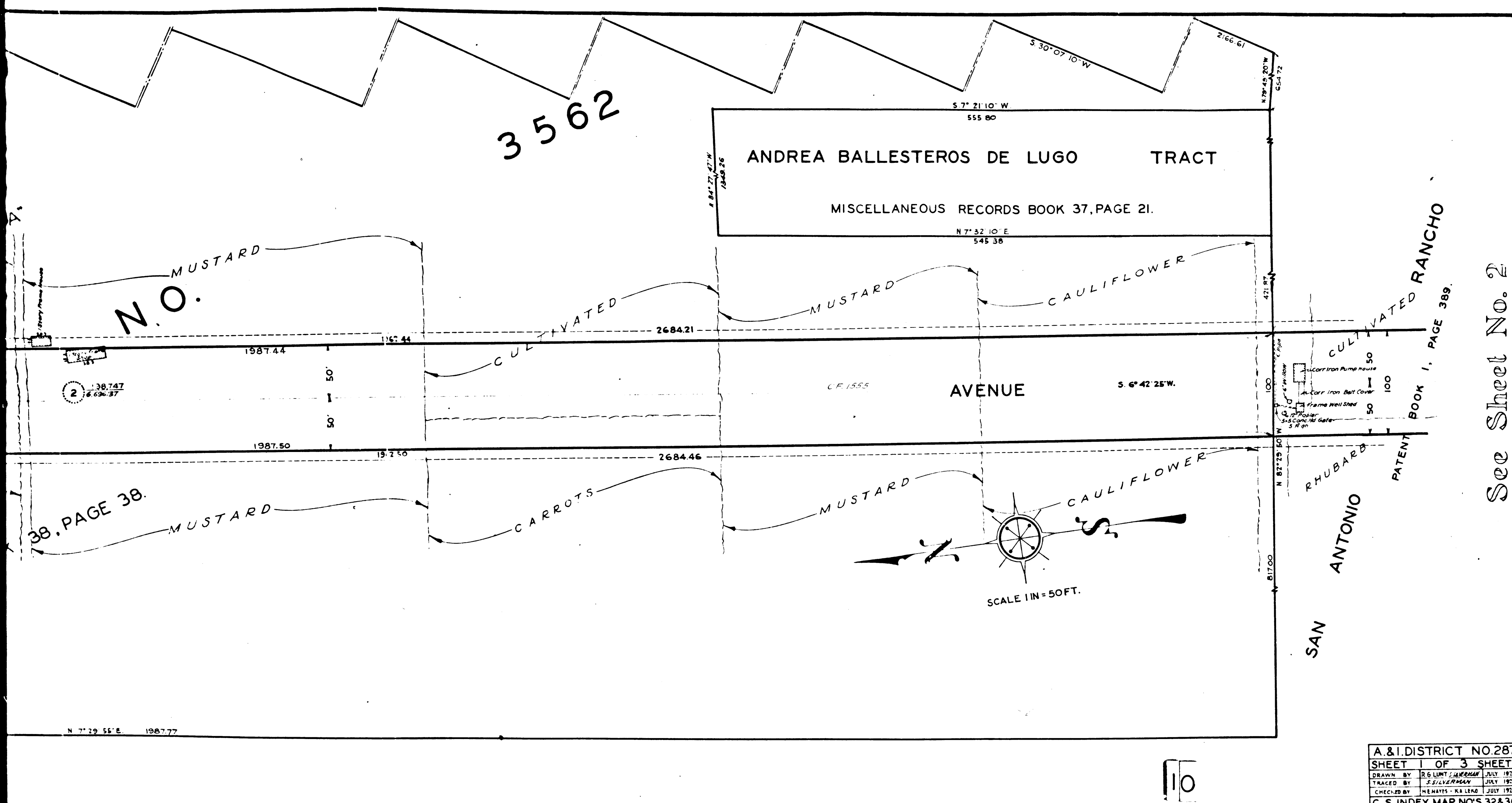


A. & I. DISTRICT NO. 287
EASTERN AVENUE CONDEMNATION MAP
SHEET NO. 2 OF 3 SHEETS

A. & I. DISTRICT NO. 287
EASTERN AVENUE CONDEMNATION MAP
SHEET NO. 2 OF 3 SHEETS

See Sheet No. 1

C.F. 1814 - 9

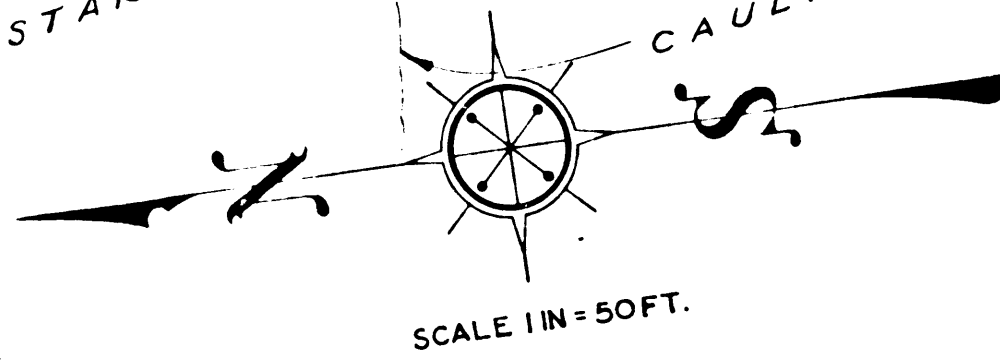


3562

ANDREA BALLESTEROS DE LUGO TRACT
 MISCELLANEOUS RECORDS BOOK 37, PAGE 21.

AVENUE

CULTIVATED RANCHO
 PATENT BOOK 1, PAGE 389



| | | | |
|------------------------------|---------------------------|-------------|--|
| A. & I. DISTRICT NO. 287 | | | |
| SHEET | | OF 3 SHEETS | |
| DRAWN BY | R. G. LINT / S. SILVERMAN | JULY 1929 | |
| TRACED BY | S. SILVERMAN | JULY 1929 | |
| CHECKED BY | H. HAYES - K. A. LENO | JULY 1929 | |
| C. S. INDEX MAP NO'S 32 & 36 | | | |

C.F. 1814 -

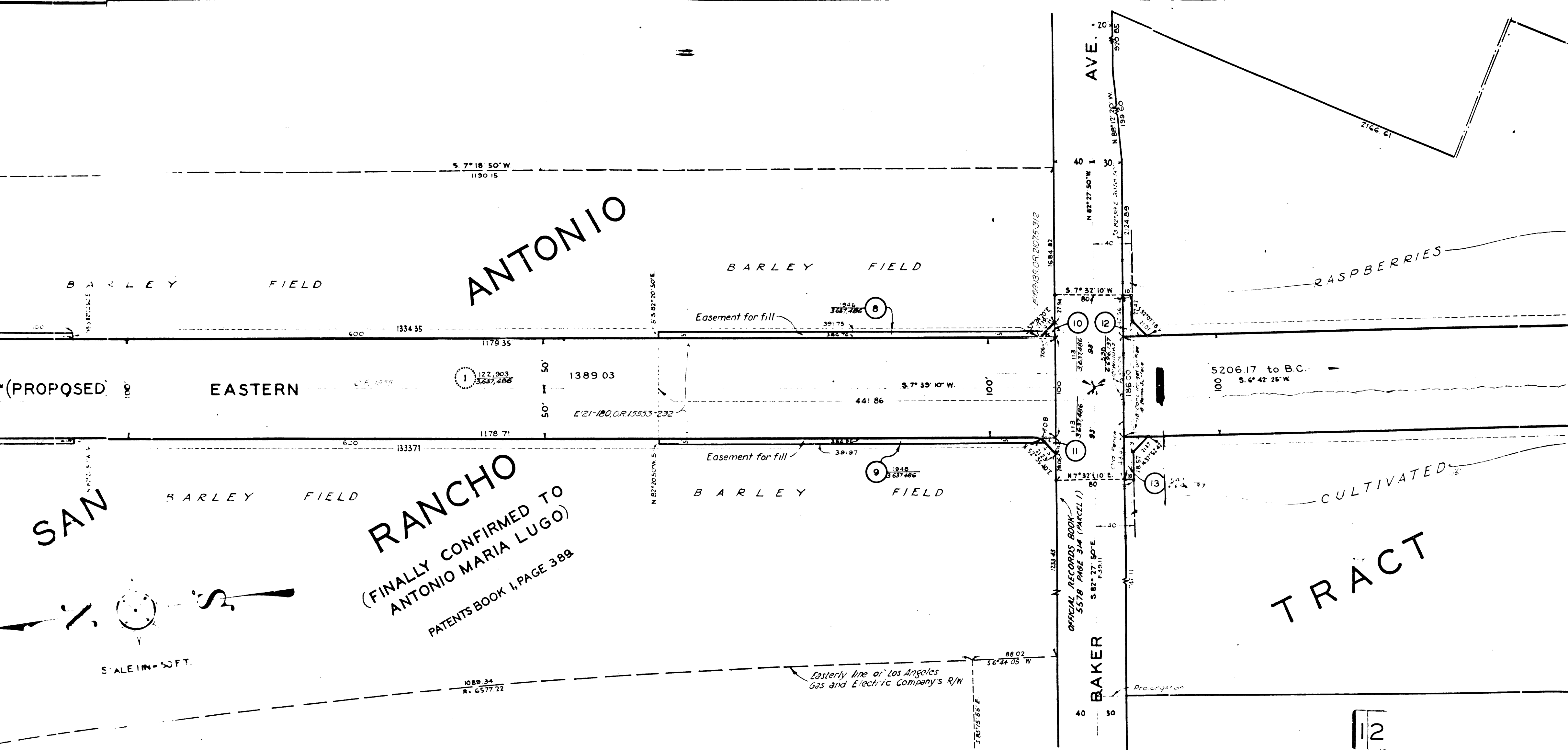
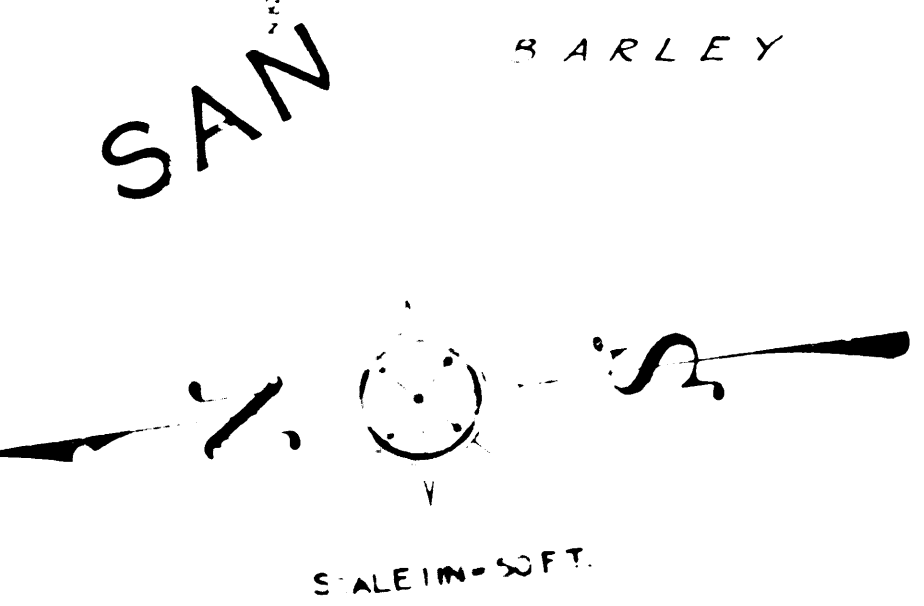
A. & I. DISTRICT NO. 287
 EASTERN AVENUE
 CONDEMNATION MAP
 SHEET NO. 1 OF 3 SHEETS

See Sheet No. 2

A. & I. DISTRICT NO. 287
 EASTERN AVENUE
 CONDEMNATION MAP
 SHEET NO. 1 OF 3 SHEETS

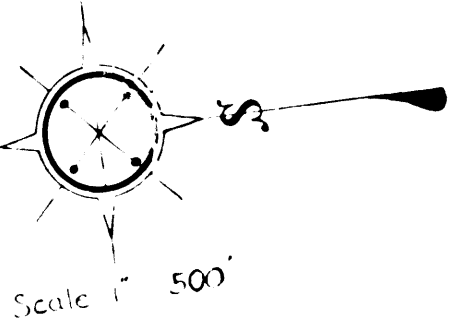
ANTONIO

RANCHO
(FINALLY CONFIRMED TO
ANTONIO MARIA LUGO)
PATENTS BOOK 4, PAGE 389



C.F. 1814 -

12



INDEX TO CONDEMNATION MAPS
EASTERN AVE
A & I DISTRICT NO. 185

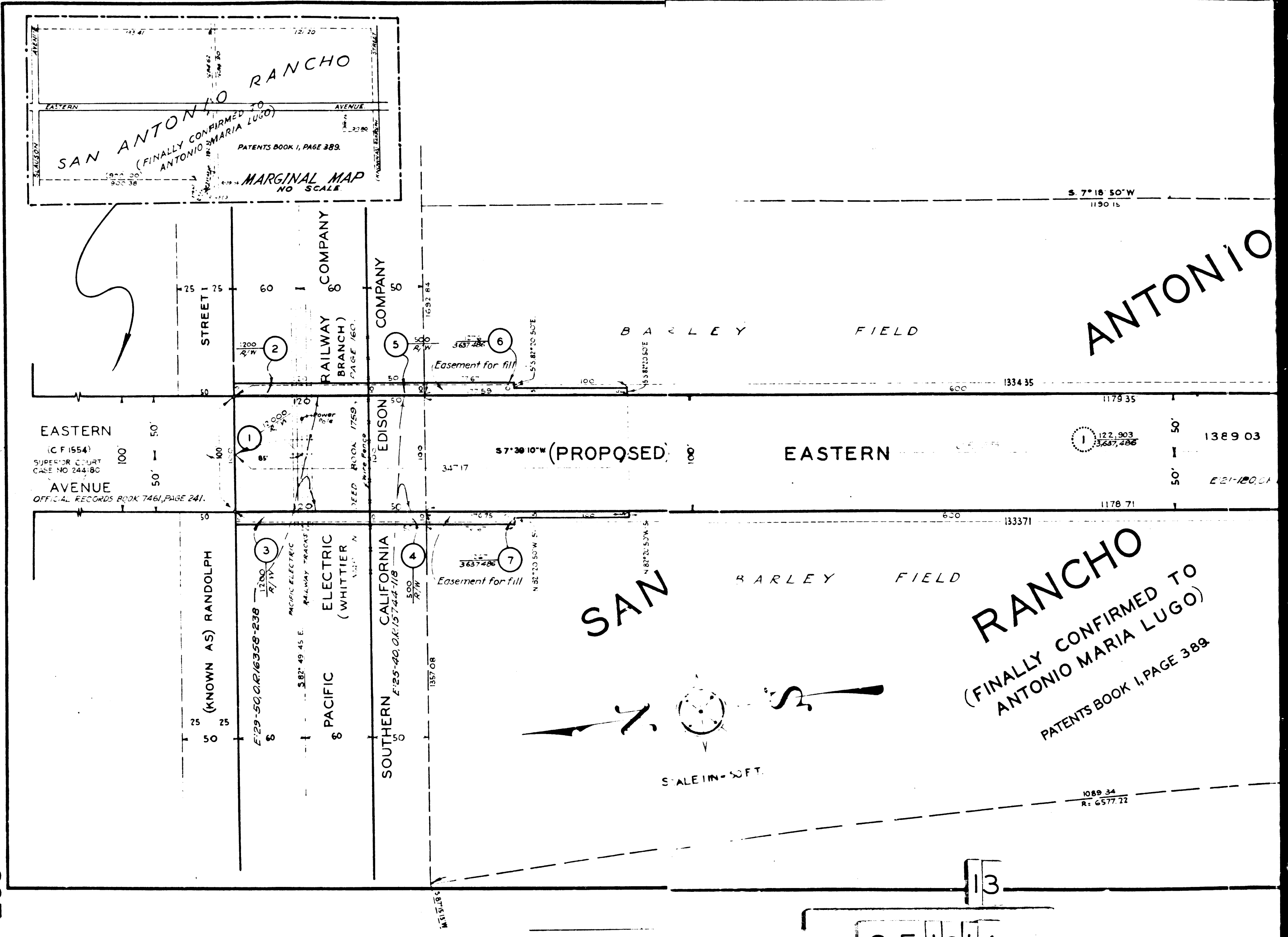
INDEX TO CONDEMNATION MAPS
EASTERN AVE
A & I DISTRICT NO. 185

NOTE: Numbers in circles indicate parcel numbers

| | |
|-----------------------------|----------------------------|
| A & I. DISTRICT No 287. | |
| INDEX TO CONDEMNATION MAPS. | |
| DRAWN BY | K. A. L. JULY 1929 |
| TRACED BY | K. A. L. - S. S. JULY 1929 |
| CHECKED BY | R. G. I. JULY 1929 |
| C. S. INDEX MAP NO'S 32-36 | |

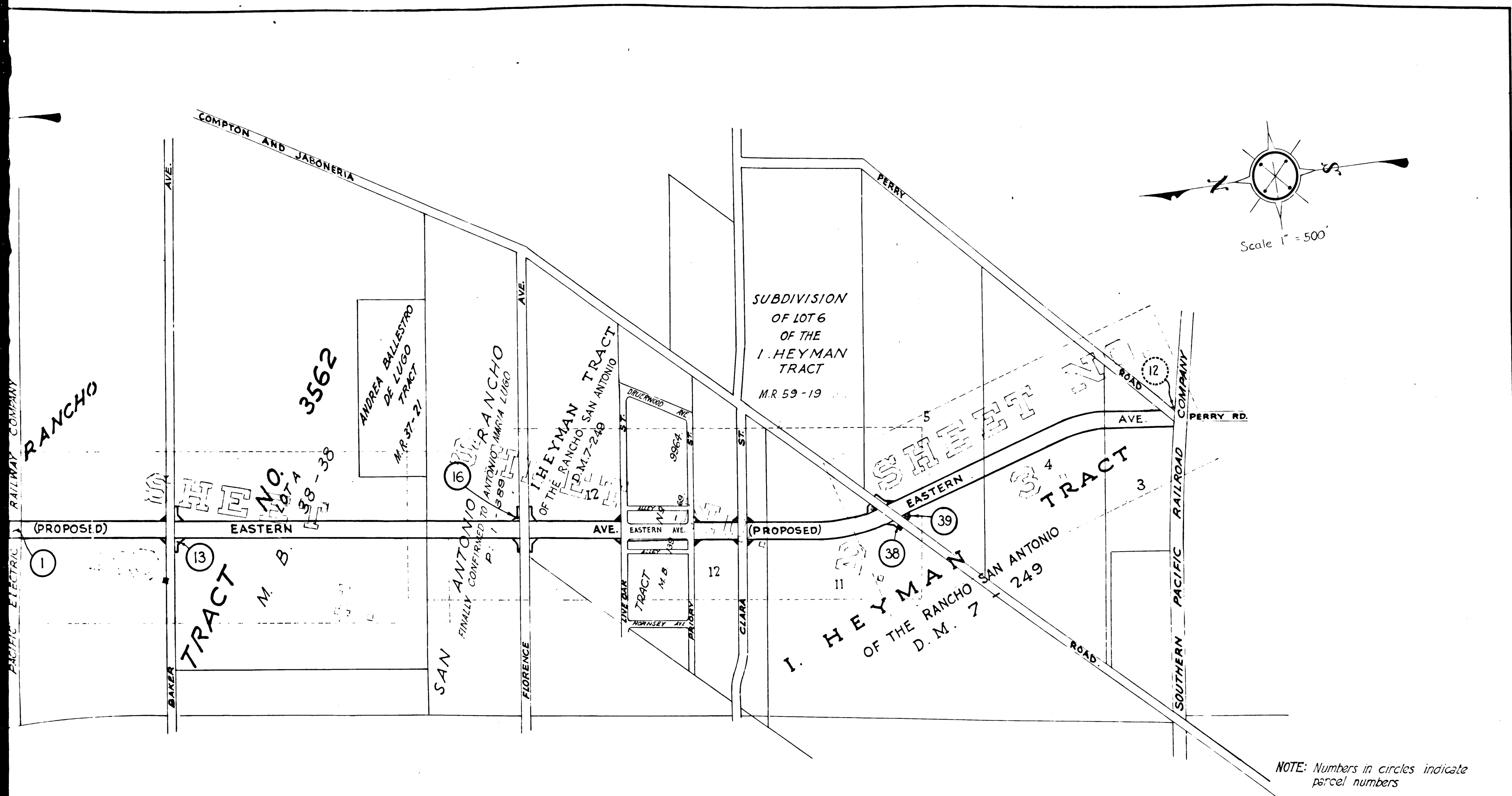
A. & I. DISTRICT NO. 287
EASTERN AVENUE
CONDEMNATION MAP
SHEET NO. 1 OF 3 SHEETS

A. & I. DISTRICT NO. 287
EASTERN AVENUE
CONDEMNATION MAP
SHEET NO. 1 OF 3 SHEETS



C.F. 1814 -

13



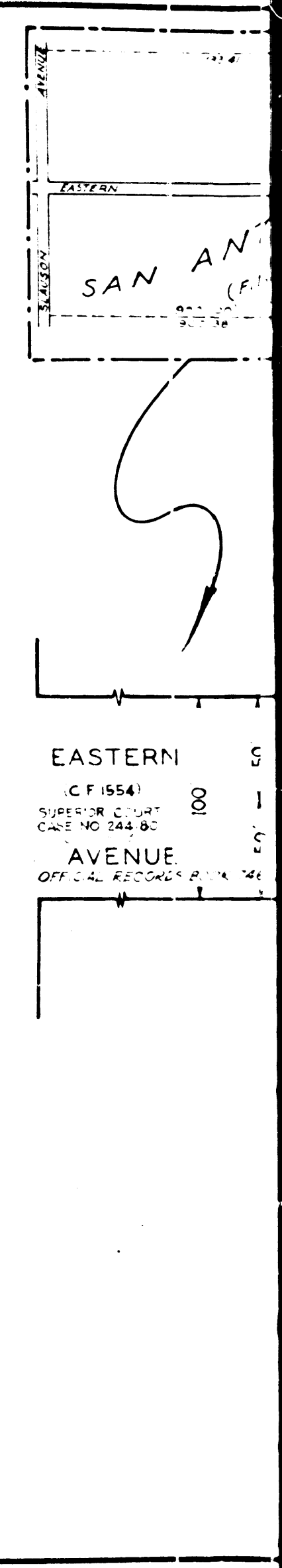
NOTE: Numbers in circles indicate parcel numbers

C.F. 1814 -

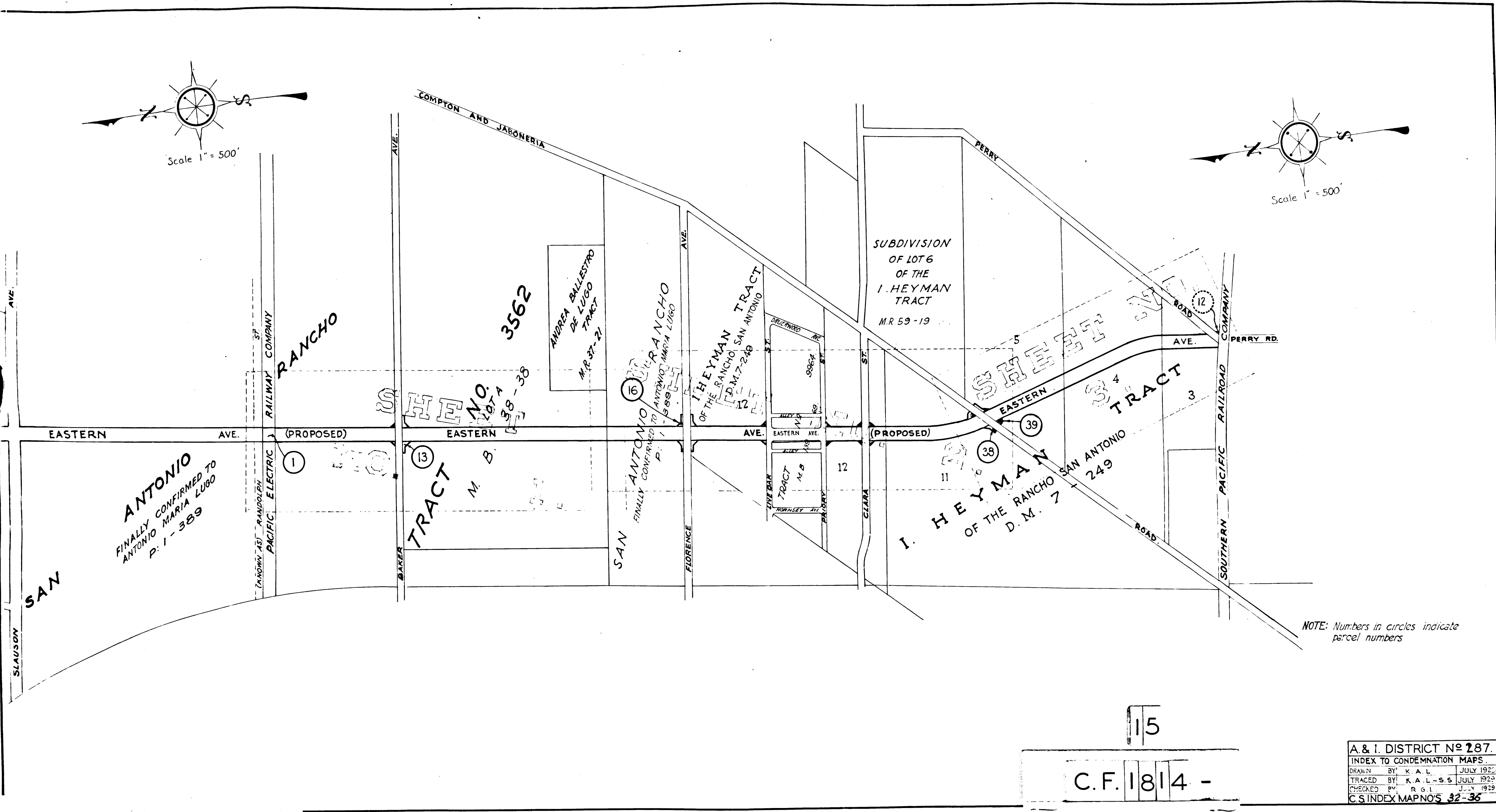
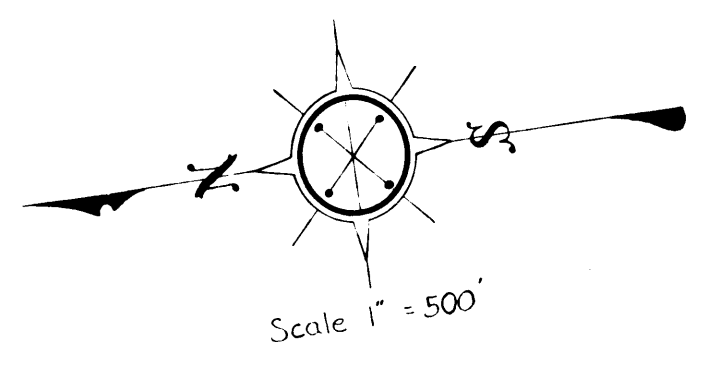
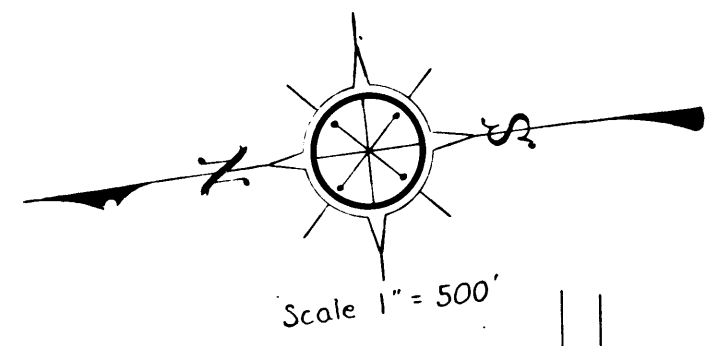
| | | |
|-----------------------------|-----------|-----------|
| A. & I. DISTRICT NO. 287. | | |
| INDEX TO CONDEMNATION MAPS. | | |
| DRAWN BY | K.A.L. | JULY 1929 |
| TRACED BY | K.A.L.-SS | JULY 1929 |
| CHECKED BY | R.G.I. | JULY 1929 |
| C.S. INDEX MAP NO'S 32-36 | | |

INDEX TO CONDEMNATION MAPS. EASTERN AVE. A. & I. DISTRICT NO. 287. 185

A. & I. DISTRICT NO. 287. EASTERN AVENUE MAP CONDEMNATION MAP SHEET NO. 1 OF 3 SHEETS. 187



INDEX TO CONDEMNATION MAPS
01 02 03 04 05 06 07 08 09 10 11 12 13 14 15 16 17 18 19 20 21 22 23 24 25 26 27 28 29 30 31 32 33 34 35 36 37 38 39 40 41 42 43 44 45 46 47 48 49 50 51 52 53 54 55 56 57 58 59 60 61 62 63 64 65 66 67 68 69 70 71 72 73 74 75 76 77 78 79 80 81 82 83 84 85 86 87 88 89 90



NOTE: Numbers in circles indicate parcel numbers

15
C.F. 1814 -

| | |
|-----------------------------|----------------------------|
| A & I. DISTRICT No 287. | |
| INDEX TO CONDEMNATION MAPS. | |
| DRAWN BY | K. A. L. JULY 1922 |
| TRACED BY | K. A. L. - S. S. JULY 1922 |
| CHECKED BY | R. G. I. JULY 1922 |
| C.S. INDEX MAP NOS 32-36 | |

185
ON TRACTS 1 & A
EASTERN AVE
INDEX TO CONDEMNATION MAPS

INDEX TO CONDEMNATION MAPS
EASTERN AVE
A & I DISTRICT NO 287